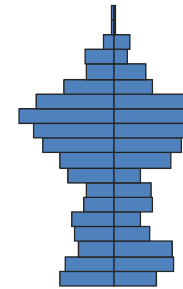
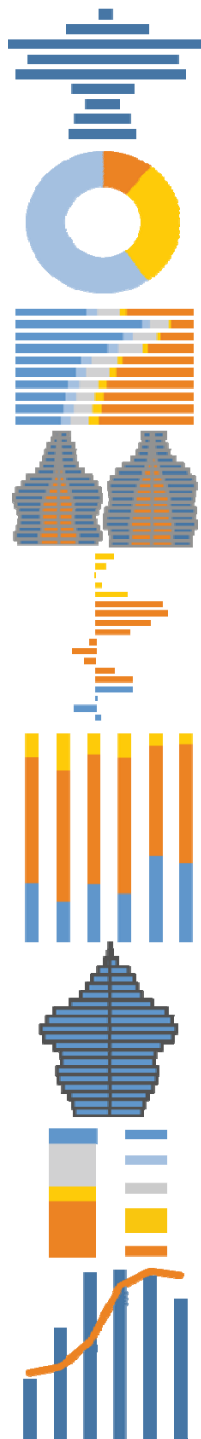


Highlights



Population by Age

**Population Growth:** Alpine County is the least populous county in California with just under 1,200 people. The total population declined slightly over the past ten years, with a small decline in the number of young and working-age people, but an increase in the number of people age 65+.

**Diversity:** Alpine County is predominantly white, non-Hispanic at 73% of the total. The racial and ethnic makeup of the county did not change substantially over the past ten years. American Indians and Alaska Natives account for 18% of the population, up from 16% in 2000. Race and ethnicity vary substantially by age—of people under age 20, 57% are white, non-Hispanic, 27% are American Indian and Alaska Native, and 14% are Hispanic; among people age 65+, 86% are white, non-Hispanic.

**Age structure:** Alpine County is older than California overall, and over the past decade, the age structure shifted upward due to an increase in the number of people age 65+ and a decrease in the young and working-age population. The median age increased from 39 to 47, much higher than the state median age of 35. People age 65+ make up 14% of the total population in Alpine County, up significantly from 10% in 2000, and much higher than the 11% statewide.

**Households:** Nonfamily households consisting of a householder living alone or two or more unrelated individuals are more common in Alpine than statewide—40% of households here compared with 31% in California overall. Among the population age 65+, 32% live alone, compared with 25% statewide, and the majority of those living alone are men.

**Education:** Far more adults have completed high school in Alpine County than statewide—91% here compared with 80% in California overall. However, slightly fewer have earned Bachelor’s degrees—27% here compared with 30% statewide.

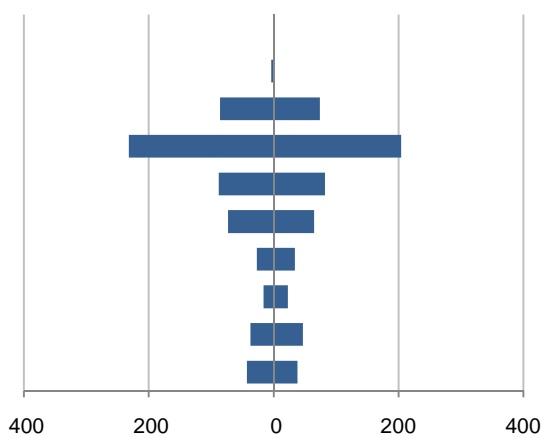
**Unemployment:** The unemployment rate, 20% in June 2011, is much higher than in California overall, and is up from just 7% in 2006.

*This demographic profile is part of a series of library jurisdiction profiles prepared for the California State Library by the Stanford Center on Longevity. The project, "Understanding California's Shifting Demographics," was supported in whole by the U.S. Institute of Museum and Library Services under the provisions of the Library Services and Technology Act, administered in California by the State Librarian. The opinions expressed herein do not necessarily reflect the position or policy of the U.S. Institute of Museum and Library Services or the California State Library, and no official endorsement by the U.S. Institute of Museum and Library Services or the California State Library should be inferred.*

Key Indicators			
		2000	2010
<b>Population Growth</b>			
	Total population	1,208	1,175
	10-year growth	8.5%	-2.7%
<b>Diversity</b>			
	% Hispanic	7.8%	7.1%
	% Asian, non-Hispanic	0.3%	0.6%
	% White, non-Hispanic	71.8%	72.5%
	% Black, non-Hispanic	0.6%	0.0%
<b>Aging</b>			
	% 65+	9.9%	14.1%
	Median age	39.3	46.7
<b>Households</b>			
	% Married couple with children	16.9%	14.9%
	% Living alone	27.8%	29.4%

1. Population by Library-Defined Age Group, 2010

Males on left, females on right

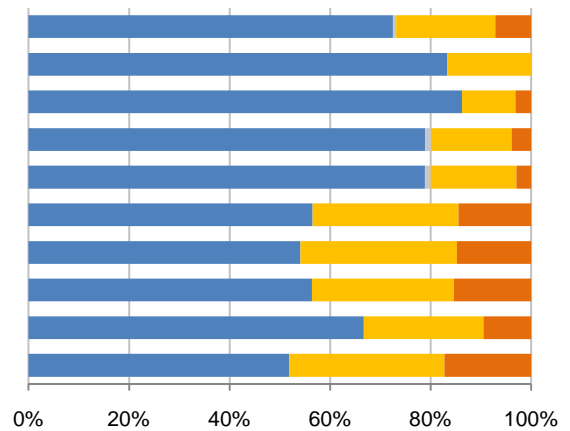


2. Race and Ethnicity by Library-Defined Age Group, 2010

White, NH Black, NH Asian, NH Other, NH Hispanic

Age group

- Total
- 85+, Oldest
- 65 to 84, Older adults
- 46 to 64, Midlife
- 33 to 45, Adult
- 19 to 32, Young
- 14 to 18, Teens
- 11 to 13, Tweens
- 6 to 10, School age
- 0 to 5, Infants/toddlers

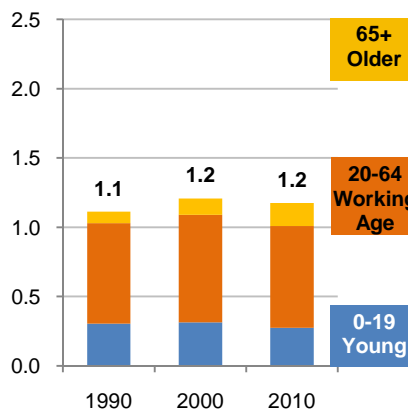


3. Population Growth by Library-Defined Age Group, 2000-10

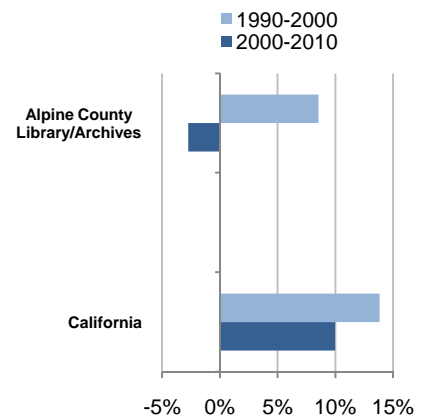
	2010	Change	% Change
<b>Total</b>	1,175	-33	-2.7%
<b>85+</b>	6	-7	-53.8%
<b>65 to 84</b>	160	53	49.5%
<b>46 to 64</b>	436	117	36.7%
<b>33 to 45</b>	170	-96	-36.1%
<b>19 to 32</b>	138	-74	-34.9%
<b>14 to 18</b>	61	-37	-37.8%
<b>11 to 13</b>	39	-12	-23.5%
<b>6 to 10</b>	84	16	23.5%
<b>0 to 5</b>	81	7	9.5%

4. Population Total, 1990-2010

In thousands



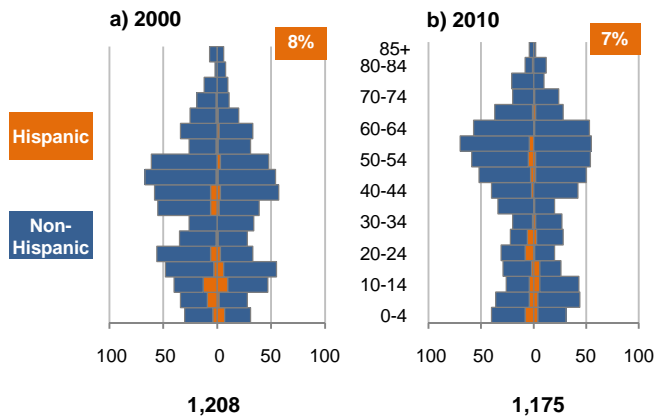
5. 10-Year Population Change



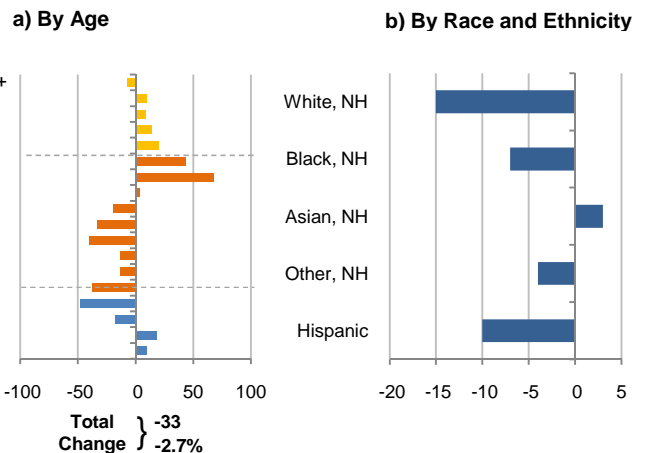
Source: US Census 2010, 2000, or 1990

6. Population by 5-Year Age Brackets

Males on left, females on right

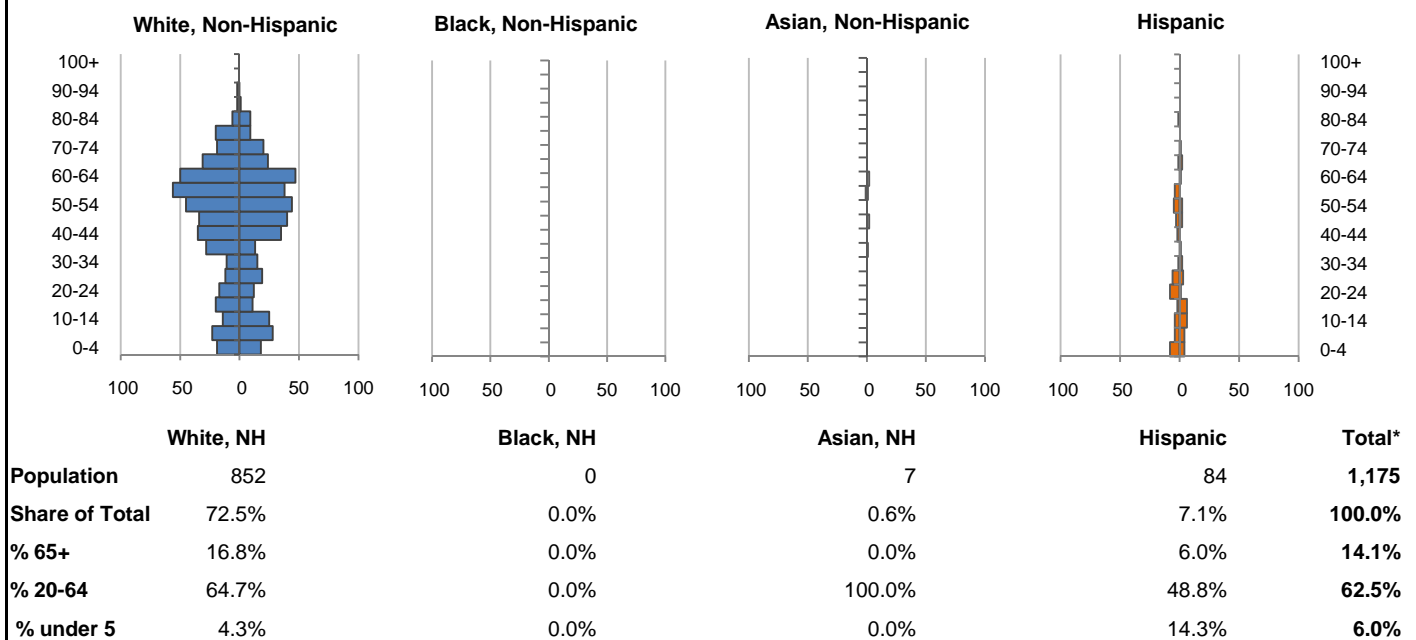


7. 10-Year Change in Population, 2000-10

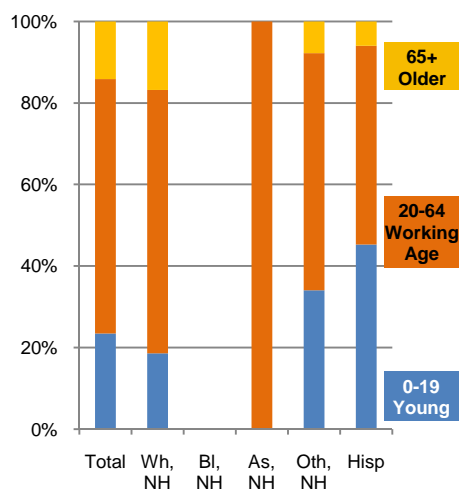


8. Population by Age, Race, and Ethnicity, 2010

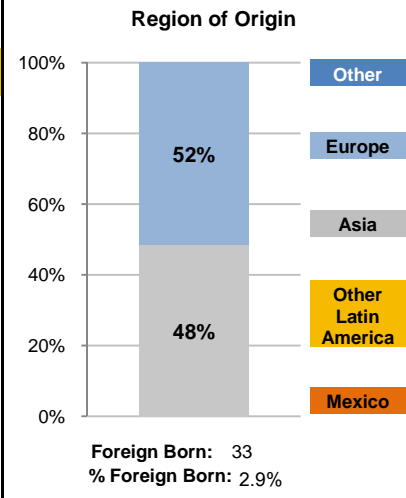
Males on left, females on right



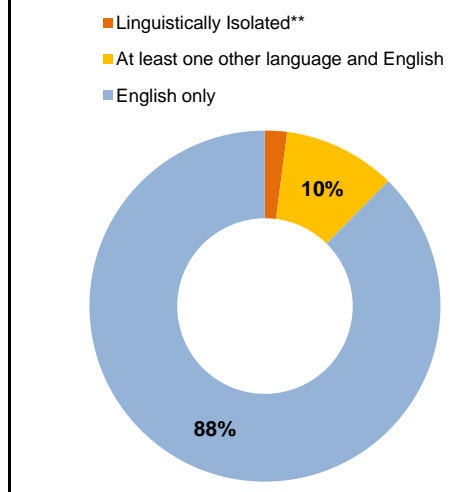
9. Age Mix by Race and Ethnicity, 2010



10. Foreign Born, 2005-09



11. Household Language, 2005-09

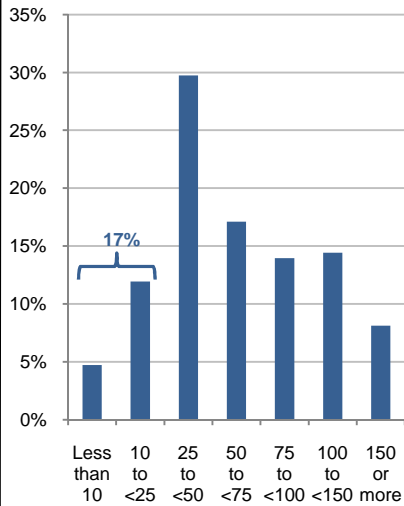


Wh=White; Bl=Black; As=Asian; Oth=Other Race or Two or More Races; Hisp=Hispanic; NH=Non-Hispanic; ACS=American Community Survey 2005-09  
 \*See pages 5-6 for detail on Other, Non-Hispanic  
 \*\*Linguistically Isolated = No one in the household age 14 and over speaks English at least "very well"

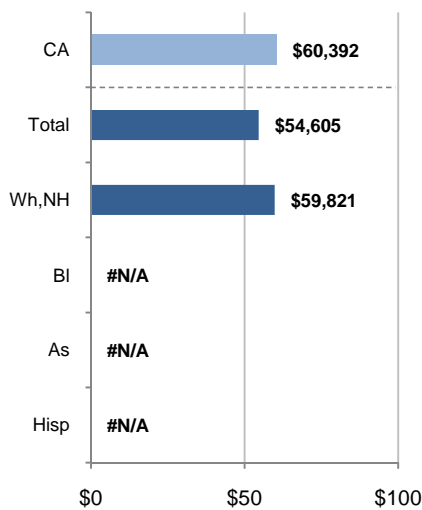
12. Household Income, 2005-09

In thousands of \$ (2009)

a) Income Distribution



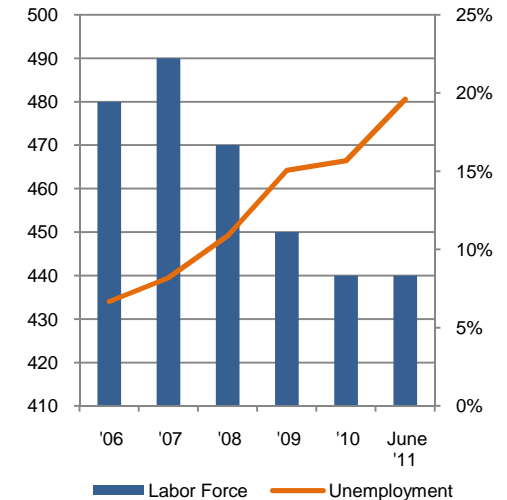
b) Median Household Income by Race and Ethnicity\*



13. Labor Force and Unemployment, 2006-11

Labor Force

Unemployment Rate

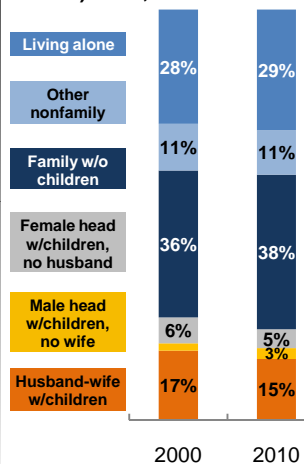


Source: CA Employment Development Department

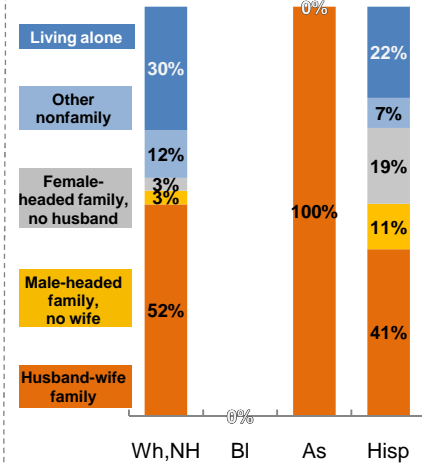
14. Household Type, 2010

% of all households

a) Total, 2000-10

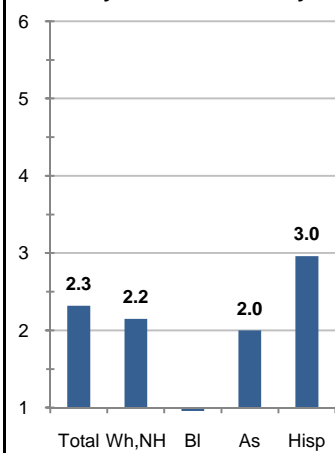


b) By Race and Ethnicity,\* 2010

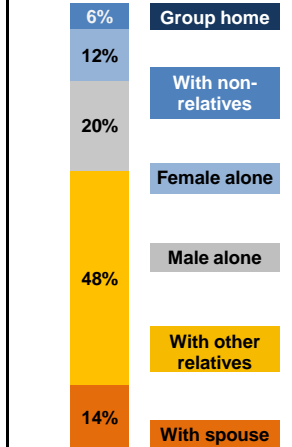


15. Average Household Size, 2010

By Race and Ethnicity\*



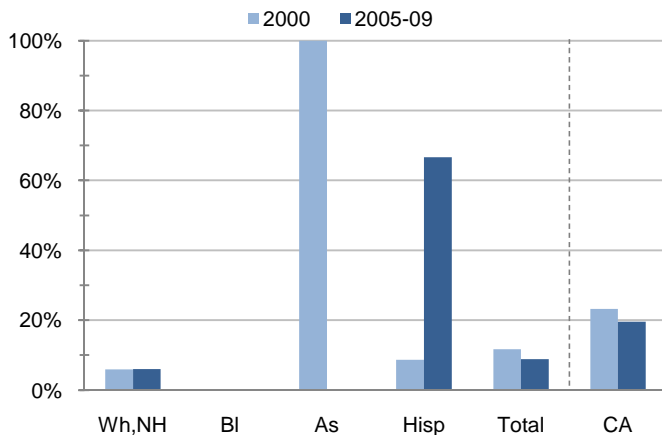
16. Living Arrangements Age 65+, 2005-09



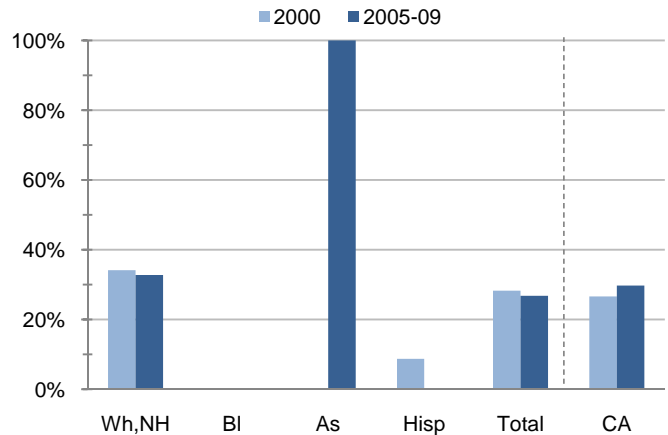
Source: ACS 2005-09

17. Educational Attainment for the Population Age 25 and Over by Race and Ethnicity\*

a) % of Adults Who Did Not Complete High School



b) % of Adults Who Attained a BA or Higher



Source: Census 2000, ACS 2005-09

\*Wh,NH=White,Non-Hispanic; BI=Black,Hispanic Inclusive; As=Asian,Hispanic Inclusive; Hisp=Hispanic(Includes all races); CA=California Total

Note: In the American Community Survey and for Census variables other than population, Hispanic origin is not broken out for all races.

	White, Non- Hispanic	Black, Non- Hispanic	Asian, Non- Hispanic	Other, Non- Hispanic	Detail for Other, Non-Hispanic				Hispanic or Latino	Total Population
					American Indian & Alaska Native	Native Hawaiian & Pacific Islander	Some Other Race	Two or More Races		
<b>A. Total Population</b>										
<b>2000 Total</b>	867	7	4	236	188	1	6	41	94	1,208
<b>2000 % of Total</b>	71.8%	0.6%	0.3%	19.5%	15.6%	0.1%	0.5%	3.4%	7.8%	100.0%
<b>2010 Total</b>	852	0	7	232	210	0	1	21	84	1,175
<b>2010 % of Total</b>	72.5%	0.0%	0.6%	19.7%	17.9%	0.0%	0.1%	1.8%	7.1%	100.0%
<b>B. Population in Major Age Groups by Race and Ethnicity</b>										
<b>2000</b>										
0-19	181	3	0	75	57	0	0	18	54	313
20-64	587	4	4	143	117	1	3	22	37	775
65+	99	0	0	18	14	0	3	1	3	120
85+	12	0	0	1	1	0	0	0	0	13
<b>2010</b>										
0-19	158	0	0	79	74	0	0	5	38	275
20-64	551	0	7	135	121	0	1	13	41	734
65+	143	0	0	18	15	0	0	3	5	166
85+	5	0	0	1	1	0	0	0	0	6
<b>C. Age Mix for Each Racial and Ethnic Group</b>										
<b>2000</b>										
0-19	20.9%	42.9%	0.0%	31.8%	30.3%	0.0%	0.0%	43.9%	57.4%	25.9%
20-64	67.7%	57.1%	100.0%	60.6%	62.2%	100.0%	50.0%	53.7%	39.4%	64.2%
65+	11.4%	0.0%	0.0%	7.6%	7.4%	0.0%	50.0%	2.4%	3.2%	9.9%
85+	1.4%	0.0%	0.0%	0.4%	0.5%	0.0%	0.0%	0.0%	0.0%	1.1%
<b>2010</b>										
0-19	18.5%	N/A	0.0%	34.1%	35.2%	N/A	0.0%	23.8%	45.2%	23.4%
20-64	64.7%	N/A	100.0%	58.2%	57.6%	N/A	100.0%	61.9%	48.8%	62.5%
65+	16.8%	N/A	0.0%	7.8%	7.1%	N/A	0.0%	14.3%	6.0%	14.1%
85+	0.6%	N/A	0.0%	0.4%	0.5%	N/A	0.0%	0.0%	0.0%	0.5%
<b>D. Racial and Ethnic Mix for Each Age Group</b>										
<b>2000</b>										
0-19	57.8%	1.0%	0.0%	24.0%	18.2%	0.0%	0.0%	5.8%	17.3%	100.0%
20-64	75.7%	0.5%	0.5%	18.5%	15.1%	0.1%	0.4%	2.8%	4.8%	100.0%
65+	82.5%	0.0%	0.0%	15.0%	11.7%	0.0%	2.5%	0.8%	2.5%	100.0%
85+	92.3%	0.0%	0.0%	7.7%	7.7%	0.0%	0.0%	0.0%	0.0%	100.0%
<b>2010</b>										
0-19	57.5%	0.0%	0.0%	28.7%	26.9%	0.0%	0.0%	1.8%	13.8%	100.0%
20-64	75.1%	0.0%	1.0%	18.4%	16.5%	0.0%	0.1%	1.8%	5.6%	100.0%
65+	86.1%	0.0%	0.0%	10.8%	9.0%	0.0%	0.0%	1.8%	3.0%	100.0%
85+	83.3%	0.0%	0.0%	16.7%	16.7%	0.0%	0.0%	0.0%	0.0%	100.0%
<b>E. Population Growth</b>										
<b>2000-10, Change</b>										
0-19	-23	-3	0	4	17	0	0	-13	-16	-38
20-64	-36	-4	3	-8	4	-1	-2	-9	4	-41
65+	44	0	0	0	1	0	-3	2	2	46
85+	-7	0	0	0	0	0	0	0	0	-7
<b>Total</b>	<b>-15</b>	<b>-7</b>	<b>3</b>	<b>-4</b>	<b>22</b>	<b>-1</b>	<b>-5</b>	<b>-20</b>	<b>-10</b>	<b>-33</b>
<b>2000-10, % Change</b>										
0-19	-12.7%	-100.0%	N/A	5.3%	29.8%	N/A	N/A	-72.2%	-29.6%	-12.1%
20-64	-6.1%	-100.0%	75.0%	-5.6%	3.4%	-100.0%	-66.7%	-40.9%	10.8%	-5.3%
65+	44.4%	N/A	N/A	0.0%	7.1%	N/A	-100.0%	200.0%	66.7%	38.3%
85+	-58.3%	N/A	N/A	0.0%	0.0%	N/A	N/A	N/A	N/A	-53.8%
<b>Total</b>	<b>-1.7%</b>	<b>-100.0%</b>	<b>75.0%</b>	<b>-1.7%</b>	<b>11.7%</b>	<b>-100.0%</b>	<b>-83.3%</b>	<b>-48.8%</b>	<b>-10.6%</b>	<b>-2.7%</b>

Source: US Census 2010, 2000

	White, Non- Hispanic	Black, Non- Hispanic	Asian, Non- Hispanic	Other, Non- Hispanic	Detail for Other, Non-Hispanic				Hispanic or Latino	Total Population 2010
					American Indian & Alaska Native	Native Hawaiian & Pacific Islander	Some Other Race	Two or More Races		
<b>F. Population by Library-Defined Age Groups, 2010</b>										
0-5	42	0	0	25	24	0	0	1	14	81
6-10	56	0	0	20	20	0	0	0	8	84
11-13	22	0	0	11	10	0	0	1	6	39
14-18	33	0	0	19	16	0	0	3	9	61
19-32	78	0	0	40	38	0	0	2	20	138
33-45	134	0	2	29	26	0	0	3	5	170
46-64	344	0	5	70	61	0	1	8	17	436
65-84	138	0	0	17	14	0	0	3	5	160
85+	5	0	0	1	1	0	0	0	0	6
Total	852	0	7	232	210	0	1	21	84	1,175
<b>G. Population by 5-Year Age Brackets, 2010</b>										
0-4	37	0	0	22	21	0	0	1	12	71
5-9	51	0	0	21	21	0	0	0	8	80
10-14	39	0	0	20	17	0	0	3	10	69
15-19	31	0	0	16	15	0	0	1	8	55
20-24	29	0	0	13	12	0	0	1	9	51
25-29	31	0	0	10	10	0	0	0	9	50
30-34	26	0	0	18	16	0	0	2	3	47
35-39	41	0	1	11	10	0	0	1	1	54
40-44	70	0	0	10	9	0	0	1	2	82
45-49	74	0	2	21	18	0	0	3	5	102
50-54	89	0	0	17	16	0	0	1	7	113
55-59	94	0	2	25	22	0	0	3	4	125
60-64	97	0	2	10	8	0	1	1	1	110
65-69	55	0	0	7	5	0	0	2	3	65
70-74	39	0	0	4	4	0	0	0	1	44
75-79	29	0	0	2	2	0	0	0	0	31
80-84	15	0	0	4	3	0	0	1	1	20
85-89	3	0	0	0	0	0	0	0	0	3
90-94	2	0	0	1	1	0	0	0	0	3
95-99	0	0	0	0	0	0	0	0	0	0
100+	0	0	0	0	0	0	0	0	0	0
Total	852	0	7	232	210	0	1	21	84	1,175
<b>H. Median Age, 2000-10</b>										
	White, Non- Hispanic	Black, Hispanic Inclusive	Asian, Hispanic Inclusive		American Indian & Alaska Native, Hispanic Inclusive	Native Hawaiian & Pacific Islander, Hispanic Inclusive	Some Other Race, Hispanic Inclusive	Two or More Races, Hispanic Inclusive	Hispanic or Latino	Total Population
<b>2000</b>	42.8	26.5	38.0		31.3	20.5	25.5	17.5	15.7	39.3
<b>2010</b>	49.8	0.0	58.5		29.8	0.0	26.5	35.5	24.0	46.7

Source: US Census 2010, 2000

Note: In the American Community Survey and for Census variables other than population, Hispanic origin is not broken out for all races.

I. Income Distribution, 2005-09			J. Median Household Income by Race and Ethnicity, 2005-09 (\$2009)						
Range (ths)	Households	% of Total	White, NH	Black	Asian	Hispanic	Total	% of CA	California
<\$10	21	4.7%	\$59,821	#N/A	#N/A	#N/A	\$54,605	90.4%	\$60,392
\$10 to <\$25	53	11.9%							
\$25 to <\$50	132	29.7%							
\$50 to <\$75	76	17.1%							
\$75 to <\$100	62	14.0%							
\$100 to <\$150	64	14.4%							
\$150+	36	8.1%							
K. Household Type, 2000-10			2000	2000,%	2010	2010,%			
<b>Total households</b>			492	100.0%	497	100.0%			
Family Households			299	60.8%	297	59.8%			
Husband-wife w/children			83	16.9%	74	14.9%			
Female head, no husband, w/children			31	6.3%	23	4.6%			
Male head, no wife, w/children			9	1.8%	13	2.6%			
Without children			176	35.8%	187	37.6%			
Nonfamily households			193	39.2%	200	40.2%			
Living alone			137	27.8%	146	29.4%			
Other nonfamily			56	11.4%	54	10.9%	Source: US Census 2010, 2000		
L. Household Type by Race and Ethnicity, 2010			White, NH	Black	Asian	Hispanic	Total		
<b>Total households</b>			385	0	2	27	497		
Husband-wife family			51.7%	#DIV/0!	100.0%	40.7%	46.5%		
Family with male head, no wife			3.4%	#DIV/0!	0.0%	11.1%	5.2%		
Family with female head, no husband			3.1%	#DIV/0!	0.0%	18.5%	8.0%		
Living alone			30.1%	#DIV/0!	0.0%	22.2%	29.4%		
Other nonfamily			11.7%	#DIV/0!	0.0%	7.4%	10.9%	Source: US Census 2010	
M. Poverty, 2005-09							California		
<i>Percentage of families and people whose income in the past 12 months is below the poverty level</i>									
All families							5.7%	9.8%	
Families w/ related children under 18 years							13.5%	14.5%	
Families w/ female householder, no husband present							0.0%	24.2%	
Families w/ female householder, no husband present w/ related children under 18 years							0.0%	32.2%	
All people							12.2%	13.2%	
Under 18 years							19.1%	18.3%	
18 to 64 years							11.5%	11.9%	
65 years and over							0.0%	8.4%	
N. Educational Attainment, 2005-09			% at each level of educational attainment						
			White, NH	Black	Asian	Hispanic	Total		
<b>Population 25 years and over</b>			546	0	16	6	735		
Less than high school			6.0%	N/A	0.0%	66.7%	8.8%		
High school graduate (includes equivalency)			17.4%	N/A	0.0%	33.3%	24.8%		
Some college or associate's degree			43.8%	N/A	0.0%	0.0%	39.6%		
Bachelor's degree or higher			32.8%	N/A	100.0%	0.0%	26.8%		
O. Employment Status, 2010-11			2010	June 2011					
In civilian labor force			440	440					
Employed			370	350					
Unemployed, % of labor force			15.7%	19.6%	Source: CA Employment Development Department				
P. Occupation, 2005-09			Estimate		Percent				
<b>Civilian employed population, 16 yrs &amp; over</b>			528		100.0%				
Management, professional, and related occupations			250		47.3%				
Service occupations			75		14.2%				
Sales and office occupations			74		14.0%				
Farming, fishing, and forestry occupations			2		0.4%				
Construction, extraction, maintenance, and repair occupations			79		15.0%				
Production, transportation, and material moving occupations			48		9.1%				
Q. Class of Worker, 2005-09			Estimate		Percent				
<b>Civilian employed population, 16 yrs &amp; over</b>			528		100.0%				
Private, for profit, wage and salary employee			203		38.4%				
Private, not for profit, wage and salary employee			27		5.1%				
Private, for profit, wage and salary self-employed in own business			37		7.0%				
Government workers			180		34.1%				
Self-employed in own not incorporated business			76		14.4%				
Unpaid family workers in family business			5		0.9%				

Source: American Community Survey 2005-09, unless otherwise stated

ProfileTemplate 9-8-11.xlsr 9/11/2011 14:06

Note: In the American Community Survey and for US Census variables other than population, Hispanic origin is not broken out for all races. White, NH represents White, Non-Hispanic. Black and Asian are Hispanic inclusive.