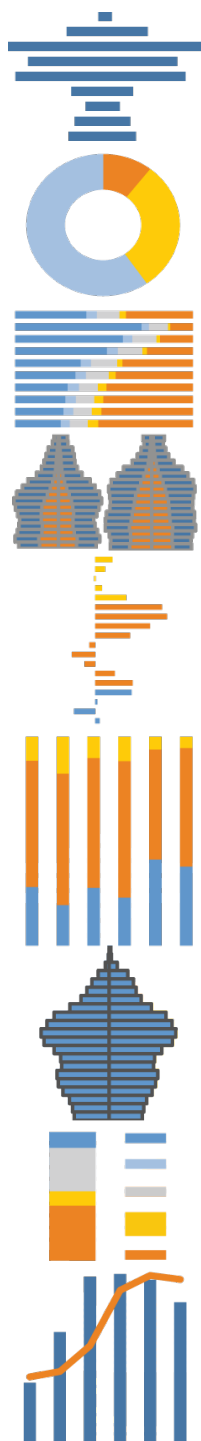


Highlights



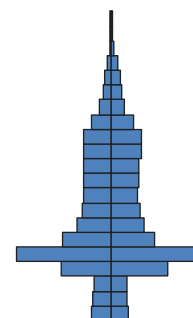
Population Growth: The total population of Berkeley increased by 10% over the past decade to 113,000. The greatest absolute increases occurred among the white, non-Hispanic and Asian populations, which each grew by roughly 5,000. The black population declined by nearly 3,000.

Diversity: In general, the racial and ethnic composition of Berkeley stayed relatively stable over the past ten years. The population remains majority white, non-Hispanic, at 55%. The share of Asians increased from 16% to 19%, while the share of blacks declined from 13% to 10%.

Age Structure: Due to the large shares of college students and working-age population, Berkeley remains relatively young, with a median age of 31 compared with 35 statewide. A relatively large share of the population in Berkeley is working age, 68% compared with 61% statewide, and a relatively small share of the population is under 20, 21% compared with 28% statewide.

Households: Nonfamily households account for 59% of all households in Berkeley, a figure much higher than the statewide rate of 31%. Further, 37% of all households are single-person, compared with 23% in California overall. In addition, the traditional family—a married couple with children—is relatively less common in Berkeley than in the state; 12% of all households consist of traditional families, compared with 23% statewide.

Education: In general, educational attainment in Berkeley is substantially higher than in the state. In Berkeley, 67% of adults have at least a Bachelor’s degree compared with 30% statewide. Further, only 6% of individuals did not graduate from high school compared with 20% in California as a whole.



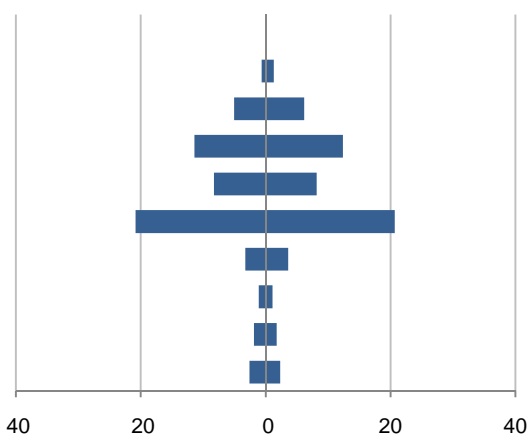
Population by Age

This demographic profile is part of a series of library jurisdiction profiles prepared for the California State Library by the Stanford Center on Longevity. The project, "Understanding California's Shifting Demographics," was supported in whole by the U.S. Institute of Museum and Library Services under the provisions of the Library Services and Technology Act, administered in California by the State Librarian. The opinions expressed herein do not necessarily reflect the position or policy of the U.S. Institute of Museum and Library Services or the California State Library, and no official endorsement by the U.S. Institute of Museum and Library Services or the California State Library should be inferred.

Key Indicators			
		2000	2010
Population Growth			
	Total population	102,743	112,580
	10-year growth	0.0%	9.6%
Diversity			
	% Hispanic	9.7%	10.8%
	% Asian, non-Hispanic	16.3%	19.1%
	% White, non-Hispanic	55.2%	54.7%
	% Black, non-Hispanic	13.3%	9.7%
Aging			
	% 65+	10.2%	11.7%
	Median age	32.5	31.0
Households			
	% Married couple with children	12.7%	11.8%
	% Living alone	38.1%	36.7%

1. Population by Library-Defined Age Group, 2010

In thousands; males on left, females on right

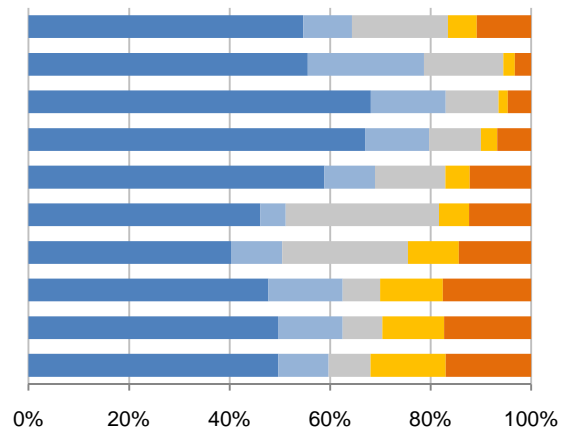


2. Race and Ethnicity by Library-Defined Age Group, 2010

White,NH Black,NH Asian,NH Other,NH Hispanic

Age group

- Total
- 85+, Oldest
- 65 to 84, Older adults
- 46 to 64, Midlife
- 33 to 45, Adult
- 19 to 32, Young
- 14 to 18, Teens
- 11 to 13, Tweens
- 6 to 10, School age
- 0 to 5, Infants/toddlers

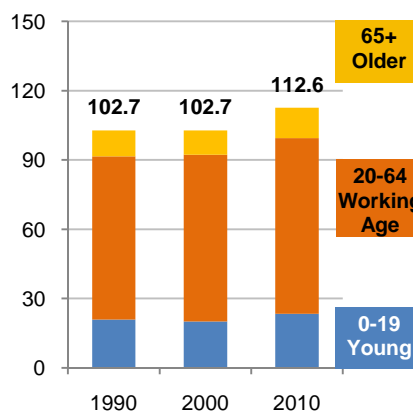


3. Population Growth by Library-Defined Age Group, 2000-10

	2010	Change	% Change
Total	112,580	9,837	9.6%
85+	1,972	450	29.6%
65 to 84	11,204	2,242	25.0%
46 to 64	23,742	2,235	10.4%
33 to 45	16,456	-2,130	-11.5%
19 to 32	41,491	5,891	16.5%
14 to 18	6,889	1,678	32.2%
11 to 13	2,214	-191	-7.9%
6 to 10	3,663	-380	-9.4%
0 to 5	4,949	42	0.9%

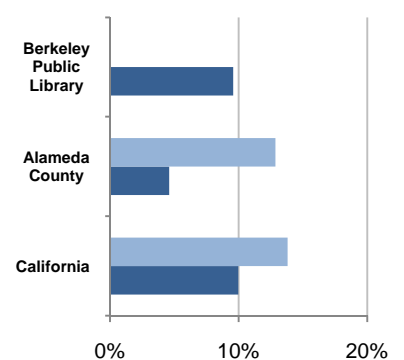
4. Population Total, 1990-2010

In thousands



5. 10-Year Population Change

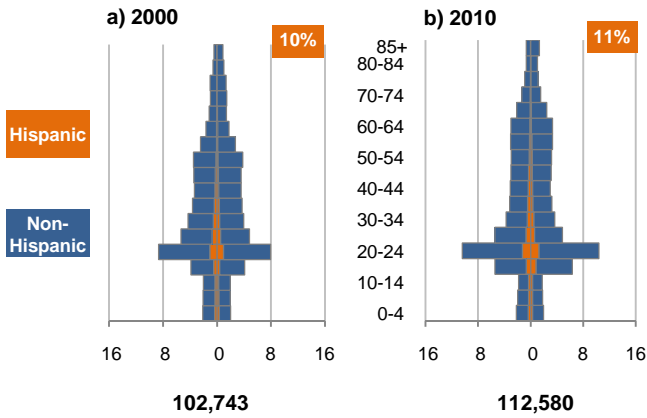
1990-2000 2000-2010



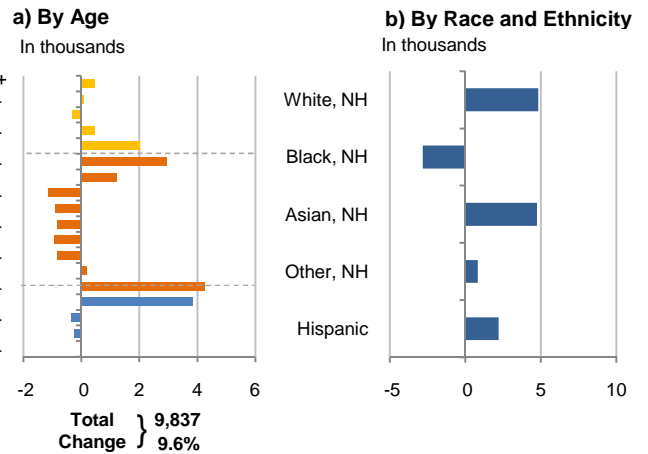
Source: US Census 2010, 2000, or 1990

6. Population by 5-Year Age Brackets

In thousands; males on left, females on right

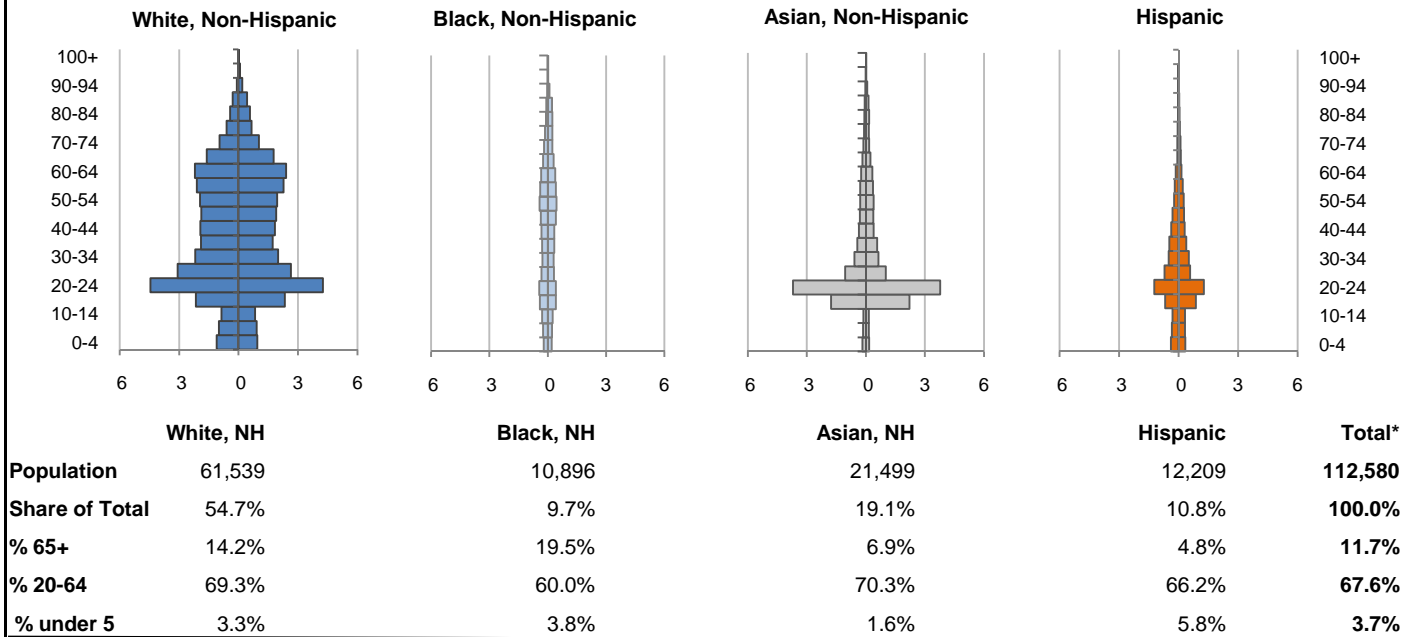


7. 10-Year Change in Population, 2000-10

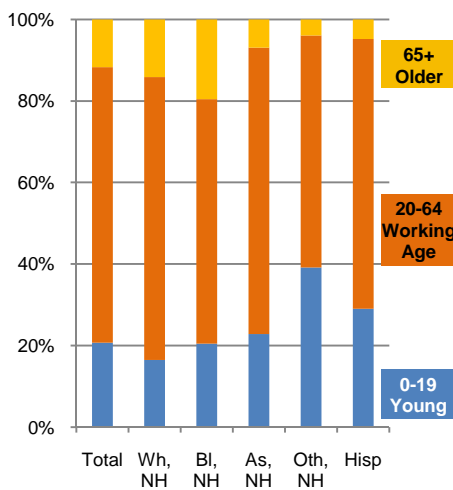


8. Population by Age, Race, and Ethnicity, 2010

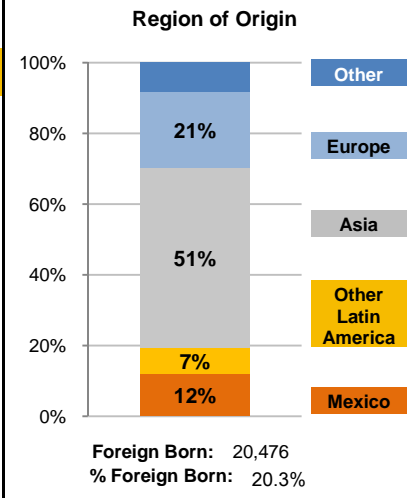
In thousands; males on left, females on right



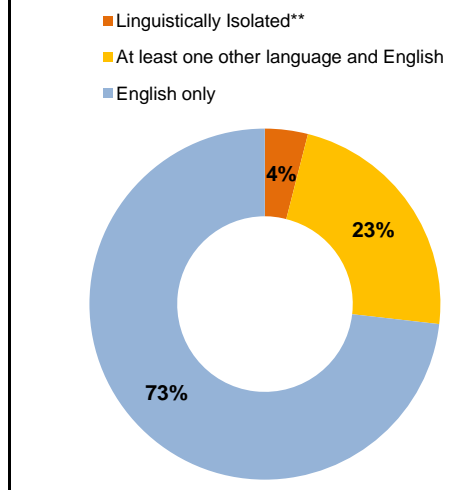
9. Age Mix by Race and Ethnicity, 2010



10. Foreign Born, 2005-09



11. Household Language, 2005-09

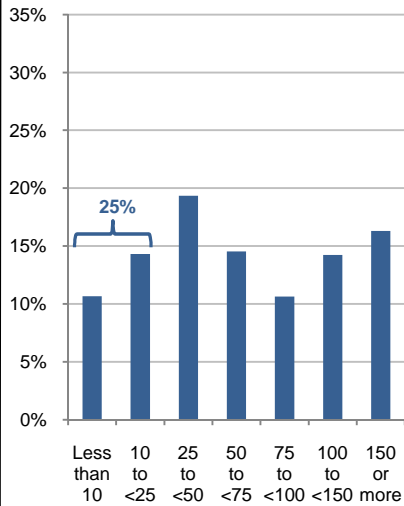


Wh=White; BI=Black; As=Asian; Oth=Other Race or Two or More Races; Hisp=Hispanic; NH=Non-Hispanic; ACS=American Community Survey 2005-09
 *See pages 5-6 for detail on Other, Non-Hispanic
 **Linguistically Isolated = No one in the household age 14 and over speaks English at least "very well"

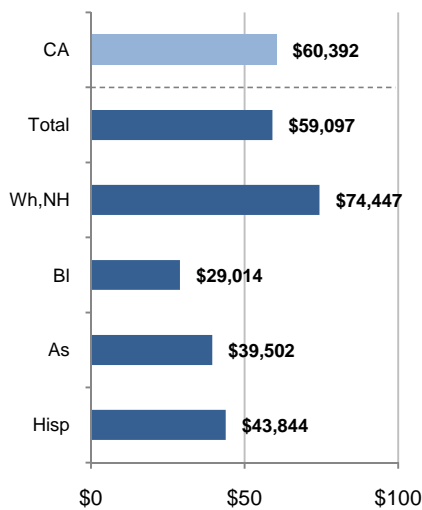
12. Household Income, 2005-09

In thousands of \$ (2009)

a) Income Distribution



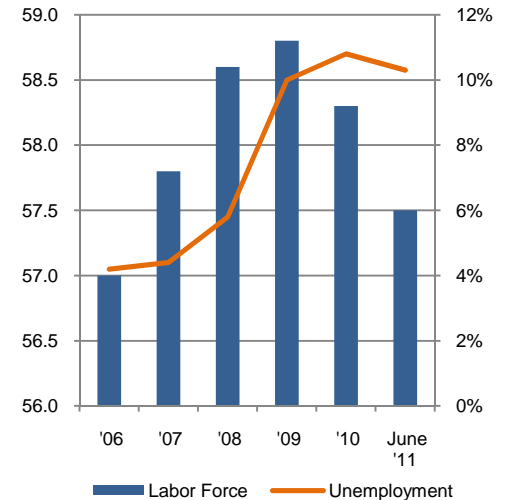
b) Median Household Income by Race and Ethnicity*



13. Labor Force and Unemployment, 2006-11

Labor Force In thousands

Unemployment Rate

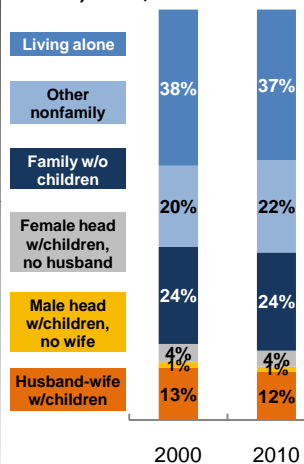


Source: CA Employment Development Department

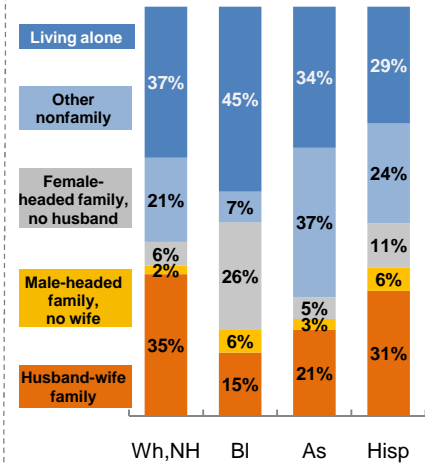
14. Household Type, 2010

% of all households

a) Total, 2000-10

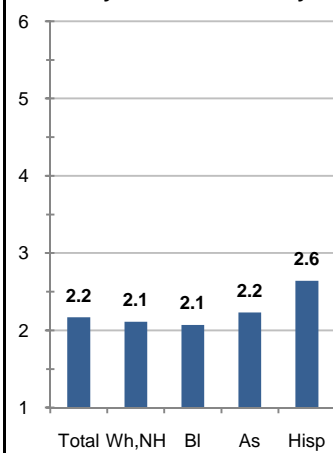


b) By Race and Ethnicity,* 2010

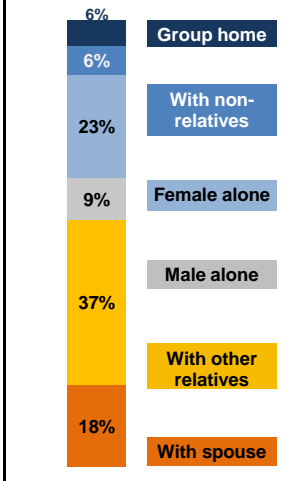


15. Average Household Size, 2010

By Race and Ethnicity*



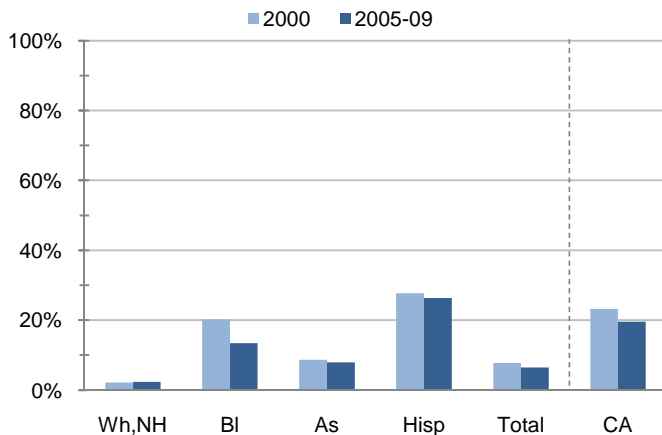
16. Living Arrangements Age 65+, 2005-09



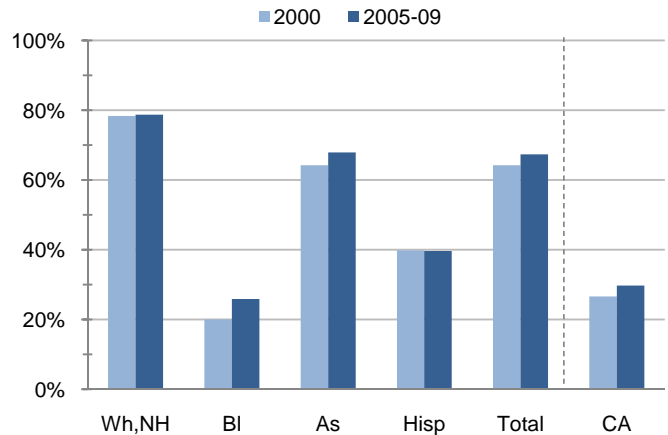
Source: ACS 2005-09

17. Educational Attainment for the Population Age 25 and Over by Race and Ethnicity*

a) % of Adults Who Did Not Complete High School



b) % of Adults Who Attained a BA or Higher



Source: Census 2000, ACS 2005-09

*Wh,NH=White,Non-Hispanic; Bl=Black,Hispanic Inclusive; As=Asian,Hispanic Inclusive; Hisp=Hispanic(Includes all races); CA=California Total

Note: In the American Community Survey and for Census variables other than population, Hispanic origin is not broken out for all races.

	White, Non- Hispanic	Black, Non- Hispanic	Asian, Non- Hispanic	Other, Non- Hispanic	Detail for Other, Non-Hispanic				Hispanic or Latino	Total Population
					American Indian & Alaska Native	Native Hawaiian & Pacific Islander	Some Other Race	Two or More Races		
A. Total Population										
2000 Total	56,691	13,707	16,740	5,604	293	121	598	4,592	10,001	102,743
2000 % of Total	55.2%	13.3%	16.3%	5.5%	0.3%	0.1%	0.6%	4.5%	9.7%	100.0%
2010 Total	61,539	10,896	21,499	6,437	228	170	503	5,536	12,209	112,580
2010 % of Total	54.7%	9.7%	19.1%	5.7%	0.2%	0.2%	0.4%	4.9%	10.8%	100.0%
B. Population in Major Age Groups by Race and Ethnicity										
2000										
0-19	8,793	3,400	3,191	1,870	61	25	191	1,593	2,839	20,093
20-64	41,893	7,702	12,227	3,518	219	91	385	2,823	6,826	72,166
65+	6,005	2,605	1,322	216	13	5	22	176	336	10,484
85+	921	378	158	19	1	1	1	16	46	1,522
2010										
0-19	10,146	2,225	4,910	2,522	39	41	144	2,298	3,538	23,341
20-64	42,671	6,541	15,104	3,661	172	122	328	3,039	8,086	76,063
65+	8,722	2,130	1,485	254	17	7	31	199	585	13,176
85+	1,096	455	312	45	1	0	3	41	64	1,972
C. Age Mix for Each Racial and Ethnic Group										
2000										
0-19	15.5%	24.8%	19.1%	33.4%	20.8%	20.7%	31.9%	34.7%	28.4%	19.6%
20-64	73.9%	56.2%	73.0%	62.8%	74.7%	75.2%	64.4%	61.5%	68.3%	70.2%
65+	10.6%	19.0%	7.9%	3.9%	4.4%	4.1%	3.7%	3.8%	3.4%	10.2%
85+	1.6%	2.8%	0.9%	0.3%	0.3%	0.8%	0.2%	0.3%	0.5%	1.5%
2010										
0-19	16.5%	20.4%	22.8%	39.2%	17.1%	24.1%	28.6%	41.5%	29.0%	20.7%
20-64	69.3%	60.0%	70.3%	56.9%	75.4%	71.8%	65.2%	54.9%	66.2%	67.6%
65+	14.2%	19.5%	6.9%	3.9%	7.5%	4.1%	6.2%	3.6%	4.8%	11.7%
85+	1.8%	4.2%	1.5%	0.7%	0.4%	0.0%	0.6%	0.7%	0.5%	1.8%
D. Racial and Ethnic Mix for Each Age Group										
2000										
0-19	43.8%	16.9%	15.9%	9.3%	0.3%	0.1%	1.0%	7.9%	14.1%	100.0%
20-64	58.1%	10.7%	16.9%	4.9%	0.3%	0.1%	0.5%	3.9%	9.5%	100.0%
65+	57.3%	24.8%	12.6%	2.1%	0.1%	0.0%	0.2%	1.7%	3.2%	100.0%
85+	60.5%	24.8%	10.4%	1.2%	0.1%	0.1%	0.1%	1.1%	3.0%	100.0%
2010										
0-19	43.5%	9.5%	21.0%	10.8%	0.2%	0.2%	0.6%	9.8%	15.2%	100.0%
20-64	56.1%	8.6%	19.9%	4.8%	0.2%	0.2%	0.4%	4.0%	10.6%	100.0%
65+	66.2%	16.2%	11.3%	1.9%	0.1%	0.1%	0.2%	1.5%	4.4%	100.0%
85+	55.6%	23.1%	15.8%	2.3%	0.1%	0.0%	0.2%	2.1%	3.2%	100.0%
E. Population Growth										
2000-10, Change										
0-19	1,353	-1,175	1,719	652	-22	16	-47	705	699	3,248
20-64	778	-1,161	2,877	143	-47	31	-57	216	1,260	3,897
65+	2,717	-475	163	38	4	2	9	23	249	2,692
85+	175	77	154	26	0	-1	2	25	18	450
Total	4,848	-2,811	4,759	833	-65	49	-95	944	2,208	9,837
2000-10, % Change										
0-19	15.4%	-34.6%	53.9%	34.9%	-36.1%	64.0%	-24.6%	44.3%	24.6%	16.2%
20-64	1.9%	-15.1%	23.5%	4.1%	-21.5%	34.1%	-14.8%	7.7%	18.5%	5.4%
65+	45.2%	-18.2%	12.3%	17.6%	30.8%	40.0%	40.9%	13.1%	74.1%	25.7%
85+	19.0%	20.4%	97.5%	136.8%	0.0%	-100.0%	200.0%	156.3%	39.1%	29.6%
Total	8.6%	-20.5%	28.4%	14.9%	-22.2%	40.5%	-15.9%	20.6%	22.1%	9.6%

Source: US Census 2010, 2000

	White, Non- Hispanic	Black, Non- Hispanic	Asian, Non- Hispanic	Other, Non- Hispanic	Detail for Other, Non-Hispanic				Hispanic or Latino	Total Population 2010
					American Indian & Alaska Native	Native Hawaiian & Pacific Islander	Some Other Race	Two or More Races		
F. Population by Library-Defined Age Groups, 2010										
0-5	2,460	494	413	740	6	8	54	672	842	4,949
6-10	1,819	470	289	450	4	8	24	414	635	3,663
11-13	1,056	327	166	276	6	4	24	242	389	2,214
14-18	2,773	703	1,726	696	14	11	29	642	991	6,889
19-32	19,131	2,088	12,669	2,463	82	60	180	2,141	5,140	41,491
33-45	9,683	1,656	2,308	793	48	41	75	629	2,016	16,456
46-64	15,895	3,028	2,443	765	51	31	86	597	1,611	23,742
65-84	7,626	1,675	1,173	209	16	7	28	158	521	11,204
85+	1,096	455	312	45	1	0	3	41	64	1,972
Total	61,539	10,896	21,499	6,437	228	170	503	5,536	12,209	112,580
G. Population by 5-Year Age Brackets, 2010										
0-4	2,047	409	343	623	4	8	45	566	714	4,136
5-9	1,910	448	299	488	6	8	30	444	648	3,793
10-14	1,700	545	287	448	7	6	30	405	630	3,610
15-19	4,489	823	3,981	963	22	19	39	883	1,546	11,802
20-24	8,710	858	7,490	1,267	37	27	87	1,116	2,501	20,826
25-29	5,718	636	2,062	590	21	17	53	499	1,296	10,302
30-34	4,195	585	1,228	373	18	11	40	304	1,014	7,395
35-39	3,618	617	1,007	330	21	18	32	259	849	6,421
40-44	3,774	647	739	269	18	13	26	212	684	6,113
45-49	3,783	787	684	284	23	13	23	225	579	6,117
50-54	3,891	874	671	224	12	15	24	173	476	6,136
55-59	4,367	805	651	181	14	5	19	143	409	6,413
60-64	4,615	732	572	143	8	3	24	108	278	6,340
65-69	3,368	544	402	97	10	3	14	70	175	4,586
70-74	1,993	422	278	40	3	3	6	28	158	2,891
75-79	1,259	382	244	46	3	1	7	35	113	2,044
80-84	1,006	327	249	26	0	0	1	25	75	1,683
85-89	714	290	198	31	1	0	1	29	43	1,276
90-94	278	119	98	10	0	0	2	8	18	523
95-99	94	35	14	3	0	0	0	3	3	149
100+	10	11	2	1	0	0	0	1	0	24
Total	61,539	10,896	21,499	6,437	228	170	503	5,536	12,209	112,580
H. Median Age, 2000-10										
	White, Non- Hispanic	Black, Hispanic Inclusive	Asian, Hispanic Inclusive		American Indian & Alaska Native, Hispanic Inclusive	Native Hawaiian & Pacific Islander, Hispanic Inclusive	Some Other Race, Hispanic Inclusive	Two or More Races, Hispanic Inclusive	Hispanic or Latino	Total Population
2000	37.4	38.7	24.3		28.6	26.5	24.5	23.4	25.5	32.5
2010	37.8	43.4	22.7		31.3	29.4	24.4	21.7	25.2	31.0

Source: US Census 2010, 2000

Note: In the American Community Survey and for Census variables other than population, Hispanic origin is not broken out for all races.

I. Income Distribution, 2005-09			J. Median Household Income by Race and Ethnicity, 2005-09 (\$2009)						
Range (ths)	Households	% of Total	White, NH	Black	Asian	Hispanic	Total	% of CA	California
<\$10	4,272	10.7%	\$74,447	\$29,014	\$39,502	\$43,844	\$59,097	97.9%	\$60,392
\$10 to <\$25	5,736	14.3%							
\$25 to <\$50	7,755	19.3%							
\$50 to <\$75	5,823	14.5%							
\$75 to <\$100	4,258	10.6%							
\$100 to <\$150	5,704	14.2%							
\$150+	6,531	16.3%							
K. Household Type, 2000-10			2000	2000,%	2010	2010,%			
Total households			45,007	100.0%	46,029	100.0%			
Family Households			18,975	42.2%	18,792	40.8%			
Husband-wife w/children			5,702	12.7%	5,433	11.8%			
Female head, no husband, w/children			1,974	4.4%	1,808	3.9%			
Male head, no wife, w/children			652	1.4%	544	1.2%			
Without children			10,647	23.7%	11,007	23.9%			
Nonfamily households			26,032	57.8%	27,237	59.2%			
Living alone			17,144	38.1%	16,904	36.7%			
Other nonfamily			8,888	19.7%	10,333	22.4%	Source: US Census 2010, 2000		
L. Household Type by Race and Ethnicity, 2010			White, NH	Black	Asian	Hispanic	Total		
Total households			28,019	4,820	7,783	3,687	46,029		
Husband-wife family			34.6%	15.5%	21.1%	30.6%	29.5%		
Family with male head, no wife			2.2%	5.7%	2.6%	5.7%	3.0%		
Family with female head, no husband			5.7%	26.1%	5.3%	10.8%	8.4%		
Living alone			36.8%	45.2%	34.5%	28.5%	36.7%	Source: US	
Other nonfamily			20.6%	7.5%	36.5%	24.4%	22.4%	Census 2010	
M. Poverty, 2005-09									
Percentage of families and people whose income in the past 12 months is below the poverty level								California	
All families						6.3%	9.8%		
Families w/ related children under 18 years						9.2%	14.5%		
Families w/ female householder, no husband present						14.1%	24.2%		
Families w/ female householder, no husband present w/ related children under 18 years						19.7%	32.2%		
All people						18.5%	13.2%		
Under 18 years						10.4%	18.3%		
18 to 64 years						21.9%	11.9%		
65 years and over						7.9%	8.4%		
N. Educational Attainment, 2005-09									
			% at each level of educational attainment						
			White, NH	Black	Asian	Hispanic	Total		
Population 25 years and over			41,022	7,324	8,583	5,636	64,230		
Less than high school			2.3%	13.4%	7.9%	26.3%	6.4%		
High school graduate (includes equivalency)			5.1%	26.0%	8.4%	16.0%	9.0%		
Some college or associate's degree			13.9%	34.7%	15.7%	18.1%	17.2%		
Bachelor's degree or higher			78.7%	25.9%	67.9%	39.6%	67.4%		
O. Employment Status, 2010-11									
			2010	June 2011					
In civilian labor force			58,300	57,500					
Employed			52,000	51,600					
Unemployed, % of labor force			10.8%	10.3%	Source: CA Employment Development Department				
P. Occupation, 2005-09									
					Estimate	Percent			
Civilian employed population, 16 yrs & over					50,424	100.0%			
Management, professional, and related occupations					31,265	62.0%			
Service occupations					5,274	10.5%			
Sales and office occupations					9,888	19.6%			
Farming, fishing, and forestry occupations					122	0.2%			
Construction, extraction, maintenance, and repair occupations					2,044	4.1%			
Production, transportation, and material moving occupations					1,831	3.6%			
Q. Class of Worker, 2005-09									
					Estimate	Percent			
Civilian employed population, 16 yrs & over					50,424	100.0%			
Private, for profit, wage and salary employee					21,788	43.2%			
Private, not for profit, wage and salary employee					7,696	15.3%			
Private, for profit, wage and salary self-employed in own business					1,521	3.0%			
Government workers					12,749	25.3%			
Self-employed in own not incorporated business					6,594	13.1%			
Unpaid family workers in family business					76	0.2%			

Source: American Community Survey 2005-09, unless otherwise stated

ProfileTemplate 9-8-11.xlsr 9/8/2011 16:06

Note: In the American Community Survey and for US Census variables other than population, Hispanic origin is not broken out for all races. White, NH represents White, Non-Hispanic. Black and Asian are Hispanic inclusive.