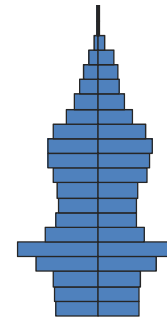
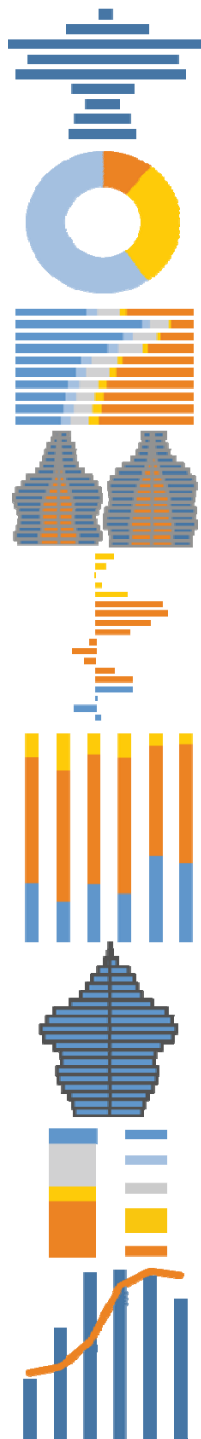


Highlights



Population by Age

Population Growth: The total population in Butte County grew by 8% over the past decade to 220,000. All racial and ethnic groups increased in population, especially Hispanics, whose population increased by 10,000 people. Despite the overall growth, the number of young people declined by 1,000.

Diversity: The population in Butte County is predominantly white, non-Hispanic, though this share decreased from 80% to 75% of the total between 2000 and 2010. Meanwhile, the Hispanic share increased from 11% to 14%.

Age structure: Butte County is older than California overall, with a median age of 37 compared with the state median of 35. The population age 65+ increased but the share declined slightly to 15%, still much higher than the statewide 11%.

Households: Nonfamily households consisting of a householder living alone or two or more unrelated individuals are more common in Butte County than statewide—40% of households here compared with 31% in California overall. Older people are also slightly more likely to be living alone—28% compared with 25% statewide, the majority of whom are older women.

Education: High school attainment is higher but college attainment is lower than in the state overall. This jurisdiction has a smaller share of adults who have not completed high school (14%) than does California as a whole (20%). Conversely, a smaller share of adults here have earned a Bachelor’s degree or higher (25%) compared with adults in the state (30%).

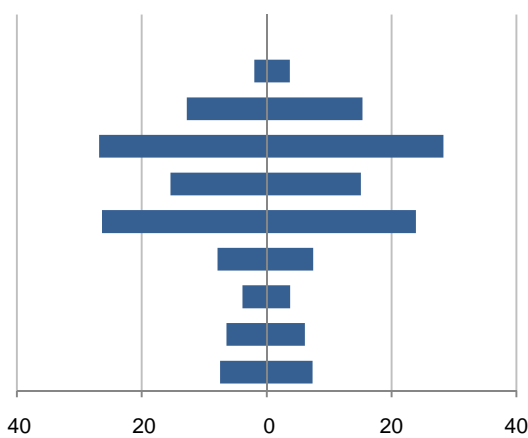
Income: Incomes are relatively low in Butte County, with median household income of \$42,000, 70% of the California median. The majority of households, 57%, have an income less than \$50,000 compared with 42% of households statewide.

This demographic profile is part of a series of library jurisdiction profiles prepared for the California State Library by the Stanford Center on Longevity. The project, "Understanding California's Shifting Demographics," was supported in whole by the U.S. Institute of Museum and Library Services under the provisions of the Library Services and Technology Act, administered in California by the State Librarian. The opinions expressed herein do not necessarily reflect the position or policy of the U.S. Institute of Museum and Library Services or the California State Library, and no official endorsement by the U.S. Institute of Museum and Library Services or the California State Library should be inferred.

Key Indicators			
		2000	2010
Population Growth			
	Total population	203,171	220,000
	10-year growth	11.6%	8.3%
Diversity			
	% Hispanic	10.5%	14.1%
	% Asian, non-Hispanic	3.3%	4.1%
	% White, non-Hispanic	80.0%	75.2%
	% Black, non-Hispanic	1.3%	1.4%
Aging			
	% 65+	15.8%	15.4%
	Median age	35.8	37.2
Households			
	% Married couple with children	19.7%	15.5%
	% Living alone	27.1%	27.9%

1. Population by Library-Defined Age Group, 2010

In thousands; males on left, females on right

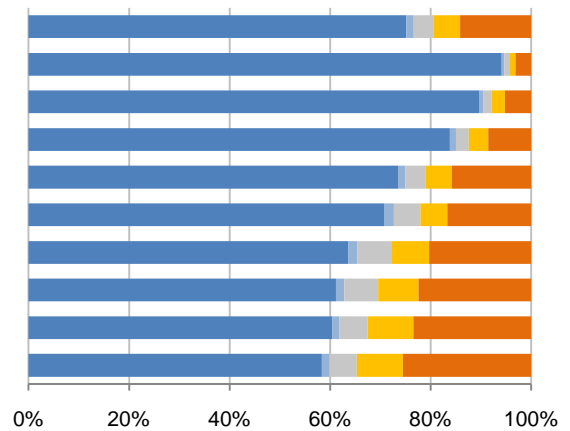


2. Race and Ethnicity by Library-Defined Age Group, 2010

Legend: White,NH (blue), Black,NH (light blue), Asian,NH (grey), Other,NH (yellow), Hispanic (orange)

Age group

Total
85+, Oldest
65 to 84, Older adults
46 to 64, Midlife
33 to 45, Adult
19 to 32, Young
14 to 18, Teens
11 to 13, Tweens
6 to 10, School age
0 to 5, Infants/toddlers

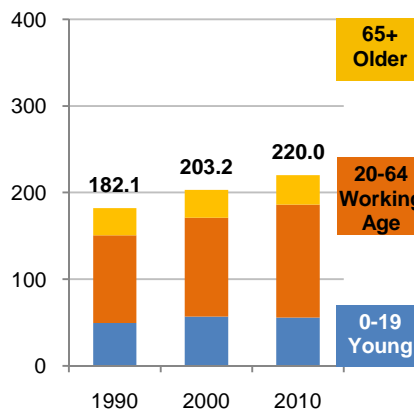


3. Population Growth by Library-Defined Age Group, 2000-10

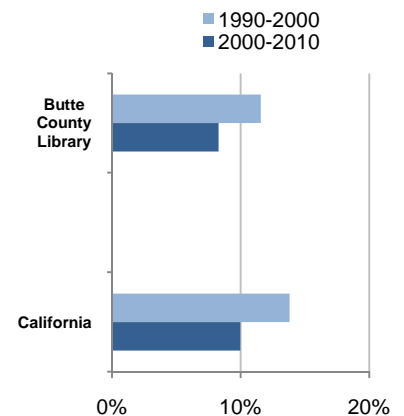
	2010	Change	% Change
Total	220,000	16,829	8.3%
85+	5,670	1,451	34.4%
65 to 84	28,147	310	1.1%
46 to 64	55,143	13,792	33.4%
33 to 45	30,477	-4,056	-11.7%
19 to 32	50,234	7,518	17.6%
14 to 18	15,327	-358	-2.3%
11 to 13	7,629	-1,184	-13.4%
6 to 10	12,540	-1,297	-9.4%
0 to 5	14,833	653	4.6%

4. Population Total, 1990-2010

In thousands



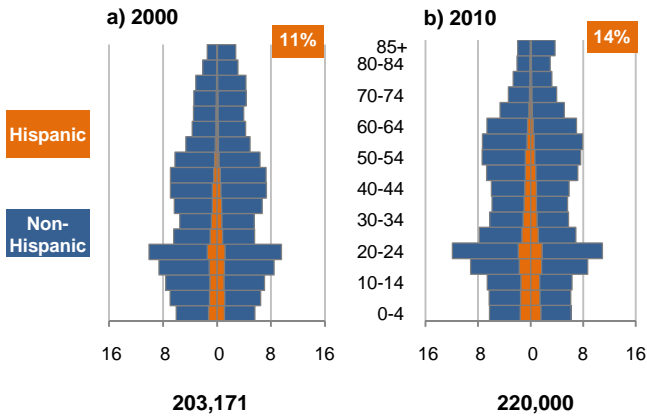
5. 10-Year Population Change



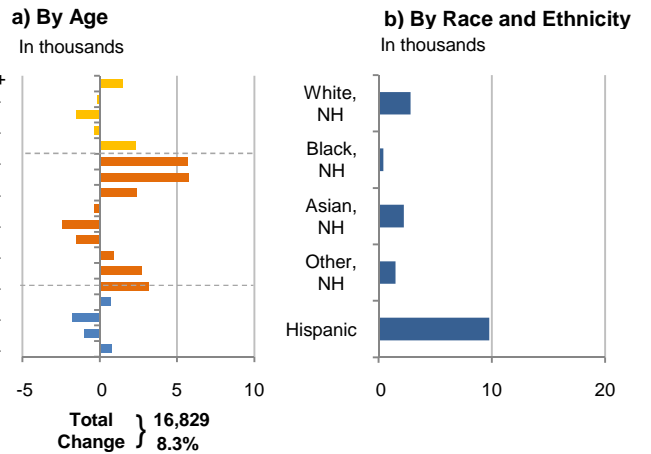
Source: US Census 2010, 2000, or 1990

6. Population by 5-Year Age Brackets

In thousands; males on left, females on right

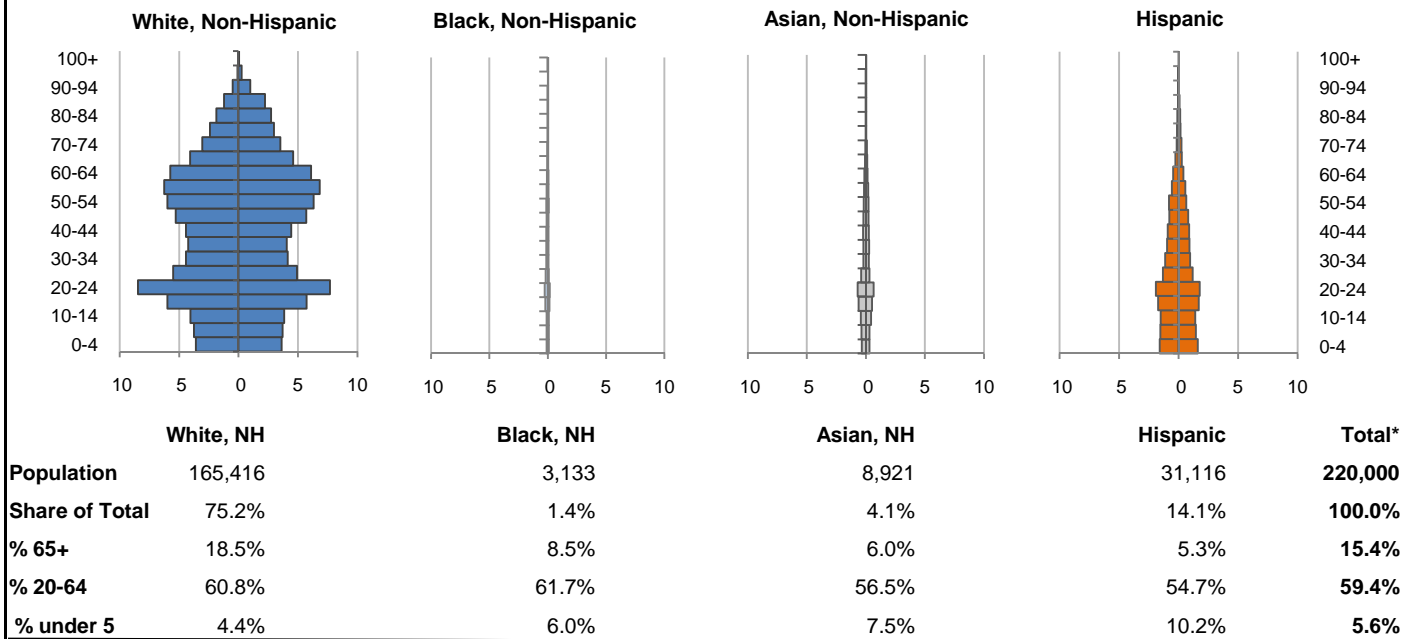


7. 10-Year Change in Population, 2000-10

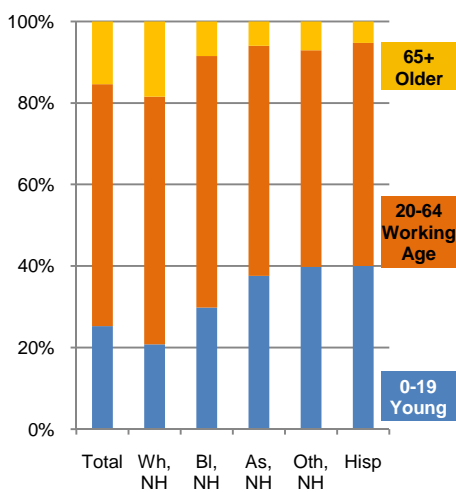


8. Population by Age, Race, and Ethnicity, 2010

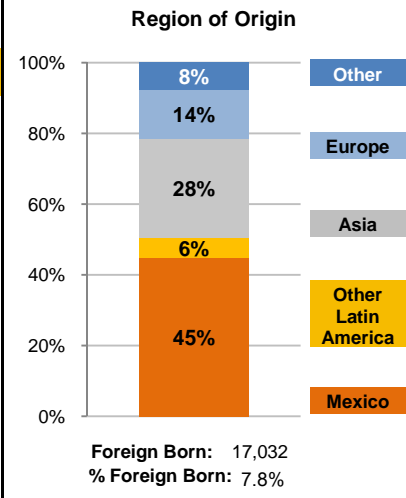
In thousands; males on left, females on right



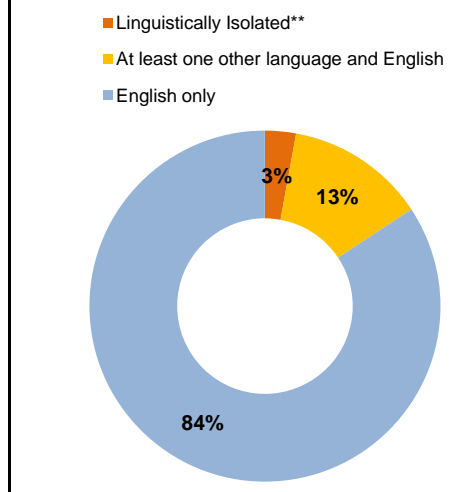
9. Age Mix by Race and Ethnicity, 2010



10. Foreign Born, 2005-09



11. Household Language, 2005-09



Wh=White; Bl=Black; As=Asian; Oth=Other Race or Two or More Races; Hisp=Hispanic; NH=Non-Hispanic; ACS=American Community Survey 2005-09

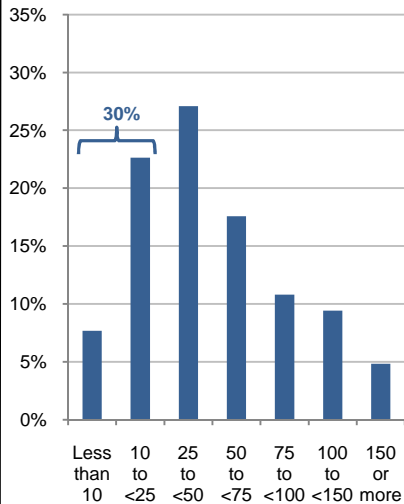
*See pages 5-6 for detail on Other, Non-Hispanic

**Linguistically Isolated = No one in the household age 14 and over speaks English at least "very well"

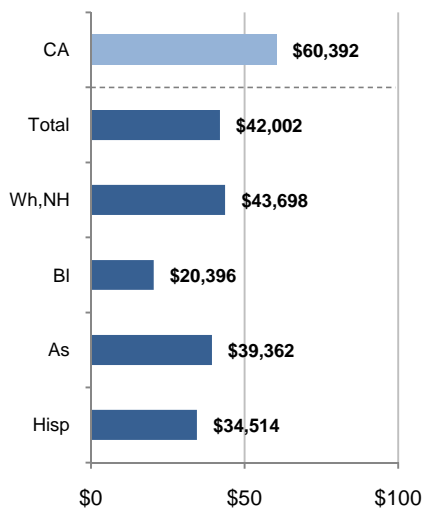
12. Household Income, 2005-09

In thousands of \$ (2009)

a) Income Distribution



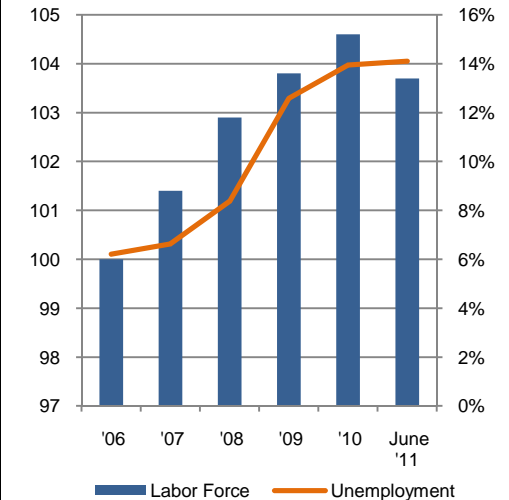
b) Median Household Income by Race and Ethnicity*



13. Labor Force and Unemployment, 2006-11

Labor Force In thousands

Unemployment Rate

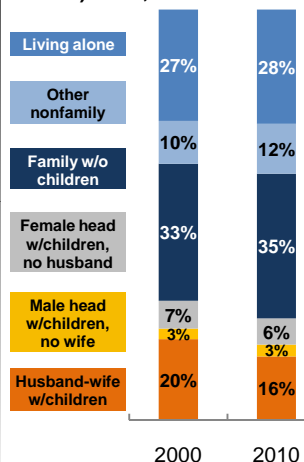


Source: CA Employment Development Department

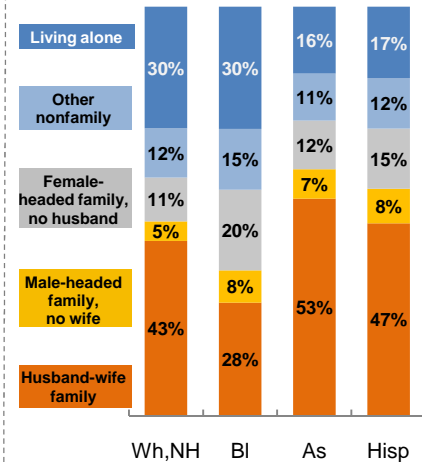
14. Household Type, 2010

% of all households

a) Total, 2000-10

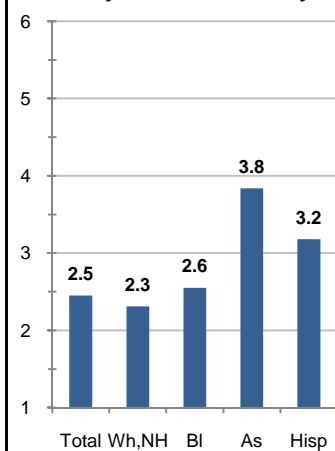


b) By Race and Ethnicity,* 2010

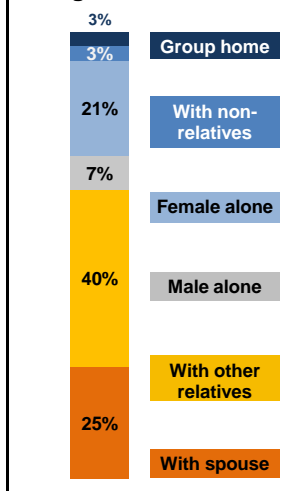


15. Average Household Size, 2010

By Race and Ethnicity*



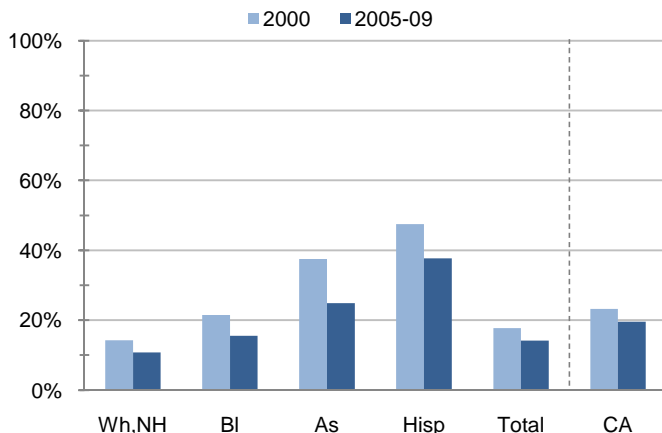
16. Living Arrangements Age 65+, 2005-09



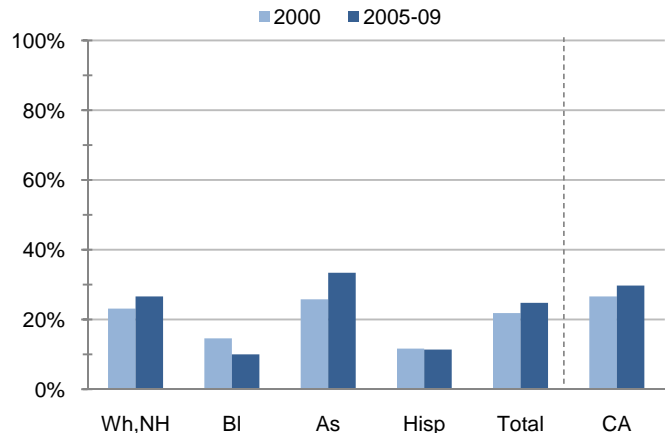
Source: ACS 2005-09

17. Educational Attainment for the Population Age 25 and Over by Race and Ethnicity*

a) % of Adults Who Did Not Complete High School



b) % of Adults Who Attained a BA or Higher



Source: Census 2000, ACS 2005-09

*Wh,NH=White,Non-Hispanic; BI=Black,Hispanic Inclusive; As=Asian,Hispanic Inclusive; Hisp=Hispanic(Includes all races); CA=California Total

Note: In the American Community Survey and for Census variables other than population, Hispanic origin is not broken out for all races.

	White, Non- Hispanic	Black, Non- Hispanic	Asian, Non- Hispanic	Other, Non- Hispanic	Detail for Other, Non-Hispanic				Hispanic or Latino	Total Population
					American Indian & Alaska Native	Native Hawaiian & Pacific Islander	Some Other Race	Two or More Races		
A. Total Population										
2000 Total	162,564	2,699	6,676	9,893	3,295	273	435	5,890	21,339	203,171
2000 % of Total	80.0%	1.3%	3.3%	4.9%	1.6%	0.1%	0.2%	2.9%	10.5%	100.0%
2010 Total	165,416	3,133	8,921	11,414	3,395	401	318	7,300	31,116	220,000
2010 % of Total	75.2%	1.4%	4.1%	5.2%	1.5%	0.2%	0.1%	3.3%	14.1%	100.0%
B. Population in Major Age Groups by Race and Ethnicity										
2000										
0-19	39,621	997	3,134	4,019	1,253	74	156	2,536	9,080	56,851
20-64	93,136	1,474	3,211	5,180	1,833	184	255	2,908	11,263	114,264
65+	29,807	228	331	694	209	15	24	446	996	32,056
85+	4,011	25	36	73	23	3	2	45	74	4,219
2010										
0-19	34,327	933	3,351	4,536	1,056	121	103	3,256	12,453	55,600
20-64	100,530	1,934	5,036	6,066	1,982	258	187	3,639	17,017	130,583
65+	30,559	266	534	812	357	22	28	405	1,646	33,817
85+	5,337	29	64	63	26	0	3	34	177	5,670
C. Age Mix for Each Racial and Ethnic Group										
2000										
0-19	24.4%	36.9%	46.9%	40.6%	38.0%	27.1%	35.9%	43.1%	42.6%	28.0%
20-64	57.3%	54.6%	48.1%	52.4%	55.6%	67.4%	58.6%	49.4%	52.8%	56.2%
65+	18.3%	8.4%	5.0%	7.0%	6.3%	5.5%	5.5%	7.6%	4.7%	15.8%
85+	2.5%	0.9%	0.5%	0.7%	0.7%	1.1%	0.5%	0.8%	0.3%	2.1%
2010										
0-19	20.8%	29.8%	37.6%	39.7%	31.1%	30.2%	32.4%	44.6%	40.0%	25.3%
20-64	60.8%	61.7%	56.5%	53.1%	58.4%	64.3%	58.8%	49.8%	54.7%	59.4%
65+	18.5%	8.5%	6.0%	7.1%	10.5%	5.5%	8.8%	5.5%	5.3%	15.4%
85+	3.2%	0.9%	0.7%	0.6%	0.8%	0.0%	0.9%	0.5%	0.6%	2.6%
D. Racial and Ethnic Mix for Each Age Group										
2000										
0-19	69.7%	1.8%	5.5%	7.1%	2.2%	0.1%	0.3%	4.5%	16.0%	100.0%
20-64	81.5%	1.3%	2.8%	4.5%	1.6%	0.2%	0.2%	2.5%	9.9%	100.0%
65+	93.0%	0.7%	1.0%	2.2%	0.7%	0.0%	0.1%	1.4%	3.1%	100.0%
85+	95.1%	0.6%	0.9%	1.7%	0.5%	0.1%	0.0%	1.1%	1.8%	100.0%
2010										
0-19	61.7%	1.7%	6.0%	8.2%	1.9%	0.2%	0.2%	5.9%	22.4%	100.0%
20-64	77.0%	1.5%	3.9%	4.6%	1.5%	0.2%	0.1%	2.8%	13.0%	100.0%
65+	90.4%	0.8%	1.6%	2.4%	1.1%	0.1%	0.1%	1.2%	4.9%	100.0%
85+	94.1%	0.5%	1.1%	1.1%	0.5%	0.0%	0.1%	0.6%	3.1%	100.0%
E. Population Growth										
2000-10, Change										
0-19	-5,294	-64	217	517	-197	47	-53	720	3,373	-1,251
20-64	7,394	460	1,825	886	149	74	-68	731	5,754	16,319
65+	752	38	203	118	148	7	4	-41	650	1,761
85+	1,326	4	28	-10	3	-3	1	-11	103	1,451
Total	2,852	434	2,245	1,521	100	128	-117	1,410	9,777	16,829
2000-10, % Change										
0-19	-13.4%	-6.4%	6.9%	12.9%	-15.7%	63.5%	-34.0%	28.4%	37.1%	-2.2%
20-64	7.9%	31.2%	56.8%	17.1%	8.1%	40.2%	-26.7%	25.1%	51.1%	14.3%
65+	2.5%	16.7%	61.3%	17.0%	70.8%	46.7%	16.7%	-9.2%	65.3%	5.5%
85+	33.1%	16.0%	77.8%	-13.7%	13.0%	-100.0%	50.0%	-24.4%	139.2%	34.4%
Total	1.8%	16.1%	33.6%	15.4%	3.0%	46.9%	-26.9%	23.9%	45.8%	8.3%

Source: US Census 2010, 2000

	White, Non- Hispanic	Black, Non- Hispanic	Asian, Non- Hispanic	Other, Non- Hispanic	Detail for Other, Non-Hispanic				Hispanic or Latino	Total Population 2010
					American Indian & Alaska Native	Native Hawaiian & Pacific Islander	Some Other Race	Two or More Races		
F. Population by Library-Defined Age Groups, 2010										
0-5	8,652	226	809	1,360	280	23	29	1,028	3,786	14,833
6-10	7,571	186	700	1,142	266	42	28	806	2,941	12,540
11-13	4,667	127	515	609	166	16	14	413	1,711	7,629
14-18	9,754	275	1,055	1,133	284	31	20	798	3,110	15,327
19-32	35,585	937	2,648	2,666	663	128	89	1,786	8,398	50,234
33-45	22,399	453	1,247	1,566	568	59	38	901	4,812	30,477
46-64	46,229	663	1,413	2,126	811	80	72	1,163	4,712	55,143
65-84	25,222	237	470	749	331	22	25	371	1,469	28,147
85+	5,337	29	64	63	26	0	3	34	177	5,670
Total	165,416	3,133	8,921	11,414	3,395	401	318	7,300	31,116	220,000
G. Population by 5-Year Age Brackets, 2010										
0-4	7,226	189	671	1,136	218	20	24	874	3,187	12,409
5-9	7,469	186	670	1,145	285	33	26	801	2,969	12,439
10-14	7,895	201	870	1,059	261	37	26	735	2,886	12,911
15-19	11,737	357	1,140	1,196	292	31	27	846	3,411	17,841
20-24	16,153	438	1,355	1,210	275	58	40	837	3,662	22,818
25-29	10,425	262	723	797	230	39	25	503	2,514	14,721
30-34	8,559	189	472	625	177	34	22	392	2,115	11,960
35-39	8,300	184	497	604	209	22	11	362	1,897	11,482
40-44	8,842	175	471	561	221	18	14	308	1,798	11,847
45-49	11,001	175	454	645	262	18	15	350	1,574	13,849
50-54	12,311	212	415	636	269	30	26	311	1,454	15,028
55-59	13,070	159	362	530	179	18	19	314	1,144	15,265
60-64	11,869	140	287	458	160	21	15	262	859	13,613
65-69	8,664	85	185	331	137	9	13	172	540	9,805
70-74	6,571	78	148	176	91	6	7	72	407	7,380
75-79	5,372	47	75	139	62	4	3	70	292	5,925
80-84	4,615	27	62	103	41	3	2	57	230	5,037
85-89	3,437	21	42	53	20	0	3	30	124	3,677
90-94	1,489	4	16	7	3	0	0	4	46	1,562
95-99	366	2	3	3	3	0	0	0	6	380
100+	45	2	3	0	0	0	0	0	1	51
Total	165,416	3,133	8,921	11,414	3,395	401	318	7,300	31,116	220,000
H. Median Age, 2000-10										
	White, Non- Hispanic	Black, Hispanic Inclusive	Asian, Hispanic Inclusive		American Indian & Alaska Native, Hispanic Inclusive	Native Hawaiian & Pacific Islander, Hispanic Inclusive	Some Other Race, Hispanic Inclusive	Two or More Races, Hispanic Inclusive	Hispanic or Latino	Total Population
2000	39.6	25.1	21.0		26.6	26.6	23.7	21.6	22.9	35.8
2010	42.8	27.5	24.0		30.3	28.2	25.4	20.6	24.0	37.2

Source: US Census 2010, 2000

Note: In the American Community Survey and for Census variables other than population, Hispanic origin is not broken out for all races.

I. Income Distribution, 2005-09			J. Median Household Income by Race and Ethnicity, 2005-09 (\$2009)						
Range (ths)	Households	% of Total	White, NH	Black	Asian	Hispanic	Total	% of CA	California
<\$10	6,539	7.7%	\$43,698	\$20,396	\$39,362	\$34,514	\$42,002	69.5%	\$60,392
\$10 to <\$25	19,285	22.6%							
\$25 to <\$50	23,070	27.1%							
\$50 to <\$75	14,964	17.6%							
\$75 to <\$100	9,208	10.8%							
\$100 to <\$150	8,032	9.4%							
\$150+	4,109	4.8%							
K. Household Type, 2000-10			2000	2000,%	2010	2010,%			
Total households			79,674	100.0%	87,618	100.0%			
Family Households			49,740	62.4%	52,529	60.0%			
Husband-wife w/children			15,695	19.7%	13,607	15.5%			
Female head, no husband, w/children			5,404	6.8%	5,581	6.4%			
Male head, no wife, w/children			2,077	2.6%	2,479	2.8%			
Without children			26,564	33.3%	30,862	35.2%			
Nonfamily households			29,934	37.6%	35,089	40.0%			
Living alone			21,626	27.1%	24,420	27.9%			
Other nonfamily			8,308	10.4%	10,669	12.2%	Source: US Census 2010, 2000		
L. Household Type by Race and Ethnicity, 2010			White, NH	Black	Asian	Hispanic	Total		
Total households			71,830	1,219	2,254	8,709	87,618		
Husband-wife family			42.8%	27.7%	53.1%	47.1%	42.9%		
Family with male head, no wife			4.8%	7.9%	7.2%	8.4%	5.4%		
Family with female head, no husband			10.7%	19.7%	11.9%	14.7%	11.6%		
Living alone			29.7%	29.9%	16.3%	17.4%	27.9%	Source: US	
Other nonfamily			12.1%	14.8%	11.5%	12.3%	12.2%	Census 2010	
M. Poverty, 2005-09									
Percentage of families and people whose income in the past 12 months is below the poverty level								California	
All families						11.5%	9.8%		
Families w/ related children under 18 years						19.3%	14.5%		
Families w/ female householder, no husband present						32.8%	24.2%		
Families w/ female householder, no husband present w/ related children under 18 years						42.0%	32.2%		
All people						18.3%	13.2%		
Under 18 years						21.3%	18.3%		
18 to 64 years						20.3%	11.9%		
65 years and over						5.7%	8.4%		
N. Educational Attainment, 2005-09									
			% at each level of educational attainment						
			White, NH	Black	Asian	Hispanic	Total		
Population 25 years and over			107,936	1,794	4,108	12,561	131,246		
Less than high school			10.8%	15.5%	24.9%	37.7%	14.1%		
High school graduate (includes equivalency)			24.3%	36.5%	16.6%	23.8%	24.1%		
Some college or associate's degree			38.3%	38.1%	25.1%	27.1%	36.9%		
Bachelor's degree or higher			26.6%	10.0%	33.4%	11.4%	24.8%		
O. Employment Status, 2010-11									
			2010	June 2011					
In civilian labor force			104,600	103,700					
Employed			90,000	89,100					
Unemployed, % of labor force			13.9%	14.1%	Source: CA Employment Development Department				
P. Occupation, 2005-09									
					Estimate	Percent			
Civilian employed population, 16 yrs & over					91,587	100.0%			
Management, professional, and related occupations					29,611	32.3%			
Service occupations					18,981	20.7%			
Sales and office occupations					23,593	25.8%			
Farming, fishing, and forestry occupations					1,467	1.6%			
Construction, extraction, maintenance, and repair occupations					8,992	9.8%			
Production, transportation, and material moving occupations					8,943	9.8%			
Q. Class of Worker, 2005-09									
					Estimate	Percent			
Civilian employed population, 16 yrs & over					91,587	100.0%			
Private, for profit, wage and salary employee					54,351	59.3%			
Private, not for profit, wage and salary employee					7,057	7.7%			
Private, for profit, wage and salary self-employed in own business					2,477	2.7%			
Government workers					17,222	18.8%			
Self-employed in own not incorporated business					10,284	11.2%			
Unpaid family workers in family business					196	0.2%			

Source: American Community Survey 2005-09, unless otherwise stated

ProfileTemplate 9-8-11.xlsr 9/11/2011 14:15

Note: In the American Community Survey and for US Census variables other than population, Hispanic origin is not broken out for all races. White, NH represents White, Non-Hispanic. Black and Asian are Hispanic inclusive.