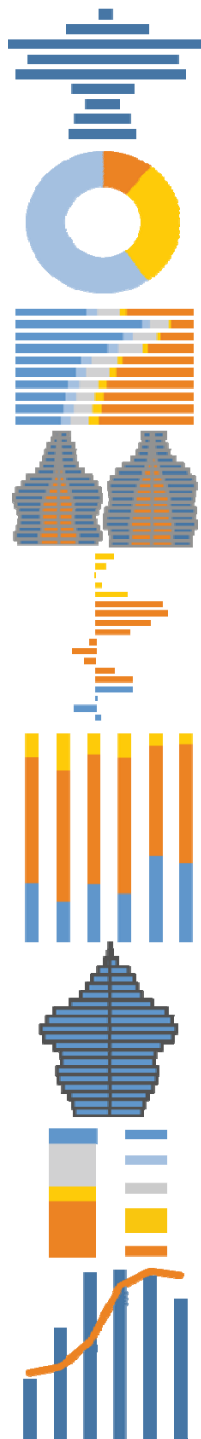


Highlights



**Population Growth:** The population of Colusa County grew by 14% over the past decade to 21,000 people. The greatest growth occurred in the Hispanic population, which increased by 3,000 people (35%).

**Diversity:** Colusa County became majority Hispanic over the past decade, with the Hispanic share of the population increasing from 47% to 55%. The white, non-Hispanic share decreased from 48% to 40%.

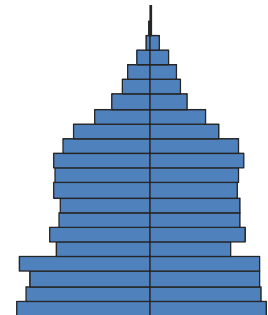
**Age structure:** Colusa County remains slightly younger than California overall with a median age of 34, compared with 35 statewide. Although the young share of the population declined from 35% to 33% of total over the past decade, it is still higher than the 28% share statewide. The share of the population age 65+ increased slightly to 12%, just above the statewide 11%.

**Households:** Husband-wife families with children are more common in Colusa—29% of households compared with 23% statewide.

**Education:** Educational attainment is much lower in this jurisdiction than in California overall. Just 13% of adults in Colusa have earned a Bachelor’s degree or higher, compared with 30% of adults statewide, and 32% have not completed high school, compared with 20% statewide.

**Income:** Incomes are relatively low in this jurisdiction, with median household income of \$47,000, just 78% of the state median. The unemployment rate, 19% in June 2011, is much higher than in California overall.

**Foreign Born:** Colusa has a large foreign-born population making up 26% of the total, just below the 27% statewide share. Most of the immigrants here, 91%, came from Mexico, compared with 44% statewide. Also, 16% of households in Colusa are linguistically isolated, meaning that no one in these households age 14 and over speaks English at least “very well,” compared with 10% of households statewide.



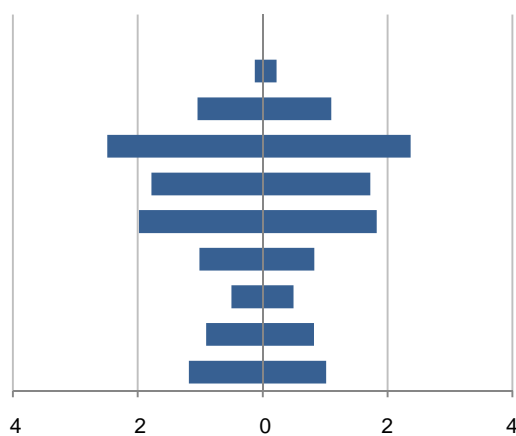
Population by Age

*This demographic profile is part of a series of library jurisdiction profiles prepared for the California State Library by the Stanford Center on Longevity. The project, "Understanding California's Shifting Demographics," was supported in whole by the U.S. Institute of Museum and Library Services under the provisions of the Library Services and Technology Act, administered in California by the State Librarian. The opinions expressed herein do not necessarily reflect the position or policy of the U.S. Institute of Museum and Library Services or the California State Library, and no official endorsement by the U.S. Institute of Museum and Library Services or the California State Library should be inferred.*

Key Indicators			
		2000	2010
<b>Population Growth</b>			
	Total population	18,804	21,419
	10-year growth	15.5%	13.9%
<b>Diversity</b>			
	% Hispanic	46.5%	55.1%
	% Asian, non-Hispanic	1.2%	1.2%
	% White, non-Hispanic	48.0%	39.8%
	% Black, non-Hispanic	0.5%	0.8%
<b>Aging</b>			
	% 65+	11.4%	11.6%
	Median age	31.5	33.5
<b>Households</b>			
	% Married couple with children	31.9%	28.9%
	% Living alone	21.7%	20.9%

1. Population by Library-Defined Age Group, 2010

In thousands; males on left, females on right

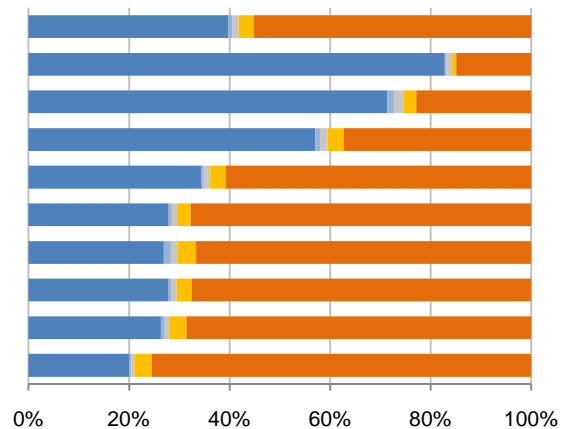


2. Race and Ethnicity by Library-Defined Age Group, 2010

White, NH Black, NH Asian, NH Other, NH Hispanic

Age group

- Total
- 85+, Oldest
- 65 to 84, Older adults
- 46 to 64, Midlife
- 33 to 45, Adult
- 19 to 32, Young
- 14 to 18, Teens
- 11 to 13, Tweens
- 6 to 10, School age
- 0 to 5, Infants/toddlers

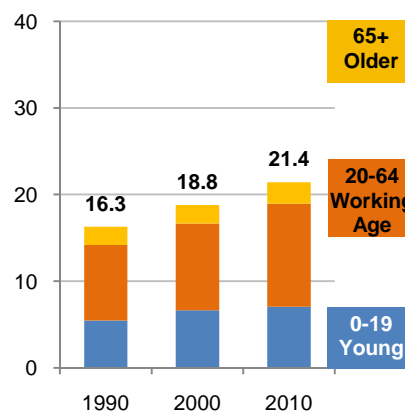


3. Population Growth by Library-Defined Age Group, 2000-10

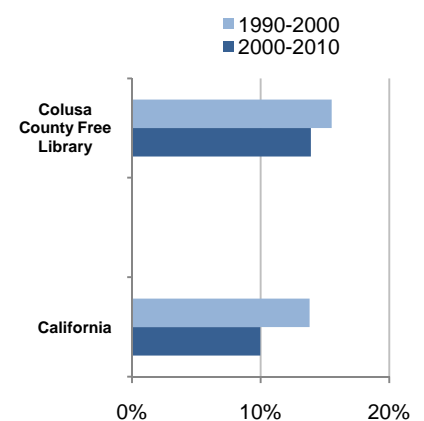
	2010	Change	% Change
<b>Total</b>	21,419	2,615	13.9%
<b>85+</b>	349	96	37.9%
<b>65 to 84</b>	2,146	264	14.0%
<b>46 to 64</b>	4,858	1,426	41.6%
<b>33 to 45</b>	3,503	22	0.6%
<b>19 to 32</b>	3,805	331	9.5%
<b>14 to 18</b>	1,839	44	2.5%
<b>11 to 13</b>	995	-1	-0.1%
<b>6 to 10</b>	1,726	86	5.2%
<b>0 to 5</b>	2,198	347	18.7%

4. Population Total, 1990-2010

In thousands



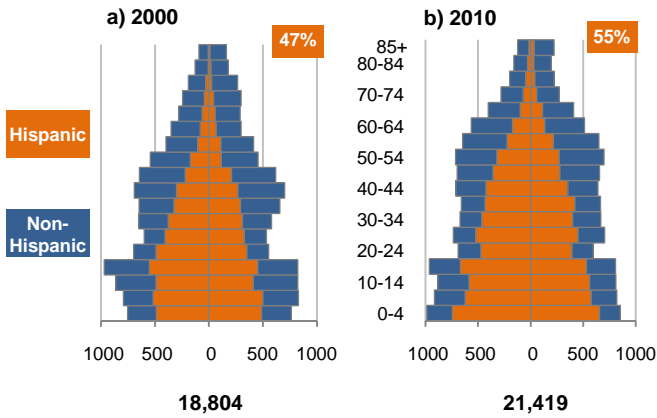
5. 10-Year Population Change



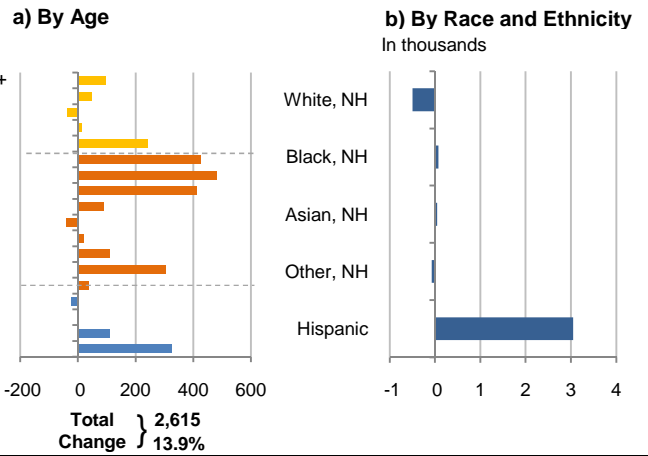
Source: US Census 2010, 2000, or 1990

6. Population by 5-Year Age Brackets

Males on left, females on right

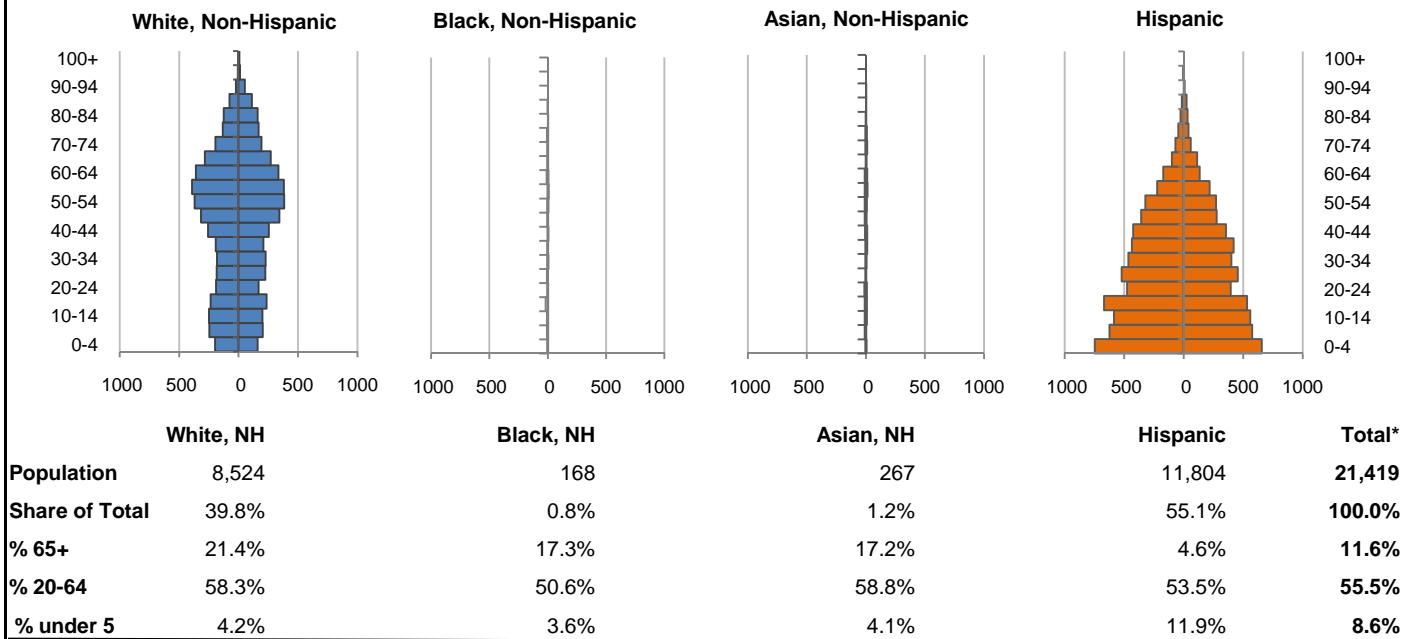


7. 10-Year Change in Population, 2000-10

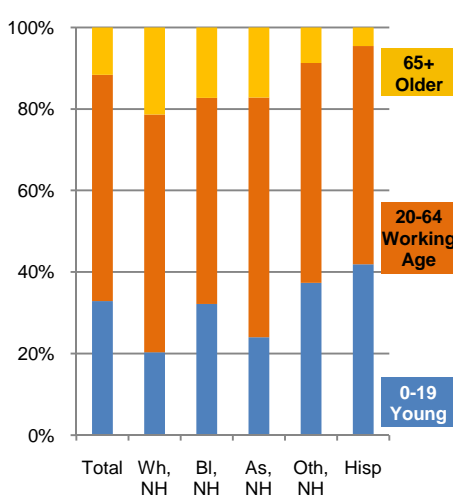


8. Population by Age, Race, and Ethnicity, 2010

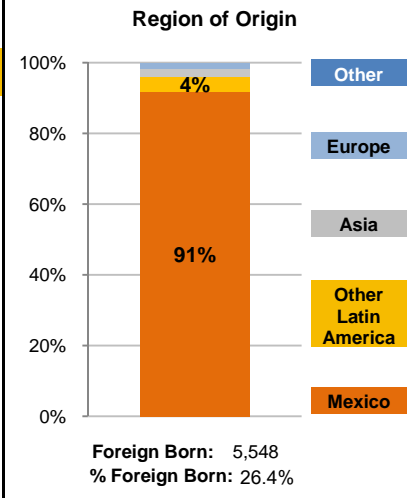
Males on left, females on right



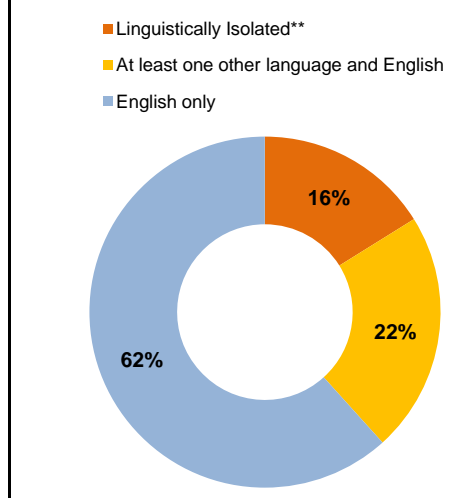
9. Age Mix by Race and Ethnicity, 2010



10. Foreign Born, 2005-09



11. Household Language, 2005-09



Wh=White; BI=Black; As=Asian; Oth=Other Race or Two or More Races; Hisp=Hispanic; NH=Non-Hispanic; ACS=American Community Survey 2005-09

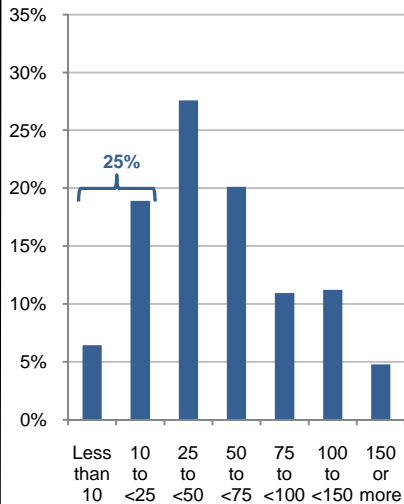
\*See pages 5-6 for detail on Other, Non-Hispanic

\*\*Linguistically Isolated = No one in the household age 14 and over speaks English at least "very well"

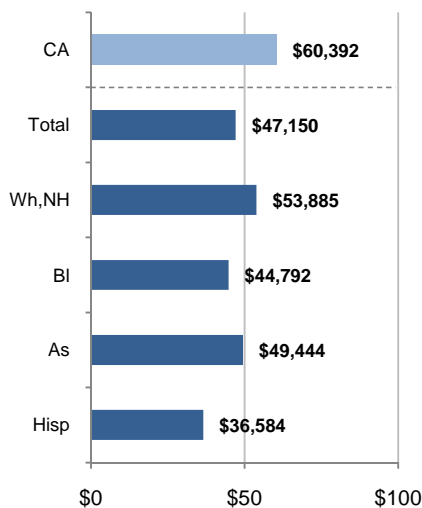
12. Household Income, 2005-09

In thousands of \$ (2009)

a) Income Distribution



b) Median Household Income by Race and Ethnicity\*

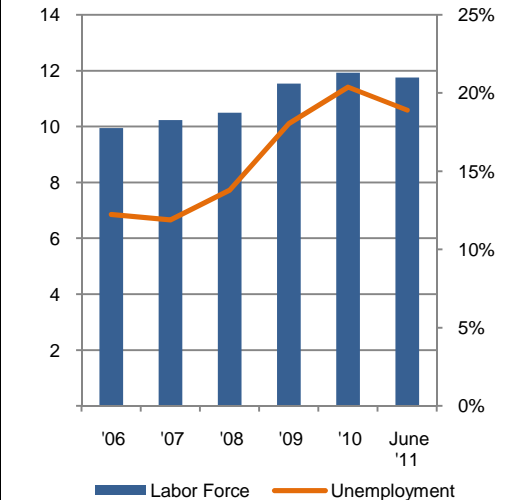


Source: ACS 2005-09

13. Labor Force and Unemployment, 2006-11

Labor Force In thousands

Unemployment Rate

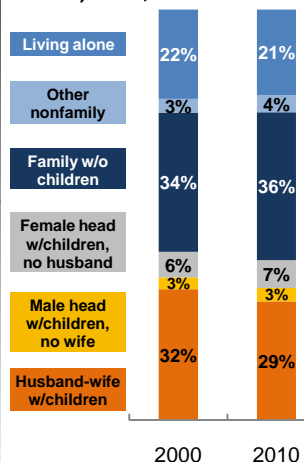


Source: CA Employment Development Department

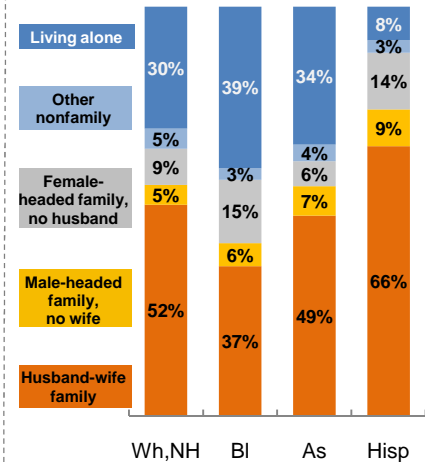
14. Household Type, 2010

% of all households

a) Total, 2000-10

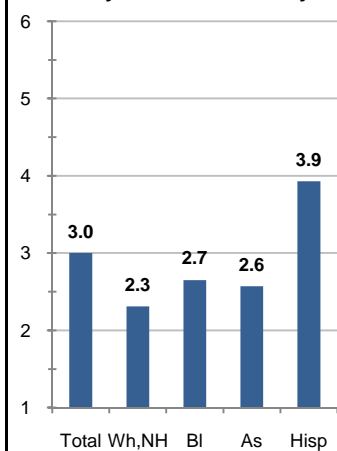


b) By Race and Ethnicity,\* 2010

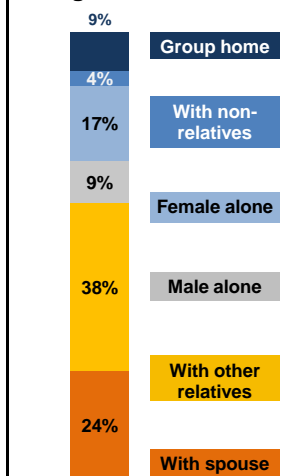


15. Average Household Size, 2010

By Race and Ethnicity\*



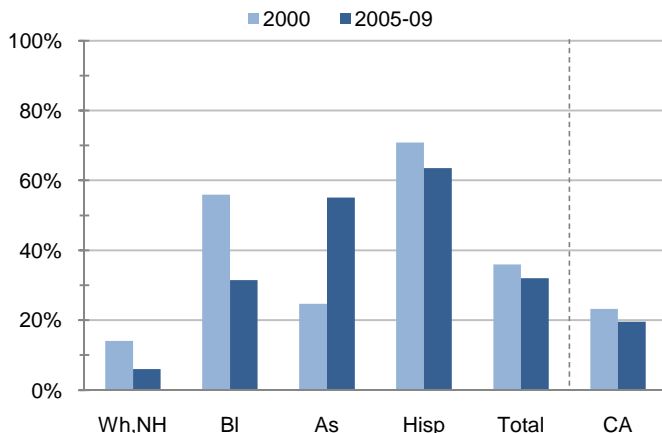
16. Living Arrangements Age 65+, 2005-09



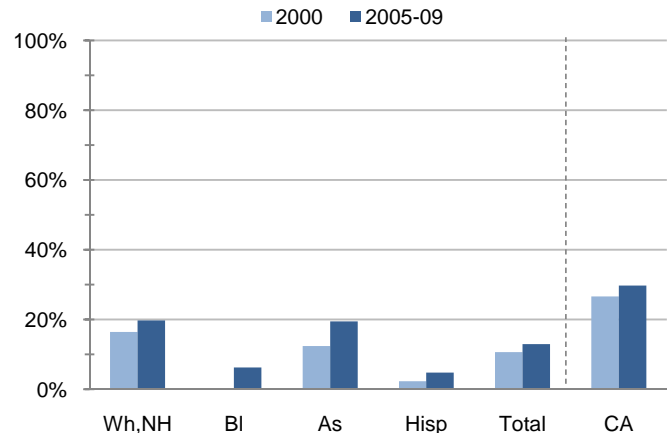
Source: ACS 2005-09

17. Educational Attainment for the Population Age 25 and Over by Race and Ethnicity\*

a) % of Adults Who Did Not Complete High School



b) % of Adults Who Attained a BA or Higher



Source: Census 2000, ACS 2005-09

\*Wh,NH=White,Non-Hispanic; BI=Black,Hispanic Inclusive; As=Asian,Hispanic Inclusive; Hisp=Hispanic(Includes all races); CA=California Total

Note: In the American Community Survey and for Census variables other than population, Hispanic origin is not broken out for all races.

	White, Non- Hispanic	Black, Non- Hispanic	Asian, Non- Hispanic	Other, Non- Hispanic	Detail for Other, Non-Hispanic				Hispanic or Latino	Total Population
					American Indian & Alaska Native	Native Hawaiian & Pacific Islander	Some Other Race	Two or More Races		
<b>A. Total Population</b>										
<b>2000 Total</b>	9,018	88	220	726	316	67	34	309	8,752	18,804
<b>2000 % of Total</b>	48.0%	0.5%	1.2%	3.9%	1.7%	0.4%	0.2%	1.6%	46.5%	100.0%
<b>2010 Total</b>	8,524	168	267	656	296	59	29	272	11,804	21,419
<b>2010 % of Total</b>	39.8%	0.8%	1.2%	3.1%	1.4%	0.3%	0.1%	1.3%	55.1%	100.0%
<b>B. Population in Major Age Groups by Race and Ethnicity</b>										
<b>2000</b>										
0-19	2,352	38	61	268	118	20	8	122	3,903	6,622
20-64	4,962	34	116	396	176	45	19	156	4,539	10,047
65+	1,704	16	43	62	22	2	7	31	310	2,135
85+	224	4	3	3	1	0	0	2	19	253
<b>2010</b>										
0-19	1,730	54	64	245	109	11	7	118	4,946	7,039
20-64	4,973	85	157	354	154	43	22	135	6,316	11,885
65+	1,821	29	46	57	33	5	0	19	542	2,495
85+	289	1	4	3	1	0	0	2	52	349
<b>C. Age Mix for Each Racial and Ethnic Group</b>										
<b>2000</b>										
0-19	26.1%	43.2%	27.7%	36.9%	37.3%	29.9%	23.5%	39.5%	44.6%	35.2%
20-64	55.0%	38.6%	52.7%	54.5%	55.7%	67.2%	55.9%	50.5%	51.9%	53.4%
65+	18.9%	18.2%	19.5%	8.5%	7.0%	3.0%	20.6%	10.0%	3.5%	11.4%
85+	2.5%	4.5%	1.4%	0.4%	0.3%	0.0%	0.0%	0.6%	0.2%	1.3%
<b>2010</b>										
0-19	20.3%	32.1%	24.0%	37.3%	36.8%	18.6%	24.1%	43.4%	41.9%	32.9%
20-64	58.3%	50.6%	58.8%	54.0%	52.0%	72.9%	75.9%	49.6%	53.5%	55.5%
65+	21.4%	17.3%	17.2%	8.7%	11.1%	8.5%	0.0%	7.0%	4.6%	11.6%
85+	3.4%	0.6%	1.5%	0.5%	0.3%	0.0%	0.0%	0.7%	0.4%	1.6%
<b>D. Racial and Ethnic Mix for Each Age Group</b>										
<b>2000</b>										
0-19	35.5%	0.6%	0.9%	4.0%	1.8%	0.3%	0.1%	1.8%	58.9%	100.0%
20-64	49.4%	0.3%	1.2%	3.9%	1.8%	0.4%	0.2%	1.6%	45.2%	100.0%
65+	79.8%	0.7%	2.0%	2.9%	1.0%	0.1%	0.3%	1.5%	14.5%	100.0%
85+	88.5%	1.6%	1.2%	1.2%	0.4%	0.0%	0.0%	0.8%	7.5%	100.0%
<b>2010</b>										
0-19	24.6%	0.8%	0.9%	3.5%	1.5%	0.2%	0.1%	1.7%	70.3%	100.0%
20-64	41.8%	0.7%	1.3%	3.0%	1.3%	0.4%	0.2%	1.1%	53.1%	100.0%
65+	73.0%	1.2%	1.8%	2.3%	1.3%	0.2%	0.0%	0.8%	21.7%	100.0%
85+	82.8%	0.3%	1.1%	0.9%	0.3%	0.0%	0.0%	0.6%	14.9%	100.0%
<b>E. Population Growth</b>										
<b>2000-10, Change</b>										
0-19	-622	16	3	-23	-9	-9	-1	-4	1,043	417
20-64	11	51	41	-42	-22	-2	3	-21	1,777	1,838
65+	117	13	3	-5	11	3	-7	-12	232	360
85+	65	-3	1	0	0	0	0	0	33	96
<b>Total</b>	<b>-494</b>	<b>80</b>	<b>47</b>	<b>-70</b>	<b>-20</b>	<b>-8</b>	<b>-5</b>	<b>-37</b>	<b>3,052</b>	<b>2,615</b>
<b>2000-10, % Change</b>										
0-19	-26.4%	42.1%	4.9%	-8.6%	-7.6%	-45.0%	-12.5%	-3.3%	26.7%	6.3%
20-64	0.2%	150.0%	35.3%	-10.6%	-12.5%	-4.4%	15.8%	-13.5%	39.1%	18.3%
65+	6.9%	81.3%	7.0%	-8.1%	50.0%	150.0%	-100.0%	-38.7%	74.8%	16.9%
85+	29.0%	-75.0%	33.3%	0.0%	0.0%	N/A	N/A	0.0%	173.7%	37.9%
<b>Total</b>	<b>-5.5%</b>	<b>90.9%</b>	<b>21.4%</b>	<b>-9.6%</b>	<b>-6.3%</b>	<b>-11.9%</b>	<b>-14.7%</b>	<b>-12.0%</b>	<b>34.9%</b>	<b>13.9%</b>

Source: US Census 2010, 2000

	White, Non- Hispanic	Black, Non- Hispanic	Asian, Non- Hispanic	Other, Non- Hispanic	Detail for Other, Non-Hispanic				Hispanic or Latino	Total Population 2010
					American Indian & Alaska Native	Native Hawaiian & Pacific Islander	Some Other Race	Two or More Races		
<b>F. Population by Library-Defined Age Groups, 2010</b>										
0-5	440	8	15	76	40	2	4	30	1,659	2,198
6-10	454	14	14	60	26	1	2	31	1,184	1,726
11-13	277	6	10	30	16	0	0	14	672	995
14-18	495	26	24	68	27	5	0	36	1,226	1,839
19-32	1,060	25	38	104	39	12	8	45	2,578	3,805
33-45	1,206	16	44	106	50	13	8	35	2,131	3,503
46-64	2,771	44	76	155	65	21	7	62	1,812	4,858
65-84	1,532	28	42	54	32	5	0	17	490	2,146
85+	289	1	4	3	1	0	0	2	52	349
Total	8,524	168	267	656	296	59	29	272	11,804	21,419
<b>G. Population by 5-Year Age Brackets, 2010</b>										
0-4	358	6	11	64	33	2	4	25	1,402	1,841
5-9	450	13	14	58	29	0	2	27	1,198	1,733
10-14	450	12	19	66	33	1	0	32	1,145	1,692
15-19	472	23	20	57	14	8	1	34	1,201	1,773
20-24	358	6	21	32	9	6	1	16	870	1,287
25-29	411	7	9	39	19	1	4	15	974	1,440
30-34	409	13	12	41	19	4	5	13	865	1,340
35-39	402	5	18	46	23	6	4	13	854	1,325
40-44	510	9	19	36	18	4	1	13	779	1,353
45-49	661	8	17	35	20	4	1	10	635	1,356
50-54	752	9	17	41	15	4	3	19	592	1,411
55-59	774	11	23	47	19	7	1	20	441	1,296
60-64	696	17	21	37	12	7	2	16	306	1,077
65-69	554	9	8	29	14	4	0	11	212	812
70-74	390	6	17	11	9	1	0	1	131	555
75-79	302	11	14	8	4	0	0	4	87	422
80-84	286	2	3	6	5	0	0	1	60	357
85-89	188	1	3	1	0	0	0	1	38	231
90-94	76	0	1	2	1	0	0	1	9	88
95-99	19	0	0	0	0	0	0	0	5	24
100+	6	0	0	0	0	0	0	0	0	6
Total	8,524	168	267	656	296	59	29	272	11,804	21,419
<b>H. Median Age, 2000-10</b>										
	White, Non- Hispanic	Black, Hispanic Inclusive	Asian, Hispanic Inclusive		American Indian & Alaska Native, Hispanic Inclusive	Native Hawaiian & Pacific Islander, Hispanic Inclusive	Some Other Race, Hispanic Inclusive	Two or More Races, Hispanic Inclusive	Hispanic or Latino	Total Population
<b>2000</b>	42.5	21.5	41.6		24.8	36.0	23.4	23.3	22.8	31.5
<b>2010</b>	48.6	32.4	42.3		28.5	40.5	25.7	20.4	25.5	33.5

Source: US Census 2010, 2000

Note: In the American Community Survey and for Census variables other than population, Hispanic origin is not broken out for all races.

I. Income Distribution, 2005-09			J. Median Household Income by Race and Ethnicity, 2005-09 (\$2009)						
Range (ths)	Households	% of Total	White, NH	Black	Asian	Hispanic	Total	% of CA	California
<\$10	431	6.4%	\$53,885	\$44,792	\$49,444	\$36,584	\$47,150	78.1%	\$60,392
\$10 to <\$25	1,264	18.9%							
\$25 to <\$50	1,846	27.6%							
\$50 to <\$75	1,346	20.1%							
\$75 to <\$100	732	10.9%							
\$100 to <\$150	751	11.2%							
\$150+	320	4.8%							
K. Household Type, 2000-10			2000	2000,%	2010	2010,%			
<b>Total households</b>			6,081	100.0%	7,056	100.0%			
Family Households			4,554	74.9%	5,286	74.9%			
Husband-wife w/children			1,939	31.9%	2,039	28.9%			
Female head, no husband, w/children			375	6.2%	476	6.7%			
Male head, no wife, w/children			176	2.9%	231	3.3%			
Without children			2,064	33.9%	2,540	36.0%			
Nonfamily households			1,527	25.1%	1,770	25.1%			
Living alone			1,322	21.7%	1,475	20.9%			
Other nonfamily			205	3.4%	295	4.2%	Source: US Census 2010, 2000		
L. Household Type by Race and Ethnicity, 2010			White, NH	Black	Asian	Hispanic	Total		
<b>Total households</b>			3,754	71	98	2,928	7,056		
Husband-wife family			51.7%	36.6%	49.0%	65.9%	57.2%		
Family with male head, no wife			4.8%	5.6%	7.1%	9.0%	6.6%		
Family with female head, no husband			8.8%	15.5%	6.1%	13.9%	11.2%		
Living alone			29.8%	39.4%	33.7%	8.2%	20.9%	Source: US	
Other nonfamily			4.9%	2.8%	4.1%	3.0%	4.2%	Census 2010	
M. Poverty, 2005-09							California		
<i>Percentage of families and people whose income in the past 12 months is below the poverty level</i>									
All families							12.2%	9.8%	
Families w/ related children under 18 years							20.7%	14.5%	
Families w/ female householder, no husband present							39.8%	24.2%	
Families w/ female householder, no husband present w/ related children under 18 years							45.8%	32.2%	
All people							15.7%	13.2%	
Under 18 years							25.5%	18.3%	
18 to 64 years							12.4%	11.9%	
65 years and over							7.6%	8.4%	
N. Educational Attainment, 2005-09			% at each level of educational attainment						
			White, NH	Black	Asian	Hispanic	Total		
<b>Population 25 years and over</b>			6,478	175	185	5,276	12,570		
Less than high school			6.0%	31.4%	55.1%	63.5%	32.0%		
High school graduate (includes equivalency)			30.9%	12.6%	16.8%	17.3%	24.8%		
Some college or associate's degree			43.3%	49.7%	8.6%	14.4%	30.2%		
Bachelor's degree or higher			19.7%	6.3%	19.5%	4.8%	12.9%		
O. Employment Status, 2010-11			2010	June 2011					
In civilian labor force			11,930	11,760					
Employed			9,500	9,540					
Unemployed, % of labor force			20.4%	18.9%	Source: CA Employment Development Department				
P. Occupation, 2005-09			Estimate		Percent				
<b>Civilian employed population, 16 yrs &amp; over</b>			8,421		100.0%				
Management, professional, and related occupations			2,047		24.3%				
Service occupations			1,650		19.6%				
Sales and office occupations			1,522		18.1%				
Farming, fishing, and forestry occupations			1,235		14.7%				
Construction, extraction, maintenance, and repair occupations			669		7.9%				
Production, transportation, and material moving occupations			1,298		15.4%				
Q. Class of Worker, 2005-09			Estimate		Percent				
<b>Civilian employed population, 16 yrs &amp; over</b>			8,421		100.0%				
Private, for profit, wage and salary employee			5,743		68.2%				
Private, not for profit, wage and salary employee			262		3.1%				
Private, for profit, wage and salary self-employed in own business			226		2.7%				
Government workers			1,334		15.8%				
Self-employed in own not incorporated business			856		10.2%				
Unpaid family workers in family business			0		0.0%				

Source: American Community Survey 2005-09, unless otherwise stated

ProfileTemplate 9-8-11.xlsr 9/11/2011 14:26

Note: In the American Community Survey and for US Census variables other than population, Hispanic origin is not broken out for all races. White, NH represents White, Non-Hispanic. Black and Asian are Hispanic inclusive.