

Highlights



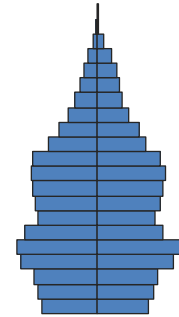
**Population Growth:** The total population in Fullerton increased by 7% to 135,000, slightly lower than the statewide growth rate of 10%. The greatest increases occurred among Asians (10,000) and Hispanics (8,000). Despite the overall growth, the white, non-Hispanic population declined by 10,000.

**Diversity:** The population mix has shifted over the last decade, with the Hispanic share of population increasing from 30% to 34%, the Asian share increasing from 16% to 23%, and the white, non-Hispanic share of population decreasing from 49% to 38% of total.

**Age Structure:** The age structure mirrors that of the state, with median age increasing from 33 to 35 over the last ten years. Young people make up 27% of the total population, compared with 28% statewide, and people age 65+ account for 12%, compared with 11% in California.

**Education:** Educational attainment for Fullerton is higher than for the state overall. Fifteen percent of adults have not completed high school, compared with 20% of adults statewide, and 38% have earned a Bachelor’s degree or higher, compared with 30% in California overall.

**Foreign Born:** Fullerton has a large foreign-born population making up 30% of the total—40,000 people. Many of these individuals are from Asia (49%), though Mexico is a common region of origin as well (37%). Also, 11% of households are linguistically isolated, meaning that no one in these households age 14 and over speaks English at least “very well.”



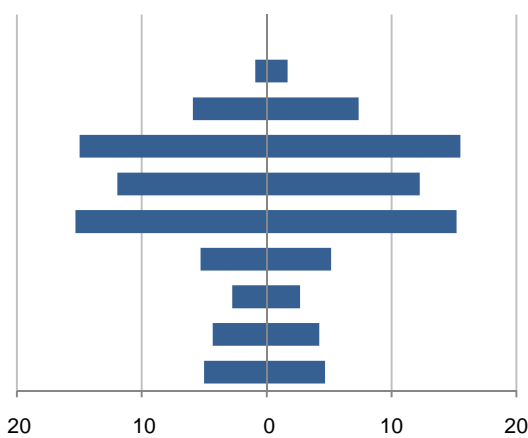
Population by Age

*This demographic profile is part of a series of library jurisdiction profiles prepared for the California State Library by the Stanford Center on Longevity. The project, "Understanding California's Shifting Demographics," was supported in whole by the U.S. Institute of Museum and Library Services under the provisions of the Library Services and Technology Act, administered in California by the State Librarian. The opinions expressed herein do not necessarily reflect the position or policy of the U.S. Institute of Museum and Library Services or the California State Library, and no official endorsement by the U.S. Institute of Museum and Library Services or the California State Library should be inferred.*

Key Indicators			
		2000	2010
<b>Population Growth</b>			
	Total population	126,003	135,161
	10-year growth	10.4%	7.3%
<b>Diversity</b>			
	% Hispanic	30.2%	34.4%
	% Asian, non-Hispanic	16.0%	22.6%
	% White, non-Hispanic	48.7%	38.2%
	% Black, non-Hispanic	2.1%	2.1%
<b>Aging</b>			
	% 65+	11.3%	11.7%
	Median age	32.9	34.8
<b>Households</b>			
	% Married couple with children	26.1%	24.1%
	% Living alone	23.4%	21.5%

**1. Population by Library-Defined Age Group, 2010**

In thousands; males on left, females on right

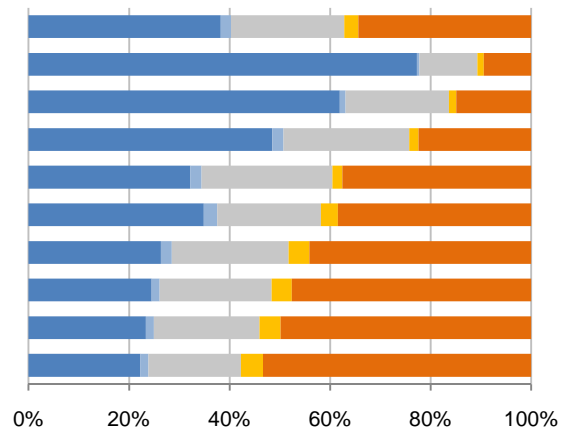


**2. Race and Ethnicity by Library-Defined Age Group, 2010**

White,NH Black,NH Asian,NH Other,NH Hispanic

**Age group**

Total  
85+, Oldest  
65 to 84, Older adults  
46 to 64, Midlife  
33 to 45, Adult  
19 to 32, Young  
14 to 18, Teens  
11 to 13, Tweens  
6 to 10, School age  
0 to 5, Infants/toddlers

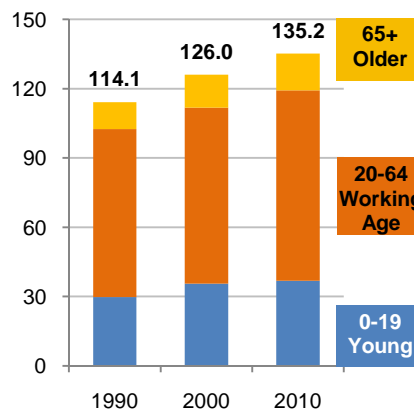


**3. Population Growth by Library-Defined Age Group, 2000-10**

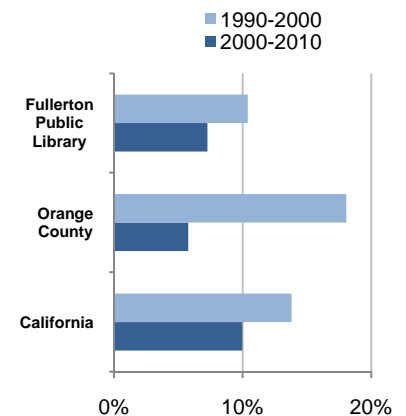
	2010	Change	% Change
<b>Total</b>	135,161	9,158	7.3%
<b>85+</b>	2,584	845	48.6%
<b>65 to 84</b>	13,268	733	5.8%
<b>46 to 64</b>	30,484	7,371	31.9%
<b>33 to 45</b>	24,209	-1,216	-4.8%
<b>19 to 32</b>	30,505	832	2.8%
<b>14 to 18</b>	10,467	1,920	22.5%
<b>11 to 13</b>	5,437	455	9.1%
<b>6 to 10</b>	8,521	-793	-8.5%
<b>0 to 5</b>	9,686	-989	-9.3%

**4. Population Total, 1990-2010**

In thousands



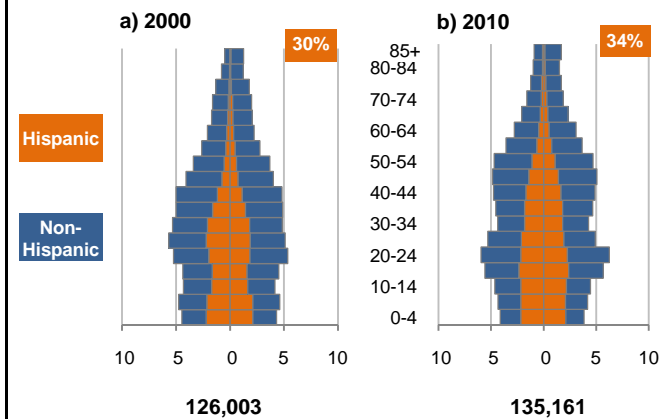
**5. 10-Year Population Change**



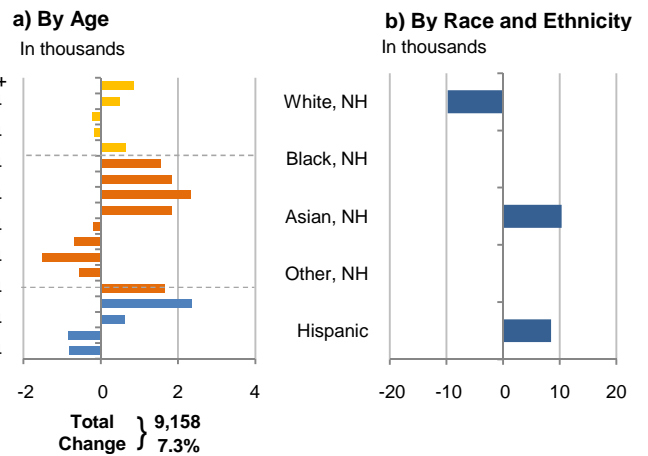
Source: US Census 2010, 2000, or 1990

6. Population by 5-Year Age Brackets

In thousands; males on left, females on right

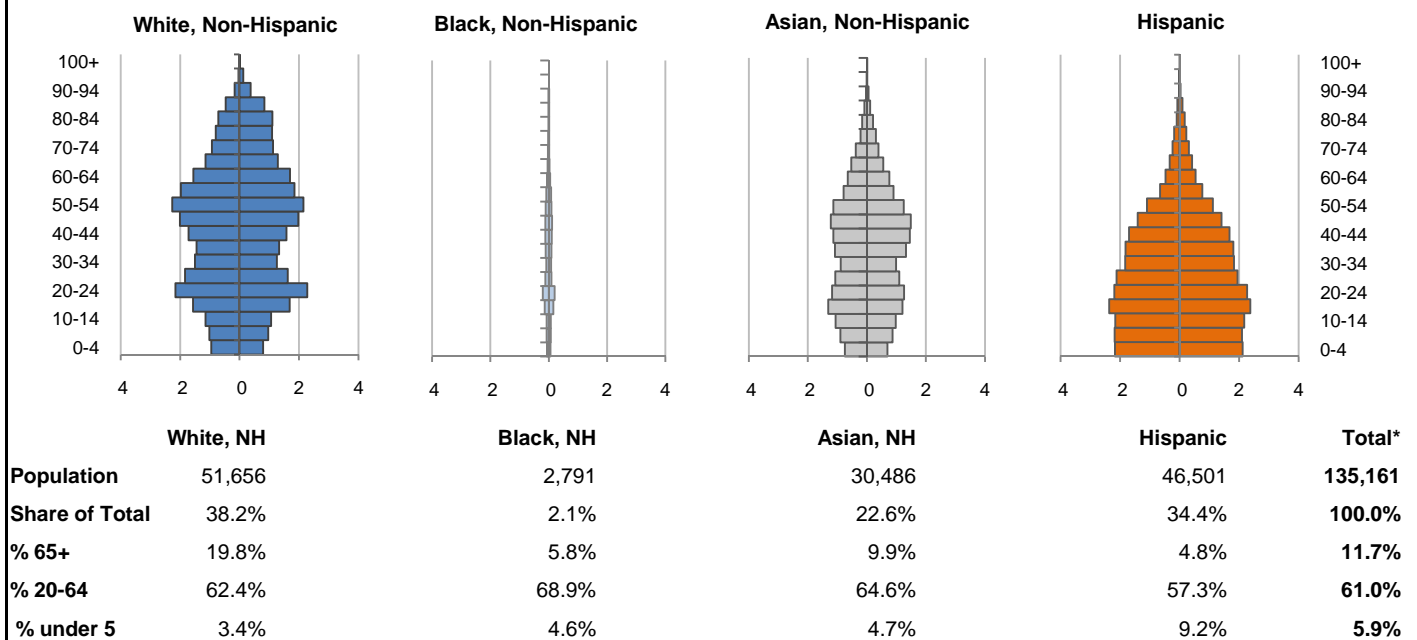


7. 10-Year Change in Population, 2000-10

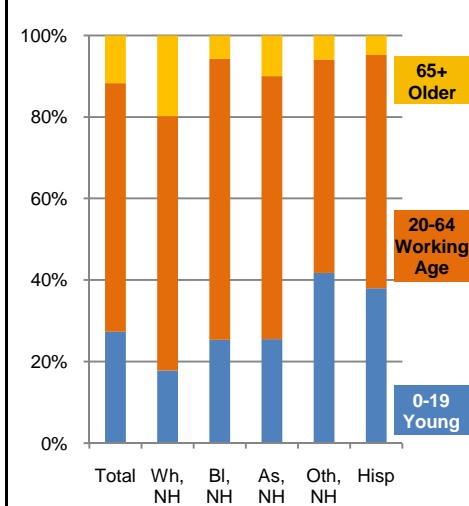


8. Population by Age, Race, and Ethnicity, 2010

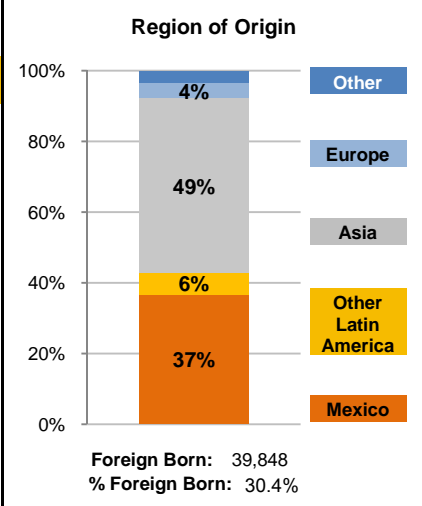
In thousands; males on left, females on right



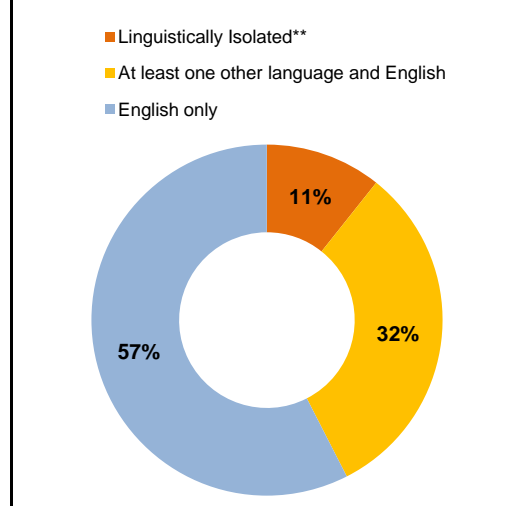
9. Age Mix by Race and Ethnicity, 2010



10. Foreign Born, 2005-09



11. Household Language, 2005-09

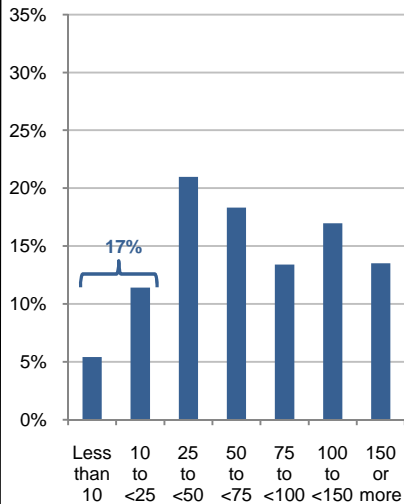


Wh=White; Bl=Black; As=Asian; Oth=Other Race or Two or More Races; Hisp=Hispanic; NH=Non-Hispanic; ACS=American Community Survey 2005-09  
 \*See pages 5-6 for detail on Other, Non-Hispanic  
 \*\*Linguistically Isolated = No one in the household age 14 and over speaks English at least "very well"

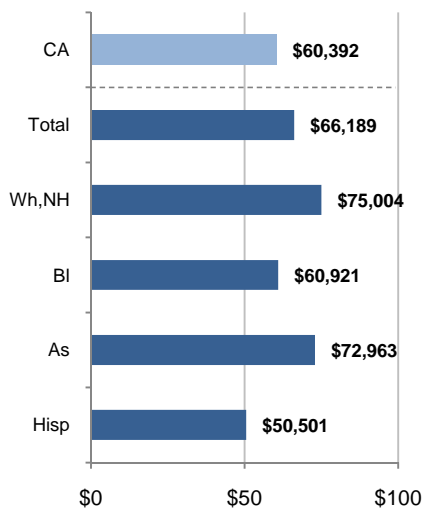
12. Household Income, 2005-09

In thousands of \$ (2009)

a) Income Distribution



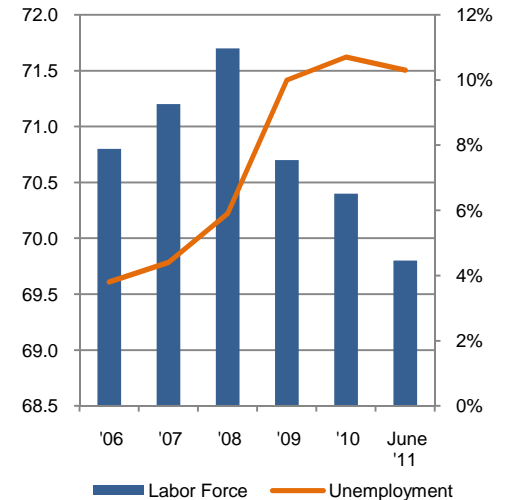
b) Median Household Income by Race and Ethnicity\*



13. Labor Force and Unemployment, 2006-11

Labor Force  
In thousands

Unemployment Rate

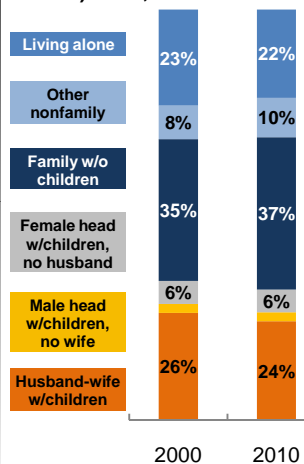


Source: CA Employment Development Department

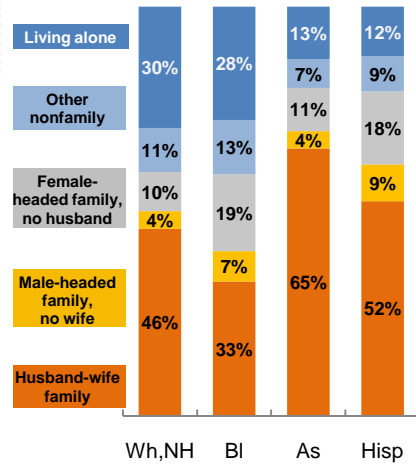
14. Household Type, 2010

% of all households

a) Total, 2000-10

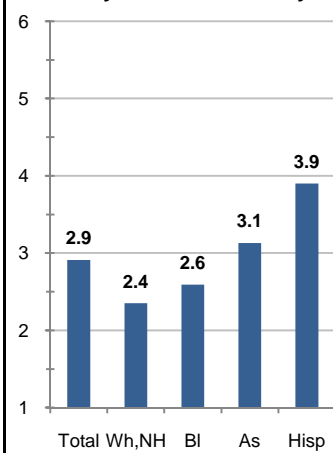


b) By Race and Ethnicity,\* 2010

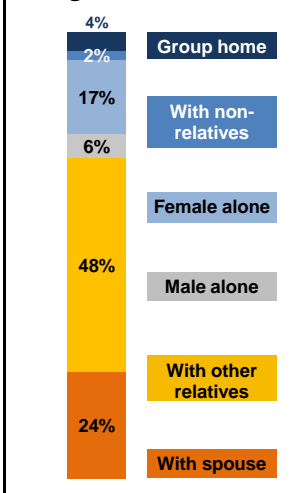


15. Average Household Size, 2010

By Race and Ethnicity\*



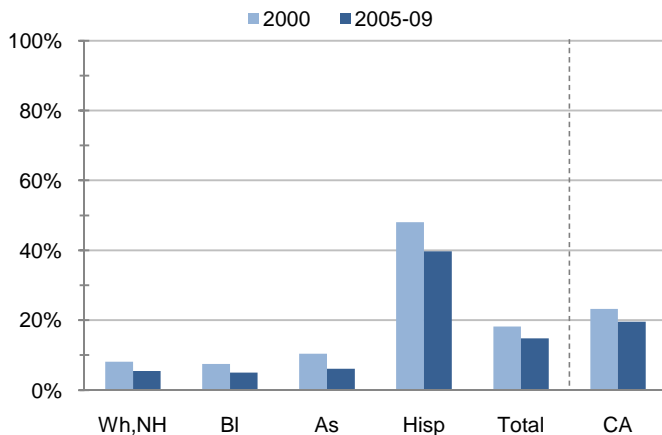
16. Living Arrangements Age 65+, 2005-09



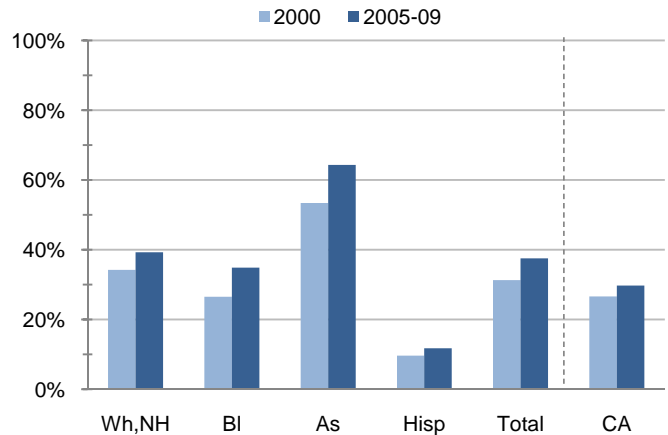
Source: ACS 2005-09

17. Educational Attainment for the Population Age 25 and Over by Race and Ethnicity\*

a) % of Adults Who Did Not Complete High School



b) % of Adults Who Attained a BA or Higher



Source: Census 2000, ACS 2005-09

\*Wh,NH=White,Non-Hispanic; Bl=Black,Hispanic Inclusive; As=Asian,Hispanic Inclusive; Hisp=Hispanic(Includes all races); CA=California Total

Note: In the American Community Survey and for Census variables other than population, Hispanic origin is not broken out for all races.

	White, Non- Hispanic	Black, Non- Hispanic	Asian, Non- Hispanic	Other, Non- Hispanic	Detail for Other, Non-Hispanic				Hispanic or Latino	Total Population
					American Indian & Alaska Native	Native Hawaiian & Pacific Islander	Some Other Race	Two or More Races		
<b>A. Total Population</b>										
<b>2000 Total</b>	61,420	2,675	20,130	3,764	404	251	237	2,872	38,014	126,003
<b>2000 % of Total</b>	48.7%	2.1%	16.0%	3.0%	0.3%	0.2%	0.2%	2.3%	30.2%	100.0%
<b>2010 Total</b>	51,656	2,791	30,486	3,727	251	270	243	2,963	46,501	135,161
<b>2010 % of Total</b>	38.2%	2.1%	22.6%	2.8%	0.2%	0.2%	0.2%	2.2%	34.4%	100.0%
<b>B. Population in Major Age Groups by Race and Ethnicity</b>										
<b>2000</b>										
0-19	12,541	804	5,604	1,416	111	76	79	1,150	15,164	35,529
20-64	37,666	1,771	13,148	2,186	270	162	150	1,604	21,429	76,200
65+	11,213	100	1,378	162	23	13	8	118	1,421	14,274
85+	1,514	6	90	7	0	0	0	7	122	1,739
<b>2010</b>										
0-19	9,192	706	7,758	1,556	46	70	81	1,359	17,642	36,854
20-64	32,250	1,924	19,696	1,951	168	180	150	1,453	26,634	82,455
65+	10,214	161	3,032	220	37	20	12	151	2,225	15,852
85+	1,997	12	298	34	1	5	1	27	243	2,584
<b>C. Age Mix for Each Racial and Ethnic Group</b>										
<b>2000</b>										
0-19	20.4%	30.1%	27.8%	37.6%	27.5%	30.3%	33.3%	40.0%	39.9%	28.2%
20-64	61.3%	66.2%	65.3%	58.1%	66.8%	64.5%	63.3%	55.8%	56.4%	60.5%
65+	18.3%	3.7%	6.8%	4.3%	5.7%	5.2%	3.4%	4.1%	3.7%	11.3%
85+	2.5%	0.2%	0.4%	0.2%	0.0%	0.0%	0.0%	0.2%	0.3%	1.4%
<b>2010</b>										
0-19	17.8%	25.3%	25.4%	41.7%	18.3%	25.9%	33.3%	45.9%	37.9%	27.3%
20-64	62.4%	68.9%	64.6%	52.3%	66.9%	66.7%	61.7%	49.0%	57.3%	61.0%
65+	19.8%	5.8%	9.9%	5.9%	14.7%	7.4%	4.9%	5.1%	4.8%	11.7%
85+	3.9%	0.4%	1.0%	0.9%	0.4%	1.9%	0.4%	0.9%	0.5%	1.9%
<b>D. Racial and Ethnic Mix for Each Age Group</b>										
<b>2000</b>										
0-19	35.3%	2.3%	15.8%	4.0%	0.3%	0.2%	0.2%	3.2%	42.7%	100.0%
20-64	49.4%	2.3%	17.3%	2.9%	0.4%	0.2%	0.2%	2.1%	28.1%	100.0%
65+	78.6%	0.7%	9.7%	1.1%	0.2%	0.1%	0.1%	0.8%	10.0%	100.0%
85+	87.1%	0.3%	5.2%	0.4%	0.0%	0.0%	0.0%	0.4%	7.0%	100.0%
<b>2010</b>										
0-19	24.9%	1.9%	21.1%	4.2%	0.1%	0.2%	0.2%	3.7%	47.9%	100.0%
20-64	39.1%	2.3%	23.9%	2.4%	0.2%	0.2%	0.2%	1.8%	32.3%	100.0%
65+	64.4%	1.0%	19.1%	1.4%	0.2%	0.1%	0.1%	1.0%	14.0%	100.0%
85+	77.3%	0.5%	11.5%	1.3%	0.0%	0.2%	0.0%	1.0%	9.4%	100.0%
<b>E. Population Growth</b>										
<b>2000-10, Change</b>										
0-19	-3,349	-98	2,154	140	-65	-6	2	209	2,478	1,325
20-64	-5,416	153	6,548	-235	-102	18	0	-151	5,205	6,255
65+	-999	61	1,654	58	14	7	4	33	804	1,578
85+	483	6	208	27	1	5	1	20	121	845
<b>Total</b>	<b>-9,764</b>	<b>116</b>	<b>10,356</b>	<b>-37</b>	<b>-153</b>	<b>19</b>	<b>6</b>	<b>91</b>	<b>8,487</b>	<b>9,158</b>
<b>2000-10, % Change</b>										
0-19	-26.7%	-12.2%	38.4%	9.9%	-58.6%	-7.9%	2.5%	18.2%	16.3%	3.7%
20-64	-14.4%	8.6%	49.8%	-10.8%	-37.8%	11.1%	0.0%	-9.4%	24.3%	8.2%
65+	-8.9%	61.0%	120.0%	35.8%	60.9%	53.8%	50.0%	28.0%	56.6%	11.1%
85+	31.9%	100.0%	231.1%	385.7%	N/A	N/A	N/A	285.7%	99.2%	48.6%
<b>Total</b>	<b>-15.9%</b>	<b>4.3%</b>	<b>51.4%</b>	<b>-1.0%</b>	<b>-37.9%</b>	<b>7.6%</b>	<b>2.5%</b>	<b>3.2%</b>	<b>22.3%</b>	<b>7.3%</b>

Source: US Census 2010, 2000

	White, Non- Hispanic	Black, Non- Hispanic	Asian, Non- Hispanic	Other, Non- Hispanic	Detail for Other, Non-Hispanic				Hispanic or Latino	Total Population 2010
					American Indian & Alaska Native	Native Hawaiian & Pacific Islander	Some Other Race	Two or More Races		
<b>F. Population by Library-Defined Age Groups, 2010</b>										
0-5	2,155	158	1,777	429	12	12	16	389	5,167	9,686
6-10	1,989	137	1,791	357	9	13	28	307	4,247	8,521
11-13	1,331	87	1,212	219	6	10	11	192	2,588	5,437
14-18	2,758	227	2,432	432	16	21	22	373	4,618	10,467
19-32	10,632	818	6,291	1,038	59	82	76	821	11,726	30,505
33-45	7,788	539	6,314	466	49	59	46	312	9,102	24,209
46-64	14,789	664	7,637	566	63	53	32	418	6,828	30,484
65-84	8,217	149	2,734	186	36	15	11	124	1,982	13,268
85+	1,997	12	298	34	1	5	1	27	243	2,584
Total	51,656	2,791	30,486	3,727	251	270	243	2,963	46,501	135,161
<b>G. Population by 5-Year Age Brackets, 2010</b>										
0-4	1,745	128	1,446	368	9	10	15	334	4,288	7,975
5-9	1,986	139	1,763	342	9	12	23	298	4,281	8,511
10-14	2,211	143	2,033	385	10	16	23	336	4,333	9,105
15-19	3,250	296	2,516	461	18	32	20	391	4,740	11,263
20-24	4,448	406	2,446	470	20	32	34	384	4,456	12,226
25-29	3,467	212	2,174	309	26	20	27	236	4,063	10,225
30-34	2,764	171	1,875	192	12	23	17	140	3,652	8,654
35-39	2,782	202	2,408	215	21	27	21	146	3,623	9,230
40-44	3,305	217	2,592	166	22	22	16	106	3,375	9,655
45-49	3,988	235	2,711	181	26	15	12	128	2,815	9,930
50-54	4,421	203	2,392	185	14	22	10	139	2,215	9,416
55-59	3,827	165	1,694	137	17	10	5	105	1,420	7,243
60-64	3,248	113	1,404	96	10	9	8	69	1,015	5,876
65-69	2,438	62	1,078	78	16	6	5	51	749	4,405
70-74	2,059	44	765	39	9	6	1	23	550	3,457
75-79	1,901	29	526	43	8	2	4	29	414	2,913
80-84	1,819	14	365	26	3	1	1	21	269	2,493
85-89	1,298	8	194	21	1	2	1	17	172	1,693
90-94	535	4	85	12	0	3	0	9	54	690
95-99	152	0	18	1	0	0	0	1	13	184
100+	12	0	1	0	0	0	0	0	4	17
Total	51,656	2,791	30,486	3,727	251	270	243	2,963	46,501	135,161
<b>H. Median Age, 2000-10</b>										
	White, Non- Hispanic	Black, Hispanic Inclusive	Asian, Hispanic Inclusive		American Indian & Alaska Native, Hispanic Inclusive	Native Hawaiian & Pacific Islander, Hispanic Inclusive	Some Other Race, Hispanic Inclusive	Two or More Races, Hispanic Inclusive	Hispanic or Latino	Total Population
<b>2000</b>	40.6	29.1	32.9		29.9	27.5	24.4	23.2	25.0	32.9
<b>2010</b>	44.8	30.5	37.1		31.6	30.8	25.9	20.9	26.4	34.8

Source: US Census 2010, 2000

Note: In the American Community Survey and for Census variables other than population, Hispanic origin is not broken out for all races.

I. Income Distribution, 2005-09			J. Median Household Income by Race and Ethnicity, 2005-09 (\$2009)						
Range (ths)	Households	% of Total	White, NH	Black	Asian	Hispanic	Total	% of CA	California
<\$10	2,397	5.4%	\$75,004	\$60,921	\$72,963	\$50,501	\$66,189	109.6%	\$60,392
\$10 to <\$25	5,062	11.4%							
\$25 to <\$50	9,310	21.0%							
\$50 to <\$75	8,133	18.3%							
\$75 to <\$100	5,947	13.4%							
\$100 to <\$150	7,527	17.0%							
\$150+	5,988	13.5%							
K. Household Type, 2000-10			2000	2000,%	2010	2010,%			
<b>Total households</b>			43,678	100.0%	45,391	100.0%			
Family Households			29,875	68.4%	31,247	68.8%			
Husband-wife w/children			11,413	26.1%	10,932	24.1%			
Female head, no husband, w/children			2,446	5.6%	2,503	5.5%			
Male head, no wife, w/children			945	2.2%	986	2.2%			
Without children			15,071	34.5%	16,826	37.1%			
Nonfamily households			13,803	31.6%	14,144	31.2%			
Living alone			10,238	23.4%	9,771	21.5%			
Other nonfamily			3,565	8.2%	4,373	9.6%	Source: US Census 2010, 2000		
L. Household Type by Race and Ethnicity, 2010			White, NH	Black	Asian	Hispanic	Total		
<b>Total households</b>			22,504	1,147	9,649	11,261	45,391		
Husband-wife family			45.8%	32.9%	65.4%	52.5%	51.2%		
Family with male head, no wife			4.3%	7.4%	4.2%	9.0%	5.5%		
Family with female head, no husband			9.6%	18.7%	10.6%	17.8%	12.1%		
Living alone			29.6%	27.6%	12.8%	12.1%	21.5%	Source: US	
Other nonfamily			10.8%	13.3%	7.1%	8.6%	9.6%	Census 2010	
M. Poverty, 2005-09									
<b>Percentage of families and people whose income in the past 12 months is below the poverty level</b>								California	
All families						6.7%	9.8%		
Families w/ related children under 18 years						9.3%	14.5%		
Families w/ female householder, no husband present						17.2%	24.2%		
Families w/ female householder, no husband present w/ related children under 18 years						23.0%	32.2%		
All people						10.5%	13.2%		
Under 18 years						12.5%	18.3%		
18 to 64 years						10.5%	11.9%		
65 years and over						5.8%	8.4%		
N. Educational Attainment, 2005-09									
			% at each level of educational attainment						
			White, NH	Black	Asian	Hispanic	Total		
<b>Population 25 years and over</b>			38,514	2,274	19,659	22,210	84,132		
Less than high school			5.5%	5.0%	6.1%	39.7%	14.8%		
High school graduate (includes equivalency)			18.5%	20.6%	9.4%	24.4%	18.2%		
Some college or associate's degree			36.7%	39.5%	20.1%	24.1%	29.5%		
Bachelor's degree or higher			39.3%	34.9%	64.4%	11.8%	37.6%		
O. Employment Status, 2010-11									
			2010	June 2011					
In civilian labor force			70,400	69,800					
Employed			62,900	62,600					
Unemployed, % of labor force			10.7%	10.3%	Source: CA Employment Development Department				
P. Occupation, 2005-09									
			Estimate		Percent				
<b>Civilian employed population, 16 yrs &amp; over</b>			63,837		100.0%				
Management, professional, and related occupations			25,854		40.5%				
Service occupations			8,617		13.5%				
Sales and office occupations			18,130		28.4%				
Farming, fishing, and forestry occupations			166		0.3%				
Construction, extraction, maintenance, and repair occupations			4,622		7.2%				
Production, transportation, and material moving occupations			6,448		10.1%				
Q. Class of Worker, 2005-09									
			Estimate		Percent				
<b>Civilian employed population, 16 yrs &amp; over</b>			63,837		100.0%				
Private, for profit, wage and salary employee			43,460		68.1%				
Private, not for profit, wage and salary employee			4,317		6.8%				
Private, for profit, wage and salary self-employed in own business			2,830		4.4%				
Government workers			7,744		12.1%				
Self-employed in own not incorporated business			5,344		8.4%				
Unpaid family workers in family business			142		0.2%				

Source: American Community Survey 2005-09, unless otherwise stated

ProfileTemplate 9-8-11.xlsr 9/14/2011 15:06

Note: In the American Community Survey and for US Census variables other than population, Hispanic origin is not broken out for all races. White, NH represents White, Non-Hispanic. Black and Asian are Hispanic inclusive.