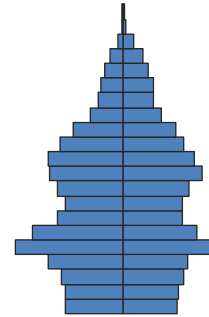


Goleta is part of the Santa Barbara Public Library jurisdiction. This individual city profile is provided for reference.



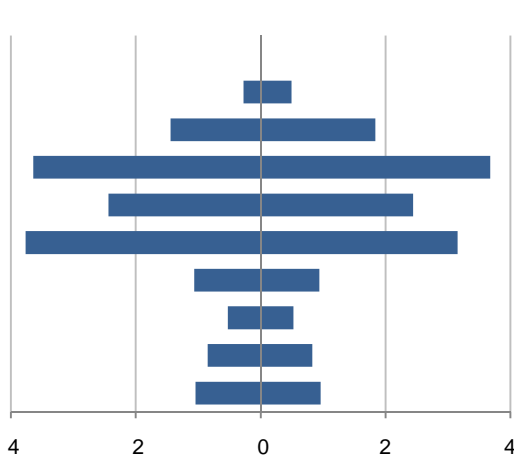
Population by Age

*This demographic profile is part of a series of library jurisdiction profiles prepared for the California State Library by the Stanford Center on Longevity. The project, "Understanding California's Shifting Demographics," was supported in whole by the U.S. Institute of Museum and Library Services under the provisions of the Library Services and Technology Act, administered in California by the State Librarian. The opinions expressed herein do not necessarily reflect the position or policy of the U.S. Institute of Museum and Library Services or the California State Library, and no official endorsement by the U.S. Institute of Museum and Library Services or the California State Library should be inferred.*

Key Indicators			2000	2010
<b>Population Growth</b>				
	Total population		#N/A	29,888
	10-year growth		#N/A	#N/A
<b>Diversity</b>				
	% Hispanic		#N/A	32.9%
	% Asian, non-Hispanic		#N/A	9.0%
	% White, non-Hispanic		#N/A	53.6%
	% Black, non-Hispanic		#N/A	1.3%
<b>Aging</b>				
	% 65+		#N/A	13.5%
	Median age		#N/A	36.5
<b>Households</b>				
	% Married couple with children		#N/A	21.3%
	% Living alone		#N/A	25.1%

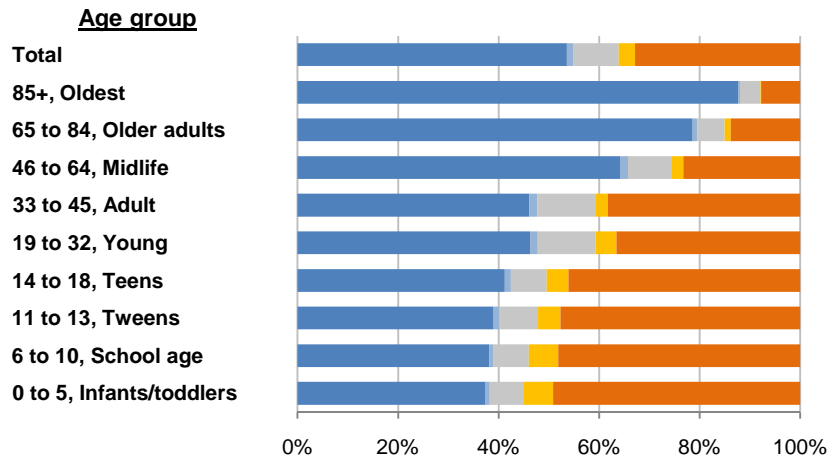
1. Population by Library-Defined Age Group, 2010

In thousands; males on left, females on right



2. Race and Ethnicity by Library-Defined Age Group, 2010

White, NH Black, NH Asian, NH Other, NH Hispanic

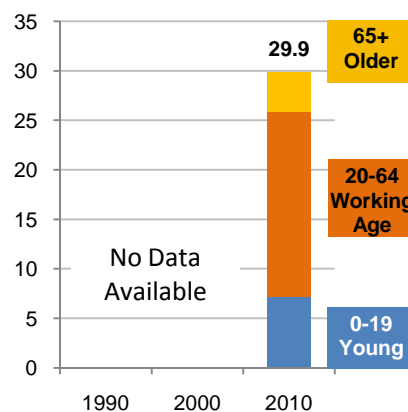


3. Population Growth by Library-Defined Age Group, 2000-10

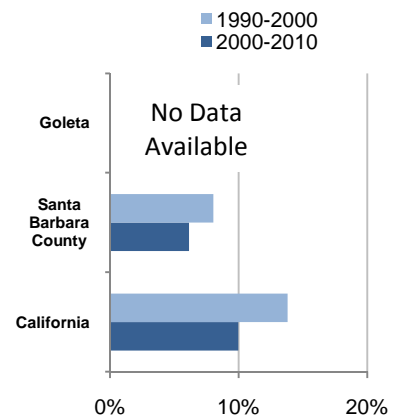
	2010	Change	% Change
<b>Total</b>	29,888	#N/A	#N/A
<b>85+</b>	769	#N/A	#N/A
<b>65 to 84</b>	3,279	#N/A	#N/A
<b>46 to 64</b>	7,317	#N/A	#N/A
<b>33 to 45</b>	4,875	#N/A	#N/A
<b>19 to 32</b>	6,915	#N/A	#N/A
<b>14 to 18</b>	2,004	#N/A	#N/A
<b>11 to 13</b>	1,053	#N/A	#N/A
<b>6 to 10</b>	1,676	#N/A	#N/A
<b>0 to 5</b>	2,000	#N/A	#N/A

4. Population Total, 1990-2010

In thousands



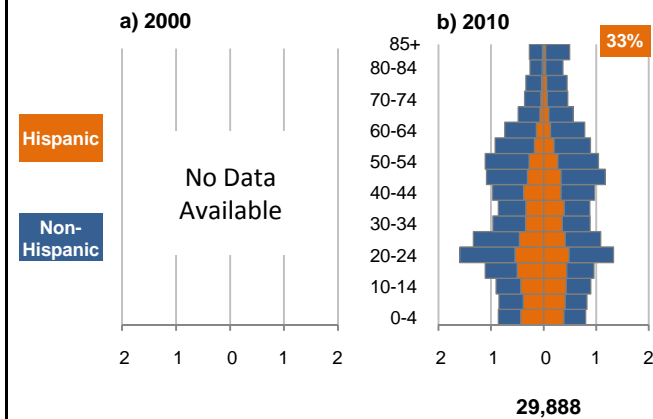
5. 10-Year Population Change



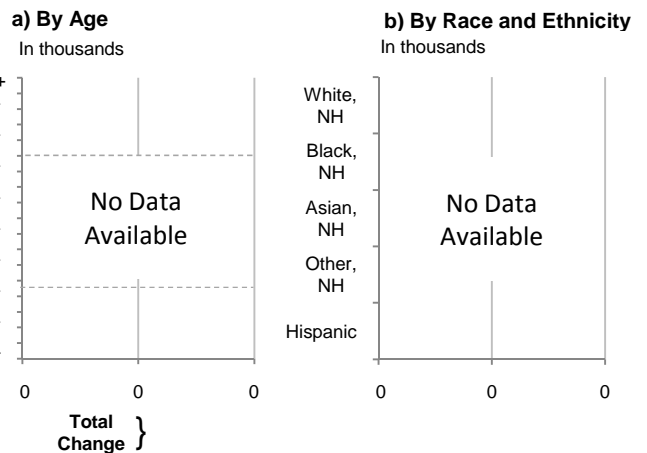
Source: US Census 2010, 2000, or 1990

6. Population by 5-Year Age Brackets

In thousands; males on left, females on right

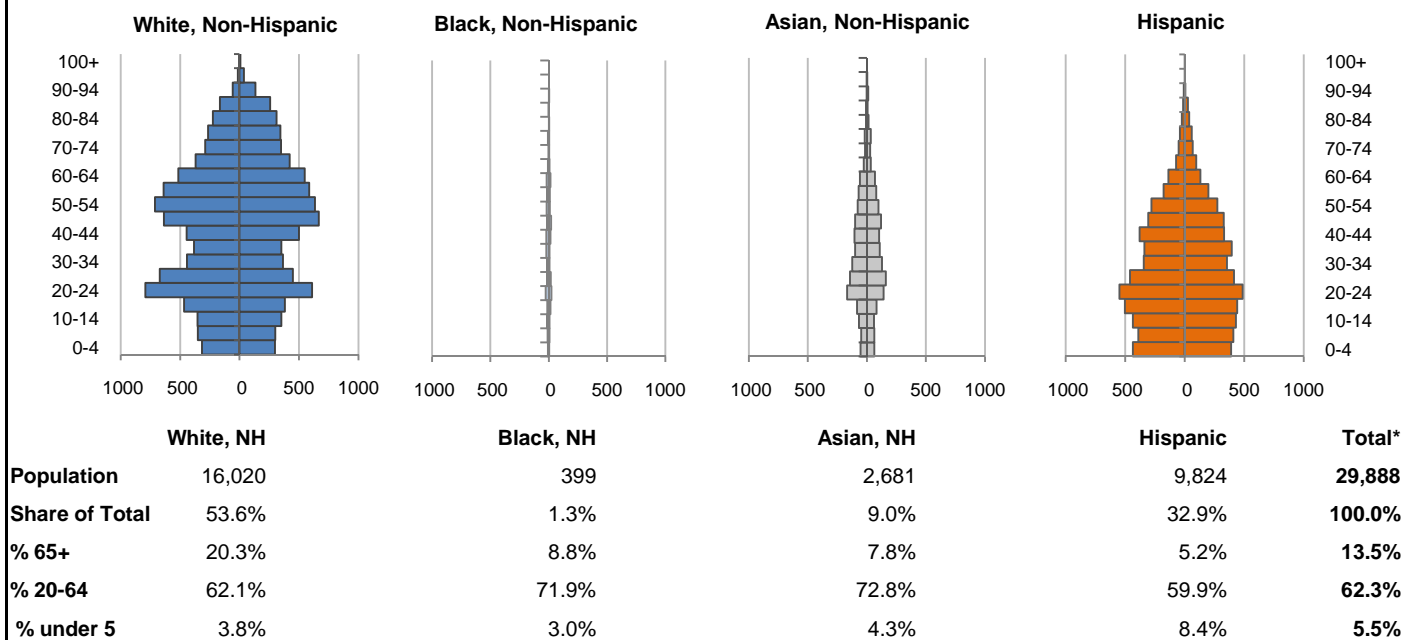


7. 10-Year Change in Population, 2000-10

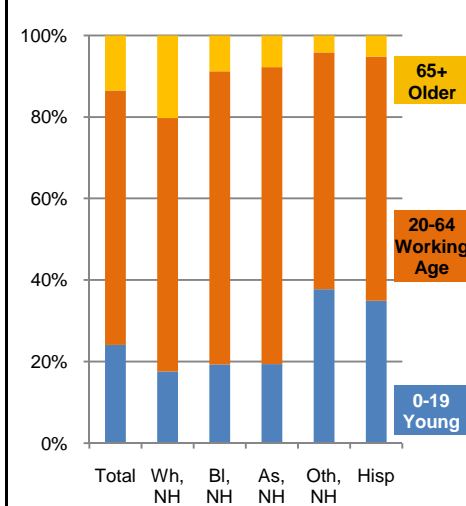


8. Population by Age, Race, and Ethnicity, 2010

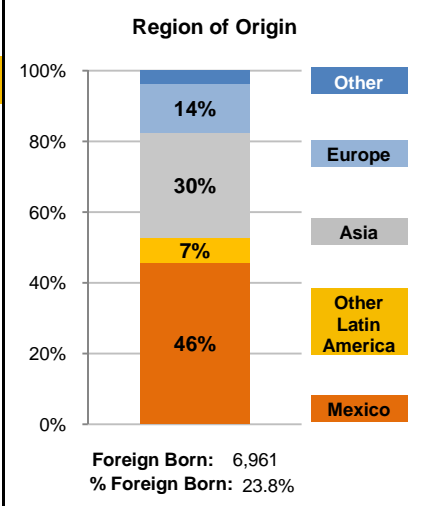
Males on left, females on right



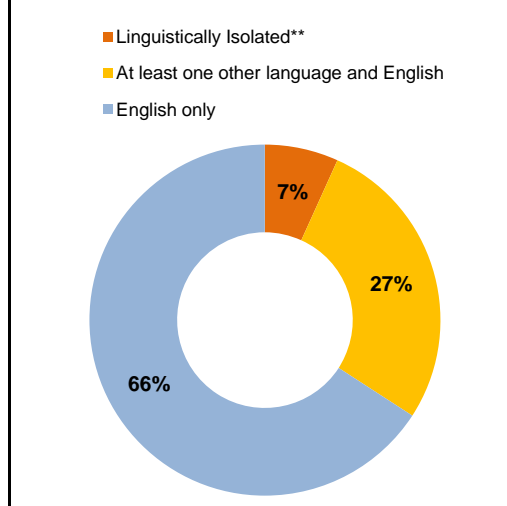
9. Age Mix by Race and Ethnicity, 2010



10. Foreign Born, 2005-09



11. Household Language, 2005-09



Wh=White; Bl=Black; As=Asian; Oth=Other Race or Two or More Races; Hisp=Hispanic; NH=Non-Hispanic; ACS=American Community Survey 2005-09

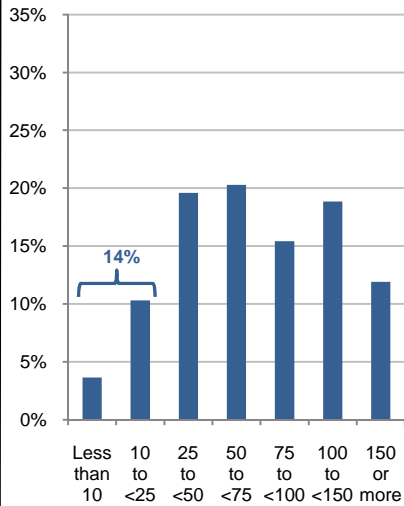
\*See pages 5-6 for detail on Other, Non-Hispanic

\*\*Linguistically Isolated = No one in the household age 14 and over speaks English at least "very well"

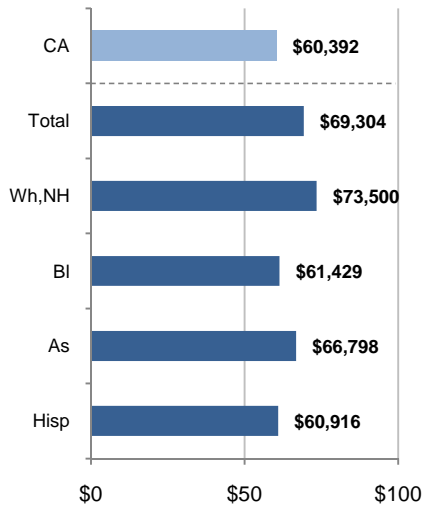
12. Household Income, 2005-09

In thousands of \$ (2009)

a) Income Distribution



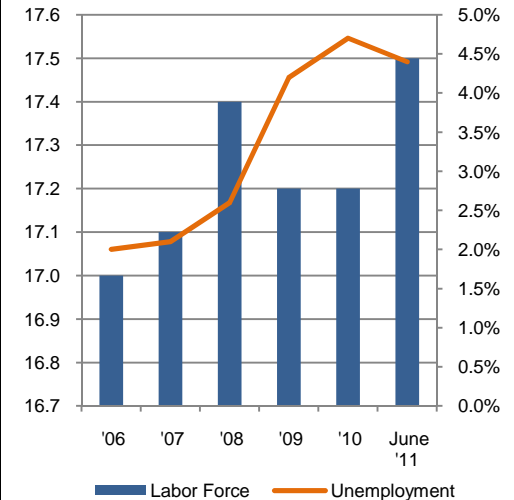
b) Median Household Income by Race and Ethnicity\*



13. Labor Force and Unemployment, 2006-11

Labor Force  
In thousands

Unemployment Rate



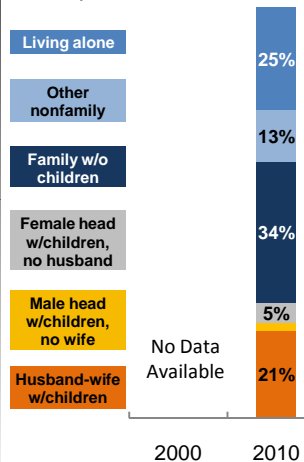
Source: CA Employment Development Department

Source: ACS 2005-09

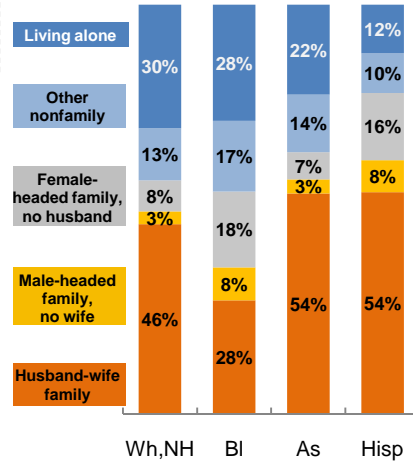
14. Household Type, 2010

% of all households

a) Total, 2000-10

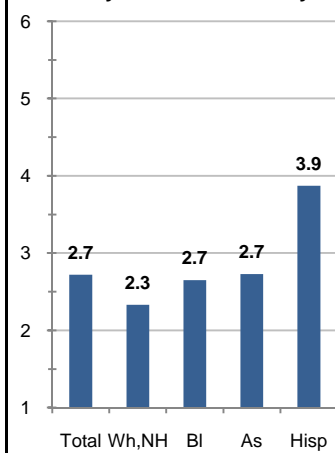


b) By Race and Ethnicity,\* 2010

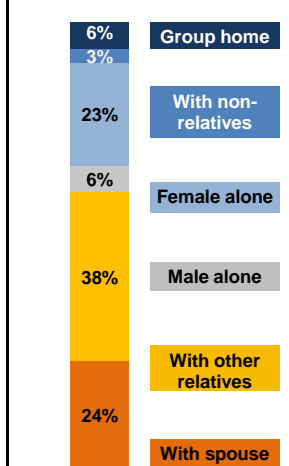


15. Average Household Size, 2010

By Race and Ethnicity\*



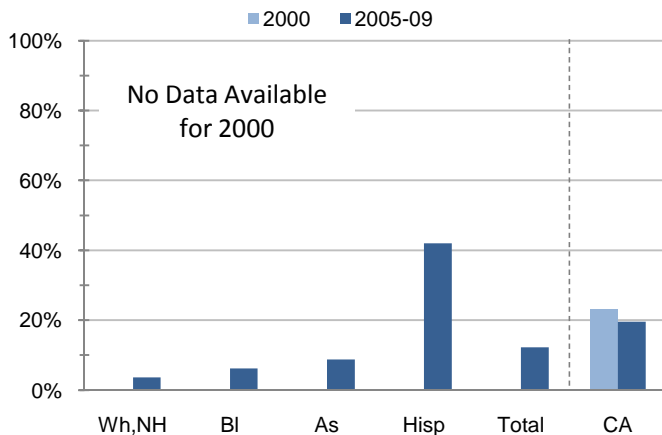
16. Living Arrangements Age 65+, 2005-09



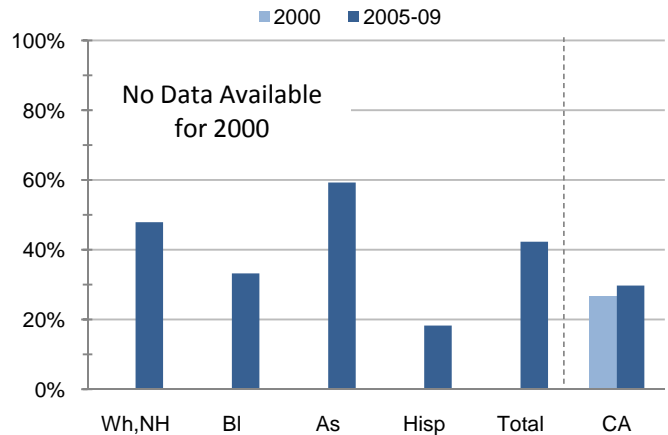
Source: ACS 2005-09

17. Educational Attainment for the Population Age 25 and Over by Race and Ethnicity\*

a) % of Adults Who Did Not Complete High School



b) % of Adults Who Attained a BA or Higher



Source: Census 2000, ACS 2005-09

\*Wh,NH=White,Non-Hispanic; BI=Black,Hispanic Inclusive; As=Asian,Hispanic Inclusive; Hisp=Hispanic(Includes all races); CA=California Total

Note: In the American Community Survey and for Census variables other than population, Hispanic origin is not broken out for all races.

	White, Non- Hispanic	Black, Non- Hispanic	Asian, Non- Hispanic	Other, Non- Hispanic	Detail for Other, Non-Hispanic				Hispanic or Latino	Total Population
					American Indian & Alaska Native	Native Hawaiian & Pacific Islander	Some Other Race	Two or More Races		
<b>A. Total Population</b>										
2000 Total	#N/A	#N/A	#N/A	#N/A	#N/A	#N/A	#N/A	#N/A	#N/A	#N/A
2000 % of Total	#N/A	#N/A	#N/A	#N/A	#N/A	#N/A	#N/A	#N/A	#N/A	100.0%
2010 Total	16,020	399	2,681	964	104	25	71	764	9,824	29,888
2010 % of Total	53.6%	1.3%	9.0%	3.2%	0.3%	0.1%	0.2%	2.6%	32.9%	100.0%
<b>B. Population in Major Age Groups by Race and Ethnicity</b>										
<b>2000</b>										
0-19	#N/A	#N/A	#N/A	#N/A	#N/A	#N/A	#N/A	#N/A	#N/A	#N/A
20-64	#N/A	#N/A	#N/A	#N/A	#N/A	#N/A	#N/A	#N/A	#N/A	#N/A
65+	#N/A	#N/A	#N/A	#N/A	#N/A	#N/A	#N/A	#N/A	#N/A	#N/A
85+	#N/A	#N/A	#N/A	#N/A	#N/A	#N/A	#N/A	#N/A	#N/A	#N/A
<b>2010</b>										
0-19	2,817	77	519	364	15	2	26	321	3,429	7,206
20-64	9,952	287	1,953	560	77	20	43	420	5,882	18,634
65+	3,251	35	209	40	12	3	2	23	513	4,048
85+	674	3	31	1	1	0	0	0	60	769
<b>C. Age Mix for Each Racial and Ethnic Group</b>										
<b>2000</b>										
0-19	#N/A	#N/A	#N/A	#N/A	#N/A	#N/A	#N/A	#N/A	#N/A	#N/A
20-64	#N/A	#N/A	#N/A	#N/A	#N/A	#N/A	#N/A	#N/A	#N/A	#N/A
65+	#N/A	#N/A	#N/A	#N/A	#N/A	#N/A	#N/A	#N/A	#N/A	#N/A
85+	#N/A	#N/A	#N/A	#N/A	#N/A	#N/A	#N/A	#N/A	#N/A	#N/A
<b>2010</b>										
0-19	17.6%	19.3%	19.4%	37.8%	14.4%	8.0%	36.6%	42.0%	34.9%	24.1%
20-64	62.1%	71.9%	72.8%	58.1%	74.0%	80.0%	60.6%	55.0%	59.9%	62.3%
65+	20.3%	8.8%	7.8%	4.1%	11.5%	12.0%	2.8%	3.0%	5.2%	13.5%
85+	4.2%	0.8%	1.2%	0.1%	1.0%	0.0%	0.0%	0.0%	0.6%	2.6%
<b>D. Racial and Ethnic Mix for Each Age Group</b>										
<b>2000</b>										
0-19	#N/A	#N/A	#N/A	#N/A	#N/A	#N/A	#N/A	#N/A	#N/A	#N/A
20-64	#N/A	#N/A	#N/A	#N/A	#N/A	#N/A	#N/A	#N/A	#N/A	#N/A
65+	#N/A	#N/A	#N/A	#N/A	#N/A	#N/A	#N/A	#N/A	#N/A	#N/A
85+	#N/A	#N/A	#N/A	#N/A	#N/A	#N/A	#N/A	#N/A	#N/A	#N/A
<b>2010</b>										
0-19	39.1%	1.1%	7.2%	5.1%	0.2%	0.0%	0.4%	4.5%	47.6%	100.0%
20-64	53.4%	1.5%	10.5%	3.0%	0.4%	0.1%	0.2%	2.3%	31.6%	100.0%
65+	80.3%	0.9%	5.2%	1.0%	0.3%	0.1%	0.0%	0.6%	12.7%	100.0%
85+	87.6%	0.4%	4.0%	0.1%	0.1%	0.0%	0.0%	0.0%	7.8%	100.0%
<b>E. Population Growth</b>										
<b>2000-10, Change</b>										
0-19	#N/A	#N/A	#N/A	#N/A	#N/A	#N/A	#N/A	#N/A	#N/A	#N/A
20-64	#N/A	#N/A	#N/A	#N/A	#N/A	#N/A	#N/A	#N/A	#N/A	#N/A
65+	#N/A	#N/A	#N/A	#N/A	#N/A	#N/A	#N/A	#N/A	#N/A	#N/A
85+	#N/A	#N/A	#N/A	#N/A	#N/A	#N/A	#N/A	#N/A	#N/A	#N/A
Total	#N/A	#N/A	#N/A	#N/A	#N/A	#N/A	#N/A	#N/A	#N/A	#N/A
<b>2000-10, % Change</b>										
0-19	#N/A	#N/A	#N/A	#N/A	#N/A	#N/A	#N/A	#N/A	#N/A	#N/A
20-64	#N/A	#N/A	#N/A	#N/A	#N/A	#N/A	#N/A	#N/A	#N/A	#N/A
65+	#N/A	#N/A	#N/A	#N/A	#N/A	#N/A	#N/A	#N/A	#N/A	#N/A
85+	#N/A	#N/A	#N/A	#N/A	#N/A	#N/A	#N/A	#N/A	#N/A	#N/A
Total	#N/A	#N/A	#N/A	#N/A	#N/A	#N/A	#N/A	#N/A	#N/A	#N/A

Source: US Census 2010, 2000

	White, Non- Hispanic	Black, Non- Hispanic	Asian, Non- Hispanic	Other, Non- Hispanic	Detail for Other, Non-Hispanic				Hispanic or Latino	Total Population 2010
					American Indian & Alaska Native	Native Hawaiian & Pacific Islander	Some Other Race	Two or More Races		
<b>F. Population by Library-Defined Age Groups, 2010</b>										
0-5	748	17	136	116	5	1	9	101	983	2,000
6-10	639	15	117	98	1	1	4	92	807	1,676
11-13	411	12	81	47	1	0	4	42	502	1,053
14-18	826	24	144	86	6	0	6	74	924	2,004
19-32	3,200	103	800	285	19	12	25	229	2,527	6,915
33-45	2,249	78	567	115	16	3	6	90	1,866	4,875
46-64	4,696	115	627	177	44	5	15	113	1,702	7,317
65-84	2,577	32	178	39	11	3	2	23	453	3,279
85+	674	3	31	1	1	0	0	0	60	769
Total	16,020	399	2,681	964	104	25	71	764	9,824	29,888
<b>G. Population by 5-Year Age Brackets, 2010</b>										
0-4	613	12	116	94	4	1	6	83	823	1,658
5-9	651	17	111	99	2	0	7	90	798	1,676
10-14	704	21	126	84	2	1	6	75	865	1,800
15-19	849	27	166	87	7	0	7	73	943	2,072
20-24	1,402	47	308	129	8	6	10	105	1,033	2,919
25-29	1,120	34	303	95	2	4	9	80	873	2,425
30-34	808	22	252	70	9	2	5	54	700	1,852
35-39	735	27	210	38	8	1	2	27	732	1,742
40-44	947	37	209	44	6	1	2	35	710	1,947
45-49	1,306	37	221	58	10	1	4	43	635	2,257
50-54	1,345	28	175	57	16	0	7	34	553	2,158
55-59	1,225	24	148	40	12	3	1	24	377	1,814
60-64	1,064	31	127	29	6	2	3	18	269	1,520
65-69	793	12	59	16	4	1	1	10	170	1,050
70-74	640	7	44	9	3	2	0	4	120	820
75-79	608	10	53	10	3	0	0	7	100	781
80-84	536	3	22	4	1	0	1	2	63	628
85-89	423	1	12	1	1	0	0	0	41	478
90-94	192	2	13	0	0	0	0	0	15	222
95-99	51	0	6	0	0	0	0	0	3	60
100+	8	0	0	0	0	0	0	0	1	9
Total	16,020	399	2,681	964	104	25	71	764	9,824	29,888
<b>H. Median Age, 2000-10</b>										
	White, Non- Hispanic	Black, Hispanic Inclusive	Asian, Hispanic Inclusive		American Indian & Alaska Native, Hispanic Inclusive	Native Hawaiian & Pacific Islander, Hispanic Inclusive	Some Other Race, Hispanic Inclusive	Two or More Races, Hispanic Inclusive	Hispanic or Latino	Total Population
2000	#N/A	#N/A	#N/A		#N/A	#N/A	#N/A	#N/A	#N/A	#N/A
2010	45.7	35.2	34.1		33.2	31.0	26.7	22.5	27.4	36.5

Source: US Census 2010, 2000

Note: In the American Community Survey and for Census variables other than population, Hispanic origin is not broken out for all races.

I. Income Distribution, 2005-09			J. Median Household Income by Race and Ethnicity, 2005-09 (\$2009)						
Range (ths)	Households	% of Total	White, NH	Black	Asian	Hispanic	Total	% of CA	California
<\$10	387	3.6%	\$73,500	\$61,429	\$66,798	\$60,916	\$69,304	114.8%	\$60,392
\$10 to <\$25	1,097	10.3%							
\$25 to <\$50	2,084	19.6%							
\$50 to <\$75	2,156	20.3%							
\$75 to <\$100	1,641	15.4%							
\$100 to <\$150	2,003	18.8%							
\$150+	1,267	11.9%							
K. Household Type, 2000-10			2000	2000,%	2010	2010,%			
<b>Total households</b>			#N/A	100.0%	10,903	100.0%			
Family Households			#N/A	#N/A	6,806	62.4%			
Husband-wife w/children			#N/A	#N/A	2,320	21.3%			
Female head, no husband, w/children			#N/A	#N/A	518	4.8%			
Male head, no wife, w/children			#N/A	#N/A	212	1.9%			
Without children			#N/A	#N/A	3,756	34.4%			
Nonfamily households			#N/A	#N/A	4,097	37.6%			
Living alone			#N/A	#N/A	2,732	25.1%			
Other nonfamily			#N/A	#N/A	1,365	12.5%	Source: US Census 2010, 2000		
L. Household Type by Race and Ethnicity, 2010			White, NH	Black	Asian	Hispanic	Total		
<b>Total households</b>			7,106	173	947	2,412	10,903		
Husband-wife family			46.4%	27.7%	53.9%	54.2%	48.3%		
Family with male head, no wife			3.1%	8.1%	3.5%	7.9%	4.3%		
Family with female head, no husband			7.6%	18.5%	6.7%	16.4%	9.8%		
Living alone			30.1%	28.3%	22.0%	11.9%	25.1%	Source: US	
Other nonfamily			12.8%	17.3%	14.0%	9.7%	12.5%	Census 2010	
M. Poverty, 2005-09									
<b>Percentage of families and people whose income in the past 12 months is below the poverty level</b>								California	
All families						4.9%	9.8%		
Families w/ related children under 18 years						7.1%	14.5%		
Families w/ female householder, no husband present						11.7%	24.2%		
Families w/ female householder, no husband present w/ related children under 18 years						12.7%	32.2%		
All people						9.1%	13.2%		
Under 18 years						8.2%	18.3%		
18 to 64 years						10.3%	11.9%		
65 years and over						4.8%	8.4%		
N. Educational Attainment, 2005-09									
			% at each level of educational attainment						
			White, NH	Black	Asian	Hispanic	Total		
<b>Population 25 years and over</b>			11,378	421	1,583	3,666	17,448		
Less than high school			3.6%	6.2%	8.7%	42.0%	12.2%		
High school graduate (includes equivalency)			17.1%	8.3%	8.3%	12.7%	15.0%		
Some college or associate's degree			31.4%	52.3%	23.7%	27.0%	30.5%		
Bachelor's degree or higher			47.9%	33.3%	59.3%	18.3%	42.3%		
O. Employment Status, 2010-11									
			2010	June 2011					
In civilian labor force			17,200	17,500					
Employed			16,400	16,700					
Unemployed, % of labor force			4.7%	4.4%	Source: CA Employment Development Department				
P. Occupation, 2005-09									
					Estimate	Percent			
<b>Civilian employed population, 16 yrs &amp; over</b>					14,780	100.0%			
Management, professional, and related occupations					6,955	47.1%			
Service occupations					2,477	16.8%			
Sales and office occupations					3,704	25.1%			
Farming, fishing, and forestry occupations					30	0.2%			
Construction, extraction, maintenance, and repair occupations					491	3.3%			
Production, transportation, and material moving occupations					1,123	7.6%			
Q. Class of Worker, 2005-09									
					Estimate	Percent			
<b>Civilian employed population, 16 yrs &amp; over</b>					14,780	100.0%			
Private, for profit, wage and salary employee					8,143	55.1%			
Private, not for profit, wage and salary employee					1,418	9.6%			
Private, for profit, wage and salary self-employed in own business					634	4.3%			
Government workers					3,076	20.8%			
Self-employed in own not incorporated business					1,460	9.9%			
Unpaid family workers in family business					49	0.3%			

Source: American Community Survey 2005-09, unless otherwise stated

ProfileTemplate 9-8-11.xlsr 9/15/2011 10:03

Note: In the American Community Survey and for US Census variables other than population, Hispanic origin is not broken out for all races. White, NH represents White, Non-Hispanic. Black and Asian are Hispanic inclusive.