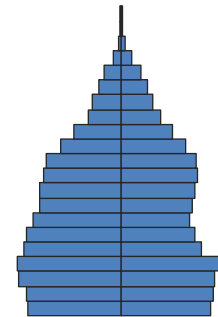


This full county profile is provided for reference. The Imperial County Library jurisdiction includes only a part of the county and is covered in a separate profile.



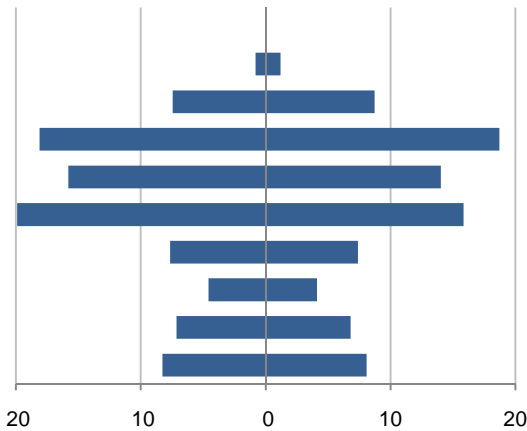
Population by Age

This demographic profile is part of a series of library jurisdiction profiles prepared for the California State Library by the Stanford Center on Longevity. The project, "Understanding California's Shifting Demographics," was supported in whole by the U.S. Institute of Museum and Library Services under the provisions of the Library Services and Technology Act, administered in California by the State Librarian. The opinions expressed herein do not necessarily reflect the position or policy of the U.S. Institute of Museum and Library Services or the California State Library, and no official endorsement by the U.S. Institute of Museum and Library Services or the California State Library should be inferred.

Key Indicators			
		2000	2010
Population Growth			
	Total population	142,361	174,528
	10-year growth	30.2%	22.6%
Diversity			
	% Hispanic	72.2%	80.4%
	% Asian, non-Hispanic	1.7%	1.3%
	% White, non-Hispanic	20.2%	13.7%
	% Black, non-Hispanic	3.6%	2.9%
Aging			
	% 65+	10.0%	10.4%
	Median age	31.0	31.9
Households			
	% Married couple with children	34.9%	28.0%
	% Living alone	17.0%	17.0%

1. Population by Library-Defined Age Group, 2010

In thousands; males on left, females on right

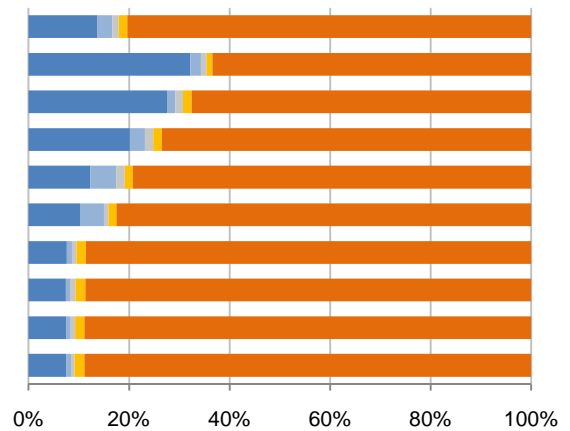


2. Race and Ethnicity by Library-Defined Age Group, 2010

Legend: White, NH (Blue), Black, NH (Light Blue), Asian, NH (Grey), Other, NH (Yellow), Hispanic (Orange)

Age group

- Total
- 85+, Oldest
- 65 to 84, Older adults
- 46 to 64, Midlife
- 33 to 45, Adult
- 19 to 32, Young
- 14 to 18, Teens
- 11 to 13, Tweens
- 6 to 10, School age
- 0 to 5, Infants/toddlers

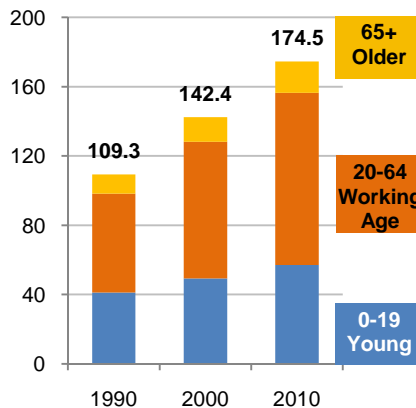


3. Population Growth by Library-Defined Age Group, 2000-10

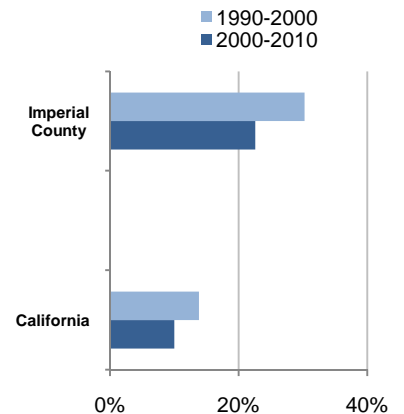
	2010	Change	% Change
Total	174,528	32,167	22.6%
85+	2,005	792	65.3%
65 to 84	16,147	3,055	23.3%
46 to 64	36,804	13,000	54.6%
33 to 45	29,832	954	3.3%
19 to 32	35,714	7,445	26.3%
14 to 18	15,034	2,179	17.0%
11 to 13	8,692	893	11.5%
6 to 10	13,941	714	5.4%
0 to 5	16,359	3,135	23.7%

4. Population Total, 1990-2010

In thousands



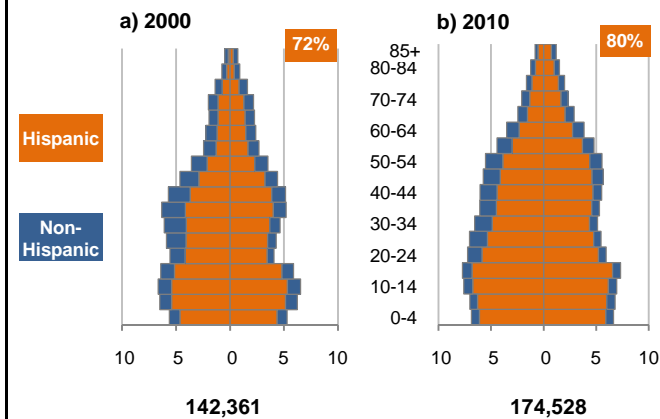
5. 10-Year Population Change



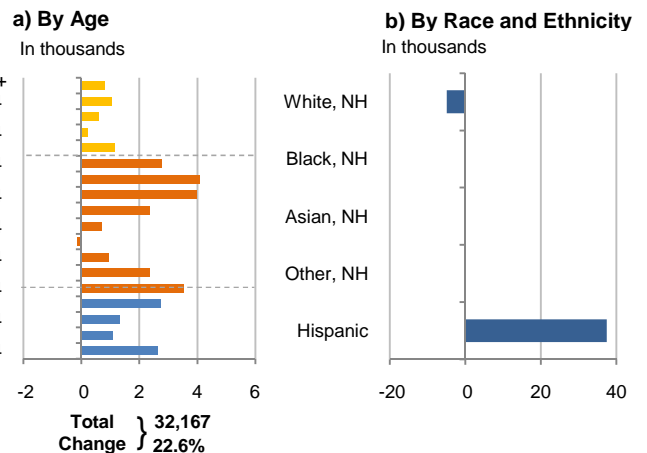
Source: US Census 2010, 2000, or 1990

6. Population by 5-Year Age Brackets

In thousands; males on left, females on right

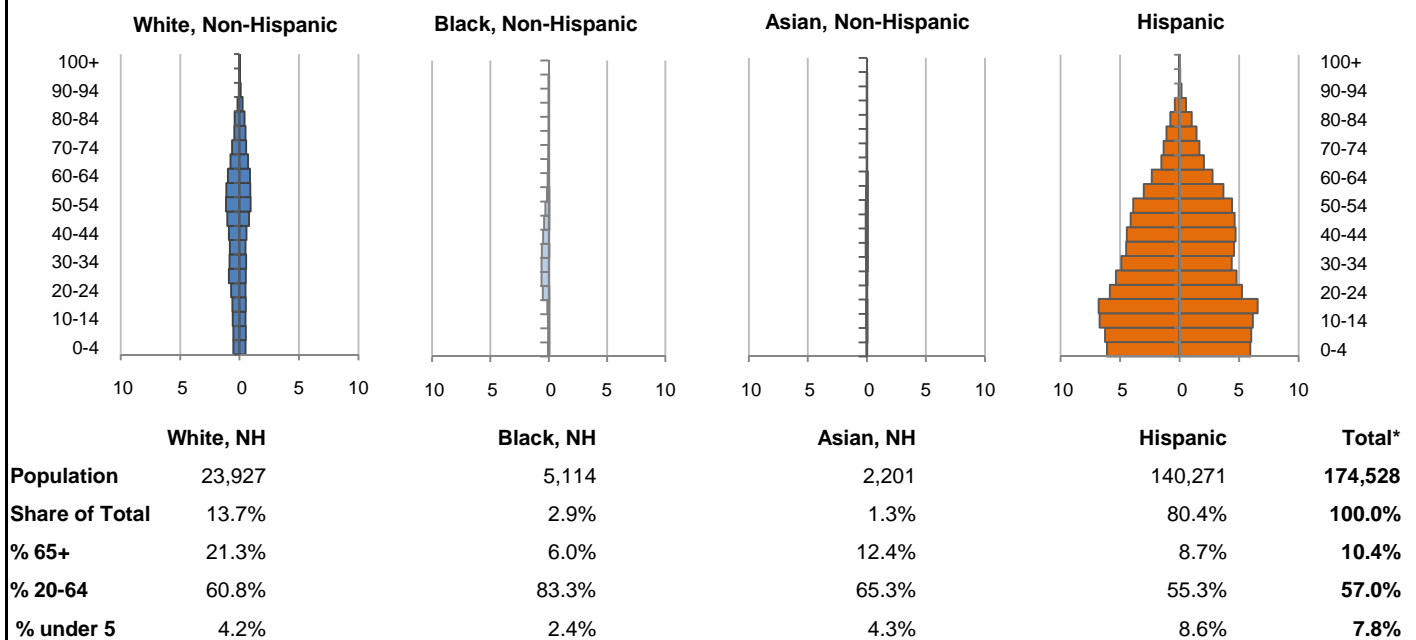


7. 10-Year Change in Population, 2000-10

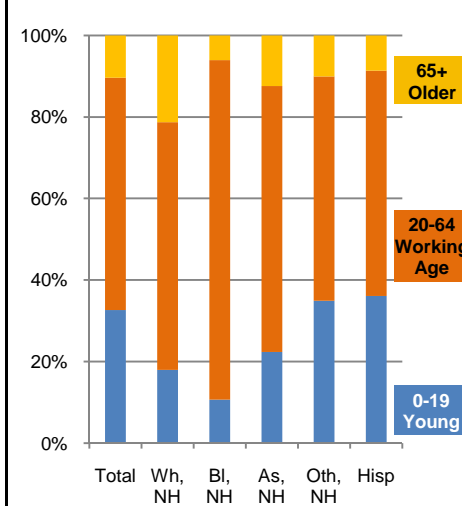


8. Population by Age, Race, and Ethnicity, 2010

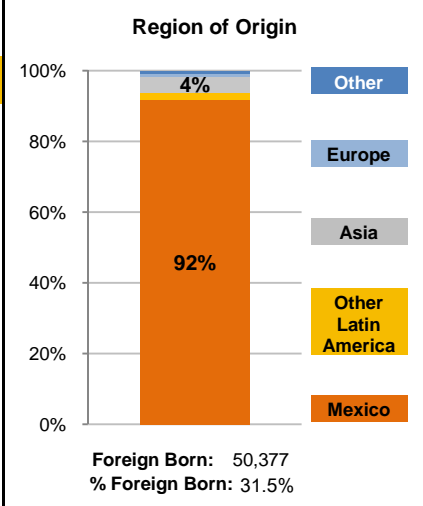
In thousands; males on left, females on right



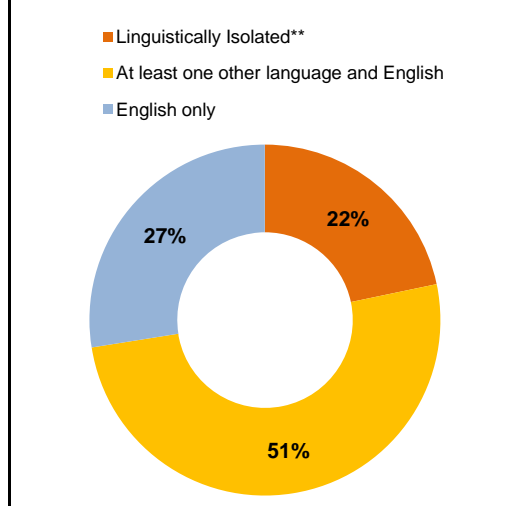
9. Age Mix by Race and Ethnicity, 2010



10. Foreign Born, 2005-09



11. Household Language, 2005-09

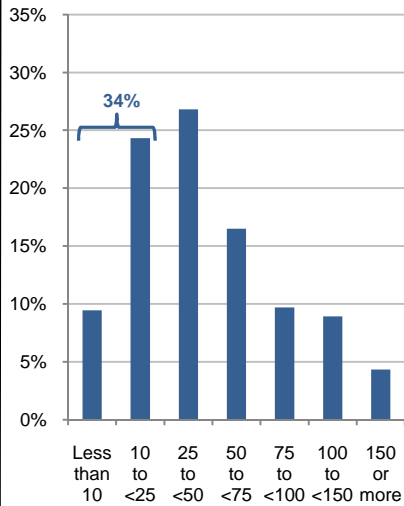


Wh=White; Bl=Black; As=Asian; Oth=Other Race or Two or More Races; Hisp=Hispanic; NH=Non-Hispanic; ACS=American Community Survey 2005-09
*See pages 5-6 for detail on Other, Non-Hispanic
**Linguistically Isolated = No one in the household age 14 and over speaks English at least "very well"

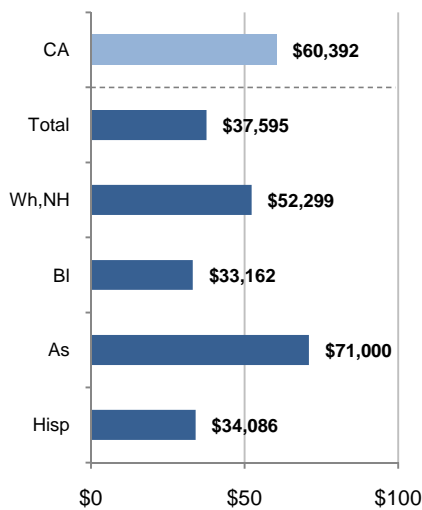
12. Household Income, 2005-09

In thousands of \$ (2009)

a) Income Distribution



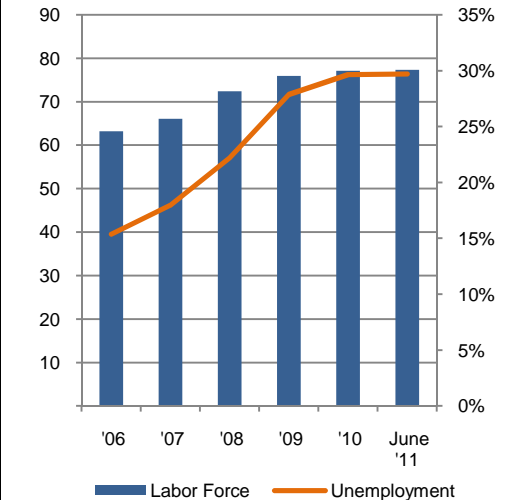
b) Median Household Income by Race and Ethnicity*



13. Labor Force and Unemployment, 2006-11

Labor Force
In thousands

Unemployment Rate

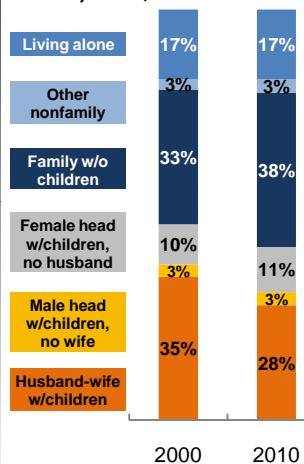


Source: CA Employment Development Department

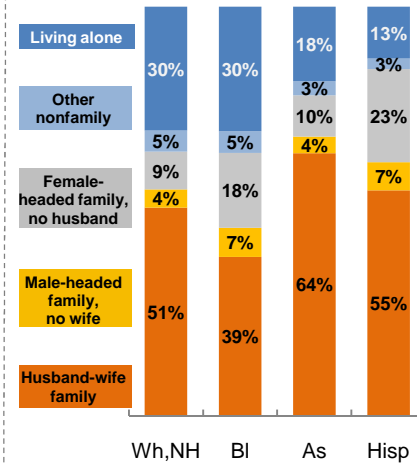
14. Household Type, 2010

% of all households

a) Total, 2000-10

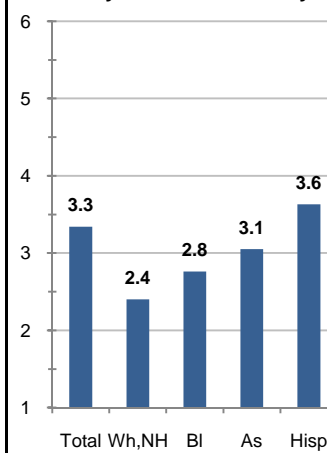


b) By Race and Ethnicity,* 2010

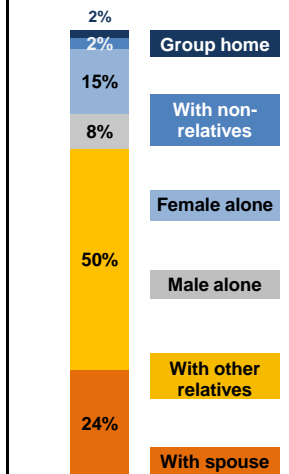


15. Average Household Size, 2010

By Race and Ethnicity*



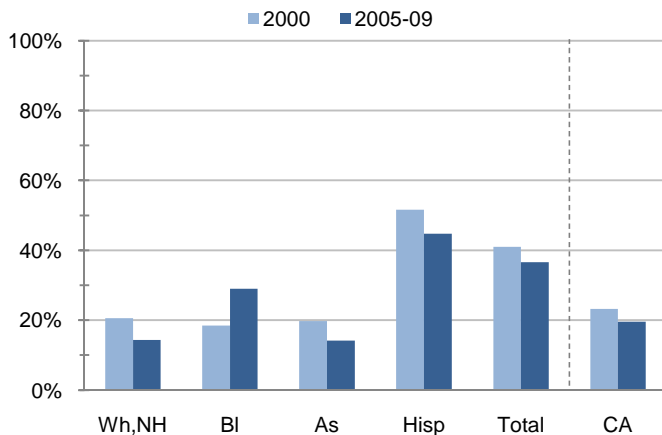
16. Living Arrangements Age 65+, 2005-09



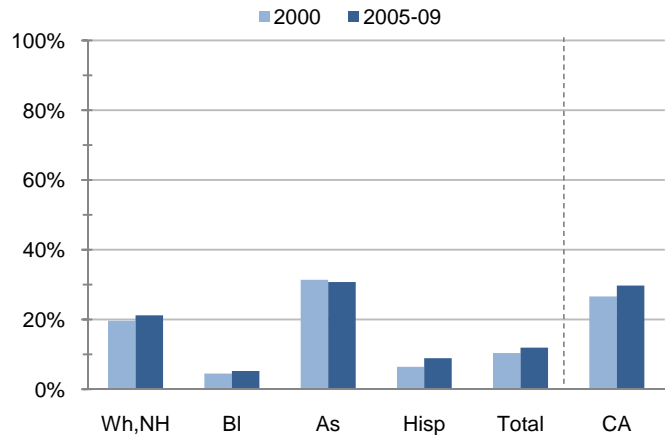
Source: ACS 2005-09

17. Educational Attainment for the Population Age 25 and Over by Race and Ethnicity*

a) % of Adults Who Did Not Complete High School



b) % of Adults Who Attained a BA or Higher



Source: Census 2000, ACS 2005-09

*Wh,NH=White,Non-Hispanic; BI=Black,Hispanic Inclusive; As=Asian,Hispanic Inclusive; Hisp=Hispanic(Includes all races); CA=California Total

Note: In the American Community Survey and for Census variables other than population, Hispanic origin is not broken out for all races.

	White, Non- Hispanic	Black, Non- Hispanic	Asian, Non- Hispanic	Other, Non- Hispanic	Detail for Other, Non-Hispanic				Hispanic or Latino	Total Population
					American Indian & Alaska Native	Native Hawaiian & Pacific Islander	Some Other Race	Two or More Races		
A. Total Population										
2000 Total	28,768	5,148	2,446	3,182	1,736	75	97	1,274	102,817	142,361
2000 % of Total	20.2%	3.6%	1.7%	2.2%	1.2%	0.1%	0.1%	0.9%	72.2%	100.0%
2010 Total	23,927	5,114	2,201	3,015	1,642	87	189	1,097	140,271	174,528
2010 % of Total	13.7%	2.9%	1.3%	1.7%	0.9%	0.0%	0.1%	0.6%	80.4%	100.0%
B. Population in Major Age Groups by Race and Ethnicity										
2000										
0-19	6,255	767	660	1,240	683	27	41	489	40,292	49,214
20-64	16,767	4,063	1,549	1,653	914	44	51	644	54,810	78,842
65+	5,746	318	237	289	139	4	5	141	7,715	14,305
85+	611	40	46	25	16	0	0	9	491	1,213
2010										
0-19	4,296	545	491	1,053	553	13	53	434	50,565	56,950
20-64	14,539	4,261	1,437	1,659	928	64	125	542	77,530	99,426
65+	5,092	308	273	303	161	10	11	121	12,176	18,152
85+	646	42	23	22	12	1	0	9	1,272	2,005
C. Age Mix for Each Racial and Ethnic Group										
2000										
0-19	21.7%	14.9%	27.0%	39.0%	39.3%	36.0%	42.3%	38.4%	39.2%	34.6%
20-64	58.3%	78.9%	63.3%	51.9%	52.6%	58.7%	52.6%	50.5%	53.3%	55.4%
65+	20.0%	6.2%	9.7%	9.1%	8.0%	5.3%	5.2%	11.1%	7.5%	10.0%
85+	2.1%	0.8%	1.9%	0.8%	0.9%	0.0%	0.0%	0.7%	0.5%	0.9%
2010										
0-19	18.0%	10.7%	22.3%	34.9%	33.7%	14.9%	28.0%	39.6%	36.0%	32.6%
20-64	60.8%	83.3%	65.3%	55.0%	56.5%	73.6%	66.1%	49.4%	55.3%	57.0%
65+	21.3%	6.0%	12.4%	10.0%	9.8%	11.5%	5.8%	11.0%	8.7%	10.4%
85+	2.7%	0.8%	1.0%	0.7%	0.7%	1.1%	0.0%	0.8%	0.9%	1.1%
D. Racial and Ethnic Mix for Each Age Group										
2000										
0-19	12.7%	1.6%	1.3%	2.5%	1.4%	0.1%	0.1%	1.0%	81.9%	100.0%
20-64	21.3%	5.2%	2.0%	2.1%	1.2%	0.1%	0.1%	0.8%	69.5%	100.0%
65+	40.2%	2.2%	1.7%	2.0%	1.0%	0.0%	0.0%	1.0%	53.9%	100.0%
85+	50.4%	3.3%	3.8%	2.1%	1.3%	0.0%	0.0%	0.7%	40.5%	100.0%
2010										
0-19	7.5%	1.0%	0.9%	1.8%	1.0%	0.0%	0.1%	0.8%	88.8%	100.0%
20-64	14.6%	4.3%	1.4%	1.7%	0.9%	0.1%	0.1%	0.5%	78.0%	100.0%
65+	28.1%	1.7%	1.5%	1.7%	0.9%	0.1%	0.1%	0.7%	67.1%	100.0%
85+	32.2%	2.1%	1.1%	1.1%	0.6%	0.0%	0.0%	0.4%	63.4%	100.0%
E. Population Growth										
2000-10, Change										
0-19	-1,959	-222	-169	-187	-130	-14	12	-55	10,273	7,736
20-64	-2,228	198	-112	6	14	20	74	-102	22,720	20,584
65+	-654	-10	36	14	22	6	6	-20	4,461	3,847
85+	35	2	-23	-3	-4	1	0	0	781	792
Total	-4,841	-34	-245	-167	-94	12	92	-177	37,454	32,167
2000-10, % Change										
0-19	-31.3%	-28.9%	-25.6%	-15.1%	-19.0%	-51.9%	29.3%	-11.2%	25.5%	15.7%
20-64	-13.3%	4.9%	-7.2%	0.4%	1.5%	45.5%	145.1%	-15.8%	41.5%	26.1%
65+	-11.4%	-3.1%	15.2%	4.8%	15.8%	150.0%	120.0%	-14.2%	57.8%	26.9%
85+	5.7%	5.0%	-50.0%	-12.0%	-25.0%	N/A	N/A	0.0%	159.1%	65.3%
Total	-16.8%	-0.7%	-10.0%	-5.2%	-5.4%	16.0%	94.8%	-13.9%	36.4%	22.6%

Source: US Census 2010, 2000

	White, Non- Hispanic	Black, Non- Hispanic	Asian, Non- Hispanic	Other, Non- Hispanic	Detail for Other, Non-Hispanic				Hispanic or Latino	Total Population 2010
					American Indian & Alaska Native	Native Hawaiian & Pacific Islander	Some Other Race	Two or More Races		
F. Population by Library-Defined Age Groups, 2010										
0-5	1,231	146	124	322	173	4	14	131	14,536	16,359
6-10	1,049	118	129	251	134	1	13	103	12,394	13,941
11-13	648	72	92	173	96	1	8	68	7,707	8,692
14-18	1,147	156	130	273	131	5	13	124	13,328	15,034
19-32	3,697	1,660	330	566	311	35	50	170	29,461	35,714
33-45	3,655	1,543	509	487	257	15	46	169	23,638	29,832
46-64	7,408	1,111	614	640	379	16	34	211	27,031	36,804
65-84	4,446	266	250	281	149	9	11	112	10,904	16,147
85+	646	42	23	22	12	1	0	9	1,272	2,005
Total	23,927	5,114	2,201	3,015	1,642	87	189	1,097	140,271	174,528
G. Population by 5-Year Age Brackets, 2010										
0-4	1,010	125	94	259	140	3	10	106	12,038	13,526
5-9	1,050	117	126	262	138	1	14	109	12,286	13,841
10-14	1,095	120	157	281	153	3	17	108	12,883	14,536
15-19	1,141	183	114	251	122	6	12	111	13,358	15,047
20-24	1,217	575	98	200	121	7	13	59	11,098	13,188
25-29	1,408	647	125	218	113	18	16	71	10,113	12,511
30-34	1,393	665	158	196	91	13	21	71	9,274	11,686
35-39	1,304	638	194	170	98	7	11	54	9,068	11,374
40-44	1,477	534	206	209	110	2	25	72	9,141	11,567
45-49	1,813	470	191	187	114	6	13	54	8,752	11,413
50-54	2,073	365	172	175	96	3	11	65	8,299	11,084
55-59	2,016	222	153	146	80	5	7	54	6,699	9,236
60-64	1,838	145	140	158	105	3	8	42	5,086	7,367
65-69	1,496	108	75	119	67	1	5	46	3,573	5,371
70-74	1,189	73	80	81	52	3	1	25	2,997	4,420
75-79	939	49	60	44	18	2	3	21	2,526	3,618
80-84	822	36	35	37	12	3	2	20	1,808	2,738
85-89	427	26	12	11	6	0	0	5	957	1,433
90-94	174	10	6	8	5	1	0	2	241	439
95-99	38	6	5	2	1	0	0	1	62	113
100+	7	0	0	1	0	0	0	1	12	20
Total	23,927	5,114	2,201	3,015	1,642	87	189	1,097	140,271	174,528
H. Median Age, 2000-10										
	White, Non- Hispanic	Black, Hispanic Inclusive	Asian, Hispanic Inclusive		American Indian & Alaska Native, Hispanic Inclusive	Native Hawaiian & Pacific Islander, Hispanic Inclusive	Some Other Race, Hispanic Inclusive	Two or More Races, Hispanic Inclusive	Hispanic or Latino	Total Population
2000	43.0	33.1	35.0		28.1	28.5	26.9	26.7	27.3	31.0
2010	47.6	34.9	38.3		30.2	27.3	28.0	25.2	29.2	31.9

Source: US Census 2010, 2000

Note: In the American Community Survey and for Census variables other than population, Hispanic origin is not broken out for all races.

I. Income Distribution, 2005-09			J. Median Household Income by Race and Ethnicity, 2005-09 (\$2009)							
Range (ths)	Households	% of Total	White, NH	Black	Asian	Hispanic	Total	% of CA	California	
<\$10	4,379	9.4%	\$52,299	\$33,162	\$71,000	\$34,086	\$37,595	62.3%	\$60,392	
\$10 to <\$25	11,280	24.3%								
\$25 to <\$50	12,441	26.8%								
\$50 to <\$75	7,660	16.5%								
\$75 to <\$100	4,495	9.7%								
\$100 to <\$150	4,145	8.9%								
\$150+	2,005	4.3%								
K. Household Type, 2000-10			2000	2000,%	2010	2010,%				
Total households			39,433	100.0%	49,126	100.0%				
Family Households			31,731	80.5%	39,170	79.7%				
Husband-wife w/children			13,746	34.9%	13,747	28.0%				
Female head, no husband, w/children			3,883	9.8%	5,387	11.0%				
Male head, no wife, w/children			1,180	3.0%	1,572	3.2%				
Without children			12,922	32.8%	18,464	37.6%				
Nonfamily households			7,702	19.5%	9,956	20.3%				
Living alone			6,699	17.0%	8,368	17.0%				
Other nonfamily			1,003	2.5%	1,588	3.2%	Source: US Census 2010, 2000			
L. Household Type by Race and Ethnicity, 2010			White, NH	Black	Asian	Hispanic	Total			
Total households			10,350	954	911	36,246	49,126			
Husband-wife family			50.9%	38.9%	64.2%	55.1%	53.8%			
Family with male head, no wife			4.5%	7.1%	4.1%	6.9%	6.4%			
Family with female head, no husband			9.2%	18.2%	10.1%	22.8%	19.6%			
Living alone			30.3%	30.4%	18.2%	12.6%	17.0%	Source: US		
Other nonfamily			5.1%	5.3%	3.4%	2.6%	3.2%	Census 2010		
M. Poverty, 2005-09			Percentage of families and people whose income in the past 12 months is below the poverty level						California	
All families									19.2%	9.8%
Families w/ related children under 18 years									24.7%	14.5%
Families w/ female householder, no husband present									38.9%	24.2%
Families w/ female householder, no husband present w/ related children under 18 years									45.3%	32.2%
All people									21.2%	13.2%
Under 18 years									27.2%	18.3%
18 to 64 years									19.3%	11.9%
65 years and over									13.4%	8.4%
N. Educational Attainment, 2005-09			% at each level of educational attainment							
			White, NH	Black	Asian	Hispanic	Total			
Population 25 years and over			19,767	3,827	2,155	65,606	92,903			
Less than high school			14.3%	29.0%	14.2%	44.7%	36.6%			
High school graduate (includes equivalency)			31.0%	37.4%	27.0%	21.1%	24.3%			
Some college or associate's degree			33.4%	28.4%	28.2%	25.2%	27.1%			
Bachelor's degree or higher			21.2%	5.3%	30.7%	8.9%	11.9%			
O. Employment Status, 2010-11			2010	June 2011						
In civilian labor force			77,100	77,300						
Employed			54,200	54,300						
Unemployed, % of labor force			29.6%	29.7%	Source: CA Employment Development Department					
P. Occupation, 2005-09			Estimate		Percent					
Civilian employed population, 16 yrs & over			54,276		100.0%					
Management, professional, and related occupations			13,729		25.3%					
Service occupations			11,577		21.3%					
Sales and office occupations			14,637		27.0%					
Farming, fishing, and forestry occupations			3,164		5.8%					
Construction, extraction, maintenance, and repair occupations			4,856		8.9%					
Production, transportation, and material moving occupations			6,313		11.6%					
Q. Class of Worker, 2005-09			Estimate		Percent					
Civilian employed population, 16 yrs & over			54,276		100.0%					
Private, for profit, wage and salary employee			31,534		58.1%					
Private, not for profit, wage and salary employee			2,500		4.6%					
Private, for profit, wage and salary self-employed in own business			1,638		3.0%					
Government workers			14,512		26.7%					
Self-employed in own not incorporated business			3,697		6.8%					
Unpaid family workers in family business			395		0.7%					

Source: American Community Survey 2005-09, unless otherwise stated

ProfileTemplate 9-8-11.xlsr 9/11/2011 15:44

Note: In the American Community Survey and for US Census variables other than population, Hispanic origin is not broken out for all races. White, NH represents White, Non-Hispanic. Black and Asian are Hispanic inclusive.