

Highlights



**Population Growth:** The population of Mendocino County grew by 2% over the past decade to 87,000, far slower than the statewide rate of 10%. The greatest growth occurred in the Hispanic population (5,000), and the white, non-Hispanic population declined (-4,000).

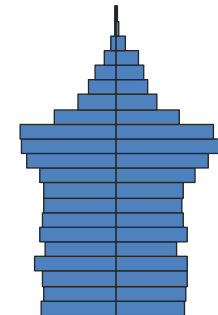
**Diversity:** The racial and ethnic composition of Mendocino County shifted somewhat, although the area remains predominantly white, non-Hispanic. The Hispanic share of population increased from 17% to 22% of total, while the white, non-Hispanic share declined from 75% to 69%. Within the population of young people (age 0-19), the white, non-Hispanic share declined from 62% to 50%, and the Hispanic share increased from 26% to 38%.

**Age Structure:** Mendocino County is older than the state overall, and the age structure shifted upward over the past decade. Median age increased from 39 to 42, well above the statewide median of 35. The share of the population age 65+ is 15%, compared with 11% in California overall. The number of young people declined by almost 3,000.

**Households:** Traditional families—married couples with children—make up only 16% of all households here, compared with 23% statewide. Thirty percent of households are single-person, compared with 23% in the state overall.

**Income:** Median household income is \$46,000, 72% of the statewide median of \$60,000. Twenty-nine percent of Mendocino County residents have incomes of less than \$25,000, compared with 20% of Californians.

**Foreign Born:** The foreign-born population accounts for only 11% of the total population, compared with 27% statewide.



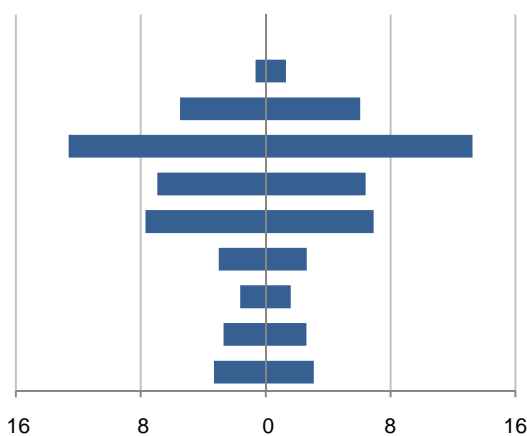
Population by Age

*This demographic profile is part of a series of library jurisdiction profiles prepared for the California State Library by the Stanford Center on Longevity. The project, "Understanding California's Shifting Demographics," was supported in whole by the U.S. Institute of Museum and Library Services under the provisions of the Library Services and Technology Act, administered in California by the State Librarian. The opinions expressed herein do not necessarily reflect the position or policy of the U.S. Institute of Museum and Library Services or the California State Library, and no official endorsement by the U.S. Institute of Museum and Library Services or the California State Library should be inferred.*

Key Indicators			
		2000	2010
<b>Population Growth</b>			
	Total population	86,265	87,841
	10-year growth	7.4%	1.8%
<b>Diversity</b>			
	% Hispanic	16.5%	22.2%
	% Asian, non-Hispanic	1.2%	1.6%
	% White, non-Hispanic	74.9%	68.6%
	% Black, non-Hispanic	0.5%	0.6%
<b>Aging</b>			
	% 65+	13.6%	15.4%
	Median age	38.9	41.5
<b>Households</b>			
	% Married couple with children	21.8%	15.9%
	% Living alone	27.0%	29.7%

1. Population by Library-Defined Age Group, 2010

In thousands; males on left, females on right

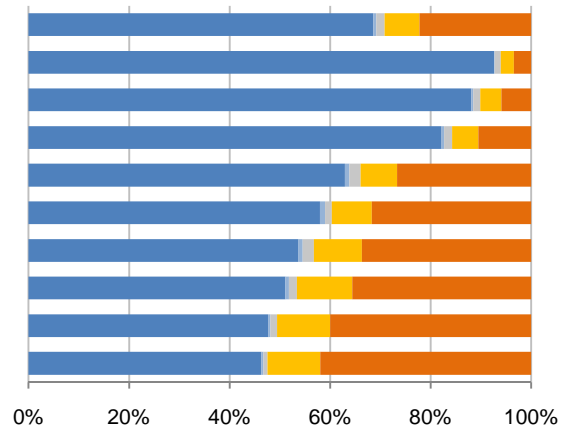


2. Race and Ethnicity by Library-Defined Age Group, 2010

White, NH Black, NH Asian, NH Other, NH Hispanic

Age group

- Total
- 85+, Oldest
- 65 to 84, Older adults
- 46 to 64, Midlife
- 33 to 45, Adult
- 19 to 32, Young
- 14 to 18, Teens
- 11 to 13, Tweens
- 6 to 10, School age
- 0 to 5, Infants/toddlers

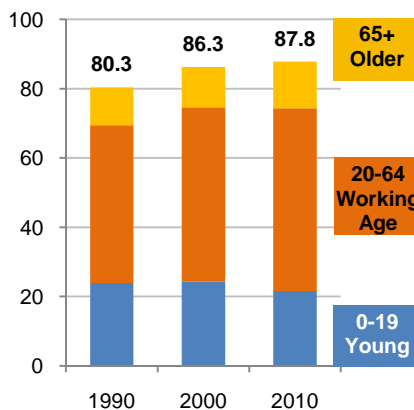


3. Population Growth by Library-Defined Age Group, 2000-10

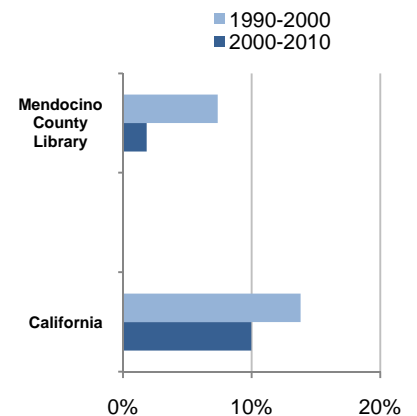
	2010	Change	% Change
<b>Total</b>	87,841	1,576	1.8%
<b>85+</b>	1,954	471	31.8%
<b>65 to 84</b>	11,539	1,313	12.8%
<b>46 to 64</b>	25,863	3,885	17.7%
<b>33 to 45</b>	13,323	-2,528	-15.9%
<b>19 to 32</b>	14,597	1,139	8.5%
<b>14 to 18</b>	5,644	-1,151	-16.9%
<b>11 to 13</b>	3,238	-807	-20.0%
<b>6 to 10</b>	5,296	-819	-13.4%
<b>0 to 5</b>	6,387	73	1.2%

4. Population Total, 1990-2010

In thousands



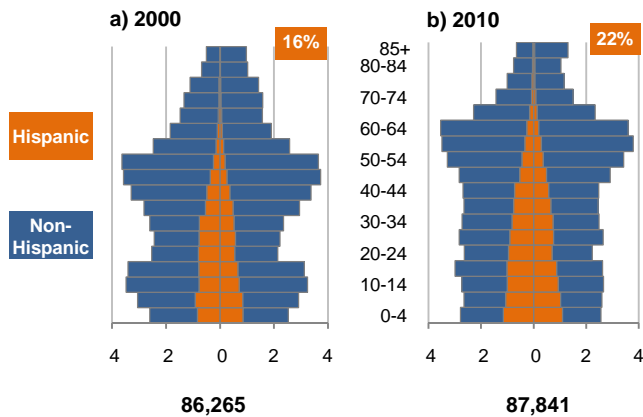
5. 10-Year Population Change



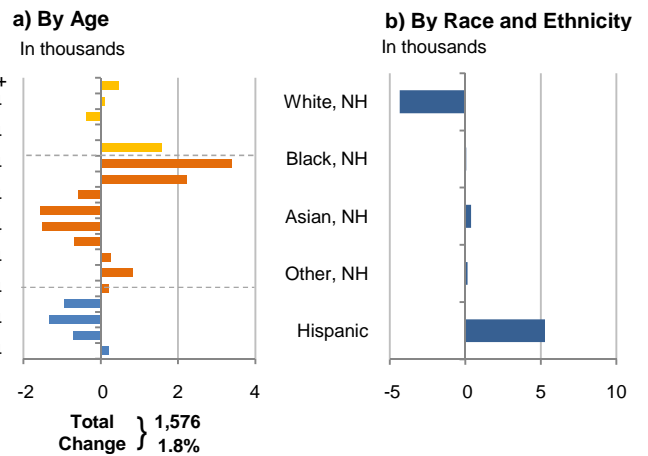
Source: US Census 2010, 2000, or 1990

6. Population by 5-Year Age Brackets

In thousands; males on left, females on right

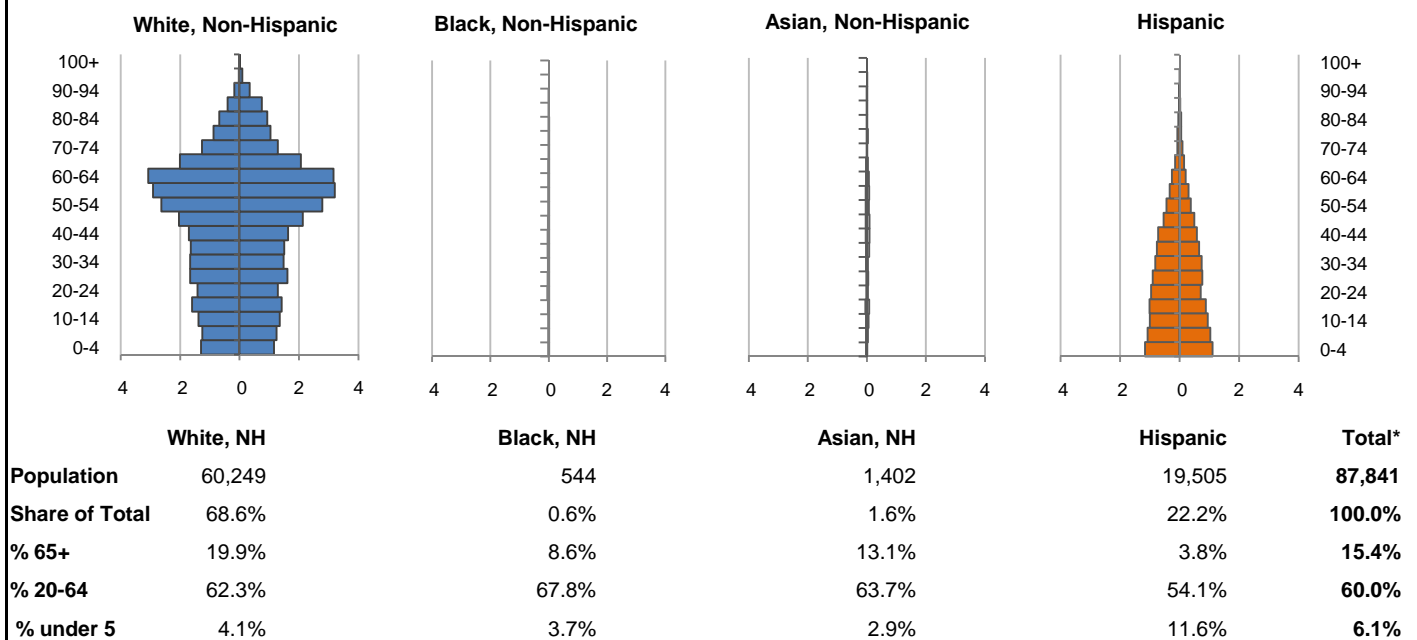


7. 10-Year Change in Population, 2000-10

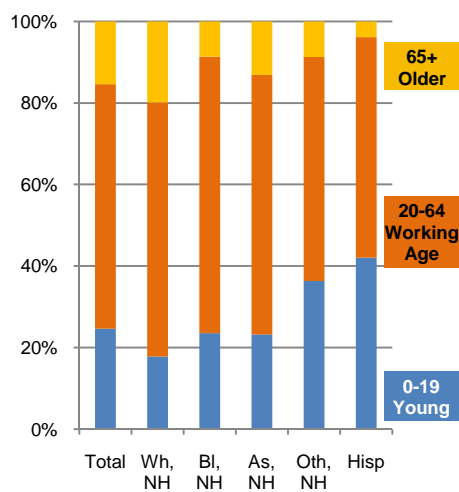


8. Population by Age, Race, and Ethnicity, 2010

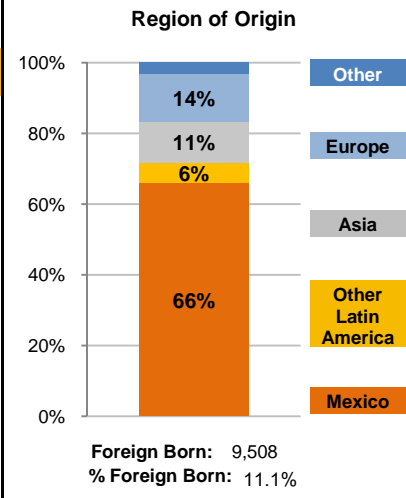
In thousands; males on left, females on right



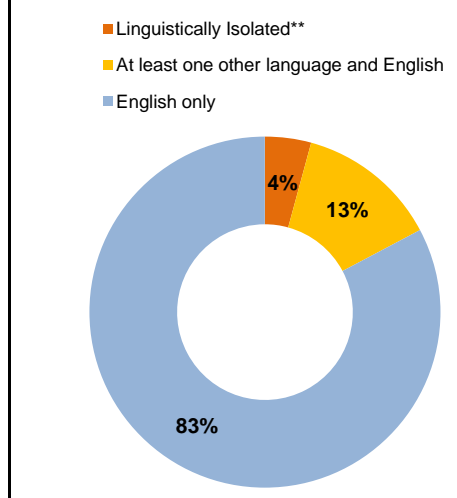
9. Age Mix by Race and Ethnicity, 2010



10. Foreign Born, 2005-09



11. Household Language, 2005-09

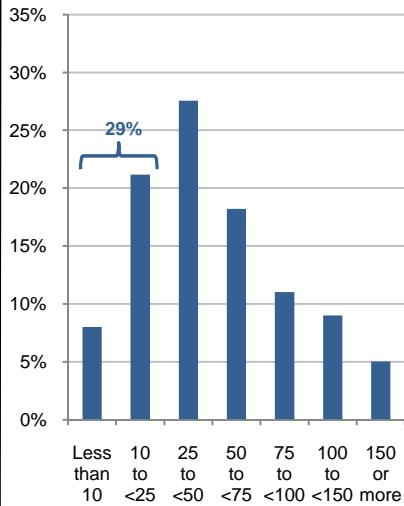


Wh=White; Bl=Black; As=Asian; Oth=Other Race or Two or More Races; Hisp=Hispanic; NH=Non-Hispanic; ACS=American Community Survey 2005-09  
 \*See pages 5-6 for detail on Other, Non-Hispanic  
 \*\*Linguistically Isolated = No one in the household age 14 and over speaks English at least "very well"

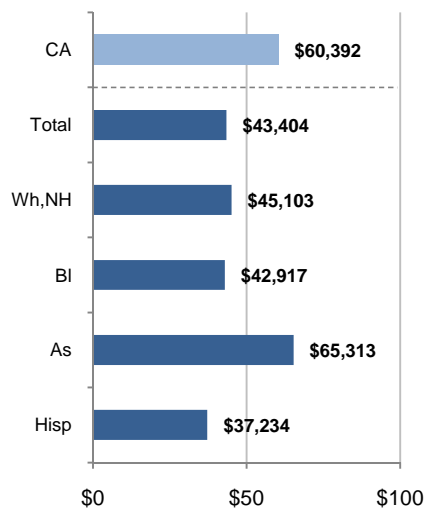
12. Household Income, 2005-09

In thousands of \$ (2009)

a) Income Distribution



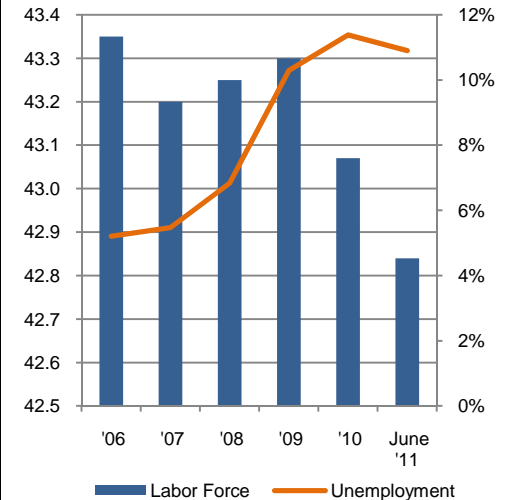
b) Median Household Income by Race and Ethnicity\*



13. Labor Force and Unemployment, 2006-11

Labor Force  
In thousands

Unemployment Rate

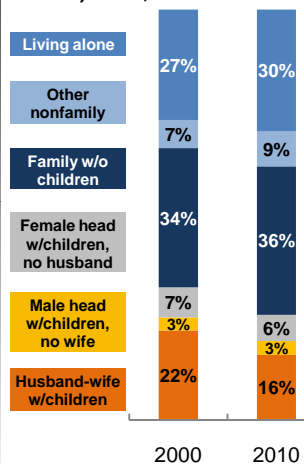


Source: CA Employment Development Department

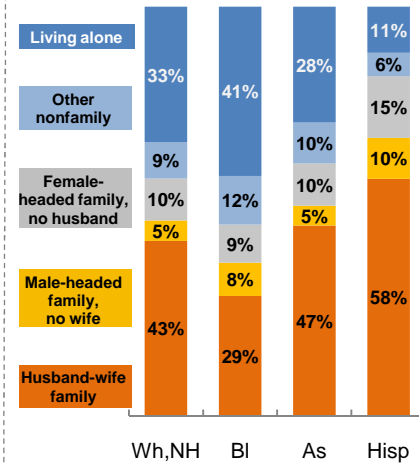
14. Household Type, 2010

% of all households

a) Total, 2000-10

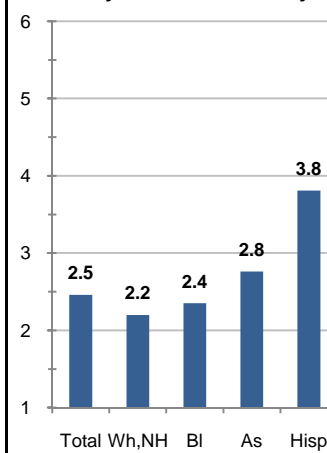


b) By Race and Ethnicity,\* 2010

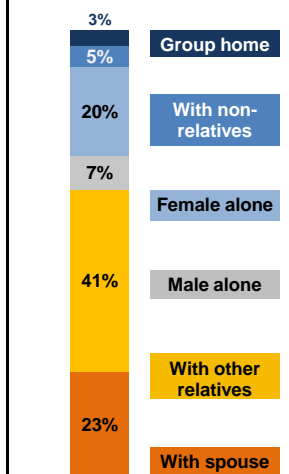


15. Average Household Size, 2010

By Race and Ethnicity\*



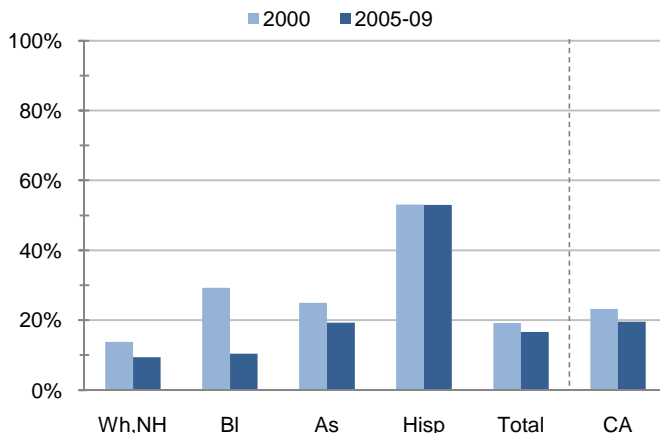
16. Living Arrangements Age 65+, 2005-09



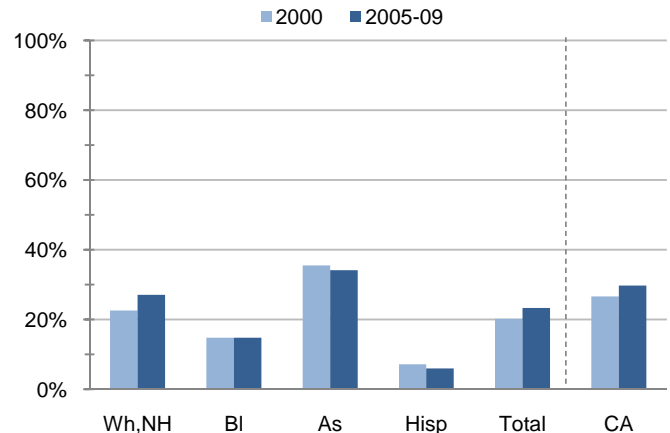
Source: ACS 2005-09

17. Educational Attainment for the Population Age 25 and Over by Race and Ethnicity\*

a) % of Adults Who Did Not Complete High School



b) % of Adults Who Attained a BA or Higher



Source: Census 2000, ACS 2005-09

\*Wh,NH=White,Non-Hispanic; Bl=Black,Hispanic Inclusive; As=Asian,Hispanic Inclusive; Hisp=Hispanic(Includes all races); CA=California Total

Note: In the American Community Survey and for Census variables other than population, Hispanic origin is not broken out for all races.

	White, Non- Hispanic	Black, Non- Hispanic	Asian, Non- Hispanic	Other, Non- Hispanic	Detail for Other, Non-Hispanic				Hispanic or Latino	Total Population
					American Indian & Alaska Native	Native Hawaiian & Pacific Islander	Some Other Race	Two or More Races		
<b>A. Total Population</b>										
<b>2000 Total</b>	64,581	471	1,006	5,994	3,438	107	152	2,297	14,213	86,265
<b>2000 % of Total</b>	74.9%	0.5%	1.2%	6.9%	4.0%	0.1%	0.2%	2.7%	16.5%	100.0%
<b>2010 Total</b>	60,249	544	1,402	6,141	3,486	92	131	2,432	19,505	87,841
<b>2010 % of Total</b>	68.6%	0.6%	1.6%	7.0%	4.0%	0.1%	0.1%	2.8%	22.2%	100.0%
<b>B. Population in Major Age Groups by Race and Ethnicity</b>										
<b>2000</b>										
0-19	15,208	141	265	2,333	1,315	33	42	943	6,434	24,381
20-64	38,601	290	641	3,225	1,881	70	102	1,172	7,418	50,175
65+	10,772	40	100	436	242	4	8	182	361	11,709
85+	1,405	4	6	39	21	0	2	16	29	1,483
<b>2010</b>										
0-19	10,716	128	325	2,232	1,155	20	39	1,018	8,208	21,609
20-64	37,559	369	893	3,371	1,970	65	83	1,253	10,547	52,739
65+	11,974	47	184	538	361	7	9	161	750	13,493
85+	1,810	2	24	51	39	1	0	11	67	1,954
<b>C. Age Mix for Each Racial and Ethnic Group</b>										
<b>2000</b>										
0-19	23.5%	29.9%	26.3%	38.9%	38.2%	30.8%	27.6%	41.1%	45.3%	28.3%
20-64	59.8%	61.6%	63.7%	53.8%	54.7%	65.4%	67.1%	51.0%	52.2%	58.2%
65+	16.7%	8.5%	9.9%	7.3%	7.0%	3.7%	5.3%	7.9%	2.5%	13.6%
85+	2.2%	0.8%	0.6%	0.7%	0.6%	0.0%	1.3%	0.7%	0.2%	1.7%
<b>2010</b>										
0-19	17.8%	23.5%	23.2%	36.3%	33.1%	21.7%	29.8%	41.9%	42.1%	24.6%
20-64	62.3%	67.8%	63.7%	54.9%	56.5%	70.7%	63.4%	51.5%	54.1%	60.0%
65+	19.9%	8.6%	13.1%	8.8%	10.4%	7.6%	6.9%	6.6%	3.8%	15.4%
85+	3.0%	0.4%	1.7%	0.8%	1.1%	1.1%	0.0%	0.5%	0.3%	2.2%
<b>D. Racial and Ethnic Mix for Each Age Group</b>										
<b>2000</b>										
0-19	62.4%	0.6%	1.1%	9.6%	5.4%	0.1%	0.2%	3.9%	26.4%	100.0%
20-64	76.9%	0.6%	1.3%	6.4%	3.7%	0.1%	0.2%	2.3%	14.8%	100.0%
65+	92.0%	0.3%	0.9%	3.7%	2.1%	0.0%	0.1%	1.6%	3.1%	100.0%
85+	94.7%	0.3%	0.4%	2.6%	1.4%	0.0%	0.1%	1.1%	2.0%	100.0%
<b>2010</b>										
0-19	49.6%	0.6%	1.5%	10.3%	5.3%	0.1%	0.2%	4.7%	38.0%	100.0%
20-64	71.2%	0.7%	1.7%	6.4%	3.7%	0.1%	0.2%	2.4%	20.0%	100.0%
65+	88.7%	0.3%	1.4%	4.0%	2.7%	0.1%	0.1%	1.2%	5.6%	100.0%
85+	92.6%	0.1%	1.2%	2.6%	2.0%	0.1%	0.0%	0.6%	3.4%	100.0%
<b>E. Population Growth</b>										
<b>2000-10, Change</b>										
0-19	-4,492	-13	60	-101	-160	-13	-3	75	1,774	-2,772
20-64	-1,042	79	252	146	89	-5	-19	81	3,129	2,564
65+	1,202	7	84	102	119	3	1	-21	389	1,784
85+	405	-2	18	12	18	1	-2	-5	38	471
<b>Total</b>	<b>-4,332</b>	<b>73</b>	<b>396</b>	<b>147</b>	<b>48</b>	<b>-15</b>	<b>-21</b>	<b>135</b>	<b>5,292</b>	<b>1,576</b>
<b>2000-10, % Change</b>										
0-19	-29.5%	-9.2%	22.6%	-4.3%	-12.2%	-39.4%	-7.1%	8.0%	27.6%	-11.4%
20-64	-2.7%	27.2%	39.3%	4.5%	4.7%	-7.1%	-18.6%	6.9%	42.2%	5.1%
65+	11.2%	17.5%	84.0%	23.4%	49.2%	75.0%	12.5%	-11.5%	107.8%	15.2%
85+	28.8%	-50.0%	300.0%	30.8%	85.7%	N/A	-100.0%	-31.3%	131.0%	31.8%
<b>Total</b>	<b>-6.7%</b>	<b>15.5%</b>	<b>39.4%</b>	<b>2.5%</b>	<b>1.4%</b>	<b>-14.0%</b>	<b>-13.8%</b>	<b>5.9%</b>	<b>37.2%</b>	<b>1.8%</b>

Source: US Census 2010, 2000

	White, Non- Hispanic	Black, Non- Hispanic	Asian, Non- Hispanic	Other, Non- Hispanic	Detail for Other, Non-Hispanic				Hispanic or Latino	Total Population 2010
					American Indian & Alaska Native	Native Hawaiian & Pacific Islander	Some Other Race	Two or More Races		
<b>F. Population by Library-Defined Age Groups, 2010</b>										
0-5	2,957	27	52	672	327	5	16	324	2,679	6,387
6-10	2,523	25	72	558	291	5	13	249	2,118	5,296
11-13	1,654	23	52	357	187	3	3	164	1,152	3,238
14-18	3,032	46	124	540	293	5	5	237	1,902	5,644
19-32	8,466	142	195	1,167	669	21	25	452	4,627	14,597
33-45	8,386	115	303	960	567	20	27	346	3,559	13,323
46-64	21,257	119	420	1,349	791	26	33	499	2,718	25,863
65-84	10,164	45	160	487	322	6	9	150	683	11,539
85+	1,810	2	24	51	39	1	0	11	67	1,954
Total	60,249	544	1,402	6,141	3,486	92	131	2,432	19,505	87,841
<b>G. Population by 5-Year Age Brackets, 2010</b>										
0-4	2,459	20	41	566	272	4	14	276	2,261	5,347
5-9	2,502	30	68	558	294	5	11	248	2,101	5,259
10-14	2,734	30	90	583	306	4	7	266	1,953	5,390
15-19	3,021	48	126	525	283	7	7	228	1,893	5,613
20-24	2,701	56	58	395	224	6	7	158	1,664	4,874
25-29	3,274	58	72	413	233	5	9	166	1,668	5,485
30-34	3,154	39	65	397	241	11	9	136	1,564	5,219
35-39	3,149	49	114	366	199	10	12	145	1,419	5,097
40-44	3,338	40	132	365	230	3	11	121	1,296	5,171
45-49	4,169	40	130	397	244	12	8	133	1,023	5,759
50-54	5,421	34	102	344	182	4	11	147	816	6,717
55-59	6,115	28	126	378	220	11	8	139	636	7,283
60-64	6,238	25	94	316	197	3	8	108	461	7,134
65-69	4,072	24	67	170	104	2	7	57	299	4,632
70-74	2,564	8	29	154	106	1	1	46	169	2,924
75-79	1,909	8	43	94	69	0	1	24	124	2,178
80-84	1,619	5	21	69	43	3	0	23	91	1,805
85-89	1,152	1	11	37	29	1	0	7	46	1,247
90-94	518	1	8	12	9	0	0	3	15	554
95-99	125	0	5	2	1	0	0	1	6	138
100+	15	0	0	0	0	0	0	0	0	15
Total	60,249	544	1,402	6,141	3,486	92	131	2,432	19,505	87,841
<b>H. Median Age, 2000-10</b>										
	White, Non- Hispanic	Black, Hispanic Inclusive	Asian, Hispanic Inclusive		American Indian & Alaska Native, Hispanic Inclusive	Native Hawaiian & Pacific Islander, Hispanic Inclusive	Some Other Race, Hispanic Inclusive	Two or More Races, Hispanic Inclusive	Hispanic or Latino	Total Population
<b>2000</b>	43.8	28.8	38.8		25.7	33.3	23.4	23.3	22.6	38.9
<b>2010</b>	49.6	33.1	42.1		30.5	35.5	25.7	21.5	24.7	41.5

Source: US Census 2010, 2000

Note: In the American Community Survey and for Census variables other than population, Hispanic origin is not broken out for all races.

I. Income Distribution, 2005-09			J. Median Household Income by Race and Ethnicity, 2005-09 (\$2009)						
Range (ths)	Households	% of Total	White, NH	Black	Asian	Hispanic	Total	% of CA	California
<\$10	2,724	8.0%	\$45,103	\$42,917	\$65,313	\$37,234	\$43,404	71.9%	\$60,392
\$10 to <\$25	7,186	21.2%							
\$25 to <\$50	9,361	27.6%							
\$50 to <\$75	6,186	18.2%							
\$75 to <\$100	3,741	11.0%							
\$100 to <\$150	3,058	9.0%							
\$150+	1,711	5.0%							
K. Household Type, 2000-10			2000	2000,%	2010	2010,%			
<b>Total households</b>			33,331	100.0%	34,945	100.0%			
Family Households			22,066	66.2%	21,591	61.8%			
Husband-wife w/children			7,263	21.8%	5,557	15.9%			
Female head, no husband, w/children			2,447	7.3%	2,255	6.5%			
Male head, no wife, w/children			1,077	3.2%	1,155	3.3%			
Without children			11,279	33.8%	12,624	36.1%			
Nonfamily households			11,265	33.8%	13,354	38.2%			
Living alone			8,984	27.0%	10,382	29.7%			
Other nonfamily			2,281	6.8%	2,972	8.5%	Source: US Census 2010, 2000		
L. Household Type by Race and Ethnicity, 2010			White, NH	Black	Asian	Hispanic	Total		
<b>Total households</b>			27,633	184	389	4,739	34,945		
Husband-wife family			42.7%	29.3%	46.5%	58.0%	44.2%		
Family with male head, no wife			5.0%	8.2%	4.9%	10.0%	6.1%		
Family with female head, no husband			10.2%	9.2%	10.3%	15.1%	11.5%		
Living alone			33.1%	41.3%	28.3%	11.2%	29.7%	Source: US	
Other nonfamily			8.9%	12.0%	10.0%	5.7%	8.5%	Census 2010	
M. Poverty, 2005-09									
<b>Percentage of families and people whose income in the past 12 months is below the poverty level</b>								California	
All families						11.4%	9.8%		
Families w/ related children under 18 years						19.0%	14.5%		
Families w/ female householder, no husband present						32.6%	24.2%		
Families w/ female householder, no husband present w/ related children under 18 years						39.1%	32.2%		
All people						16.3%	13.2%		
Under 18 years						22.6%	18.3%		
18 to 64 years						15.4%	11.9%		
65 years and over						10.1%	8.4%		
N. Educational Attainment, 2005-09									
			% at each level of educational attainment						
			White, NH	Black	Asian	Hispanic	Total		
<b>Population 25 years and over</b>			45,706	318	1,003	8,292	58,361		
Less than high school			9.4%	10.4%	19.2%	53.0%	16.6%		
High school graduate (includes equivalency)			26.5%	43.7%	26.0%	18.6%	25.8%		
Some college or associate's degree			36.9%	31.1%	20.6%	22.4%	34.3%		
Bachelor's degree or higher			27.1%	14.8%	34.1%	6.0%	23.3%		
O. Employment Status, 2010-11									
			2010	June 2011					
In civilian labor force			43,070	42,840					
Employed			38,170	38,170					
Unemployed, % of labor force			11.4%	10.9%	Source: CA Employment Development Department				
P. Occupation, 2005-09									
					Estimate	Percent			
<b>Civilian employed population, 16 yrs &amp; over</b>					38,188	100.0%			
Management, professional, and related occupations					10,858	28.4%			
Service occupations					7,679	20.1%			
Sales and office occupations					9,548	25.0%			
Farming, fishing, and forestry occupations					1,527	4.0%			
Construction, extraction, maintenance, and repair occupations					4,403	11.5%			
Production, transportation, and material moving occupations					4,173	10.9%			
Q. Class of Worker, 2005-09									
					Estimate	Percent			
<b>Civilian employed population, 16 yrs &amp; over</b>					38,188	100.0%			
Private, for profit, wage and salary employee					20,525	53.7%			
Private, not for profit, wage and salary employee					2,435	6.4%			
Private, for profit, wage and salary self-employed in own business					1,550	4.1%			
Government workers					7,058	18.5%			
Self-employed in own not incorporated business					6,209	16.3%			
Unpaid family workers in family business					411	1.1%			

Source: American Community Survey 2005-09, unless otherwise stated

ProfileTemplate 9-8-11.xlsr 9/12/2011 17:36

Note: In the American Community Survey and for US Census variables other than population, Hispanic origin is not broken out for all races. White, NH represents White, Non-Hispanic. Black and Asian are Hispanic inclusive.