

Highlights



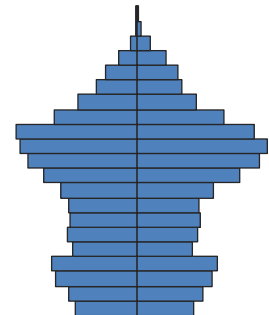
Population Growth: The total population in the Nevada County Library jurisdiction is 99,000, up by 7% since 2000—a lower growth rate than the statewide figure of 10%. Though there was growth overall, Nevada County had a 9% decline in total young people.

Diversity: This jurisdiction is predominantly white, non-Hispanic, though this share of the population declined over the past decade from 90% to 87%, while the Hispanic share increased from 6% to 9% of total.

Age Structure: Nevada is one of the older counties in California with a median age of 48, up from 43 in 2000, compared with the state median age of 35 years old. The share of the population age 65+ increased from 17% to 19% in the past decade, while the portion of the population under age 20 decreased from 25% to 22% of total.

Households: Husband-wife families with children are less common in Nevada County than in the state. Their share decreased from 21% of households in 2000 to 16% in 2010, compared with 23% statewide. Meanwhile, the share of people living alone grew from 23% to 26% of total households.

Education: Educational attainment is higher than in the state overall. Just 7% of adults have not completed high school, compared with 20% of adults statewide, and 32% of adults have received a Bachelor’s degree or higher, compared with 30% statewide.



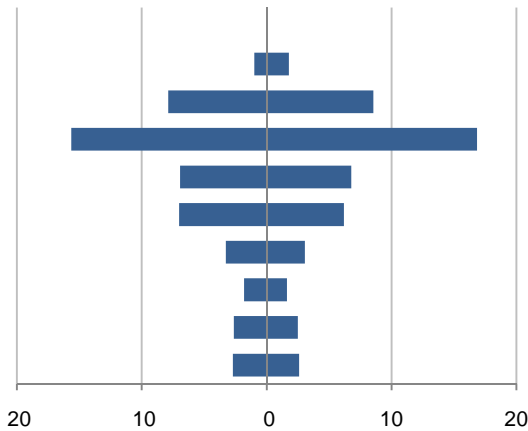
Population by Age

This demographic profile is part of a series of library jurisdiction profiles prepared for the California State Library by the Stanford Center on Longevity. The project, "Understanding California's Shifting Demographics," was supported in whole by the U.S. Institute of Museum and Library Services under the provisions of the Library Services and Technology Act, administered in California by the State Librarian. The opinions expressed herein do not necessarily reflect the position or policy of the U.S. Institute of Museum and Library Services or the California State Library, and no official endorsement by the U.S. Institute of Museum and Library Services or the California State Library should be inferred.

Key Indicators			
		2000	2010
Population Growth			
	Total population	92,033	98,764
	10-year growth	17.2%	7.3%
Diversity			
	% Hispanic	5.7%	8.5%
	% Asian, non-Hispanic	0.8%	1.1%
	% White, non-Hispanic	90.3%	86.5%
	% Black, non-Hispanic	0.3%	0.3%
Aging			
	% 65+	17.4%	19.4%
	Median age	43.1	47.6
Households			
	% Married couple with children	21.3%	16.2%
	% Living alone	22.8%	26.3%

1. Population by Library-Defined Age Group, 2010

In thousands; males on left, females on right

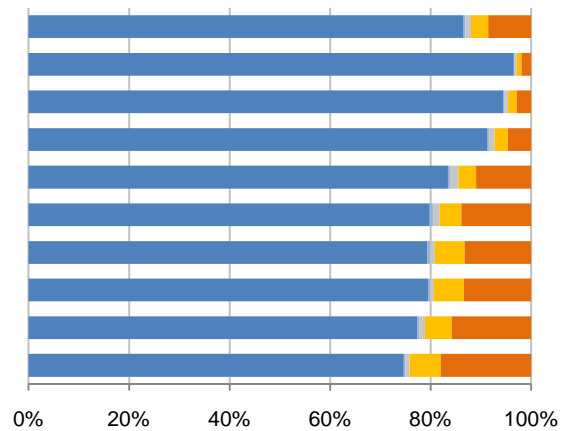


2. Race and Ethnicity by Library-Defined Age Group, 2010

Legend: White, NH (blue); Black, NH (light blue); Asian, NH (grey); Other, NH (yellow); Hispanic (orange)

Age group

- Total
- 85+, Oldest
- 65 to 84, Older adults
- 46 to 64, Midlife
- 33 to 45, Adult
- 19 to 32, Young
- 14 to 18, Teens
- 11 to 13, Tweens
- 6 to 10, School age
- 0 to 5, Infants/toddlers

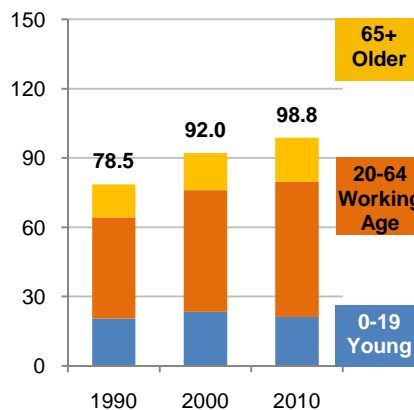


3. Population Growth by Library-Defined Age Group, 2000-10

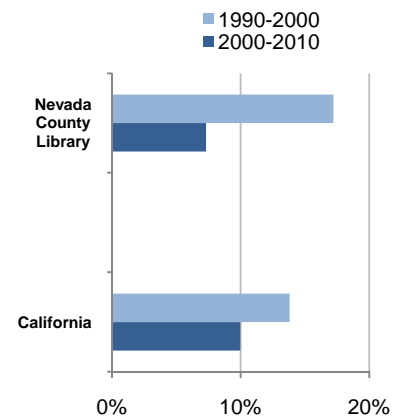
	2010	Change	% Change
Total	98,764	6,731	7.3%
85+	2,759	1,003	57.1%
65 to 84	16,415	2,122	14.8%
46 to 64	32,476	7,348	29.2%
33 to 45	13,714	-4,081	-22.9%
19 to 32	13,182	2,536	23.8%
14 to 18	6,342	-516	-7.5%
11 to 13	3,444	-693	-16.8%
6 to 10	5,125	-973	-16.0%
0 to 5	5,307	-15	-0.3%

4. Population Total, 1990-2010

In thousands



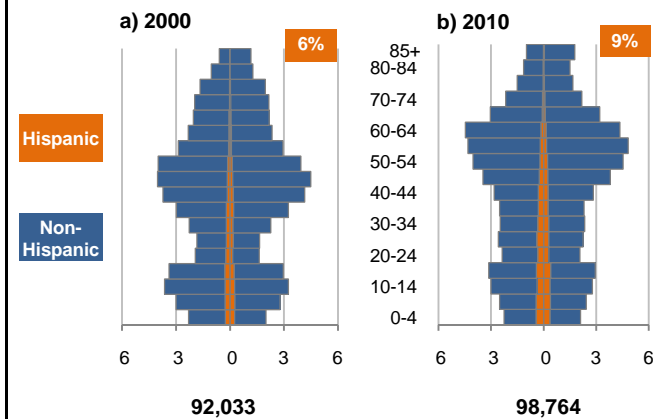
5. 10-Year Population Change



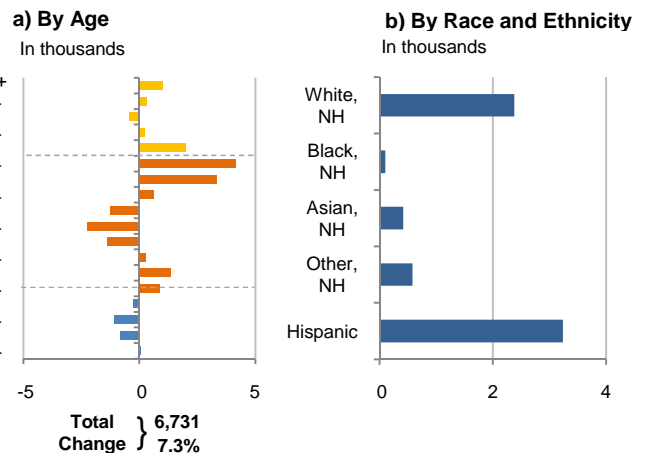
Source: US Census 2010, 2000, or 1990

6. Population by 5-Year Age Brackets

In thousands; males on left, females on right

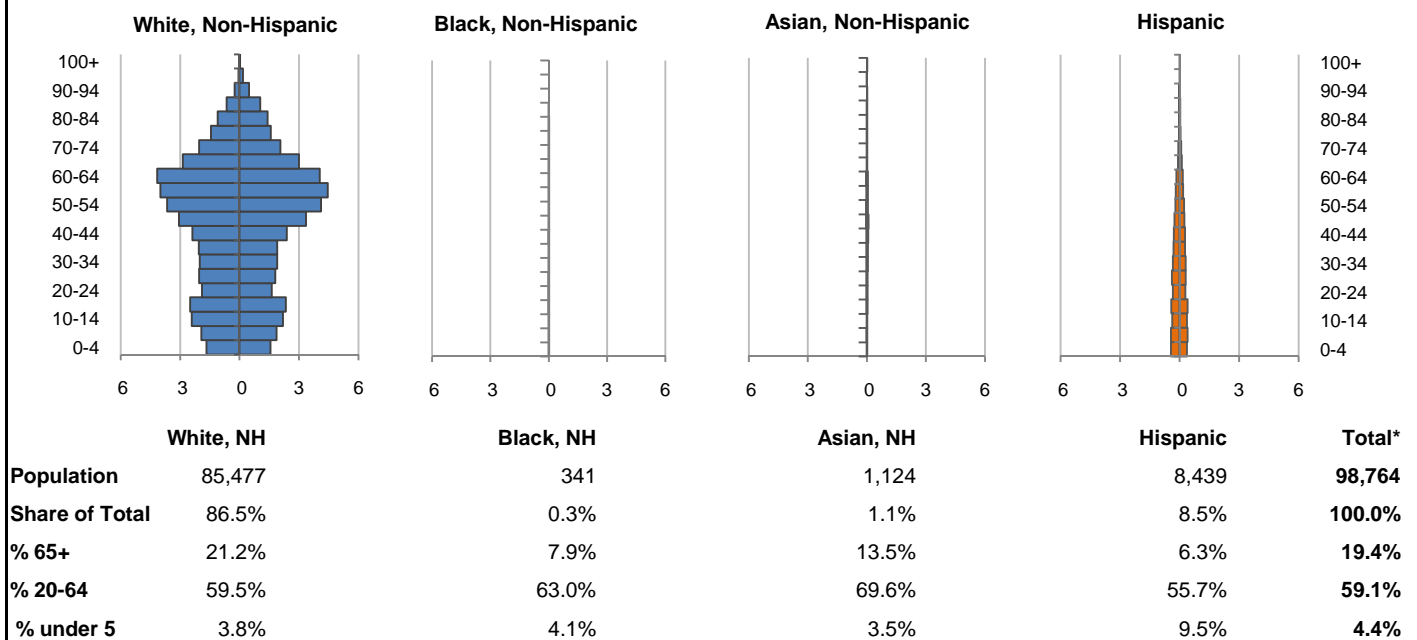


7. 10-Year Change in Population, 2000-10

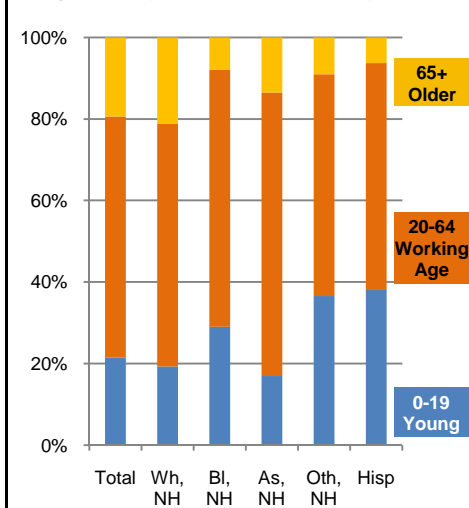


8. Population by Age, Race, and Ethnicity, 2010

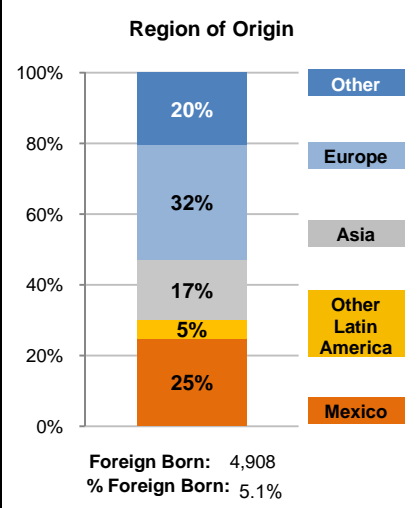
In thousands; males on left, females on right



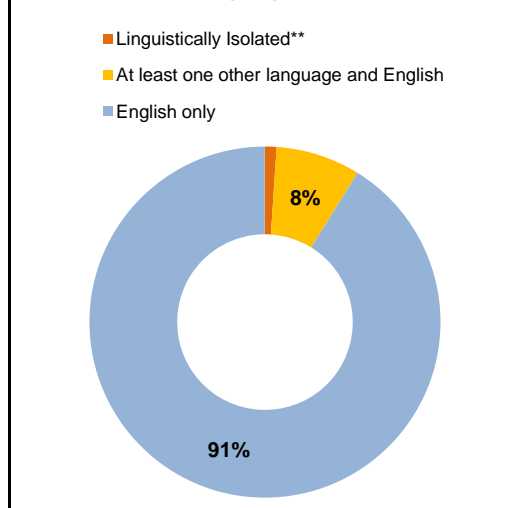
9. Age Mix by Race and Ethnicity, 2010



10. Foreign Born, 2005-09



11. Household Language, 2005-09

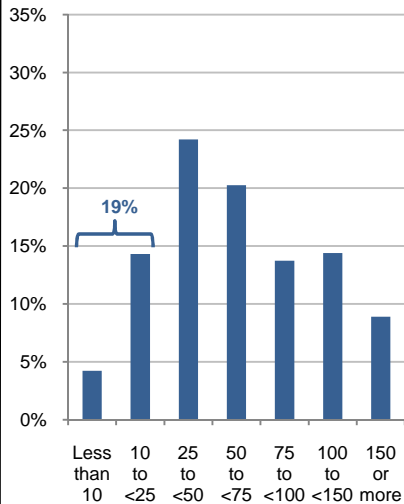


Wh=White; Bl=Black; As=Asian; Oth=Other Race or Two or More Races; Hisp=Hispanic; NH=Non-Hispanic; ACS=American Community Survey 2005-09
 *See pages 5-6 for detail on Other, Non-Hispanic
 **Linguistically Isolated = No one in the household age 14 and over speaks English at least "very well"

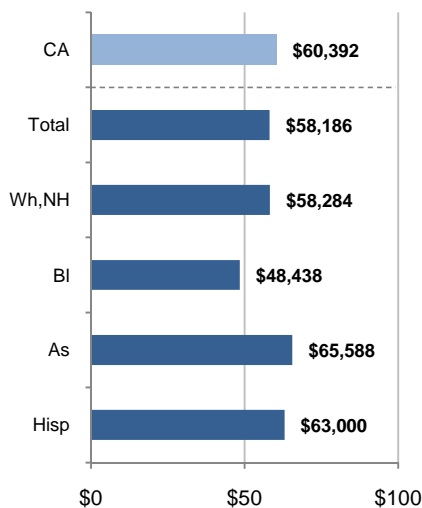
12. Household Income, 2005-09

In thousands of \$ (2009)

a) Income Distribution



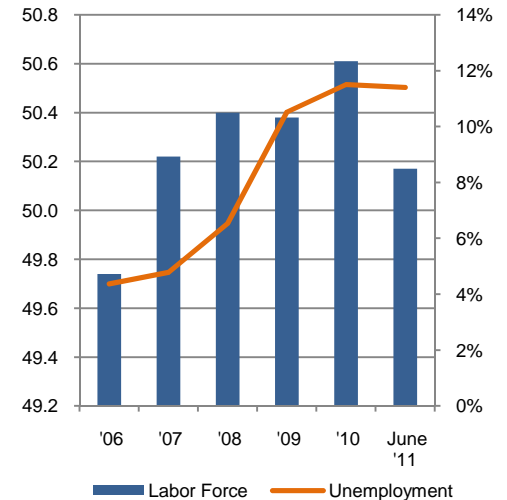
b) Median Household Income by Race and Ethnicity*



13. Labor Force and Unemployment, 2006-11

Labor Force In thousands

Unemployment Rate

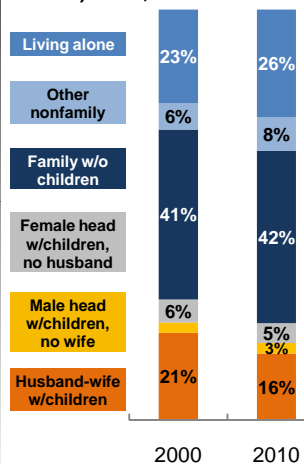


Source: CA Employment Development Department

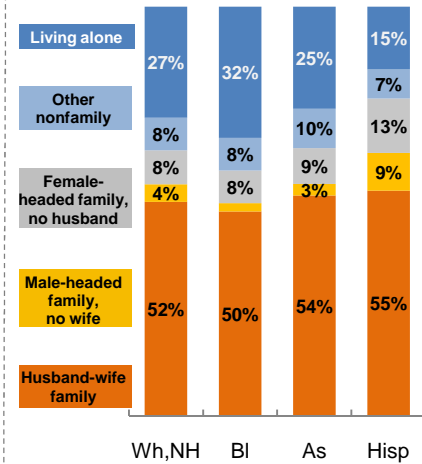
14. Household Type, 2010

% of all households

a) Total, 2000-10

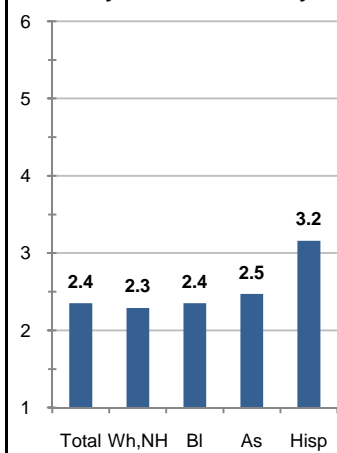


b) By Race and Ethnicity,* 2010

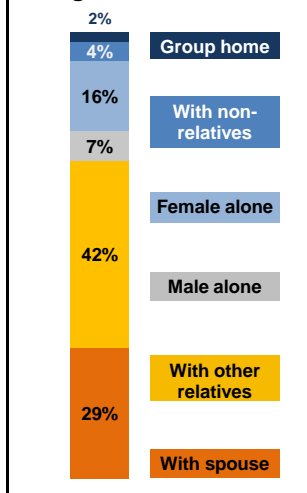


15. Average Household Size, 2010

By Race and Ethnicity*



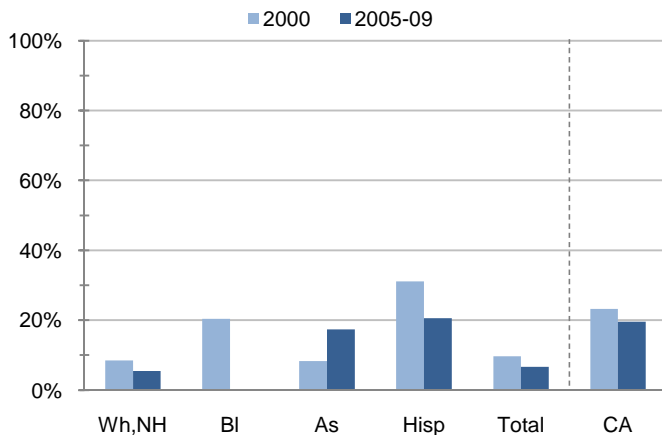
16. Living Arrangements Age 65+, 2005-09



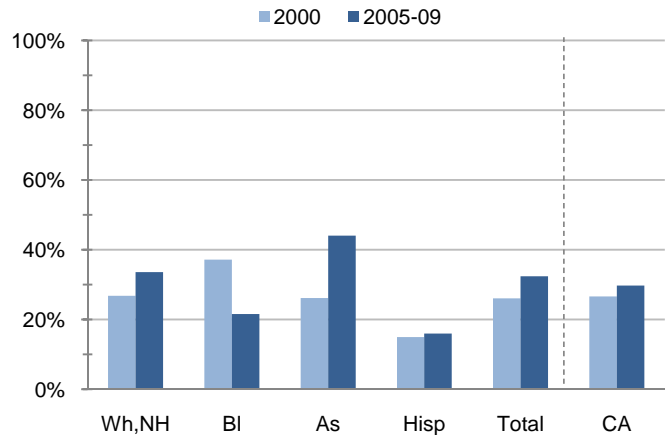
Source: ACS 2005-09

17. Educational Attainment for the Population Age 25 and Over by Race and Ethnicity*

a) % of Adults Who Did Not Complete High School



b) % of Adults Who Attained a BA or Higher



Source: Census 2000, ACS 2005-09

*Wh,NH=White,Non-Hispanic; BI=Black,Hispanic Inclusive; As=Asian,Hispanic Inclusive; Hisp=Hispanic(Includes all races); CA=California Total

Note: In the American Community Survey and for Census variables other than population, Hispanic origin is not broken out for all races.

	White, Non- Hispanic	Black, Non- Hispanic	Asian, Non- Hispanic	Other, Non- Hispanic	Detail for Other, Non-Hispanic				Hispanic or Latino	Total Population
					American Indian & Alaska Native	Native Hawaiian & Pacific Islander	Some Other Race	Two or More Races		
A. Total Population										
2000 Total	83,098	234	702	2,798	663	70	175	1,890	5,201	92,033
2000 % of Total	90.3%	0.3%	0.8%	3.0%	0.7%	0.1%	0.2%	2.1%	5.7%	100.0%
2010 Total	85,477	341	1,124	3,383	793	96	122	2,372	8,439	98,764
2010 % of Total	86.5%	0.3%	1.1%	3.4%	0.8%	0.1%	0.1%	2.4%	8.5%	100.0%
B. Population in Major Age Groups by Race and Ethnicity										
2000										
0-19	19,915	108	149	1,047	205	18	77	747	2,125	23,344
20-64	47,739	111	465	1,537	414	50	89	984	2,788	52,640
65+	15,444	15	88	214	44	2	9	159	288	16,049
85+	1,713	1	3	18	2	0	0	16	21	1,756
2010										
0-19	16,470	99	190	1,236	192	27	39	978	3,209	21,204
20-64	50,846	215	782	1,842	503	58	71	1,210	4,701	58,386
65+	18,161	27	152	305	98	11	12	184	529	19,174
85+	2,663	1	16	26	8	1	0	17	53	2,759
C. Age Mix for Each Racial and Ethnic Group										
2000										
0-19	24.0%	46.2%	21.2%	37.4%	30.9%	25.7%	44.0%	39.5%	40.9%	25.4%
20-64	57.4%	47.4%	66.2%	54.9%	62.4%	71.4%	50.9%	52.1%	53.6%	57.2%
65+	18.6%	6.4%	12.5%	7.6%	6.6%	2.9%	5.1%	8.4%	5.5%	17.4%
85+	2.1%	0.4%	0.4%	0.6%	0.3%	0.0%	0.0%	0.8%	0.4%	1.9%
2010										
0-19	19.3%	29.0%	16.9%	36.5%	24.2%	28.1%	32.0%	41.2%	38.0%	21.5%
20-64	59.5%	63.0%	69.6%	54.4%	63.4%	60.4%	58.2%	51.0%	55.7%	59.1%
65+	21.2%	7.9%	13.5%	9.0%	12.4%	11.5%	9.8%	7.8%	6.3%	19.4%
85+	3.1%	0.3%	1.4%	0.8%	1.0%	1.0%	0.0%	0.7%	0.6%	2.8%
D. Racial and Ethnic Mix for Each Age Group										
2000										
0-19	85.3%	0.5%	0.6%	4.5%	0.9%	0.1%	0.3%	3.2%	9.1%	100.0%
20-64	90.7%	0.2%	0.9%	2.9%	0.8%	0.1%	0.2%	1.9%	5.3%	100.0%
65+	96.2%	0.1%	0.5%	1.3%	0.3%	0.0%	0.1%	1.0%	1.8%	100.0%
85+	97.6%	0.1%	0.2%	1.0%	0.1%	0.0%	0.0%	0.9%	1.2%	100.0%
2010										
0-19	77.7%	0.5%	0.9%	5.8%	0.9%	0.1%	0.2%	4.6%	15.1%	100.0%
20-64	87.1%	0.4%	1.3%	3.2%	0.9%	0.1%	0.1%	2.1%	8.1%	100.0%
65+	94.7%	0.1%	0.8%	1.6%	0.5%	0.1%	0.1%	1.0%	2.8%	100.0%
85+	96.5%	0.0%	0.6%	0.9%	0.3%	0.0%	0.0%	0.6%	1.9%	100.0%
E. Population Growth										
2000-10, Change										
0-19	-3,445	-9	41	189	-13	9	-38	231	1,084	-2,140
20-64	3,107	104	317	305	89	8	-18	226	1,913	5,746
65+	2,717	12	64	91	54	9	3	25	241	3,125
85+	950	0	13	8	6	1	0	1	32	1,003
Total	2,379	107	422	585	130	26	-53	482	3,238	6,731
2000-10, % Change										
0-19	-17.3%	-8.3%	27.5%	18.1%	-6.3%	50.0%	-49.4%	30.9%	51.0%	-9.2%
20-64	6.5%	93.7%	68.2%	19.8%	21.5%	16.0%	-20.2%	23.0%	68.6%	10.9%
65+	17.6%	80.0%	72.7%	42.5%	122.7%	450.0%	33.3%	15.7%	83.7%	19.5%
85+	55.5%	0.0%	433.3%	44.4%	300.0%	N/A	N/A	6.3%	152.4%	57.1%
Total	2.9%	45.7%	60.1%	20.9%	19.6%	37.1%	-30.3%	25.5%	62.3%	7.3%

Source: US Census 2010, 2000

	White, Non- Hispanic	Black, Non- Hispanic	Asian, Non- Hispanic	Other, Non- Hispanic	Detail for Other, Non-Hispanic				Hispanic or Latino	Total Population 2010
					American Indian & Alaska Native	Native Hawaiian & Pacific Islander	Some Other Race	Two or More Races		
F. Population by Library-Defined Age Groups, 2010										
0-5	3,962	17	45	327	53	5	10	259	956	5,307
6-10	3,963	21	57	273	53	4	9	207	811	5,125
11-13	2,737	15	25	207	26	8	4	169	460	3,444
14-18	5,030	40	57	376	52	9	16	299	839	6,342
19-32	10,524	77	179	575	125	10	20	420	1,827	13,182
33-45	11,439	59	237	474	120	17	14	323	1,505	13,714
46-64	29,661	85	372	846	266	32	37	511	1,512	32,476
65-84	15,498	26	136	279	90	10	12	167	476	16,415
85+	2,663	1	16	26	8	1	0	17	53	2,759
Total	85,477	341	1,124	3,383	793	96	122	2,372	8,439	98,764
G. Population by 5-Year Age Brackets, 2010										
0-4	3,233	14	39	275	46	3	9	217	804	4,365
5-9	3,795	18	55	256	46	3	9	198	826	4,950
10-14	4,615	28	44	360	54	14	8	284	751	5,798
15-19	4,827	39	52	345	46	7	13	279	828	6,091
20-24	3,522	31	58	200	43	0	6	151	628	4,439
25-29	3,852	28	66	207	39	7	7	154	686	4,839
30-34	3,902	18	80	179	45	4	8	122	636	4,815
35-39	3,974	22	82	179	41	5	9	124	573	4,830
40-44	4,774	27	98	194	54	9	3	128	562	5,655
45-49	6,401	24	123	217	65	5	10	137	492	7,257
50-54	7,765	25	97	247	72	12	13	150	435	8,569
55-59	8,459	21	92	213	76	9	3	125	371	9,156
60-64	8,197	19	86	206	68	7	12	119	318	8,826
65-69	5,868	12	46	122	40	6	8	68	195	6,243
70-74	4,097	7	32	74	17	3	2	52	145	4,355
75-79	3,016	4	29	42	13	1	1	27	79	3,170
80-84	2,517	3	29	41	20	0	1	20	57	2,647
85-89	1,701	1	11	22	8	1	0	13	38	1,773
90-94	727	0	3	3	0	0	0	3	9	742
95-99	214	0	1	1	0	0	0	1	4	220
100+	21	0	1	0	0	0	0	0	2	24
Total	85,477	341	1,124	3,383	793	96	122	2,372	8,439	98,764
H. Median Age, 2000-10										
	White, Non- Hispanic	Black, Hispanic Inclusive	Asian, Hispanic Inclusive		American Indian & Alaska Native, Hispanic Inclusive	Native Hawaiian & Pacific Islander, Hispanic Inclusive	Some Other Race, Hispanic Inclusive	Two or More Races, Hispanic Inclusive	Hispanic or Latino	Total Population
2000	44.4	23.1	40.4		35.3	29.8	24.9	26.8	26.1	43.1
2010	49.9	32.4	43.9		40.4	40.3	26.7	24.3	27.7	47.6

Source: US Census 2010, 2000

Note: In the American Community Survey and for Census variables other than population, Hispanic origin is not broken out for all races.

I. Income Distribution, 2005-09			J. Median Household Income by Race and Ethnicity, 2005-09 (\$2009)							
Range (ths)	Households	% of Total	White, NH	Black	Asian	Hispanic	Total	% of CA	California	
<\$10	1,668	4.2%	\$58,284	\$48,438	\$65,588	\$63,000	\$58,186	96.3%	\$60,392	
\$10 to <\$25	5,659	14.3%								
\$25 to <\$50	9,574	24.2%								
\$50 to <\$75	8,007	20.2%								
\$75 to <\$100	5,425	13.7%								
\$100 to <\$150	5,688	14.4%								
\$150+	3,521	8.9%								
K. Household Type, 2000-10			2000	2000,%	2010	2010,%				
Total households			36,956	100.0%	41,527	100.0%				
Family Households			26,142	70.7%	27,254	65.6%				
Husband-wife w/children			7,862	21.3%	6,741	16.2%				
Female head, no husband, w/children			2,073	5.6%	1,981	4.8%				
Male head, no wife, w/children			914	2.5%	1,065	2.6%				
Without children			15,293	41.4%	17,467	42.1%				
Nonfamily households			10,814	29.3%	14,273	34.4%				
Living alone			8,437	22.8%	10,936	26.3%				
Other nonfamily			2,377	6.4%	3,337	8.0%	Source: US Census 2010, 2000			
L. Household Type by Race and Ethnicity, 2010			White, NH	Black	Asian	Hispanic	Total			
Total households			37,666	100	397	2,329	41,527			
Husband-wife family			52.3%	50.0%	53.9%	55.1%	52.3%			
Family with male head, no wife			4.3%	2.0%	2.8%	9.2%	4.6%			
Family with female head, no husband			8.3%	8.0%	8.8%	13.3%	8.7%			
Living alone			27.1%	32.0%	24.9%	15.3%	26.3%	Source: US		
Other nonfamily			8.0%	8.0%	9.6%	7.1%	8.0%	Census 2010		
M. Poverty, 2005-09										
Percentage of families and people whose income in the past 12 months is below the poverty level								California		
All families						4.7%	9.8%			
Families w/ related children under 18 years						7.4%	14.5%			
Families w/ female householder, no husband present						16.3%	24.2%			
Families w/ female householder, no husband present w/ related children under 18 years						19.4%	32.2%			
All people						8.1%	13.2%			
Under 18 years						9.1%	18.3%			
18 to 64 years						8.5%	11.9%			
65 years and over						5.2%	8.4%			
N. Educational Attainment, 2005-09										
			% at each level of educational attainment							
			White, NH	Black	Asian	Hispanic	Total			
Population 25 years and over			63,545	278	1,088	4,097	70,636			
Less than high school			5.5%	0.0%	17.4%	20.5%	6.6%			
High school graduate (includes equivalency)			22.7%	49.6%	15.3%	25.8%	22.8%			
Some college or associate's degree			38.3%	28.8%	23.3%	37.7%	38.1%			
Bachelor's degree or higher			33.6%	21.6%	44.0%	16.0%	32.4%			
O. Employment Status, 2010-11										
			2010	June 2011						
In civilian labor force			50,610	50,170						
Employed			44,790	44,460						
Unemployed, % of labor force			11.5%	11.4%	Source: CA Employment Development Department					
P. Occupation, 2005-09										
					Estimate	Percent				
Civilian employed population, 16 yrs & over					44,978	100.0%				
Management, professional, and related occupations					16,843	37.4%				
Service occupations					7,705	17.1%				
Sales and office occupations					11,741	26.1%				
Farming, fishing, and forestry occupations					124	0.3%				
Construction, extraction, maintenance, and repair occupations					5,388	12.0%				
Production, transportation, and material moving occupations					3,177	7.1%				
Q. Class of Worker, 2005-09										
					Estimate	Percent				
Civilian employed population, 16 yrs & over					44,978	100.0%				
Private, for profit, wage and salary employee					25,054	55.7%				
Private, not for profit, wage and salary employee					2,794	6.2%				
Private, for profit, wage and salary self-employed in own business					1,992	4.4%				
Government workers					7,143	15.9%				
Self-employed in own not incorporated business					7,792	17.3%				
Unpaid family workers in family business					203	0.5%				

Source: American Community Survey 2005-09, unless otherwise stated

ProfileTemplate 9-8-11.xlsr 9/14/2011 14:55

Note: In the American Community Survey and for US Census variables other than population, Hispanic origin is not broken out for all races. White, NH represents White, Non-Hispanic. Black and Asian are Hispanic inclusive.