



Highlights

Population Growth: The total population of the Orange County Public Libraries jurisdiction grew by 9% over the past decade to 1.5 million, a growth rate similar to that of California overall. Large gains occurred among Asians (102,000) and Hispanics (73,000), while the white, non-Hispanic population declined (-58,000).

Diversity: The population mix has shifted somewhat over the past decade, with the Hispanic share of population increasing from 21% to 24%, the Asian share increasing from 16% to 22%, and the white, non-Hispanic share decreasing from 58% to 49% of total.

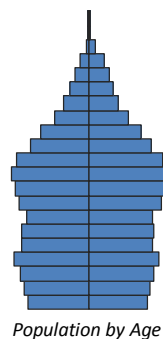
Age Structure: The age structure shifted slightly upward over the past ten years, with the share of the population age 65+ increasing from 11% to 12% of total, compared with 11% statewide. Though the number of young people increased overall, their share of the population fell from 28% to 27% of total.

Education: Educational attainment is higher here than in the state overall. Just 12% of adults have not completed high school, compared with 20% of adults statewide, and 40% have earned a Bachelor’s degree or higher, compared with 30% in California overall.

Income: Households have relatively higher incomes than households in California overall. Only 14% of households had incomes of \$25,000 or less, compared with 20% of households statewide. Nearly 19% of households in the area had incomes of \$150,000 or greater, compared with 12% statewide.

Foreign Born: The foreign-born population in this jurisdiction makes up 28% of the total. Most of these individuals are from Asia, 53%, compared with 34% statewide.

Note: The Orange County Public Libraries serve the county population that is not served by the eight municipal libraries and the two special district libraries.



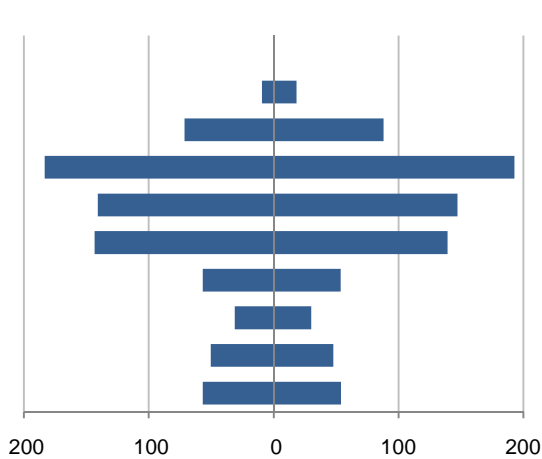
Population by Age

This demographic profile is part of a series of library jurisdiction profiles prepared for the California State Library by the Stanford Center on Longevity. The project, "Understanding California's Shifting Demographics," was supported in whole by the U.S. Institute of Museum and Library Services under the provisions of the Library Services and Technology Act, administered in California by the State Librarian. The opinions expressed herein do not necessarily reflect the position or policy of the U.S. Institute of Museum and Library Services or the California State Library, and no official endorsement by the U.S. Institute of Museum and Library Services or the California State Library should be inferred.

Key Indicators			
		2000	2010
Population Growth			
	Total population	1,389,058	1,514,082
	10-year growth	21.6%	9.0%
Diversity			
	% Hispanic	21.4%	24.4%
	% Asian, non-Hispanic	16.4%	21.8%
	% White, non-Hispanic	57.6%	49.0%
	% Black, non-Hispanic	1.4%	1.3%
Aging			
	% 65+	10.8%	12.3%
	Median age	#N/A	#N/A
Households			
	% Married couple with children	28.9%	26.0%
	% Living alone	22.5%	22.1%

1. Population by Library-Defined Age Group, 2010

In thousands; males on left, females on right

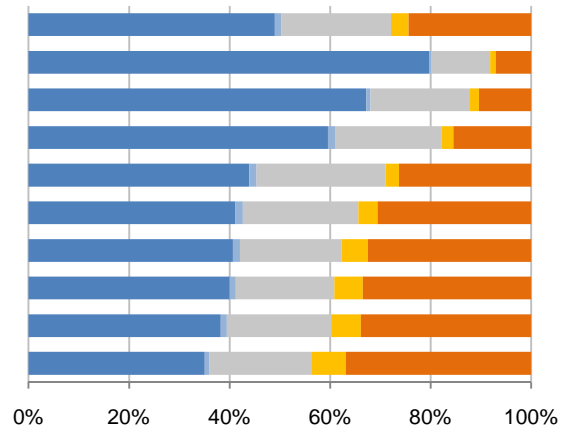


2. Race and Ethnicity by Library-Defined Age Group, 2010

Legend: White,NH (Blue), Black,NH (Light Blue), Asian,NH (Grey), Other,NH (Yellow), Hispanic (Orange)

Age group

- Total
- 85+, Oldest
- 65 to 84, Older adults
- 46 to 64, Midlife
- 33 to 45, Adult
- 19 to 32, Young
- 14 to 18, Teens
- 11 to 13, Tweens
- 6 to 10, School age
- 0 to 5, Infants/toddlers

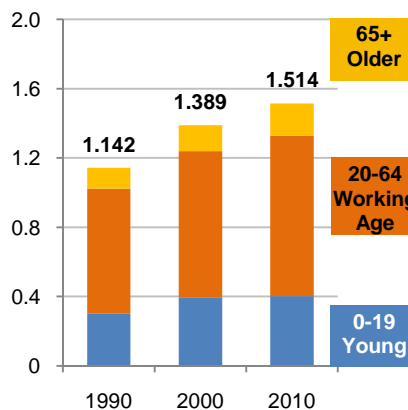


3. Population Growth by Library-Defined Age Group, 2000-10

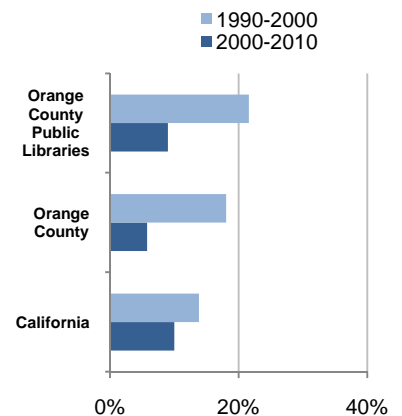
	2010	Change	% Change
Total	1,514,082	125,024	9.0%
85+	27,668	8,116	41.5%
65 to 84	159,246	28,190	21.5%
46 to 64	376,158	96,728	34.6%
33 to 45	287,907	-22,310	-7.2%
19 to 32	282,584	9,032	3.3%
14 to 18	110,548	18,590	20.2%
11 to 13	61,260	3,834	6.7%
6 to 10	98,217	-8,068	-7.6%
0 to 5	110,494	-9,088	-7.6%

4. Population Total, 1990-2010

In millions



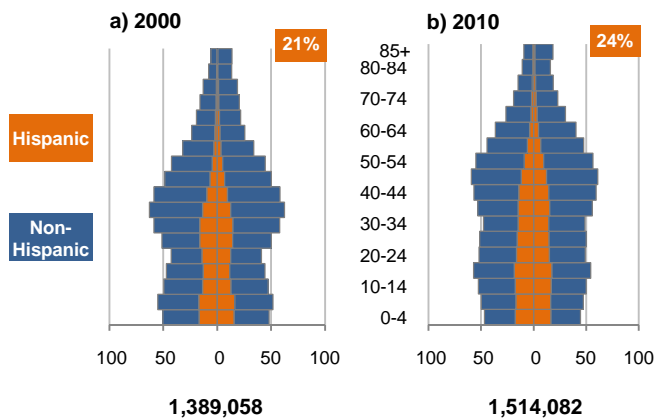
5. 10-Year Population Change



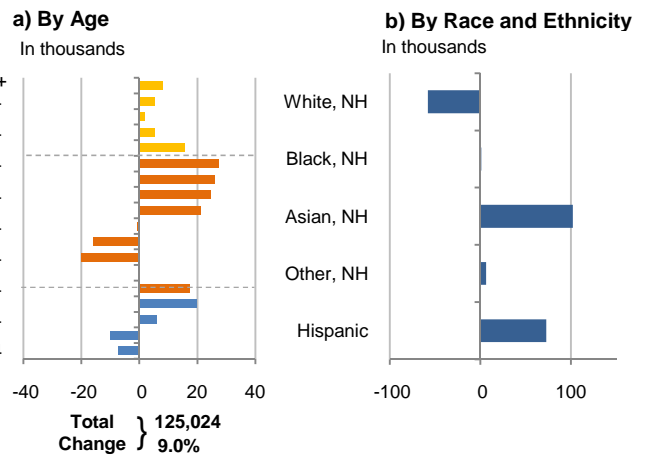
Source: US Census 2010, 2000, or 1990

6. Population by 5-Year Age Brackets

In thousands; males on left, females on right

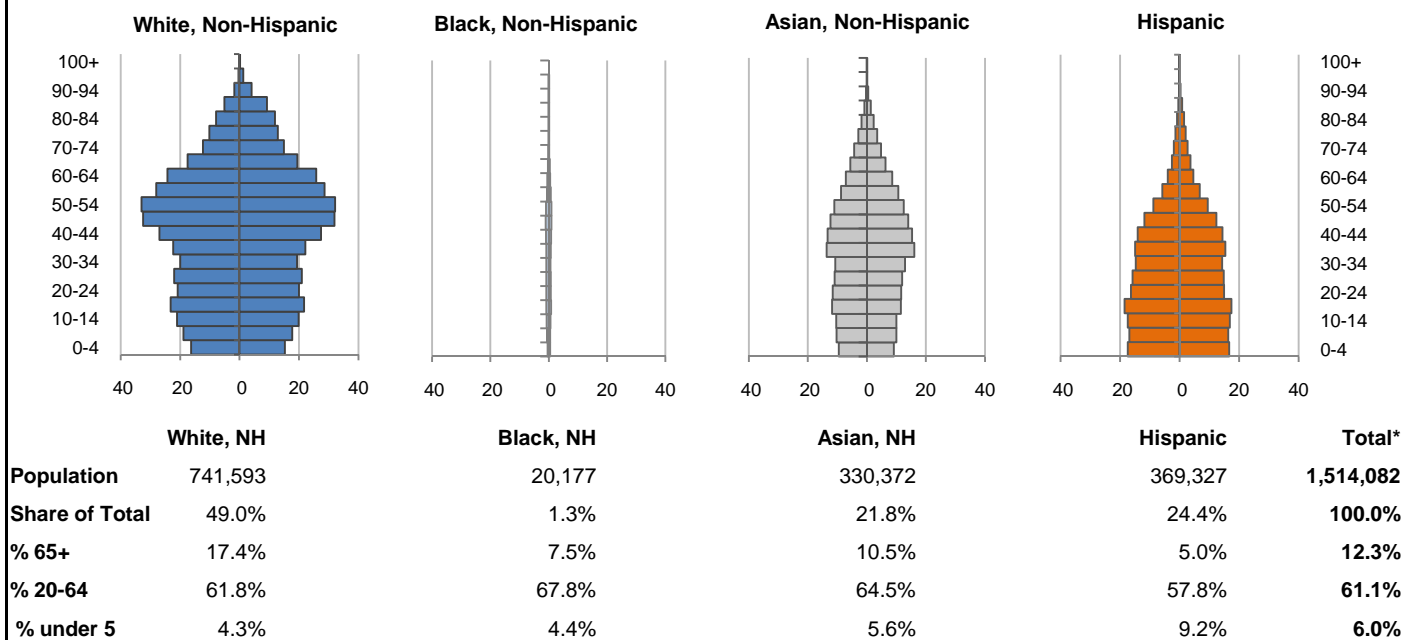


7. 10-Year Change in Population, 2000-10

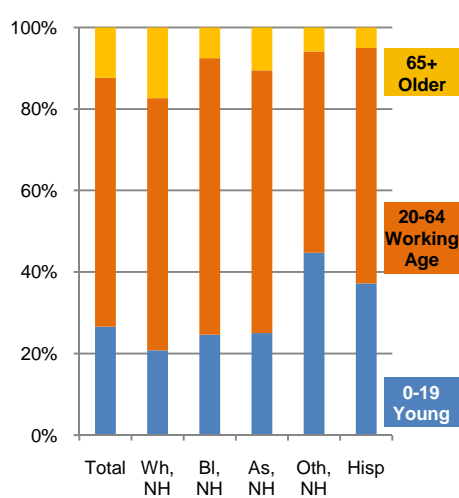


8. Population by Age, Race, and Ethnicity, 2010

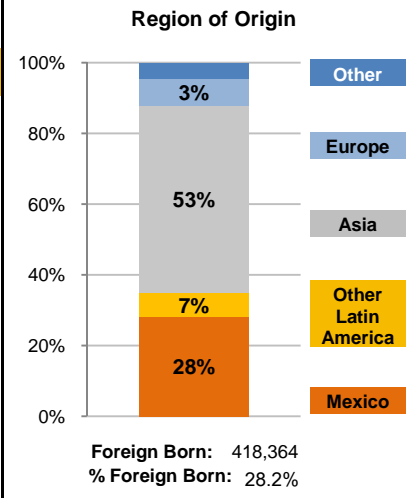
In thousands; males on left, females on right



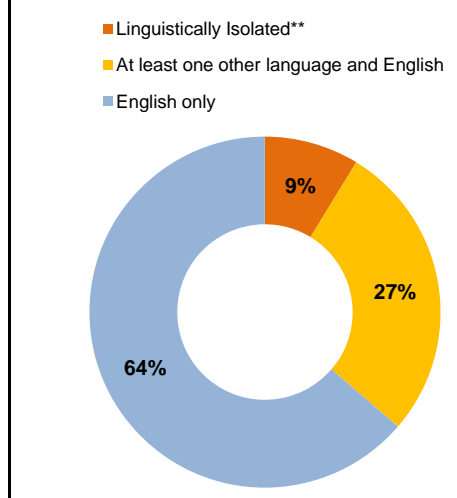
9. Age Mix by Race and Ethnicity, 2010



10. Foreign Born, 2005-09



11. Household Language, 2005-09

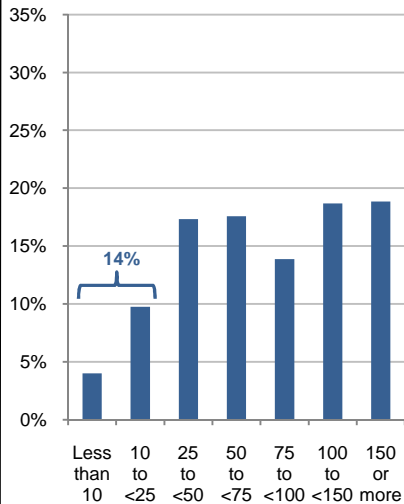


Wh=White; BI=Black; As=Asian; Oth=Other Race or Two or More Races; Hisp=Hispanic; NH=Non-Hispanic; ACS=American Community Survey 2005-09
 *See pages 5-6 for detail on Other, Non-Hispanic
 **Linguistically Isolated = No one in the household age 14 and over speaks English at least "very well"

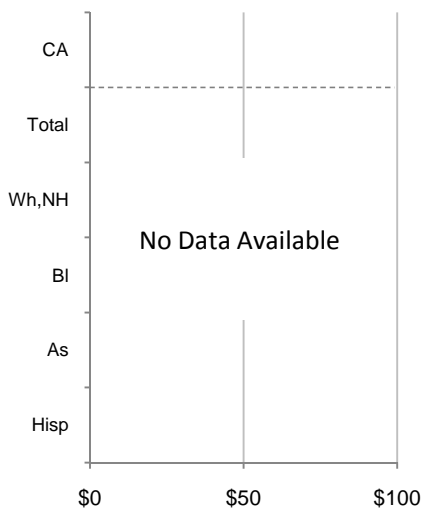
12. Household Income, 2005-09

In thousands of \$ (2009)

a) Income Distribution



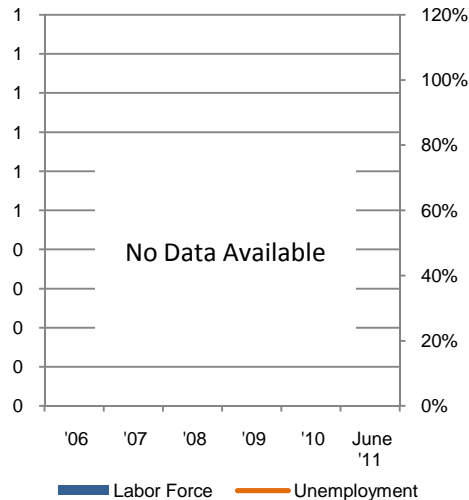
b) Median Household Income by Race and Ethnicity*



13. Labor Force and Unemployment, 2006-11

Labor Force

Unemployment Rate

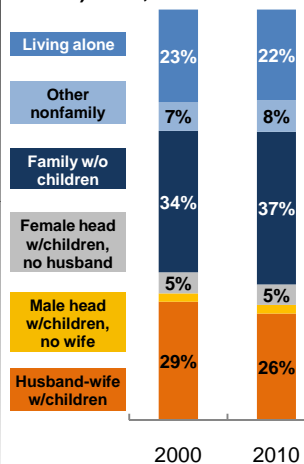


Source: CA Employment Development Department

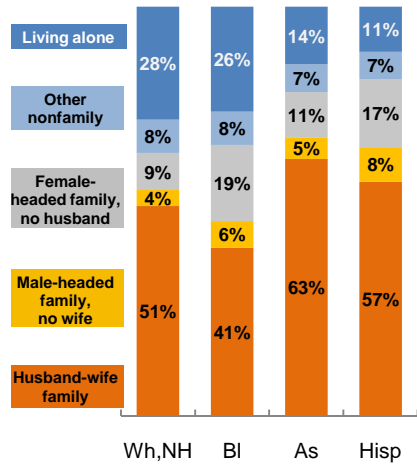
14. Household Type, 2010

% of all households

a) Total, 2000-10

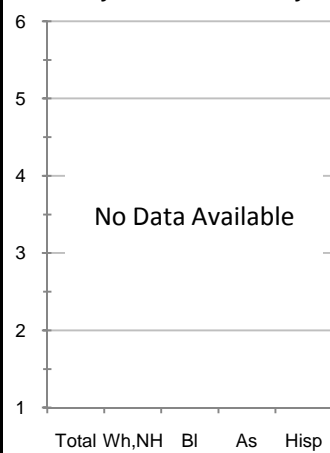


b) By Race and Ethnicity,* 2010

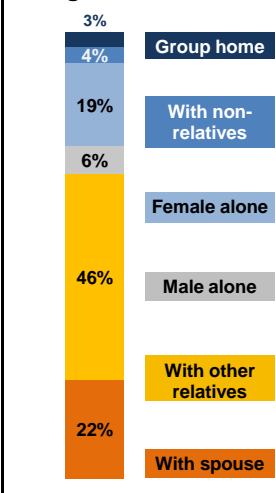


15. Average Household Size, 2010

By Race and Ethnicity*



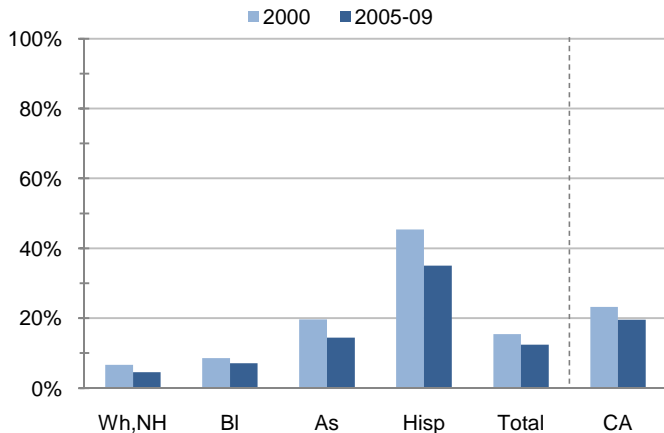
16. Living Arrangements Age 65+, 2005-09



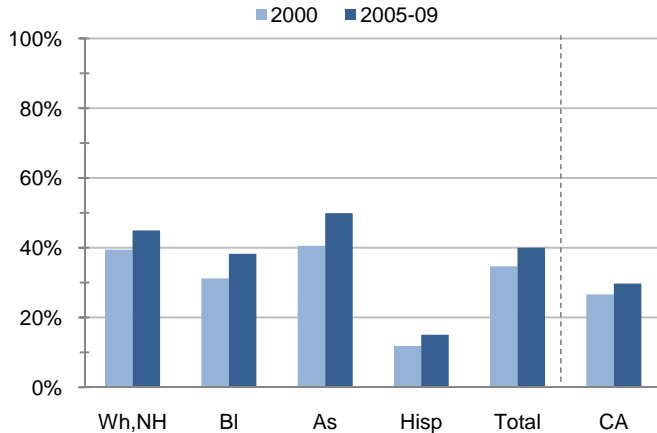
Source: ACS 2005-09

17. Educational Attainment for the Population Age 25 and Over by Race and Ethnicity*

a) % of Adults Who Did Not Complete High School



b) % of Adults Who Attained a BA or Higher



Source: Census 2000, ACS 2005-09

*Wh,NH=White,Non-Hispanic; BI=Black,Hispanic Inclusive; As=Asian,Hispanic Inclusive; Hisp=Hispanic(Includes all races); CA=California Total

Note: In the American Community Survey and for Census variables other than population, Hispanic origin is not broken out for all races.

	White, Non- Hispanic	Black, Non- Hispanic	Asian, Non- Hispanic	Other, Non- Hispanic	Detail for Other, Non-Hispanic				Hispanic or Latino	Total Population
					American Indian & Alaska Native	Native Hawaiian & Pacific Islander	Some Other Race	Two or More Races		
A. Total Population										
2000 Total	799,438	18,939	228,098	46,013	3,933	4,166	2,488	35,426	296,570	1,389,058
2000 % of Total	57.6%	1.4%	16.4%	3.3%	0.3%	0.3%	0.2%	2.6%	21.4%	100.0%
2010 Total	741,593	20,177	330,372	52,613	3,067	4,142	2,977	42,427	369,327	1,514,082
2010 % of Total	49.0%	1.3%	21.8%	3.5%	0.2%	0.3%	0.2%	2.8%	24.4%	100.0%
B. Population in Major Age Groups by Race and Ethnicity										
2000										
0-19	188,495	5,730	62,226	19,503	1,001	1,438	1,034	16,030	117,439	393,393
20-64	491,135	12,495	148,961	24,093	2,667	2,544	1,332	17,550	168,373	845,057
65+	119,808	714	16,911	2,417	265	184	122	1,846	10,758	150,608
85+	17,247	63	1,125	226	27	9	12	178	891	19,552
2010										
0-19	154,094	4,971	82,526	23,514	650	1,129	1,106	20,629	137,403	402,508
20-64	458,478	13,689	213,074	26,000	2,085	2,712	1,720	19,483	213,419	924,660
65+	129,021	1,517	34,772	3,099	332	301	151	2,315	18,505	186,914
85+	22,048	129	3,240	296	33	27	15	221	1,955	27,668
C. Age Mix for Each Racial and Ethnic Group										
2000										
0-19	23.6%	30.3%	27.3%	42.4%	25.5%	34.5%	41.6%	45.2%	39.6%	28.3%
20-64	61.4%	66.0%	65.3%	52.4%	67.8%	61.1%	53.5%	49.5%	56.8%	60.8%
65+	15.0%	3.8%	7.4%	5.3%	6.7%	4.4%	4.9%	5.2%	3.6%	10.8%
85+	2.2%	0.3%	0.5%	0.5%	0.7%	0.2%	0.5%	0.5%	0.3%	1.4%
2010										
0-19	20.8%	24.6%	25.0%	44.7%	21.2%	27.3%	37.2%	48.6%	37.2%	26.6%
20-64	61.8%	67.8%	64.5%	49.4%	68.0%	65.5%	57.8%	45.9%	57.8%	61.1%
65+	17.4%	7.5%	10.5%	5.9%	10.8%	7.3%	5.1%	5.5%	5.0%	12.3%
85+	3.0%	0.6%	1.0%	0.6%	1.1%	0.7%	0.5%	0.5%	0.5%	1.8%
D. Racial and Ethnic Mix for Each Age Group										
2000										
0-19	47.9%	1.5%	15.8%	5.0%	0.3%	0.4%	0.3%	4.1%	29.9%	100.0%
20-64	58.1%	1.5%	17.6%	2.9%	0.3%	0.3%	0.2%	2.1%	19.9%	100.0%
65+	79.5%	0.5%	11.2%	1.6%	0.2%	0.1%	0.1%	1.2%	7.1%	100.0%
85+	88.2%	0.3%	5.8%	1.2%	0.1%	0.0%	0.1%	0.9%	4.6%	100.0%
2010										
0-19	38.3%	1.2%	20.5%	5.8%	0.2%	0.3%	0.3%	5.1%	34.1%	100.0%
20-64	49.6%	1.5%	23.0%	2.8%	0.2%	0.3%	0.2%	2.1%	23.1%	100.0%
65+	69.0%	0.8%	18.6%	1.7%	0.2%	0.2%	0.1%	1.2%	9.9%	100.0%
85+	79.7%	0.5%	11.7%	1.1%	0.1%	0.1%	0.1%	0.8%	7.1%	100.0%
E. Population Growth										
2000-10, Change										
0-19	-34,401	-759	20,300	4,011	-351	-309	72	4,599	19,964	9,115
20-64	-32,657	1,194	64,113	1,907	-582	168	388	1,933	45,046	79,603
65+	9,213	803	17,861	682	67	117	29	469	7,747	36,306
85+	4,801	66	2,115	70	6	18	3	43	1,064	8,116
Total	-57,845	1,238	102,274	6,600	-866	-24	489	7,001	72,757	125,024
2000-10, % Change										
0-19	-18.3%	-13.2%	32.6%	20.6%	-35.1%	-21.5%	7.0%	28.7%	17.0%	2.3%
20-64	-6.6%	9.6%	43.0%	7.9%	-21.8%	6.6%	29.1%	11.0%	26.8%	9.4%
65+	7.7%	112.5%	105.6%	28.2%	25.3%	63.6%	23.8%	25.4%	72.0%	24.1%
85+	27.8%	104.8%	188.0%	31.0%	22.2%	200.0%	25.0%	24.2%	119.4%	41.5%
Total	-7.2%	6.5%	44.8%	14.3%	-22.0%	-0.6%	19.7%	19.8%	24.5%	9.0%

Source: US Census 2010, 2000

	White, Non- Hispanic	Black, Non- Hispanic	Asian, Non- Hispanic	Other, Non- Hispanic	Detail for Other, Non-Hispanic				Hispanic or Latino	Total Population 2010
					American Indian & Alaska Native	Native Hawaiian & Pacific Islander	Some Other Race	Two or More Races		
F. Population by Library-Defined Age Groups, 2010										
0-5	38,703	1,058	22,541	7,424	141	264	349	6,670	40,768	110,494
6-10	37,531	1,216	20,377	5,838	138	255	248	5,197	33,255	98,217
11-13	24,506	770	12,001	3,453	109	173	179	2,992	20,530	61,260
14-18	44,928	1,570	22,394	5,762	210	358	280	4,914	35,894	110,548
19-32	116,362	4,186	64,841	10,821	607	961	720	8,533	86,374	282,584
33-45	126,426	4,200	73,891	7,697	550	866	529	5,752	75,693	287,907
46-64	224,116	5,660	79,555	8,519	980	964	521	6,054	58,308	376,158
65-84	106,973	1,388	31,532	2,803	299	274	136	2,094	16,550	159,246
85+	22,048	129	3,240	296	33	27	15	221	1,955	27,668
Total	741,593	20,177	330,372	52,613	3,067	4,142	2,977	42,427	369,327	1,514,082
G. Population by 5-Year Age Brackets, 2010										
0-4	31,642	878	18,566	6,168	115	206	295	5,552	34,034	91,288
5-9	36,592	1,133	20,292	5,896	134	253	242	5,267	33,180	97,093
10-14	40,921	1,302	20,397	5,796	181	289	282	5,044	34,283	102,699
15-19	44,939	1,658	23,271	5,654	220	381	287	4,766	35,906	111,428
20-24	40,846	1,505	23,169	4,213	233	348	243	3,389	31,299	101,032
25-29	42,924	1,456	22,825	3,670	213	365	266	2,826	30,611	101,486
30-34	39,337	1,438	23,665	3,072	172	306	249	2,345	29,044	96,556
35-39	44,474	1,516	29,781	2,963	201	330	207	2,225	30,299	109,033
40-44	54,423	1,702	28,642	2,959	244	330	182	2,203	28,471	116,197
45-49	64,472	1,980	26,395	3,070	293	358	211	2,208	24,166	120,083
50-54	65,192	1,801	23,537	2,667	309	310	159	1,889	18,331	111,528
55-59	56,689	1,332	19,364	1,945	225	202	125	1,393	12,583	91,913
60-64	50,121	959	15,696	1,441	195	163	78	1,005	8,615	76,832
65-69	36,890	618	11,905	1,081	126	100	63	792	6,219	56,713
70-74	27,208	372	9,047	776	91	95	37	553	4,568	41,971
75-79	23,050	241	6,431	562	49	46	23	444	3,438	33,722
80-84	19,825	157	4,149	384	33	33	13	305	2,325	26,840
85-89	14,405	89	2,179	208	21	17	10	160	1,322	18,203
90-94	5,793	31	810	68	10	8	3	47	479	7,181
95-99	1,616	9	216	18	2	0	2	14	134	1,993
100+	234	0	35	2	0	2	0	0	20	291
Total	741,593	20,177	330,372	52,613	3,067	4,142	2,977	42,427	369,327	1,514,082
H. Median Age, 2000-10										
	White, Non- Hispanic	Black, Hispanic Inclusive	Asian, Hispanic Inclusive		American Indian & Alaska Native, Hispanic Inclusive	Native Hawaiian & Pacific Islander, Hispanic Inclusive	Some Other Race, Hispanic Inclusive	Two or More Races, Hispanic Inclusive	Hispanic or Latino	Total Population
2000	#N/A	#N/A	#N/A		#N/A	#N/A	#N/A	#N/A	#N/A	#N/A
2010	#N/A	#N/A	#N/A		#N/A	#N/A	#N/A	#N/A	#N/A	#N/A

Source: US Census 2010, 2000

Note: In the American Community Survey and for Census variables other than population, Hispanic origin is not broken out for all races.

I. Income Distribution, 2005-09			J. Median Household Income by Race and Ethnicity, 2005-09 (\$2009)						
Range (ths)	Households	% of Total	White, NH	Black	Asian	Hispanic	Total	% of CA	California
<\$10	20,487	4.0%	#N/A	#N/A	#N/A	#N/A	#N/A	#N/A	\$60,392
\$10 to <\$25	49,996	9.7%							
\$25 to <\$50	88,802	17.3%							
\$50 to <\$75	90,085	17.6%							
\$75 to <\$100	71,087	13.9%							
\$100 to <\$150	95,793	18.7%							
\$150+	96,605	18.8%							
K. Household Type, 2000-10			2000	2000,%	2010	2010,%			
Total households			484,376	100.0%	524,684	100.0%			
Family Households			341,141	70.4%	368,508	70.2%			
Husband-wife w/children			139,766	28.9%	136,172	26.0%			
Female head, no husband, w/children			24,928	5.1%	26,371	5.0%			
Male head, no wife, w/children			9,621	2.0%	10,834	2.1%			
Without children			166,826	34.4%	195,131	37.2%			
Nonfamily households			143,235	29.6%	156,176	29.8%			
Living alone			109,094	22.5%	115,858	22.1%			
Other nonfamily			34,141	7.0%	40,318	7.7%	Source: US Census 2010, 2000		
L. Household Type by Race and Ethnicity, 2010			White, NH	Black	Asian	Hispanic	Total		
Total households			316,812	8,467	100,128	87,177	524,684		
Husband-wife family			51.3%	41.2%	62.8%	57.3%	54.3%		
Family with male head, no wife			3.9%	6.5%	5.2%	8.4%	5.0%		
Family with female head, no husband			9.0%	18.6%	11.2%	16.7%	11.0%		
Living alone			27.6%	25.7%	14.0%	11.0%	22.1%	Source: US	
Other nonfamily			8.1%	8.1%	6.8%	6.6%	7.7%	Census 2010	
M. Poverty, 2005-09									
Percentage of families and people whose income in the past 12 months is below the poverty level								California	
All families						5.8%	9.8%		
Families w/ related children under 18 years						8.2%	14.5%		
Families w/ female householder, no husband present						15.1%	24.2%		
Families w/ female householder, no husband present w/ related children under 18 years						21.7%	32.2%		
All people						8.5%	13.2%		
Under 18 years						10.4%	18.3%		
18 to 64 years						8.0%	11.9%		
65 years and over						7.1%	8.4%		
N. Educational Attainment, 2005-09									
			% at each level of educational attainment						
			White, NH	Black	Asian	Hispanic	Total		
Population 25 years and over			571,335	15,430	202,821	186,519	994,431		
Less than high school			4.5%	7.1%	14.5%	35.0%	12.4%		
High school graduate (includes equivalency)			16.7%	16.0%	14.1%	26.2%	18.0%		
Some college or associate's degree			33.9%	38.7%	21.5%	23.7%	29.6%		
Bachelor's degree or higher			44.9%	38.3%	49.9%	15.1%	40.0%		
O. Employment Status, 2010-11									
			2010	June 2011					
In civilian labor force			#N/A	#N/A					
Employed			#N/A	#N/A					
Unemployed, % of labor force			#N/A	#N/A	Source: CA Employment Development Department				
P. Occupation, 2005-09									
					Estimate	Percent			
Civilian employed population, 16 yrs & over					728,861	100.0%			
Management, professional, and related occupations					319,246	43.8%			
Service occupations					101,590	13.9%			
Sales and office occupations					199,536	27.4%			
Farming, fishing, and forestry occupations					1,407	0.2%			
Construction, extraction, maintenance, and repair occupations					44,889	6.2%			
Production, transportation, and material moving occupations					62,193	8.5%			
Q. Class of Worker, 2005-09									
					Estimate	Percent			
Civilian employed population, 16 yrs & over					728,861	100.0%			
Private, for profit, wage and salary employee					508,946	69.8%			
Private, not for profit, wage and salary employee					33,556	4.6%			
Private, for profit, wage and salary self-employed in own business					36,080	5.0%			
Government workers					84,995	11.7%			
Self-employed in own not incorporated business					63,775	8.7%			
Unpaid family workers in family business					1,509	0.2%			

Source: American Community Survey 2005-09, unless otherwise stated

ProfileTemplate 9-8-11.xlsr 9/14/2011 10:06

Note: In the American Community Survey and for US Census variables other than population, Hispanic origin is not broken out for all races. White, NH represents White, Non-Hispanic. Black and Asian are Hispanic inclusive.