

Highlights



Population Growth: The population of Paso Robles increased by 23% over the past decade to 30,000. This growth rate is more than twice the statewide rate of 10%. The largest increase was a 53% increase in the Hispanic population.

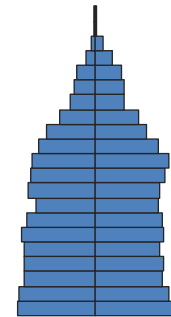
Diversity: The white, non-Hispanic population, still the largest group, decreased from 64% to 59% of total, while the Hispanic population increased from 28% to 34% of total.

Age Structure: The median age in Paso Robles equals the statewide median of 35, but the age distribution differs somewhat. Paso Robles has a slightly higher share of young people and a higher share of population age 65+, 13% compared with 11% statewide. The Hispanic population is young, with a median age of 25, while the white, non-Hispanic population has a median age of 45.

Households: The household mix in Paso Robles is similar to the statewide mix, with family households accounting for 71% of all households (69% statewide) and husband-wife families with children declining from 27% to 24% of total. Among individuals age 65+, 29% live alone, compared with 25% statewide.

Education: Adults in Paso Robles are relatively less educated than adults statewide, with only 17% of adults having Bachelor’s degrees or higher, compared with 30% in California as a whole.

Income: Median household income is \$54,000, 90% of the state median of \$60,000. Only 6% of households have income of \$150,000 or more, compared with 12% for the state.



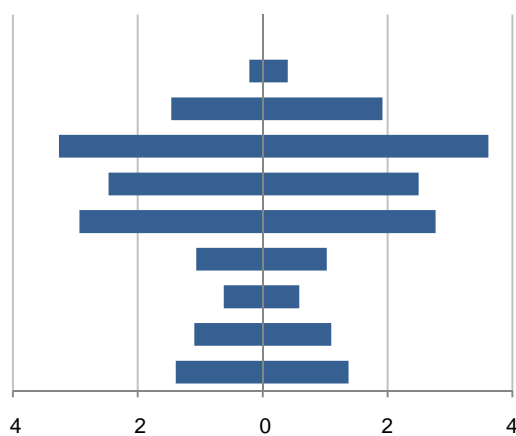
Population by Age

This demographic profile is part of a series of library jurisdiction profiles prepared for the California State Library by the Stanford Center on Longevity. The project, "Understanding California's Shifting Demographics," was supported in whole by the U.S. Institute of Museum and Library Services under the provisions of the Library Services and Technology Act, administered in California by the State Librarian. The opinions expressed herein do not necessarily reflect the position or policy of the U.S. Institute of Museum and Library Services or the California State Library, and no official endorsement by the U.S. Institute of Museum and Library Services or the California State Library should be inferred.

Key Indicators			
		2000	2010
Population Growth			
	Total population	24,297	29,793
	10-year growth	30.7%	22.6%
Diversity			
	% Hispanic	27.7%	34.5%
	% Asian, non-Hispanic	1.8%	1.9%
	% White, non-Hispanic	64.2%	59.1%
	% Black, non-Hispanic	3.1%	1.8%
Aging			
	% 65+	13.4%	13.4%
	Median age	33.0	35.3
Households			
	% Married couple with children	26.7%	23.9%
	% Living alone	23.5%	22.9%

1. Population by Library-Defined Age Group, 2010

In thousands; males on left, females on right

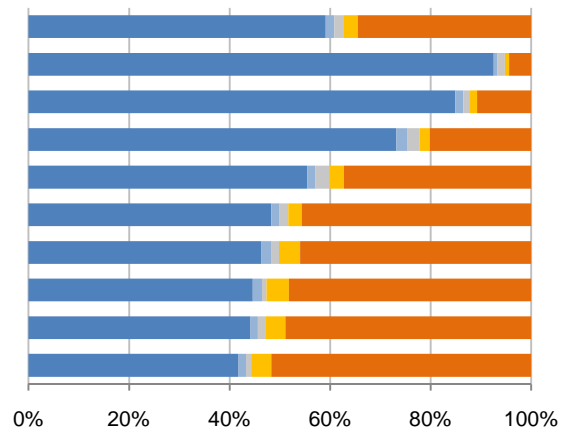


2. Race and Ethnicity by Library-Defined Age Group, 2010

White, NH Black, NH Asian, NH Other, NH Hispanic

Age group

- Total
- 85+, Oldest
- 65 to 84, Older adults
- 46 to 64, Midlife
- 33 to 45, Adult
- 19 to 32, Young
- 14 to 18, Teens
- 11 to 13, Tweens
- 6 to 10, School age
- 0 to 5, Infants/toddlers

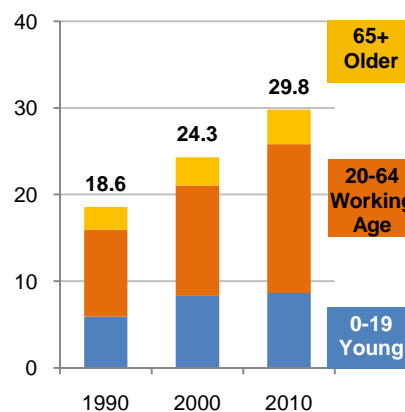


3. Population Growth by Library-Defined Age Group, 2000-10

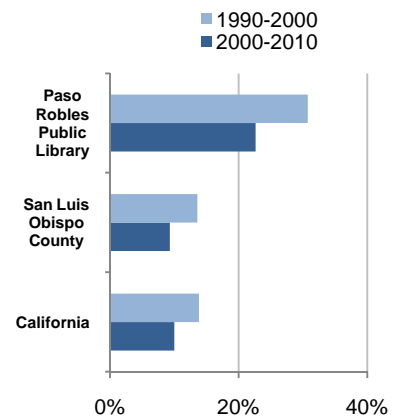
	2010	Change	% Change
Total	29,793	5,496	22.6%
85+	615	261	73.7%
65 to 84	3,381	473	16.3%
46 to 64	6,877	2,717	65.3%
33 to 45	4,964	229	4.8%
19 to 32	5,703	1,416	33.0%
14 to 18	2,089	-367	-14.9%
11 to 13	1,210	11	0.9%
6 to 10	2,191	123	5.9%
0 to 5	2,763	633	29.7%

4. Population Total, 1990-2010

In thousands



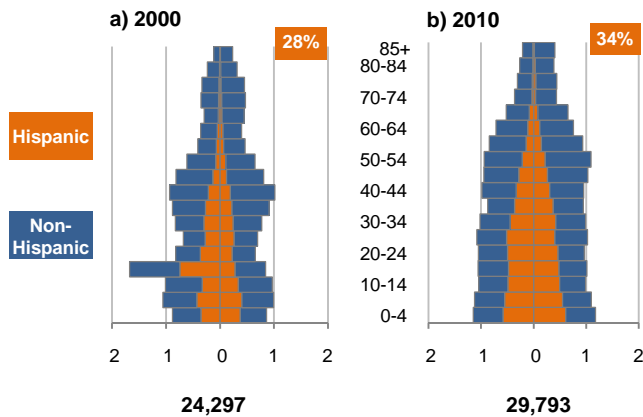
5. 10-Year Population Change



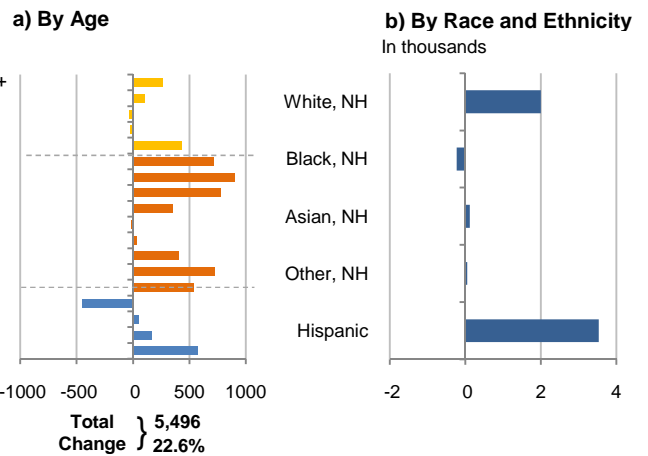
Source: US Census 2010, 2000, or 1990

6. Population by 5-Year Age Brackets

In thousands; males on left, females on right

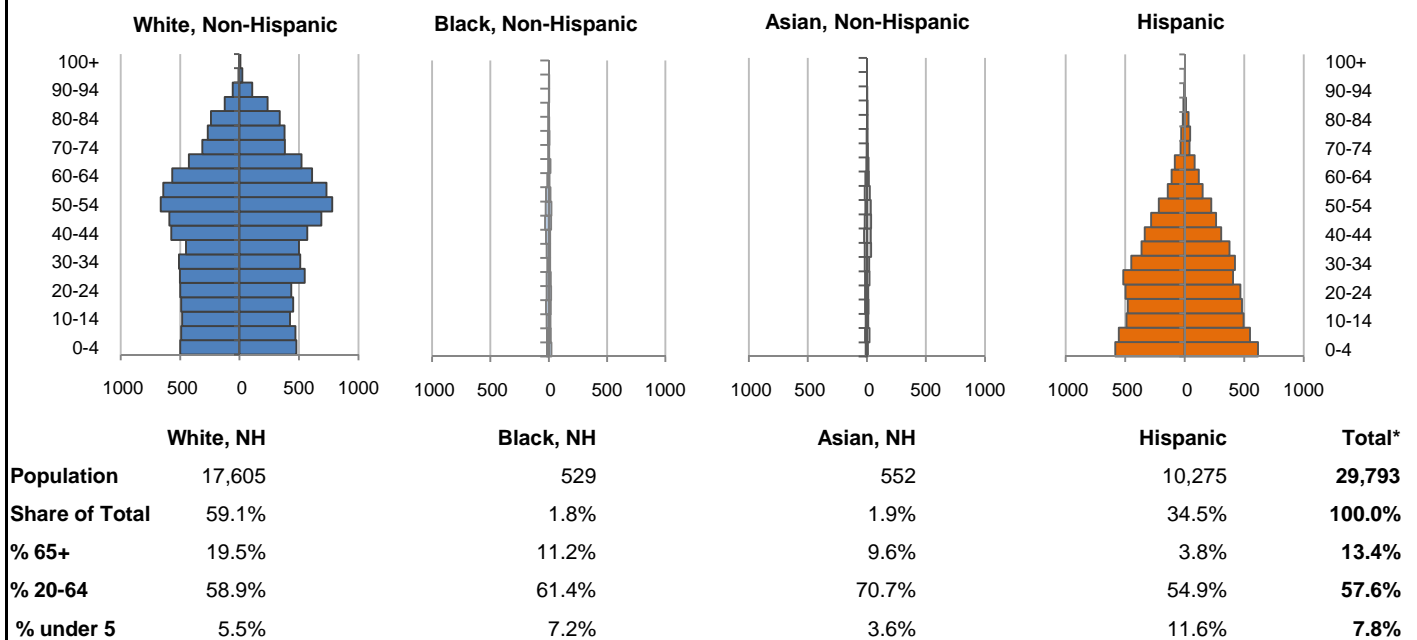


7. 10-Year Change in Population, 2000-10

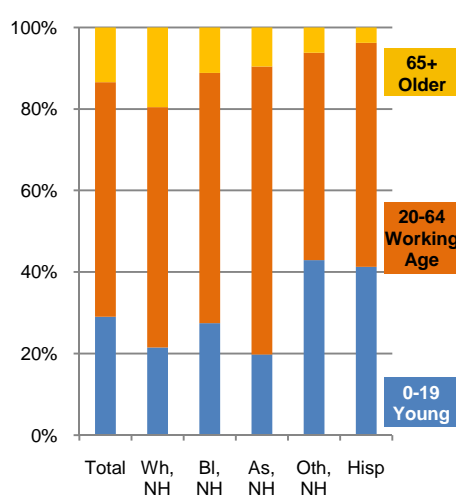


8. Population by Age, Race, and Ethnicity, 2010

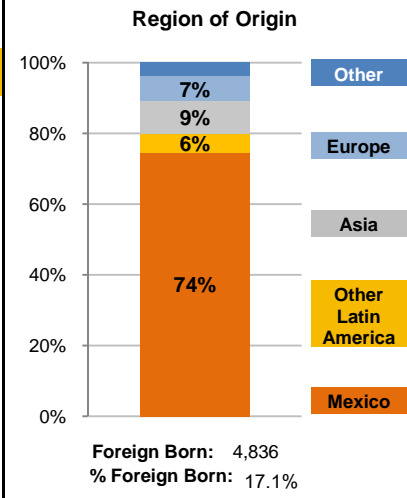
Males on left, females on right



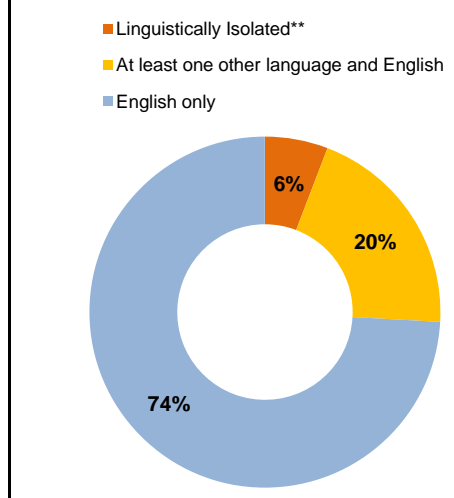
9. Age Mix by Race and Ethnicity, 2010



10. Foreign Born, 2005-09



11. Household Language, 2005-09



Wh=White; BI=Black; As=Asian; Oth=Other Race or Two or More Races; Hisp=Hispanic; NH=Non-Hispanic; ACS=American Community Survey 2005-09

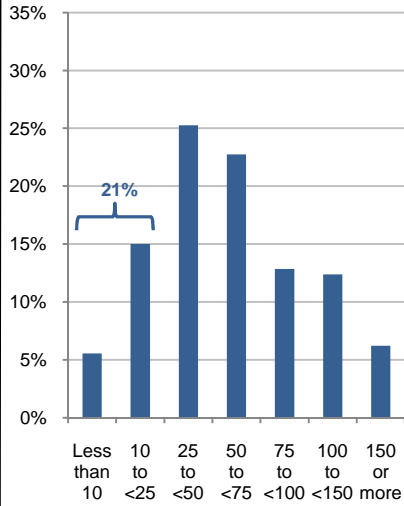
*See pages 5-6 for detail on Other, Non-Hispanic

**Linguistically Isolated = No one in the household age 14 and over speaks English at least "very well"

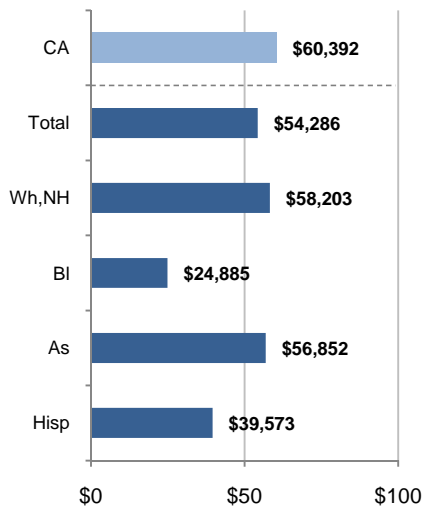
12. Household Income, 2005-09

In thousands of \$ (2009)

a) Income Distribution



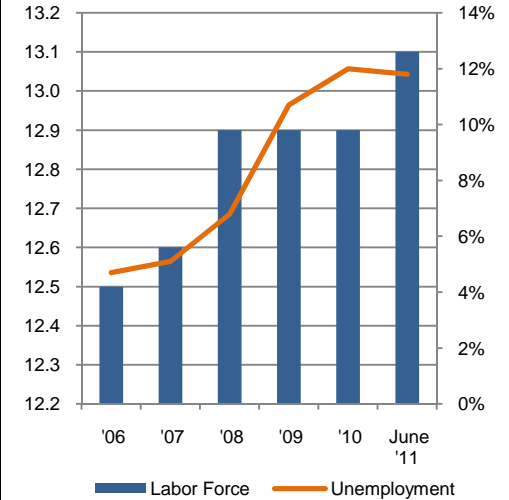
b) Median Household Income by Race and Ethnicity*



13. Labor Force and Unemployment, 2006-11

Labor Force In thousands

Unemployment Rate

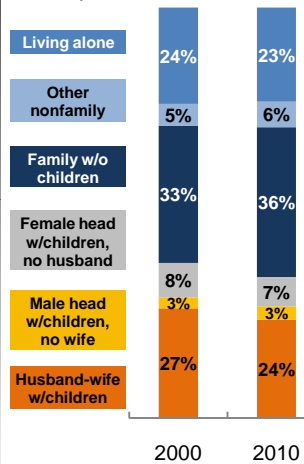


Source: CA Employment Development Department

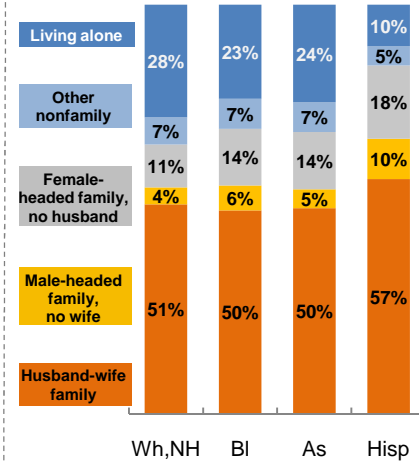
14. Household Type, 2010

% of all households

a) Total, 2000-10

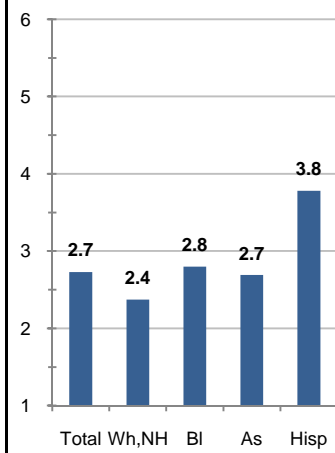


b) By Race and Ethnicity,* 2010

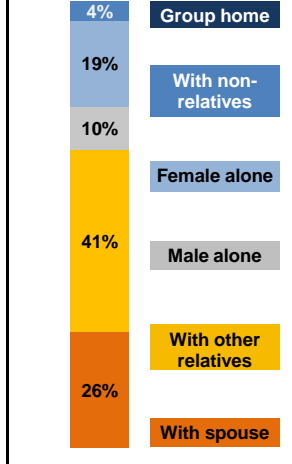


15. Average Household Size, 2010

By Race and Ethnicity*



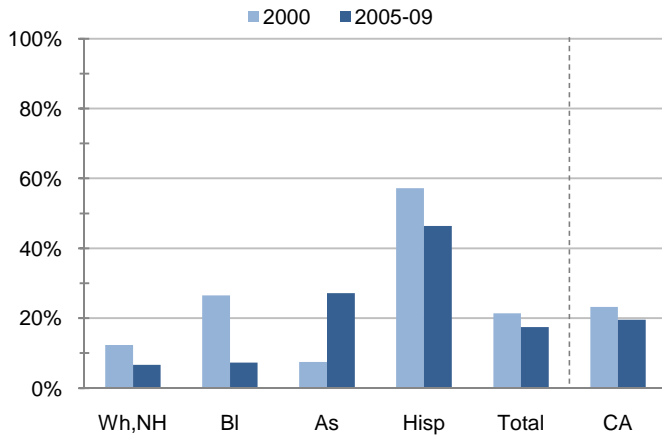
16. Living Arrangements Age 65+, 2005-09



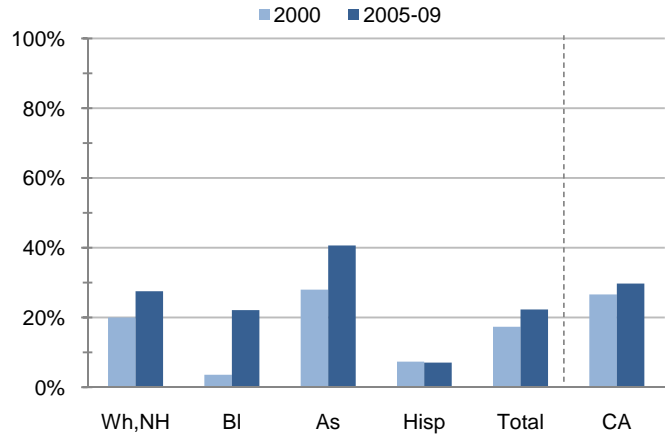
Source: ACS 2005-09

17. Educational Attainment for the Population Age 25 and Over by Race and Ethnicity*

a) % of Adults Who Did Not Complete High School



b) % of Adults Who Attained a BA or Higher



Source: Census 2000, ACS 2005-09

*Wh,NH=White,Non-Hispanic; Bl=Black,Hispanic Inclusive; As=Asian,Hispanic Inclusive; Hisp=Hispanic(Includes all races); CA=California Total

Note: In the American Community Survey and for Census variables other than population, Hispanic origin is not broken out for all races.

	White, Non- Hispanic	Black, Non- Hispanic	Asian, Non- Hispanic	Other, Non- Hispanic	Detail for Other, Non-Hispanic				Hispanic or Latino	Total Population
					American Indian & Alaska Native	Native Hawaiian & Pacific Islander	Some Other Race	Two or More Races		
A. Total Population										
2000 Total	15,600	751	430	781	174	14	30	563	6,735	24,297
2000 % of Total	64.2%	3.1%	1.8%	3.2%	0.7%	0.1%	0.1%	2.3%	27.7%	100.0%
2010 Total	17,605	529	552	832	150	49	43	590	10,275	29,793
2010 % of Total	59.1%	1.8%	1.9%	2.8%	0.5%	0.2%	0.1%	2.0%	34.5%	100.0%
B. Population in Major Age Groups by Race and Ethnicity										
2000										
0-19	4,151	376	154	363	54	3	17	289	3,263	8,307
20-64	8,519	325	239	372	108	11	12	241	3,273	12,728
65+	2,930	50	37	46	12	0	1	33	199	3,262
85+	332	3	3	6	3	0	0	3	10	354
2010										
0-19	3,787	145	109	357	46	13	13	285	4,243	8,641
20-64	10,378	325	390	423	89	36	26	272	5,640	17,156
65+	3,440	59	53	52	15	0	4	33	392	3,996
85+	569	5	9	5	1	0	0	4	27	615
C. Age Mix for Each Racial and Ethnic Group										
2000										
0-19	26.6%	50.1%	35.8%	46.5%	31.0%	21.4%	56.7%	51.3%	48.4%	34.2%
20-64	54.6%	43.3%	55.6%	47.6%	62.1%	78.6%	40.0%	42.8%	48.6%	52.4%
65+	18.8%	6.7%	8.6%	5.9%	6.9%	0.0%	3.3%	5.9%	3.0%	13.4%
85+	2.1%	0.4%	0.7%	0.8%	1.7%	0.0%	0.0%	0.5%	0.1%	1.5%
2010										
0-19	21.5%	27.4%	19.7%	42.9%	30.7%	26.5%	30.2%	48.3%	41.3%	29.0%
20-64	58.9%	61.4%	70.7%	50.8%	59.3%	73.5%	60.5%	46.1%	54.9%	57.6%
65+	19.5%	11.2%	9.6%	6.3%	10.0%	0.0%	9.3%	5.6%	3.8%	13.4%
85+	3.2%	0.9%	1.6%	0.6%	0.7%	0.0%	0.0%	0.7%	0.3%	2.1%
D. Racial and Ethnic Mix for Each Age Group										
2000										
0-19	50.0%	4.5%	1.9%	4.4%	0.7%	0.0%	0.2%	3.5%	39.3%	100.0%
20-64	66.9%	2.6%	1.9%	2.9%	0.8%	0.1%	0.1%	1.9%	25.7%	100.0%
65+	89.8%	1.5%	1.1%	1.4%	0.4%	0.0%	0.0%	1.0%	6.1%	100.0%
85+	93.8%	0.8%	0.8%	1.7%	0.8%	0.0%	0.0%	0.8%	2.8%	100.0%
2010										
0-19	43.8%	1.7%	1.3%	4.1%	0.5%	0.2%	0.2%	3.3%	49.1%	100.0%
20-64	60.5%	1.9%	2.3%	2.5%	0.5%	0.2%	0.2%	1.6%	32.9%	100.0%
65+	86.1%	1.5%	1.3%	1.3%	0.4%	0.0%	0.1%	0.8%	9.8%	100.0%
85+	92.5%	0.8%	1.5%	0.8%	0.2%	0.0%	0.0%	0.7%	4.4%	100.0%
E. Population Growth										
2000-10, Change										
0-19	-364	-231	-45	-6	-8	10	-4	-4	980	334
20-64	1,859	0	151	51	-19	25	14	31	2,367	4,428
65+	510	9	16	6	3	0	3	0	193	734
85+	237	2	6	-1	-2	0	0	1	17	261
Total	2,005	-222	122	51	-24	35	13	27	3,540	5,496
2000-10, % Change										
0-19	-8.8%	-61.4%	-29.2%	-1.7%	-14.8%	333.3%	-23.5%	-1.4%	30.0%	4.0%
20-64	21.8%	0.0%	63.2%	13.7%	-17.6%	227.3%	116.7%	12.9%	72.3%	34.8%
65+	17.4%	18.0%	43.2%	13.0%	25.0%	N/A	300.0%	0.0%	97.0%	22.5%
85+	71.4%	66.7%	200.0%	-16.7%	-66.7%	N/A	N/A	33.3%	170.0%	73.7%
Total	12.9%	-29.6%	28.4%	6.5%	-13.8%	250.0%	43.3%	4.8%	52.6%	22.6%

Source: US Census 2010, 2000

	White, Non- Hispanic	Black, Non- Hispanic	Asian, Non- Hispanic	Other, Non- Hispanic	Detail for Other, Non-Hispanic				Hispanic or Latino	Total Population 2010
					American Indian & Alaska Native	Native Hawaiian & Pacific Islander	Some Other Race	Two or More Races		
F. Population by Library-Defined Age Groups, 2010										
0-5	1,152	43	29	111	9	3	2	97	1,428	2,763
6-10	967	33	32	87	15	6	3	63	1,072	2,191
11-13	540	22	11	54	9	0	3	42	583	1,210
14-18	967	43	31	88	11	3	4	70	960	2,089
19-32	2,754	96	95	156	21	16	10	109	2,602	5,703
33-45	2,750	81	141	142	31	11	11	89	1,850	4,964
46-64	5,035	152	160	142	39	10	6	87	1,388	6,877
65-84	2,871	54	44	47	14	0	4	29	365	3,381
85+	569	5	9	5	1	0	0	4	27	615
Total	17,605	529	552	832	150	49	43	590	10,275	29,793
G. Population by 5-Year Age Brackets, 2010										
0-4	976	38	20	93	8	2	2	81	1,197	2,324
5-9	961	31	37	87	14	5	2	66	1,102	2,218
10-14	909	33	21	86	13	3	6	64	983	2,032
15-19	941	43	31	91	11	3	3	74	961	2,067
20-24	934	40	27	51	8	7	2	34	963	2,015
25-29	1,051	36	38	57	5	6	6	40	923	2,105
30-34	1,022	25	38	53	12	4	2	35	870	2,008
35-39	950	31	55	48	10	3	3	32	739	1,823
40-44	1,145	35	56	58	9	5	5	39	640	1,934
45-49	1,280	51	54	53	18	3	4	28	544	1,982
50-54	1,444	48	48	52	15	1	3	33	441	2,033
55-59	1,375	38	43	30	8	7	1	14	292	1,778
60-64	1,177	21	31	21	4	0	0	17	228	1,478
65-69	948	21	17	25	8	0	3	14	166	1,177
70-74	695	9	13	10	4	0	0	6	75	802
75-79	648	14	7	5	0	0	1	4	76	750
80-84	580	10	7	7	2	0	0	5	48	652
85-89	361	3	7	3	1	0	0	2	23	397
90-94	166	1	2	2	0	0	0	2	3	174
95-99	32	1	0	0	0	0	0	0	1	34
100+	10	0	0	0	0	0	0	0	0	10
Total	17,605	529	552	832	150	49	43	590	10,275	29,793
H. Median Age, 2000-10										
	White, Non- Hispanic	Black, Hispanic Inclusive	Asian, Hispanic Inclusive		American Indian & Alaska Native, Hispanic Inclusive	Native Hawaiian & Pacific Islander, Hispanic Inclusive	Some Other Race, Hispanic Inclusive	Two or More Races, Hispanic Inclusive	Hispanic or Latino	Total Population
2000	40.2	19.7	32.0		30.5	34.0	19.6	18.9	20.7	33.0
2010	44.6	32.8	39.5		32.2	28.0	25.0	19.1	24.6	35.3

Source: US Census 2010, 2000

Note: In the American Community Survey and for Census variables other than population, Hispanic origin is not broken out for all races.

I. Income Distribution, 2005-09			J. Median Household Income by Race and Ethnicity, 2005-09 (\$2009)						
Range (ths)	Households	% of Total	White, NH	Black	Asian	Hispanic	Total	% of CA	California
<\$10	592	5.6%	\$58,203	\$24,885	\$56,852	\$39,573	\$54,286	89.9%	\$60,392
\$10 to <\$25	1,596	15.0%							
\$25 to <\$50	2,687	25.2%							
\$50 to <\$75	2,421	22.7%							
\$75 to <\$100	1,368	12.9%							
\$100 to <\$150	1,316	12.4%							
\$150+	662	6.2%							
K. Household Type, 2000-10			2000	2000,%	2010	2010,%			
Total households			8,581	100.0%	10,833	100.0%			
Family Households			6,108	71.2%	7,669	70.8%			
Husband-wife w/children			2,293	26.7%	2,588	23.9%			
Female head, no husband, w/children			719	8.4%	775	7.2%			
Male head, no wife, w/children			227	2.6%	356	3.3%			
Without children			2,869	33.4%	3,950	36.5%			
Nonfamily households			2,473	28.8%	3,164	29.2%			
Living alone			2,018	23.5%	2,486	22.9%			
Other nonfamily			455	5.3%	678	6.3%	Source: US Census 2010, 2000		
L. Household Type by Race and Ethnicity, 2010			White, NH	Black	Asian	Hispanic	Total		
Total households			7,598	231	193	2,608	10,833		
Husband-wife family			51.2%	49.8%	50.3%	57.4%	52.8%		
Family with male head, no wife			4.1%	6.1%	4.7%	9.9%	5.6%		
Family with female head, no husband			10.5%	13.9%	14.0%	17.9%	12.4%		
Living alone			27.5%	22.9%	23.8%	10.1%	22.9%	Source: US	
Other nonfamily			6.6%	7.4%	7.3%	4.7%	6.3%	Census 2010	
M. Poverty, 2005-09							California		
<i>Percentage of families and people whose income in the past 12 months is below the poverty level</i>									
All families							10.6%	9.8%	
Families w/ related children under 18 years							16.9%	14.5%	
Families w/ female householder, no husband present							20.8%	24.2%	
Families w/ female householder, no husband present w/ related children under 18 years							29.0%	32.2%	
All people							12.7%	13.2%	
Under 18 years							18.3%	18.3%	
18 to 64 years							11.0%	11.9%	
65 years and over							7.8%	8.4%	
N. Educational Attainment, 2005-09			% at each level of educational attainment						
			White, NH	Black	Asian	Hispanic	Total		
Population 25 years and over			11,266	357	445	4,367	16,754		
Less than high school			6.7%	7.3%	27.2%	46.4%	17.4%		
High school graduate (includes equivalency)			23.2%	40.1%	12.4%	26.6%	23.9%		
Some college or associate's degree			42.6%	30.5%	19.8%	20.0%	36.4%		
Bachelor's degree or higher			27.5%	22.1%	40.7%	7.0%	22.3%		
O. Employment Status, 2010-11			2010	June 2011					
In civilian labor force			12,900	13,100					
Employed			11,400	11,600					
Unemployed, % of labor force			12.0%	11.8%	Source: CA Employment Development Department				
P. Occupation, 2005-09			Estimate		Percent				
Civilian employed population, 16 yrs & over			12,627		100.0%				
Management, professional, and related occupations			3,399		26.9%				
Service occupations			2,603		20.6%				
Sales and office occupations			3,149		24.9%				
Farming, fishing, and forestry occupations			503		4.0%				
Construction, extraction, maintenance, and repair occupations			1,619		12.8%				
Production, transportation, and material moving occupations			1,354		10.7%				
Q. Class of Worker, 2005-09			Estimate		Percent				
Civilian employed population, 16 yrs & over			12,627		100.0%				
Private, for profit, wage and salary employee			7,855		62.2%				
Private, not for profit, wage and salary employee			460		3.6%				
Private, for profit, wage and salary self-employed in own business			321		2.5%				
Government workers			2,470		19.6%				
Self-employed in own not incorporated business			1,492		11.8%				
Unpaid family workers in family business			29		0.2%				

Source: American Community Survey 2005-09, unless otherwise stated

ProfileTemplate 9-8-11.xlsr 9/9/2011 16:51

Note: In the American Community Survey and for US Census variables other than population, Hispanic origin is not broken out for all races. White, NH represents White, Non-Hispanic. Black and Asian are Hispanic inclusive.