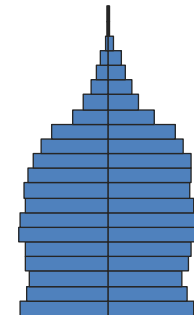


Highlights



Population by Age

Population Growth: The total population of Richmond increased by 5% over the past decade to 104,000. The greatest gain occurred in the Hispanic population, which increased by 15,000 people (55%). Despite the overall growth, declines occurred in the black population (-8,000 people, -24%), and the white, non-Hispanic population (-3,000 people, -16%).

Diversity: The racial and ethnic composition of Richmond has shifted over the past decade, with the Hispanic population replacing the black population as the largest. The Hispanic share of the population increased from 27% to 39% of the total over the past ten years, while the black share fell from 36% to 26%. Race and ethnicity vary substantially by age—the young population is majority Hispanic, while the population age 65+ is about one-third black and one-third white, non-Hispanic.

Age Structure: The age structure in Richmond is similar to that of California overall. The median age increased from 33 to 35 due mainly to a decrease in the number of young people.

Income: Median household income is \$55,000, 9% below the California median of \$60,000. The unemployment rate in Richmond, 18% in June 2011, is much higher than in California overall.

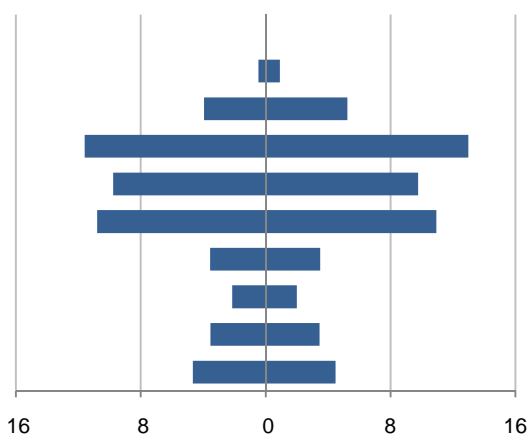
Foreign Born: Richmond has a large foreign-born population making up 32% of the total, much higher than the statewide 27% share. A higher share of Richmond’s immigrants are from Latin American countries other than Mexico, than is true statewide—23% here compared with 11% overall. Also, 11% of households are linguistically isolated, roughly the same as the share statewide.

This demographic profile is part of a series of library jurisdiction profiles prepared for the California State Library by the Stanford Center on Longevity. The project, "Understanding California's Shifting Demographics," was supported in whole by the U.S. Institute of Museum and Library Services under the provisions of the Library Services and Technology Act, administered in California by the State Librarian. The opinions expressed herein do not necessarily reflect the position or policy of the U.S. Institute of Museum and Library Services or the California State Library, and no official endorsement by the U.S. Institute of Museum and Library Services or the California State Library should be inferred.

Key Indicators			
		2000	2010
Population Growth			
	Total population	99,216	103,701
	10-year growth	13.5%	4.5%
Diversity			
	% Hispanic	26.5%	39.5%
	% Asian, non-Hispanic	12.2%	13.3%
	% White, non-Hispanic	21.2%	17.1%
	% Black, non-Hispanic	35.6%	25.9%
Aging			
	% 65+	9.9%	10.2%
	Median age	32.8	34.8
Households			
	% Married couple with children	21.6%	19.2%
	% Living alone	25.9%	26.4%

1. Population by Library-Defined Age Group, 2010

In thousands; males on left, females on right

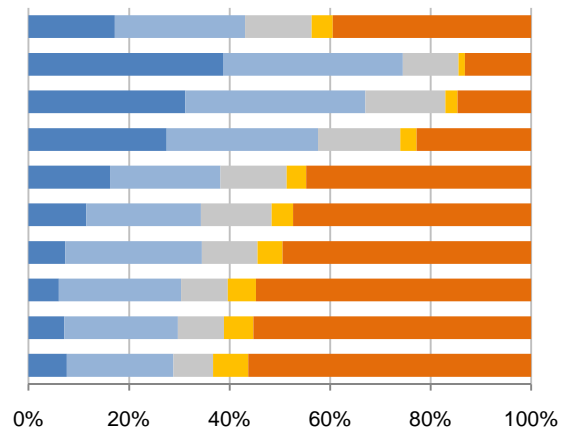


2. Race and Ethnicity by Library-Defined Age Group, 2010

White,NH Black,NH Asian,NH Other,NH Hispanic

Age group

Total
85+, Oldest
65 to 84, Older adults
46 to 64, Midlife
33 to 45, Adult
19 to 32, Young
14 to 18, Teens
11 to 13, Tweens
6 to 10, School age
0 to 5, Infants/toddlers

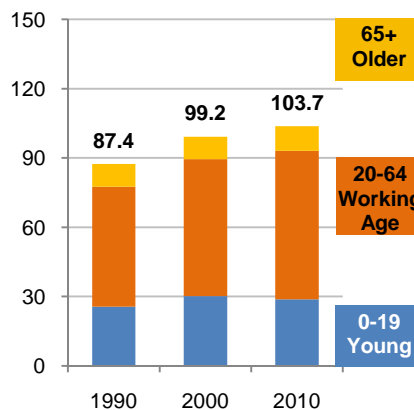


3. Population Growth by Library-Defined Age Group, 2000-10

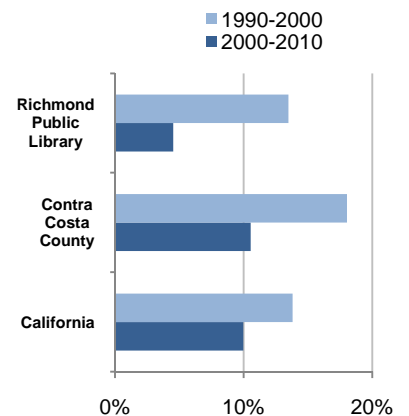
	2010	Change	% Change
Total	103,701	4,485	4.5%
85+	1,386	295	27.0%
65 to 84	9,196	481	5.5%
46 to 64	24,567	5,025	25.7%
33 to 45	19,528	-366	-1.8%
19 to 32	21,723	581	2.7%
14 to 18	7,050	317	4.7%
11 to 13	4,126	-410	-9.0%
6 to 10	6,985	-1,334	-16.0%
0 to 5	9,140	-104	-1.1%

4. Population Total, 1990-2010

In thousands



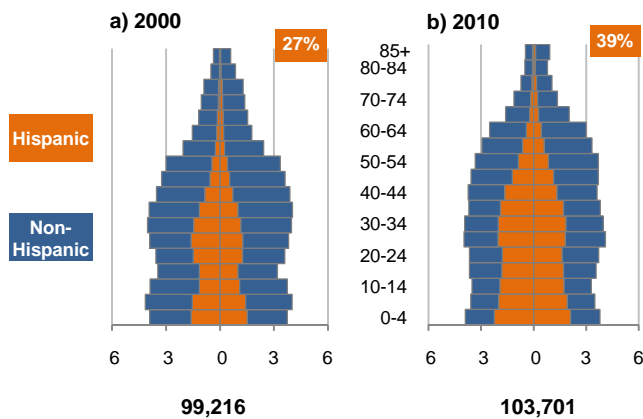
5. 10-Year Population Change



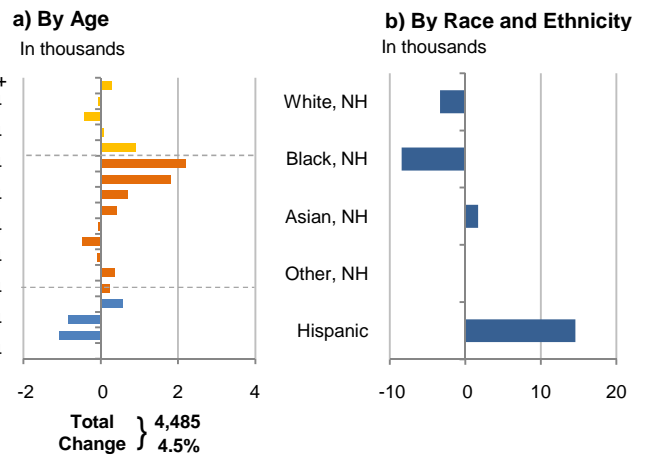
Source: US Census 2010, 2000, or 1990

6. Population by 5-Year Age Brackets

In thousands; males on left, females on right

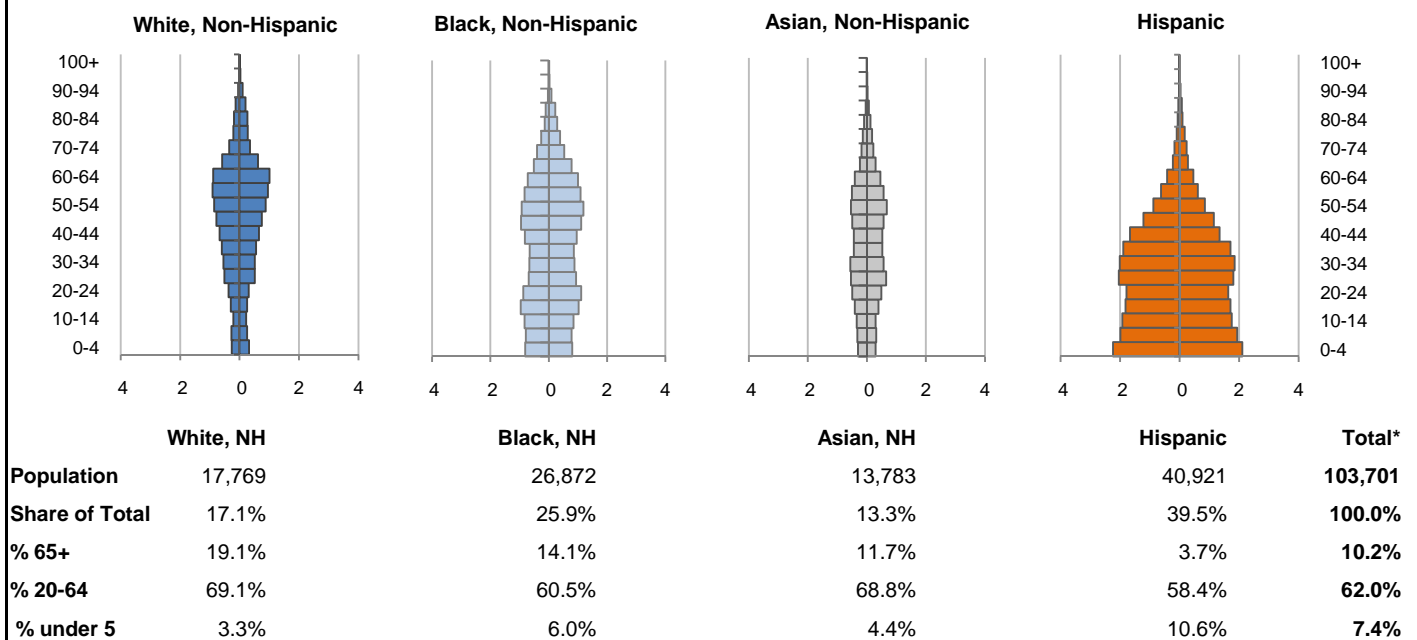


7. 10-Year Change in Population, 2000-10

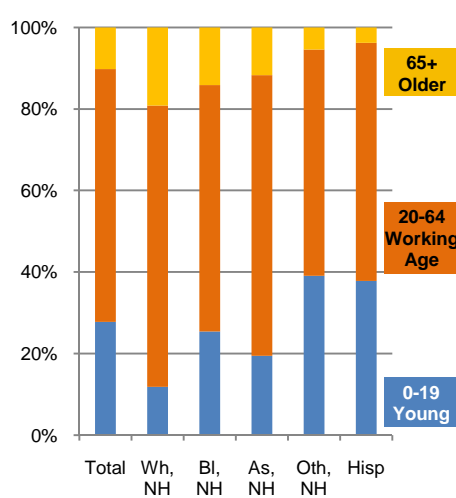


8. Population by Age, Race, and Ethnicity, 2010

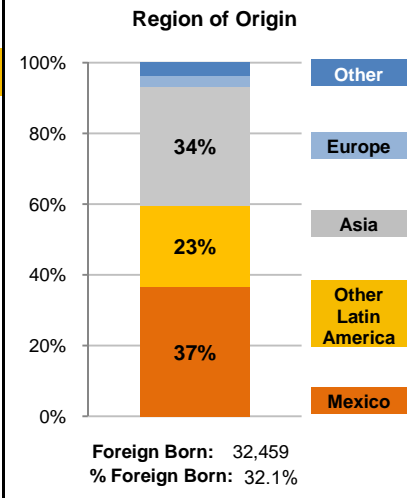
In thousands; males on left, females on right



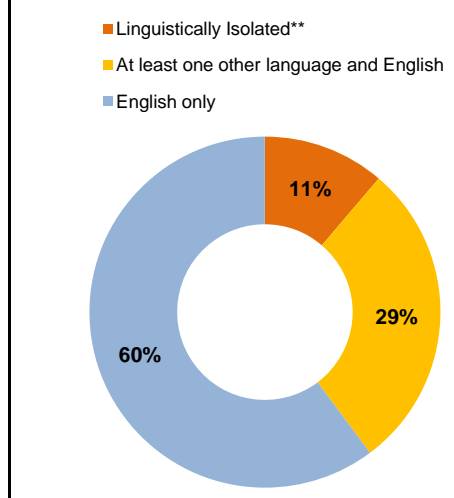
9. Age Mix by Race and Ethnicity, 2010



10. Foreign Born, 2005-09



11. Household Language, 2005-09

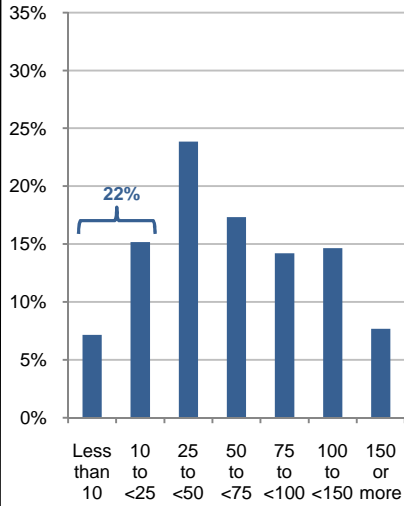


Wh=White; BI=Black; As=Asian; Oth=Other Race or Two or More Races; Hisp=Hispanic; NH=Non-Hispanic; ACS=American Community Survey 2005-09
*See pages 5-6 for detail on Other, Non-Hispanic
**Linguistically Isolated = No one in the household age 14 and over speaks English at least "very well"

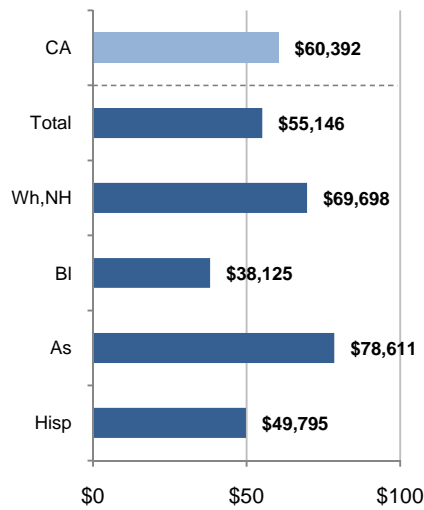
12. Household Income, 2005-09

In thousands of \$ (2009)

a) Income Distribution



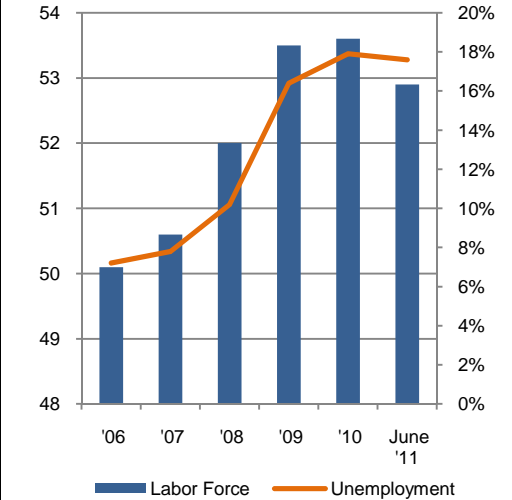
b) Median Household Income by Race and Ethnicity*



13. Labor Force and Unemployment, 2006-11

Labor Force
In thousands

Unemployment Rate

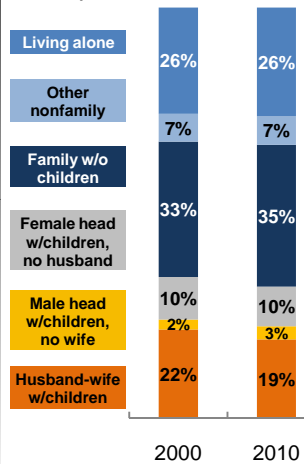


Source: CA Employment Development Department

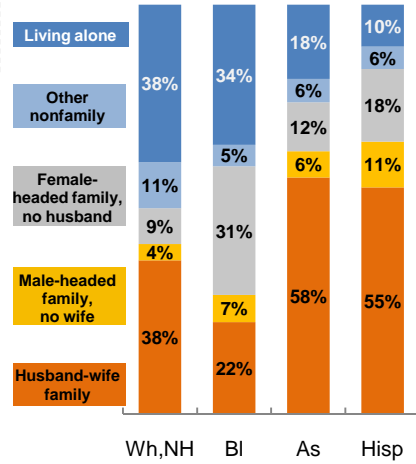
14. Household Type, 2010

% of all households

a) Total, 2000-10

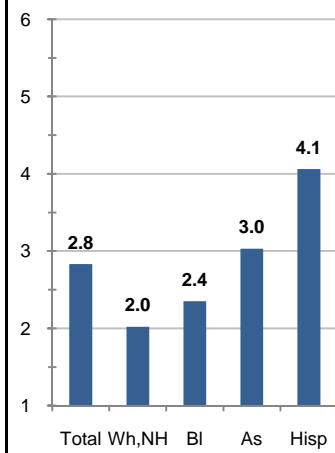


b) By Race and Ethnicity,* 2010

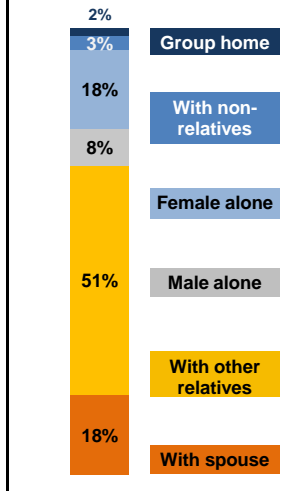


15. Average Household Size, 2010

By Race and Ethnicity*



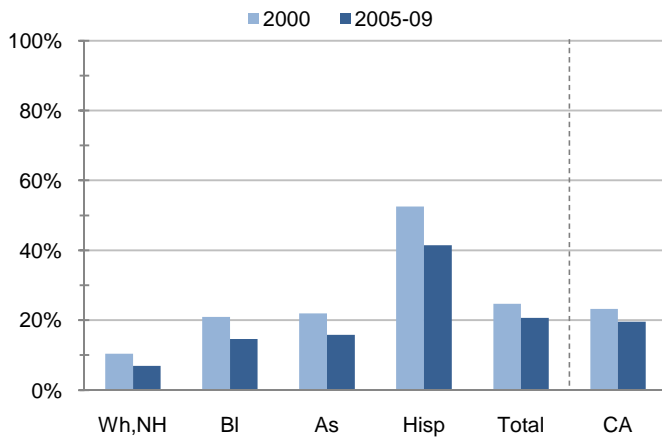
16. Living Arrangements Age 65+, 2005-09



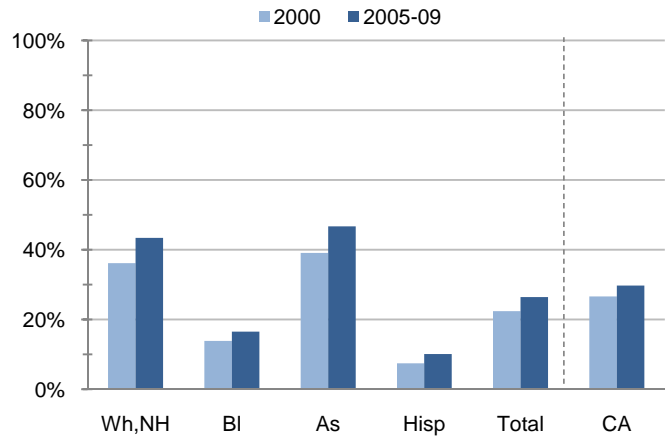
Source: ACS 2005-09

17. Educational Attainment for the Population Age 25 and Over by Race and Ethnicity*

a) % of Adults Who Did Not Complete High School



b) % of Adults Who Attained a BA or Higher



Source: Census 2000, ACS 2005-09

*Wh,NH=White,Non-Hispanic; BI=Black,Hispanic Inclusive; As=Asian,Hispanic Inclusive; Hisp=Hispanic(Includes all races); CA=California Total

Note: In the American Community Survey and for Census variables other than population, Hispanic origin is not broken out for all races.

	White, Non- Hispanic	Black, Non- Hispanic	Asian, Non- Hispanic	Other, Non- Hispanic	Detail for Other, Non-Hispanic				Hispanic or Latino	Total Population
					American Indian & Alaska Native	Native Hawaiian & Pacific Islander	Some Other Race	Two or More Races		
A. Total Population										
2000 Total	21,081	35,279	12,077	4,460	351	476	400	3,233	26,319	99,216
2000 % of Total	21.2%	35.6%	12.2%	4.5%	0.4%	0.5%	0.4%	3.3%	26.5%	100.0%
2010 Total	17,769	26,872	13,783	4,356	250	462	585	3,059	40,921	103,701
2010 % of Total	17.1%	25.9%	13.3%	4.2%	0.2%	0.4%	0.6%	2.9%	39.5%	100.0%
B. Population in Major Age Groups by Race and Ethnicity										
2000										
0-19	2,953	11,645	3,219	1,807	99	177	148	1,383	10,501	30,125
20-64	14,340	19,949	7,740	2,379	214	276	225	1,664	14,877	59,285
65+	3,788	3,685	1,118	274	38	23	27	186	941	9,806
85+	545	365	81	27	5	3	2	17	73	1,091
2010										
0-19	2,094	6,831	2,683	1,702	56	133	180	1,333	15,470	28,780
20-64	12,273	16,249	9,481	2,418	165	297	386	1,570	23,918	64,339
65+	3,402	3,792	1,619	236	29	32	19	156	1,533	10,582
85+	536	496	154	17	2	1	2	12	183	1,386
C. Age Mix for Each Racial and Ethnic Group										
2000										
0-19	14.0%	33.0%	26.7%	40.5%	28.2%	37.2%	37.0%	42.8%	39.9%	30.4%
20-64	68.0%	56.5%	64.1%	53.3%	61.0%	58.0%	56.3%	51.5%	56.5%	59.8%
65+	18.0%	10.4%	9.3%	6.1%	10.8%	4.8%	6.8%	5.8%	3.6%	9.9%
85+	2.6%	1.0%	0.7%	0.6%	1.4%	0.6%	0.5%	0.5%	0.3%	1.1%
2010										
0-19	11.8%	25.4%	19.5%	39.1%	22.4%	28.8%	30.8%	43.6%	37.8%	27.8%
20-64	69.1%	60.5%	68.8%	55.5%	66.0%	64.3%	66.0%	51.3%	58.4%	62.0%
65+	19.1%	14.1%	11.7%	5.4%	11.6%	6.9%	3.2%	5.1%	3.7%	10.2%
85+	3.0%	1.8%	1.1%	0.4%	0.8%	0.2%	0.3%	0.4%	0.4%	1.3%
D. Racial and Ethnic Mix for Each Age Group										
2000										
0-19	9.8%	38.7%	10.7%	6.0%	0.3%	0.6%	0.5%	4.6%	34.9%	100.0%
20-64	24.2%	33.6%	13.1%	4.0%	0.4%	0.5%	0.4%	2.8%	25.1%	100.0%
65+	38.6%	37.6%	11.4%	2.8%	0.4%	0.2%	0.3%	1.9%	9.6%	100.0%
85+	50.0%	33.5%	7.4%	2.5%	0.5%	0.3%	0.2%	1.6%	6.7%	100.0%
2010										
0-19	7.3%	23.7%	9.3%	5.9%	0.2%	0.5%	0.6%	4.6%	53.8%	100.0%
20-64	19.1%	25.3%	14.7%	3.8%	0.3%	0.5%	0.6%	2.4%	37.2%	100.0%
65+	32.1%	35.8%	15.3%	2.2%	0.3%	0.3%	0.2%	1.5%	14.5%	100.0%
85+	38.7%	35.8%	11.1%	1.2%	0.1%	0.1%	0.1%	0.9%	13.2%	100.0%
E. Population Growth										
2000-10, Change										
0-19	-859	-4,814	-536	-105	-43	-44	32	-50	4,969	-1,345
20-64	-2,067	-3,700	1,741	39	-49	21	161	-94	9,041	5,054
65+	-386	107	501	-38	-9	9	-8	-30	592	776
85+	-9	131	73	-10	-3	-2	0	-5	110	295
Total	-3,312	-8,407	1,706	-104	-101	-14	185	-174	14,602	4,485
2000-10, % Change										
0-19	-29.1%	-41.3%	-16.7%	-5.8%	-43.4%	-24.9%	21.6%	-3.6%	47.3%	-4.5%
20-64	-14.4%	-18.5%	22.5%	1.6%	-22.9%	7.6%	71.6%	-5.6%	60.8%	8.5%
65+	-10.2%	2.9%	44.8%	-13.9%	-23.7%	39.1%	-29.6%	-16.1%	62.9%	7.9%
85+	-1.7%	35.9%	90.1%	-37.0%	-60.0%	-66.7%	0.0%	-29.4%	150.7%	27.0%
Total	-15.7%	-23.8%	14.1%	-2.3%	-28.8%	-2.9%	46.3%	-5.4%	55.5%	4.5%

Source: US Census 2010, 2000

	White, Non- Hispanic	Black, Non- Hispanic	Asian, Non- Hispanic	Other, Non- Hispanic	Detail for Other, Non-Hispanic				Hispanic or Latino	Total Population 2010
					American Indian & Alaska Native	Native Hawaiian & Pacific Islander	Some Other Race	Two or More Races		
F. Population by Library-Defined Age Groups, 2010										
0-5	699	1,933	722	643	23	40	69	511	5,143	9,140
6-10	495	1,581	638	410	9	32	41	328	3,861	6,985
11-13	249	1,002	385	231	3	23	19	186	2,259	4,126
14-18	515	1,918	778	352	15	31	42	264	3,487	7,050
19-32	2,495	4,961	3,043	936	51	111	153	621	10,288	21,723
33-45	3,163	4,287	2,578	758	42	87	143	486	8,742	19,528
46-64	6,751	7,398	4,020	790	78	106	99	507	5,608	24,567
65-84	2,866	3,296	1,465	219	27	31	17	144	1,350	9,196
85+	536	496	154	17	2	1	2	12	183	1,386
Total	17,769	26,872	13,783	4,356	250	462	585	3,059	40,921	103,701
G. Population by 5-Year Age Brackets, 2010										
0-4	583	1,607	600	549	18	40	58	433	4,340	7,679
5-9	525	1,567	644	415	12	23	41	339	3,924	7,075
10-14	431	1,675	637	387	7	41	37	302	3,674	6,804
15-19	555	1,982	802	351	19	29	44	259	3,532	7,222
20-24	684	1,975	991	311	17	33	45	216	3,423	7,384
25-29	1,026	1,622	1,189	385	15	53	71	246	3,850	8,072
30-34	1,062	1,548	1,126	313	20	32	61	200	3,861	7,910
35-39	1,152	1,507	974	275	13	25	51	186	3,594	7,502
40-44	1,330	1,774	964	291	20	43	47	181	3,003	7,362
45-49	1,529	2,058	1,070	258	19	31	42	166	2,362	7,277
50-54	1,735	2,124	1,213	240	25	27	32	156	1,721	7,033
55-59	1,857	1,916	1,080	202	19	33	20	130	1,230	6,285
60-64	1,898	1,725	874	143	17	20	17	89	874	5,514
65-69	1,208	1,291	537	85	10	14	11	50	502	3,623
70-74	709	935	396	53	14	6	0	33	402	2,495
75-79	490	640	314	51	2	4	6	39	278	1,773
80-84	459	430	218	30	1	7	0	22	168	1,305
85-89	339	334	107	12	1	1	2	8	116	908
90-94	155	125	33	5	1	0	0	4	49	367
95-99	40	29	12	0	0	0	0	0	15	96
100+	2	8	2	0	0	0	0	0	3	15
Total	17,769	26,872	13,783	4,356	250	462	585	3,059	40,921	103,701
H. Median Age, 2000-10										
	White, Non- Hispanic	Black, Hispanic Inclusive	Asian, Hispanic Inclusive		American Indian & Alaska Native, Hispanic Inclusive	Native Hawaiian & Pacific Islander, Hispanic Inclusive	Some Other Race, Hispanic Inclusive	Two or More Races, Hispanic Inclusive	Hispanic or Latino	Total Population
2000	45.1	33.3	33.4		32.6	27.6	24.8	23.4	24.9	32.8
2010	50.0	39.3	39.4		34.9	29.6	26.8	23.8	27.1	34.8

Source: US Census 2010, 2000

Note: In the American Community Survey and for Census variables other than population, Hispanic origin is not broken out for all races.

I. Income Distribution, 2005-09			J. Median Household Income by Race and Ethnicity, 2005-09 (\$2009)							
Range (ths)	Households	% of Total	White, NH	Black	Asian	Hispanic	Total	% of CA	California	
<\$10	2,488	7.2%	\$69,698	\$38,125	\$78,611	\$49,795	\$55,146	91.3%	\$60,392	
\$10 to <\$25	5,277	15.2%								
\$25 to <\$50	8,301	23.9%								
\$50 to <\$75	6,027	17.3%								
\$75 to <\$100	4,938	14.2%								
\$100 to <\$150	5,091	14.6%								
\$150+	2,673	7.7%								
K. Household Type, 2000-10			2000	2000,%	2010	2010,%				
Total households			34,752	100.0%	36,093	100.0%				
Family Households			23,403	67.3%	24,018	66.5%				
Husband-wife w/children			7,505	21.6%	6,915	19.2%				
Female head, no husband, w/children			3,583	10.3%	3,493	9.7%				
Male head, no wife, w/children			838	2.4%	1,148	3.2%				
Without children			11,477	33.0%	12,462	34.5%				
Nonfamily households			11,349	32.7%	12,075	33.5%				
Living alone			8,996	25.9%	9,546	26.4%				
Other nonfamily			2,353	6.8%	2,529	7.0%	Source: US Census 2010, 2000			
L. Household Type by Race and Ethnicity, 2010			White, NH	Black	Asian	Hispanic	Total			
Total households			9,090	11,518	4,565	9,825	36,093			
Husband-wife family			37.6%	22.5%	57.8%	55.4%	40.2%			
Family with male head, no wife			4.0%	6.7%	6.4%	11.2%	7.2%			
Family with female head, no husband			8.7%	31.4%	11.9%	17.8%	19.2%			
Living alone			38.5%	34.2%	18.1%	10.2%	26.4%	Source: US		
Other nonfamily			11.3%	5.2%	5.7%	5.5%	7.0%	Census 2010		
M. Poverty, 2005-09			Percentage of families and people whose income in the past 12 months is below the poverty level						California	
All families									12.6%	9.8%
Families w/ related children under 18 years									18.9%	14.5%
Families w/ female householder, no husband present									30.0%	24.2%
Families w/ female householder, no husband present w/ related children under 18 years									40.1%	32.2%
All people									15.4%	13.2%
Under 18 years									20.2%	18.3%
18 to 64 years									14.7%	11.9%
65 years and over									7.9%	8.4%
N. Educational Attainment, 2005-09			% at each level of educational attainment							
			White, NH	Black	Asian	Hispanic	Total			
Population 25 years and over			15,999	18,704	11,067	18,954	66,050			
Less than high school			6.9%	14.7%	15.8%	41.4%	20.6%			
High school graduate (includes equivalency)			19.0%	30.1%	13.0%	29.7%	24.3%			
Some college or associate's degree			30.7%	38.8%	24.5%	18.8%	28.6%			
Bachelor's degree or higher			43.4%	16.5%	46.7%	10.1%	26.4%			
O. Employment Status, 2010-11			2010	June 2011						
In civilian labor force			53,600	52,900						
Employed			44,000	43,600						
Unemployed, % of labor force			17.9%	17.6%	Source: CA Employment Development Department					
P. Occupation, 2005-09			Estimate		Percent					
Civilian employed population, 16 yrs & over			45,167		100.0%					
Management, professional, and related occupations			13,803		30.6%					
Service occupations			9,190		20.3%					
Sales and office occupations			12,206		27.0%					
Farming, fishing, and forestry occupations			97		0.2%					
Construction, extraction, maintenance, and repair occupations			4,594		10.2%					
Production, transportation, and material moving occupations			5,277		11.7%					
Q. Class of Worker, 2005-09			Estimate		Percent					
Civilian employed population, 16 yrs & over			45,167		100.0%					
Private, for profit, wage and salary employee			28,706		63.6%					
Private, not for profit, wage and salary employee			3,619		8.0%					
Private, for profit, wage and salary self-employed in own business			829		1.8%					
Government workers			8,088		17.9%					
Self-employed in own not incorporated business			3,831		8.5%					
Unpaid family workers in family business			94		0.2%					

Source: American Community Survey 2005-09, unless otherwise stated

ProfileTemplate 9-8-11.xlsr 9/11/2011 14:52

Note: In the American Community Survey and for US Census variables other than population, Hispanic origin is not broken out for all races. White, NH represents White, Non-Hispanic. Black and Asian are Hispanic inclusive.