

Highlights



Population Growth: The population of the Sacramento Public Library jurisdiction increased by 15% between 2000 and 2010 to more than 1.3 million; this growth was higher than the statewide growth rate of 10%. Growth was particularly high among the Hispanic (56%) and Asian (47%) populations.

Diversity: The population mix in the jurisdiction has shifted, with the white, non-Hispanic population share decreasing from 57% to 48%, the Hispanic share increasing from 16% to 22%, and the Asian share increasing from 11% to 14%.

Age Structure: The age structure of the jurisdiction closely resembles that of California as a whole and has shifted upward at a similar rate.

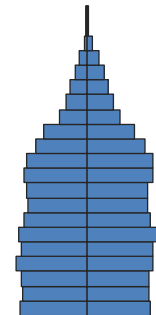
Households: Single-person households are more common in this jurisdiction (26%) than statewide (23%).

Education: Educational attainment is comparable to California overall. Fifteen percent did not complete high school compared with 20% statewide, and 27% have attained a Bachelor’s degree or higher, compared with 30% statewide.

Income: Household income also is comparable to state levels; 20% of households have income less than \$25,000 (the same as the statewide level) and 8% have income of \$150,000 and above (compared with 12% statewide).

Foreign Born: The foreign-born population accounts for 20% of the total population, compared with 27% statewide. Of the foreign born, the largest percentage (43%) are from Asia.

Note: The Sacramento Public Library jurisdiction includes the county population that is not located within the city of Folsom.



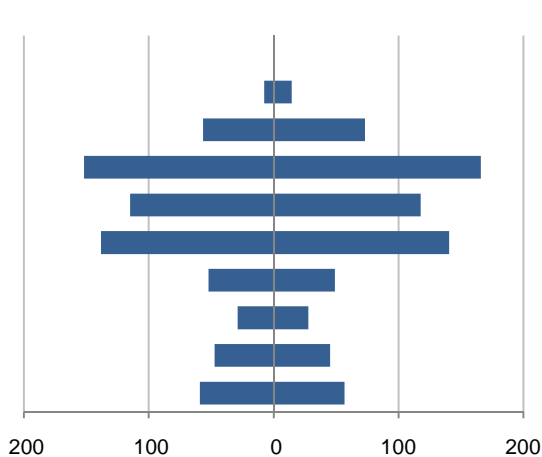
Population by Age

This demographic profile is part of a series of library jurisdiction profiles prepared for the California State Library by the Stanford Center on Longevity. The project, "Understanding California's Shifting Demographics," was supported in whole by the U.S. Institute of Museum and Library Services under the provisions of the Library Services and Technology Act, administered in California by the State Librarian. The opinions expressed herein do not necessarily reflect the position or policy of the U.S. Institute of Museum and Library Services or the California State Library, and no official endorsement by the U.S. Institute of Museum and Library Services or the California State Library should be inferred.

Key Indicators			
		2000	2010
Population Growth			
	Total population	1,171,615	1,346,585
	10-year growth	15.8%	14.9%
Diversity			
	% Hispanic	16.3%	22.1%
	% Asian, non-Hispanic	11.0%	14.1%
	% White, non-Hispanic	57.0%	47.5%
	% Black, non-Hispanic	9.8%	10.1%
Aging			
	% 65+	11.2%	11.3%
	Median age	#N/A	#N/A
Households			
	% Married couple with children	22.9%	20.6%
	% Living alone	26.8%	26.1%

1. Population by Library-Defined Age Group, 2010

In thousands; males on left, females on right

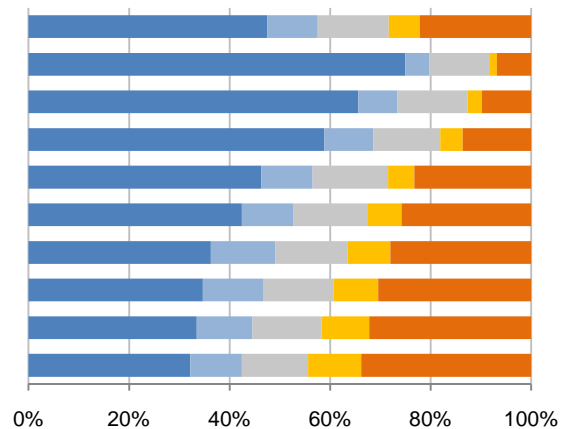


2. Race and Ethnicity by Library-Defined Age Group, 2010

White, NH Black, NH Asian, NH Other, NH Hispanic

Age group

- Total
- 85+, Oldest
- 65 to 84, Older adults
- 46 to 64, Midlife
- 33 to 45, Adult
- 19 to 32, Young
- 14 to 18, Teens
- 11 to 13, Tweens
- 6 to 10, School age
- 0 to 5, Infants/toddlers

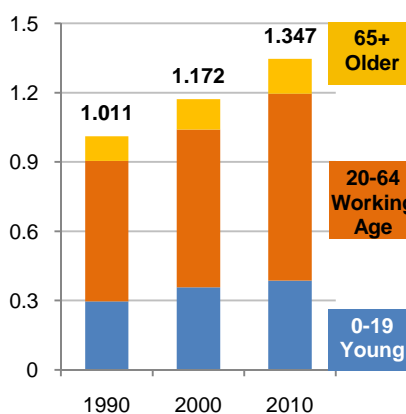


3. Population Growth by Library-Defined Age Group, 2000-10

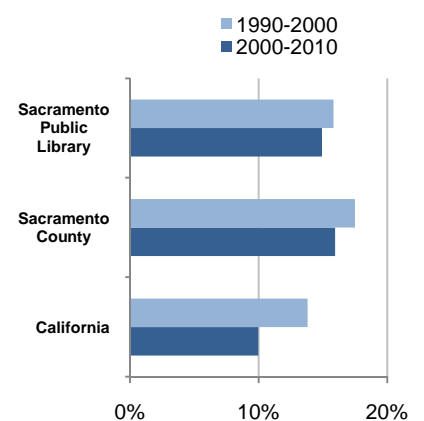
	2010	Change	% Change
Total	1,346,585	174,970	14.9%
85+	22,001	7,042	47.1%
65 to 84	129,641	13,294	11.4%
46 to 64	317,677	91,225	40.3%
33 to 45	232,555	-7,144	-3.0%
19 to 32	278,754	46,251	19.9%
14 to 18	101,154	14,203	16.3%
11 to 13	56,633	1,878	3.4%
6 to 10	92,411	-3,840	-4.0%
0 to 5	115,759	12,061	11.6%

4. Population Total, 1990-2010

In millions



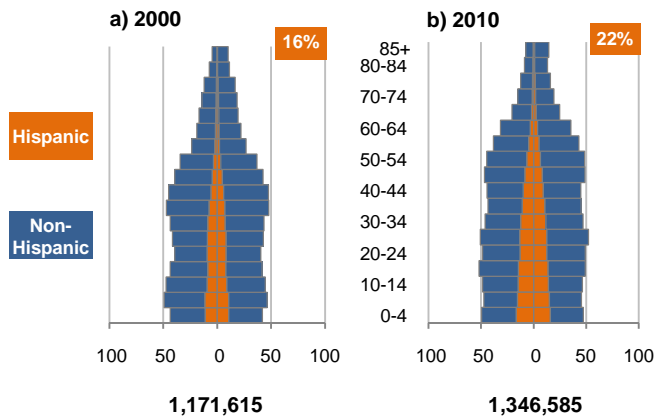
5. 10-Year Population Change



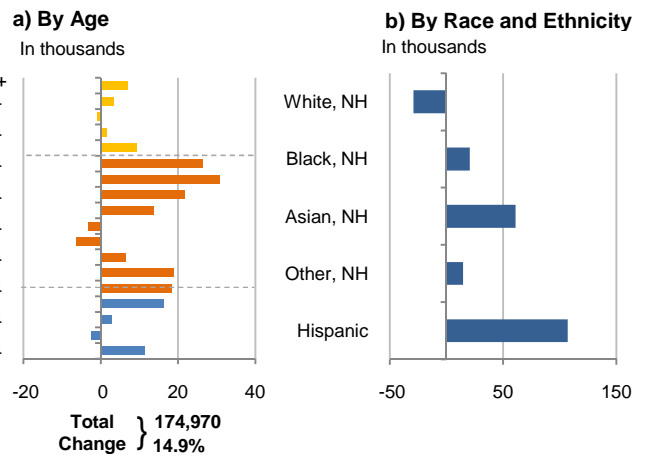
Source: US Census 2010, 2000, or 1990

6. Population by 5-Year Age Brackets

In thousands; males on left, females on right

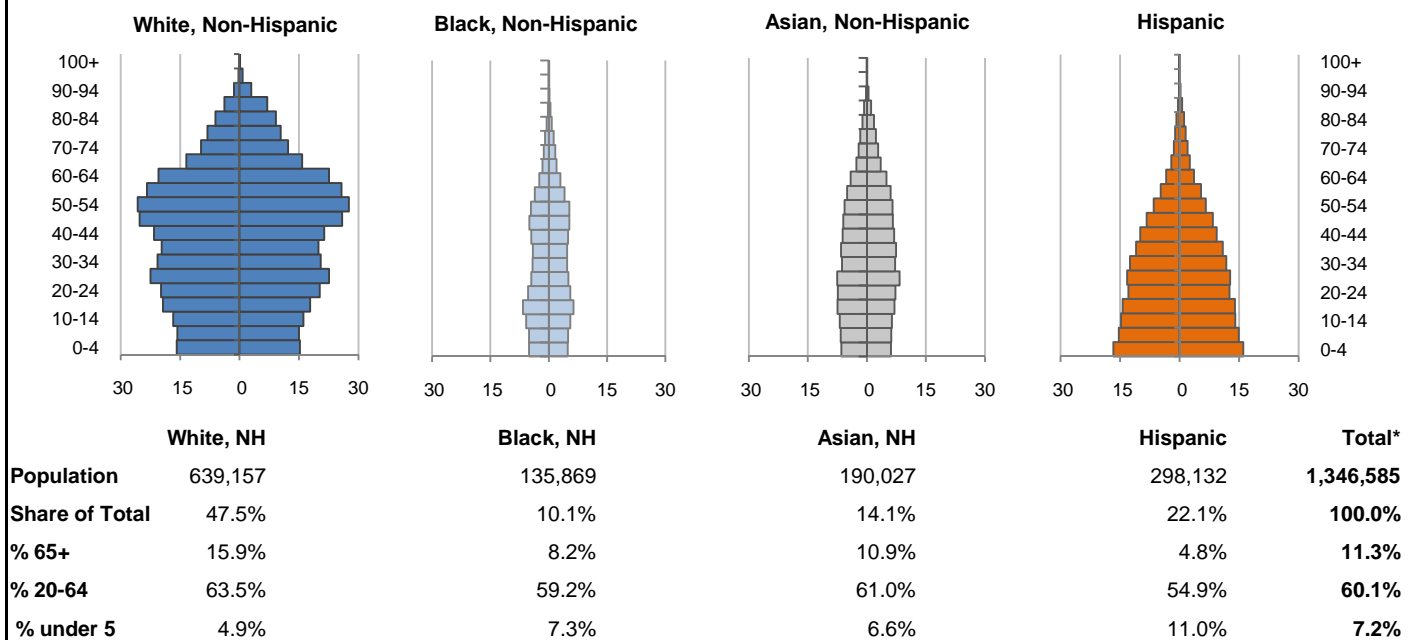


7. 10-Year Change in Population, 2000-10

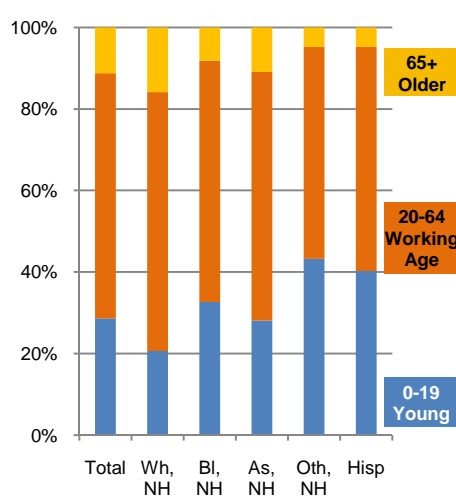


8. Population by Age, Race, and Ethnicity, 2010

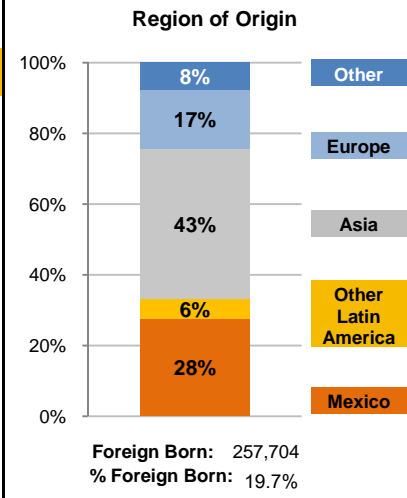
In thousands; males on left, females on right



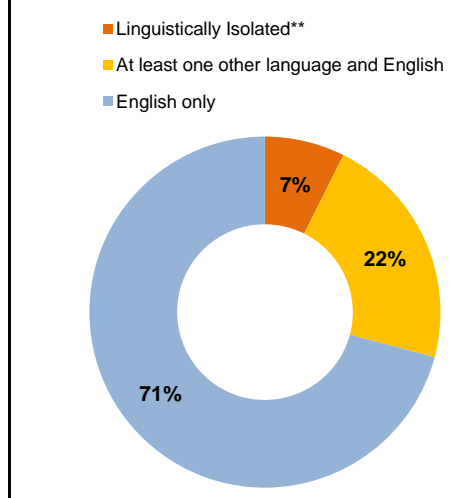
9. Age Mix by Race and Ethnicity, 2010



10. Foreign Born, 2005-09



11. Household Language, 2005-09

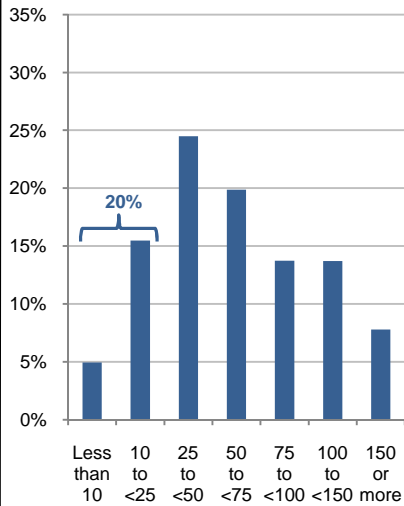


Wh=White; BI=Black; As=Asian; Oth=Other Race or Two or More Races; Hisp=Hispanic; NH=Non-Hispanic; ACS=American Community Survey 2005-09
*See pages 5-6 for detail on Other, Non-Hispanic
**Linguistically Isolated = No one in the household age 14 and over speaks English at least "very well"

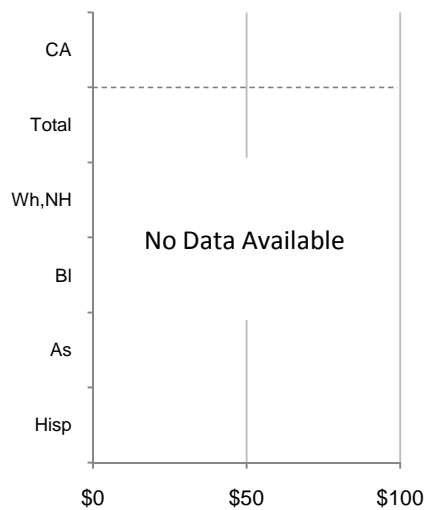
12. Household Income, 2005-09

In thousands of \$ (2009)

a) Income Distribution



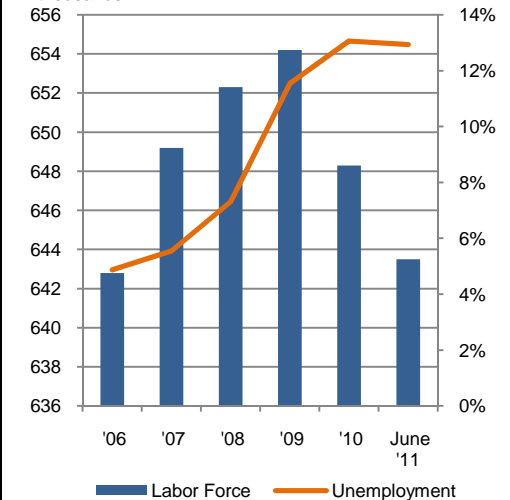
b) Median Household Income by Race and Ethnicity*



13. Labor Force and Unemployment, 2006-11

Labor Force In thousands

Unemployment Rate

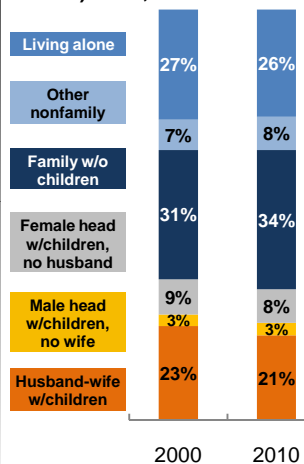


Source: CA Employment Development Department

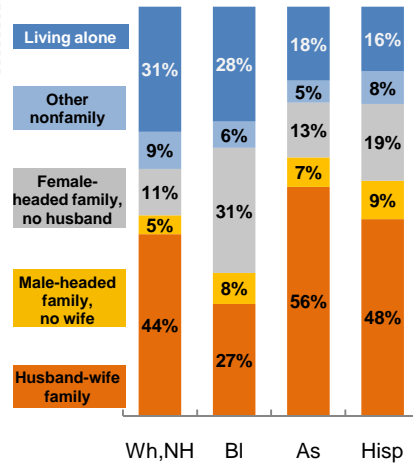
14. Household Type, 2010

% of all households

a) Total, 2000-10

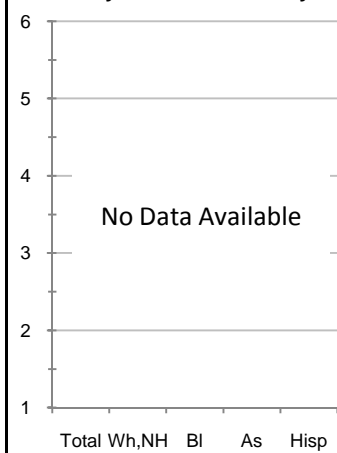


b) By Race and Ethnicity,* 2010

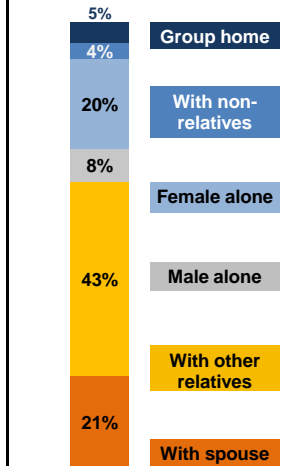


15. Average Household Size, 2010

By Race and Ethnicity*



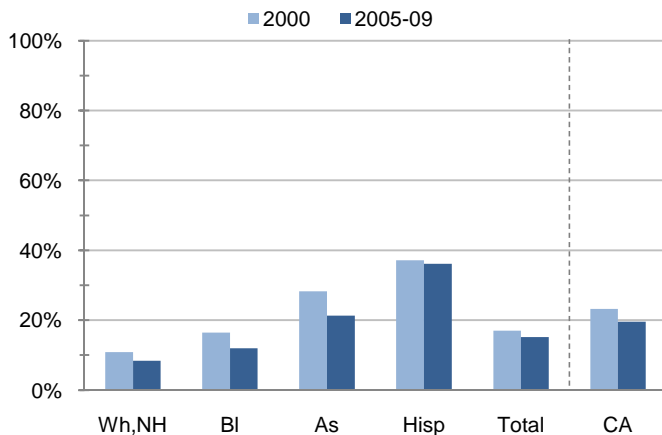
16. Living Arrangements Age 65+, 2005-09



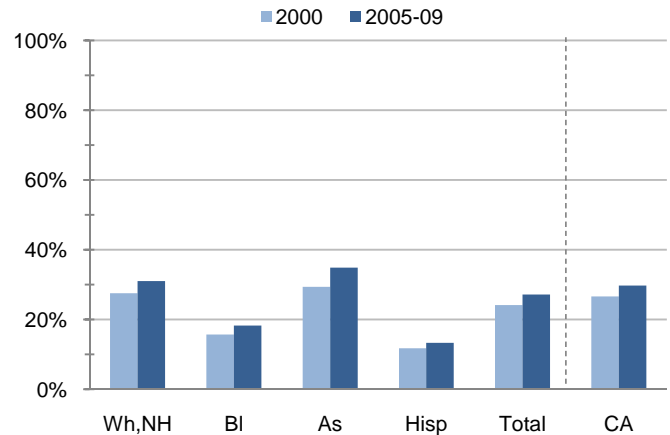
Source: ACS 2005-09

17. Educational Attainment for the Population Age 25 and Over by Race and Ethnicity*

a) % of Adults Who Did Not Complete High School



b) % of Adults Who Attained a BA or Higher



Source: Census 2000, ACS 2005-09

*Wh,NH=White, Non-Hispanic; BI=Black, Hispanic Inclusive; As=Asian, Hispanic Inclusive; Hisp=Hispanic (Includes all races); CA=California Total

Note: In the American Community Survey and for Census variables other than population, Hispanic origin is not broken out for all races.

	White, Non- Hispanic	Black, Non- Hispanic	Asian, Non- Hispanic	Other, Non- Hispanic	Detail for Other, Non-Hispanic				Hispanic or Latino	Total Population
					American Indian & Alaska Native	Native Hawaiian & Pacific Islander	Some Other Race	Two or More Races		
A. Total Population										
2000 Total	668,155	114,987	128,908	68,589	8,833	6,695	3,294	49,767	190,976	1,171,615
2000 % of Total	57.0%	9.8%	11.0%	5.9%	0.8%	0.6%	0.3%	4.2%	16.3%	100.0%
2010 Total	639,157	135,869	190,027	83,400	7,586	12,943	2,979	59,892	298,132	1,346,585
2010 % of Total	47.5%	10.1%	14.1%	6.2%	0.6%	1.0%	0.2%	4.4%	22.1%	100.0%
B. Population in Major Age Groups by Race and Ethnicity										
2000										
0-19	161,134	43,498	43,034	30,289	2,620	2,439	1,266	23,964	79,702	357,657
20-64	408,634	63,683	72,929	35,019	5,657	3,951	1,861	23,550	102,387	682,652
65+	98,387	7,806	12,945	3,281	556	305	167	2,253	8,887	131,306
85+	12,346	647	1,068	266	44	20	10	192	632	14,959
2010										
0-19	131,986	44,300	53,277	36,050	1,853	3,918	1,051	29,228	120,080	385,693
20-64	405,647	80,460	116,010	43,328	5,018	8,279	1,737	28,294	163,805	809,250
65+	101,524	11,109	20,740	4,022	715	746	191	2,370	14,247	151,642
85+	16,491	1,050	2,626	334	64	46	15	209	1,500	22,001
C. Age Mix for Each Racial and Ethnic Group										
2000										
0-19	24.1%	37.8%	33.4%	44.2%	29.7%	36.4%	38.4%	48.2%	41.7%	30.5%
20-64	61.2%	55.4%	56.6%	51.1%	64.0%	59.0%	56.5%	47.3%	53.6%	58.3%
65+	14.7%	6.8%	10.0%	4.8%	6.3%	4.6%	5.1%	4.5%	4.7%	11.2%
85+	1.8%	0.6%	0.8%	0.4%	0.5%	0.3%	0.3%	0.4%	0.3%	1.3%
2010										
0-19	20.7%	32.6%	28.0%	43.2%	24.4%	30.3%	35.3%	48.8%	40.3%	28.6%
20-64	63.5%	59.2%	61.0%	52.0%	66.1%	64.0%	58.3%	47.2%	54.9%	60.1%
65+	15.9%	8.2%	10.9%	4.8%	9.4%	5.8%	6.4%	4.0%	4.8%	11.3%
85+	2.6%	0.8%	1.4%	0.4%	0.8%	0.4%	0.5%	0.3%	0.5%	1.6%
D. Racial and Ethnic Mix for Each Age Group										
2000										
0-19	45.1%	12.2%	12.0%	8.5%	0.7%	0.7%	0.4%	6.7%	22.3%	100.0%
20-64	59.9%	9.3%	10.7%	5.1%	0.8%	0.6%	0.3%	3.4%	15.0%	100.0%
65+	74.9%	5.9%	9.9%	2.5%	0.4%	0.2%	0.1%	1.7%	6.8%	100.0%
85+	82.5%	4.3%	7.1%	1.8%	0.3%	0.1%	0.1%	1.3%	4.2%	100.0%
2010										
0-19	34.2%	11.5%	13.8%	9.3%	0.5%	1.0%	0.3%	7.6%	31.1%	100.0%
20-64	50.1%	9.9%	14.3%	5.4%	0.6%	1.0%	0.2%	3.5%	20.2%	100.0%
65+	66.9%	7.3%	13.7%	2.7%	0.5%	0.5%	0.1%	1.6%	9.4%	100.0%
85+	75.0%	4.8%	11.9%	1.5%	0.3%	0.2%	0.1%	0.9%	6.8%	100.0%
E. Population Growth										
2000-10, Change										
0-19	-29,148	802	10,243	5,761	-767	1,479	-215	5,264	40,378	28,036
20-64	-2,987	16,777	43,081	8,309	-639	4,328	-124	4,744	61,418	126,598
65+	3,137	3,303	7,795	741	159	441	24	117	5,360	20,336
85+	4,145	403	1,558	68	20	26	5	17	868	7,042
Total	-28,998	20,882	61,119	14,811	-1,247	6,248	-315	10,125	107,156	174,970
2000-10, % Change										
0-19	-18.1%	1.8%	23.8%	19.0%	-29.3%	60.6%	-17.0%	22.0%	50.7%	7.8%
20-64	-0.7%	26.3%	59.1%	23.7%	-11.3%	109.5%	-6.7%	20.1%	60.0%	18.5%
65+	3.2%	42.3%	60.2%	22.6%	28.6%	144.6%	14.4%	5.2%	60.3%	15.5%
85+	33.6%	62.3%	145.9%	25.6%	45.5%	130.0%	50.0%	8.9%	137.3%	47.1%
Total	-4.3%	18.2%	47.4%	21.6%	-14.1%	93.3%	-9.6%	20.3%	56.1%	14.9%

Source: US Census 2010, 2000

	White, Non- Hispanic	Black, Non- Hispanic	Asian, Non- Hispanic	Other, Non- Hispanic	Detail for Other, Non-Hispanic				Hispanic or Latino	Total Population 2010
					American Indian & Alaska Native	Native Hawaiian & Pacific Islander	Some Other Race	Two or More Races		
F. Population by Library-Defined Age Groups, 2010										
0-5	37,293	11,840	15,259	12,198	501	1,221	333	10,143	39,169	115,759
6-10	30,917	10,271	12,700	8,745	416	890	289	7,150	29,778	92,411
11-13	19,628	6,782	7,982	4,995	280	522	158	4,035	17,246	56,633
14-18	36,708	12,899	14,618	8,605	544	1,069	232	6,760	28,324	101,154
19-32	118,340	28,324	41,550	18,560	1,467	3,326	673	13,094	71,980	278,754
33-45	107,782	23,602	34,920	12,215	1,442	2,325	487	7,961	54,036	232,555
46-64	186,965	31,042	42,258	14,060	2,221	2,844	616	8,379	43,352	317,677
65-84	85,033	10,059	18,114	3,688	651	700	176	2,161	12,747	129,641
85+	16,491	1,050	2,626	334	64	46	15	209	1,500	22,001
Total	639,157	135,869	190,027	83,400	7,586	12,943	2,979	59,892	298,132	1,346,585
G. Population by 5-Year Age Brackets, 2010										
0-4	31,087	9,900	12,618	10,271	426	1,009	280	8,556	32,756	96,632
5-9	30,761	10,036	12,878	8,888	399	923	285	7,281	30,291	92,854
10-14	32,931	11,346	13,318	8,473	476	905	256	6,836	28,764	94,832
15-19	37,207	13,018	14,463	8,418	552	1,081	230	6,555	28,269	101,375
20-24	40,043	10,858	14,679	6,908	539	1,189	225	4,955	25,488	97,976
25-29	45,081	9,470	15,882	6,603	515	1,267	259	4,562	25,998	103,034
30-34	41,155	8,866	13,517	5,687	508	1,048	237	3,894	24,224	93,449
35-39	39,613	8,728	14,000	4,656	517	866	179	3,094	21,804	88,801
40-44	43,013	9,410	13,043	4,439	575	873	191	2,800	19,270	89,175
45-49	51,131	10,282	12,542	4,857	671	987	173	3,026	16,728	95,540
50-54	53,405	9,835	12,189	4,476	696	920	194	2,666	13,119	93,024
55-59	49,107	7,586	11,024	3,304	567	642	169	1,926	10,152	81,173
60-64	43,099	5,425	9,134	2,398	430	487	110	1,371	7,022	67,078
65-69	29,239	3,610	6,165	1,595	267	337	73	918	4,676	45,285
70-74	21,972	2,956	4,983	945	173	176	40	556	3,485	34,341
75-79	18,516	2,216	3,960	714	121	132	37	424	2,652	28,058
80-84	15,306	1,277	3,006	434	90	55	26	263	1,934	21,957
85-89	10,890	692	1,791	209	38	30	6	135	1,077	14,659
90-94	4,363	255	643	98	18	12	6	62	331	5,690
95-99	1,094	82	170	24	8	4	1	11	83	1,453
100+	144	21	22	3	0	0	2	1	9	199
Total	639,157	135,869	190,027	83,400	7,586	12,943	2,979	59,892	298,132	1,346,585
H. Median Age, 2000-10										
	White, Non- Hispanic	Black, Hispanic Inclusive	Asian, Hispanic Inclusive		American Indian & Alaska Native, Hispanic Inclusive	Native Hawaiian & Pacific Islander, Hispanic Inclusive	Some Other Race, Hispanic Inclusive	Two or More Races, Hispanic Inclusive	Hispanic or Latino	Total Population
2000	#N/A	#N/A	#N/A		#N/A	#N/A	#N/A	#N/A	#N/A	#N/A
2010	#N/A	#N/A	#N/A		#N/A	#N/A	#N/A	#N/A	#N/A	#N/A

Source: US Census 2010, 2000

Note: In the American Community Survey and for Census variables other than population, Hispanic origin is not broken out for all races.

I. Income Distribution, 2005-09			J. Median Household Income by Race and Ethnicity, 2005-09 (\$2009)						
Range (ths)	Households	% of Total	White, NH	Black	Asian	Hispanic	Total	% of CA	California
<\$10	23,766	4.9%	#N/A	#N/A	#N/A	#N/A	#N/A	#N/A	\$60,392
\$10 to <\$25	74,492	15.5%							
\$25 to <\$50	117,918	24.5%							
\$50 to <\$75	95,719	19.9%							
\$75 to <\$100	66,061	13.7%							
\$100 to <\$150	66,052	13.7%							
\$150+	37,534	7.8%							
K. Household Type, 2000-10			2000	2000,%	2010	2010,%			
Total households			436,621	100.0%	488,994	100.0%			
Family Households			287,207	65.8%	321,382	65.7%			
Husband-wife w/children			100,039	22.9%	100,781	20.6%			
Female head, no husband, w/children			37,729	8.6%	40,358	8.3%			
Male head, no wife, w/children			12,031	2.8%	14,820	3.0%			
Without children			137,408	31.5%	165,423	33.8%			
Nonfamily households			149,414	34.2%	167,612	34.3%			
Living alone			117,091	26.8%	127,638	26.1%			
Other nonfamily			32,323	7.4%	39,974	8.2%	Source: US Census 2010, 2000		
L. Household Type by Race and Ethnicity, 2010			White, NH	Black	Asian	Hispanic	Total		
Total households			279,295	52,552	57,519	79,434	488,994		
Husband-wife family			44.4%	27.4%	56.0%	48.1%	44.5%		
Family with male head, no wife			4.7%	7.5%	7.2%	9.4%	6.1%		
Family with female head, no husband			11.3%	30.6%	13.4%	18.8%	15.1%		
Living alone			30.6%	28.1%	18.0%	15.8%	26.1%	Source: US	
Other nonfamily			9.1%	6.4%	5.4%	8.0%	8.2%	Census 2010	
M. Poverty, 2005-09							California		
<i>Percentage of families and people whose income in the past 12 months is below the poverty level</i>									
All families							10.0%	9.8%	
Families w/ related children under 18 years							15.1%	14.5%	
Families w/ female householder, no husband present							22.5%	24.2%	
Families w/ female householder, no husband present w/ related children under 18 years							29.3%	32.2%	
All people							13.6%	13.2%	
Under 18 years							19.3%	18.3%	
18 to 64 years							12.3%	11.9%	
65 years and over							7.5%	8.4%	
N. Educational Attainment, 2005-09			% at each level of educational attainment						
			White, NH	Black	Asian	Hispanic	Total		
Population 25 years and over			482,178	75,910	113,177	136,852	839,578		
Less than high school			8.4%	11.9%	21.3%	36.1%	15.2%		
High school graduate (includes equivalency)			23.2%	25.6%	17.9%	24.4%	23.0%		
Some college or associate's degree			37.4%	44.2%	26.0%	26.2%	34.6%		
Bachelor's degree or higher			31.1%	18.3%	34.8%	13.3%	27.2%		
O. Employment Status, 2010-11			2010	June 2011					
In civilian labor force			648,300	643,500					
Employed			563,600	560,300					
Unemployed, % of labor force			13.1%	12.9%	Source: CA Employment Development Department				
P. Occupation, 2005-09			Estimate		Percent				
Civilian employed population, 16 yrs & over			595,088		100.0%				
Management, professional, and related occupations			214,687		36.1%				
Service occupations			103,268		17.4%				
Sales and office occupations			166,381		28.0%				
Farming, fishing, and forestry occupations			1,866		0.3%				
Construction, extraction, maintenance, and repair occupations			54,793		9.2%				
Production, transportation, and material moving occupations			54,093		9.1%				
Q. Class of Worker, 2005-09			Estimate		Percent				
Civilian employed population, 16 yrs & over			595,088		100.0%				
Private, for profit, wage and salary employee			363,314		61.1%				
Private, not for profit, wage and salary employee			44,106		7.4%				
Private, for profit, wage and salary self-employed in own business			12,515		2.1%				
Government workers			131,062		22.0%				
Self-employed in own not incorporated business			43,286		7.3%				
Unpaid family workers in family business			805		0.1%				

Source: American Community Survey 2005-09, unless otherwise stated

ProfileTemplate 9-8-11.xlsr 9/14/2011 10:46

Note: In the American Community Survey and for US Census variables other than population, Hispanic origin is not broken out for all races. White, NH represents White, Non-Hispanic. Black and Asian are Hispanic inclusive.