

Highlights



**Population Growth:** The population of the jurisdiction increased by a relatively modest 3% over the past decade to 53,000, while the state grew by 10%. The Hispanic population increased by 5,000, and the white, non-Hispanic population decreased by 3,000.

**Diversity:** The Hispanic population is now a majority, comprising 57% of the population, up from 48% in 2000. The white, non-Hispanic share of population decreased from 46% to 38% over the same period.

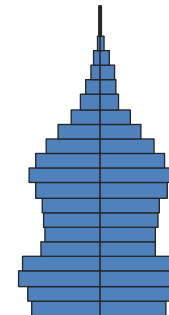
**Age Structure:** Although the age structure shifted upwards from 2000 to 2010, the jurisdiction is relatively young; 32% of the population is under 20, compared with 28% statewide. The share of people age 65+ (10%) mirrors the 11% share in the state as a whole.

**Households:** Households in the San Benito County Free Library jurisdiction are more likely to be traditional families—married couples with children—than households statewide. Thirty percent of households in the jurisdiction are traditional families, compared with 23% statewide.

**Education:** The overall level of educational attainment is lower than the statewide level, with only 17% of adults having a Bachelor’s degree, compared with 30% in California as a whole. The share of adults who have not completed high school is 28%, higher than the 20% share in California.

**Foreign Born:** A smaller share of the population is foreign born, 21%, than in the state as a whole (27%), but the share of immigrants from Mexico is much higher, at 87%, compared with 44% statewide.

*Note: The San Benito County Free Library jurisdiction includes the county population that is not located within the city of San Juan Bautista.*



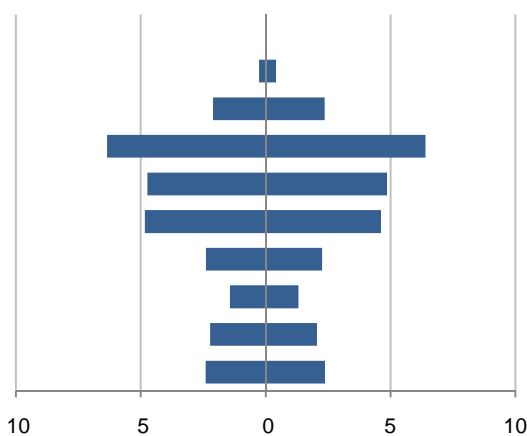
Population by Age

*This demographic profile is part of a series of library jurisdiction profiles prepared for the California State Library by the Stanford Center on Longevity. The project, "Understanding California's Shifting Demographics," was supported in whole by the U.S. Institute of Museum and Library Services under the provisions of the Library Services and Technology Act, administered in California by the State Librarian. The opinions expressed herein do not necessarily reflect the position or policy of the U.S. Institute of Museum and Library Services or the California State Library, and no official endorsement by the U.S. Institute of Museum and Library Services or the California State Library should be inferred.*

Key Indicators			
		2000	2010
<b>Population Growth</b>			
	Total population	51,685	53,407
	10-year growth	47.1%	3.3%
<b>Diversity</b>			
	% Hispanic	48.0%	56.7%
	% Asian, non-Hispanic	2.2%	2.3%
	% White, non-Hispanic	46.1%	38.1%
	% Black, non-Hispanic	0.9%	0.6%
<b>Aging</b>			
	% 65+	8.0%	9.6%
	Median age	#N/A	#N/A
<b>Households</b>			
	% Married couple with children	38.4%	30.5%
	% Living alone	13.8%	15.1%

1. Population by Library-Defined Age Group, 2010

In thousands; males on left, females on right

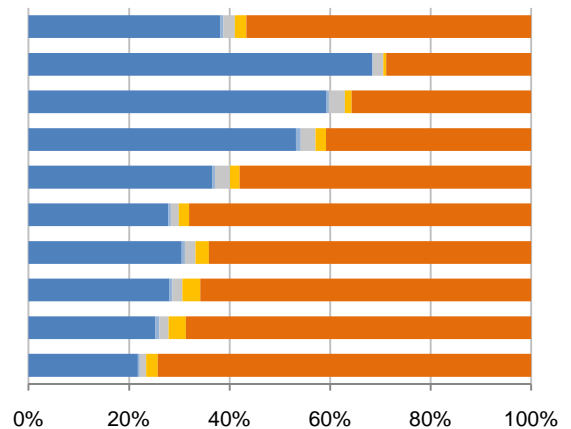


2. Race and Ethnicity by Library-Defined Age Group, 2010

White,NH Black,NH Asian,NH Other,NH Hispanic

Age group

- Total
- 85+, Oldest
- 65 to 84, Older adults
- 46 to 64, Midlife
- 33 to 45, Adult
- 19 to 32, Young
- 14 to 18, Teens
- 11 to 13, Tweens
- 6 to 10, School age
- 0 to 5, Infants/toddlers

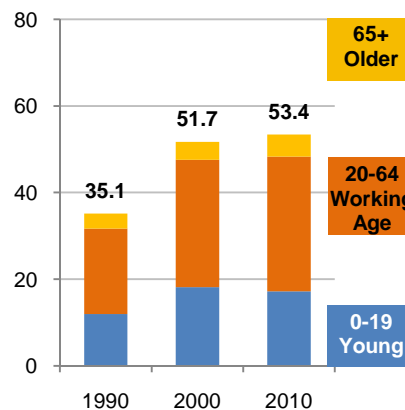


3. Population Growth by Library-Defined Age Group, 2000-10

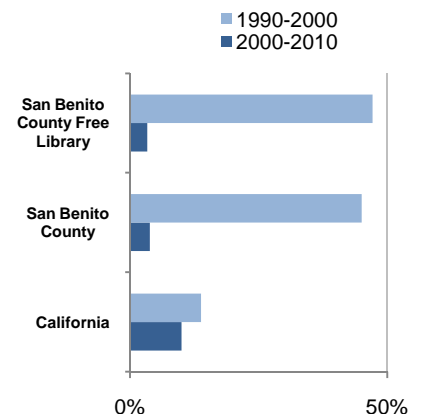
	2010	Change	% Change
<b>Total</b>	53,407	1,722	3.3%
<b>85+</b>	676	225	49.9%
<b>65 to 84</b>	4,463	768	20.8%
<b>46 to 64</b>	12,754	3,613	39.5%
<b>33 to 45</b>	9,603	-1,626	-14.5%
<b>19 to 32</b>	9,451	-264	-2.7%
<b>14 to 18</b>	4,647	413	9.8%
<b>11 to 13</b>	2,744	59	2.2%
<b>6 to 10</b>	4,284	-702	-14.1%
<b>0 to 5</b>	4,785	-764	-13.8%

4. Population Total, 1990-2010

In thousands



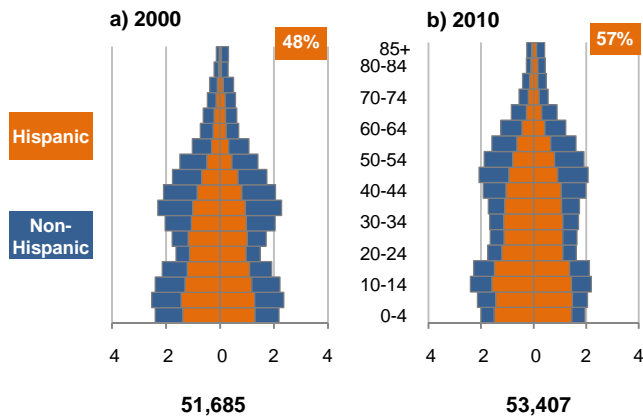
5. 10-Year Population Change



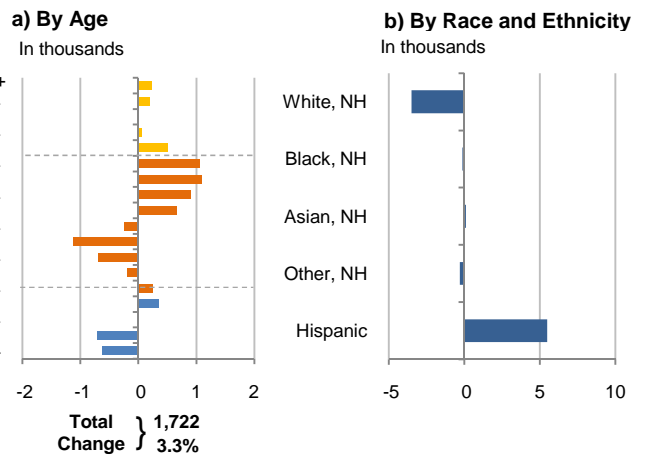
Source: US Census 2010, 2000, or 1990

6. Population by 5-Year Age Brackets

In thousands; males on left, females on right

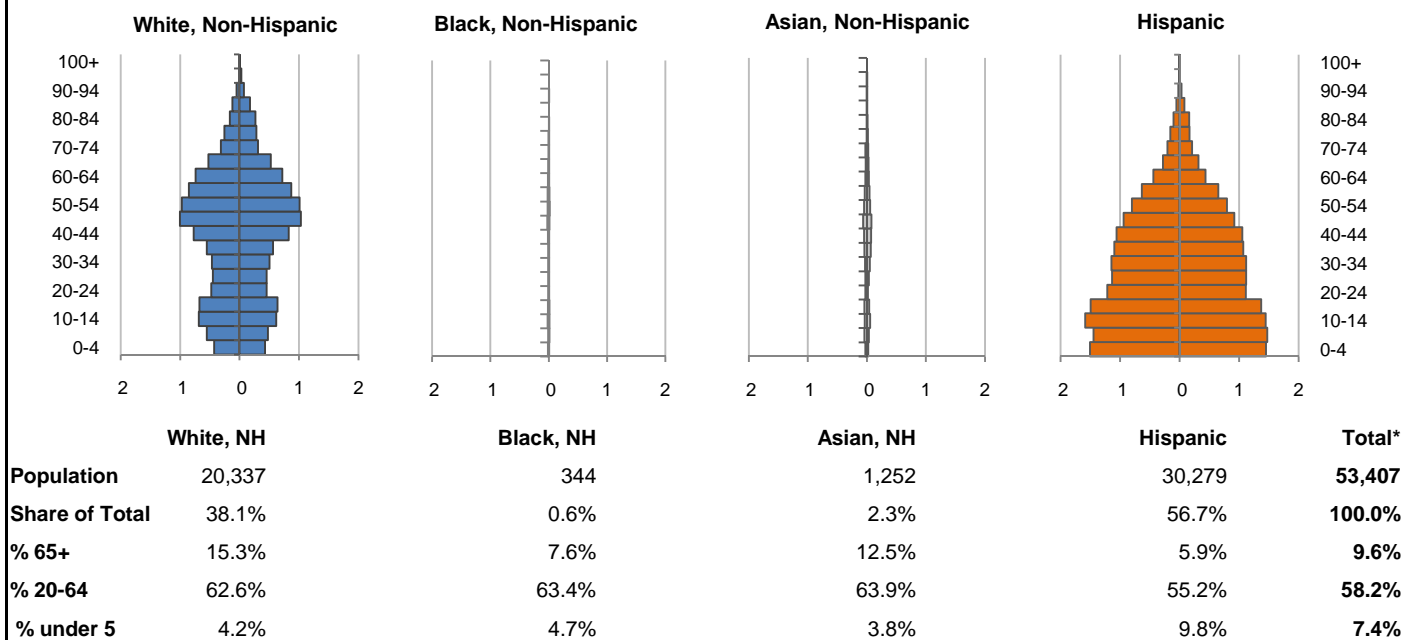


7. 10-Year Change in Population, 2000-10

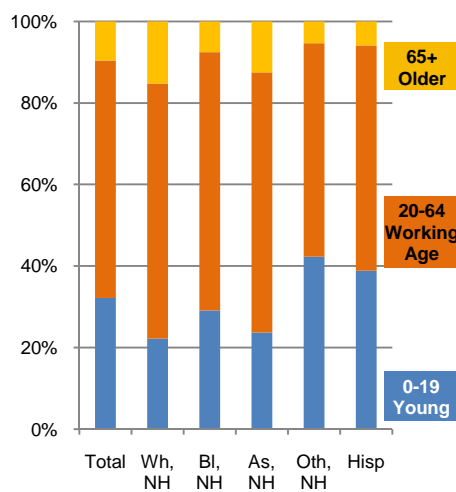


8. Population by Age, Race, and Ethnicity, 2010

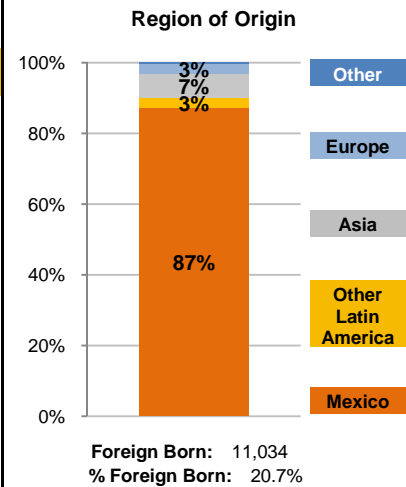
In thousands; males on left, females on right



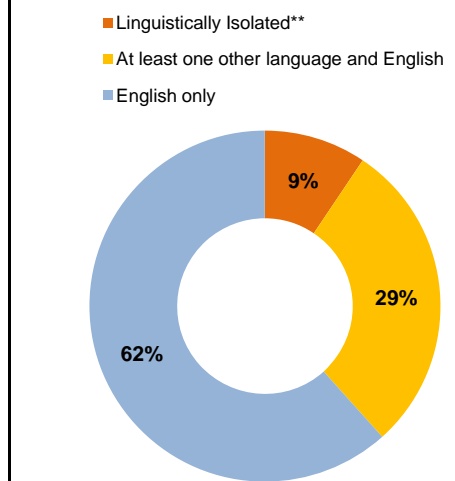
9. Age Mix by Race and Ethnicity, 2010



10. Foreign Born, 2005-09



11. Household Language, 2005-09



Wh=White; Bl=Black; As=Asian; Oth=Other Race or Two or More Races; Hisp=Hispanic; NH=Non-Hispanic; ACS=American Community Survey 2005-09

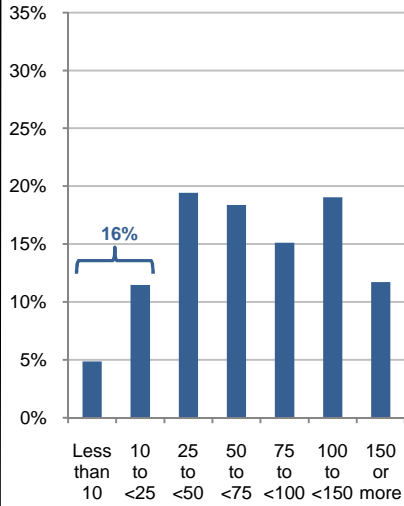
\*See pages 5-6 for detail on Other, Non-Hispanic

\*\*Linguistically Isolated = No one in the household age 14 and over speaks English at least "very well"

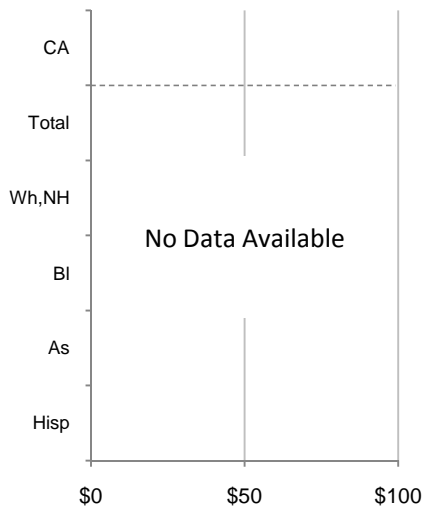
12. Household Income, 2005-09

In thousands of \$ (2009)

a) Income Distribution



b) Median Household Income by Race and Ethnicity\*



13. Labor Force and Unemployment, 2006-11

Labor Force

Unemployment Rate

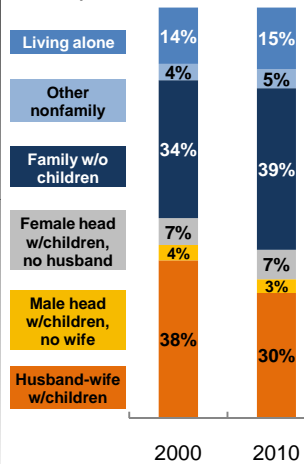


Source: CA Employment Development Department

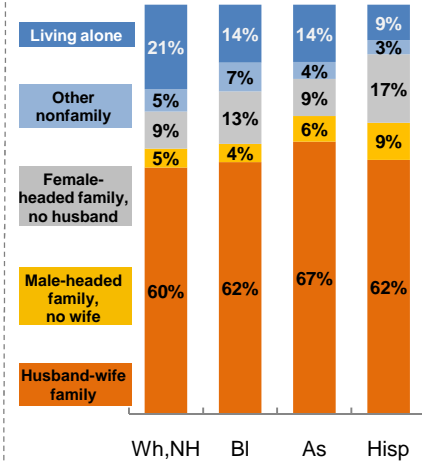
14. Household Type, 2010

% of all households

a) Total, 2000-10

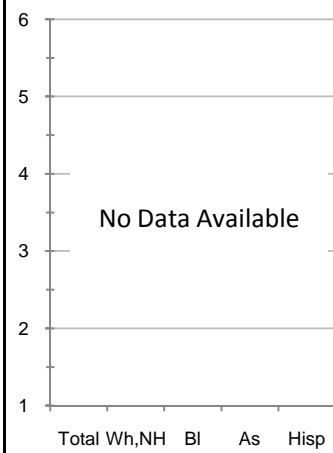


b) By Race and Ethnicity,\* 2010

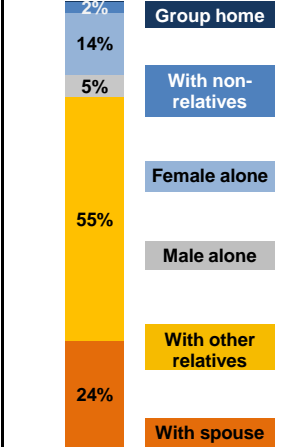


15. Average Household Size, 2010

By Race and Ethnicity\*



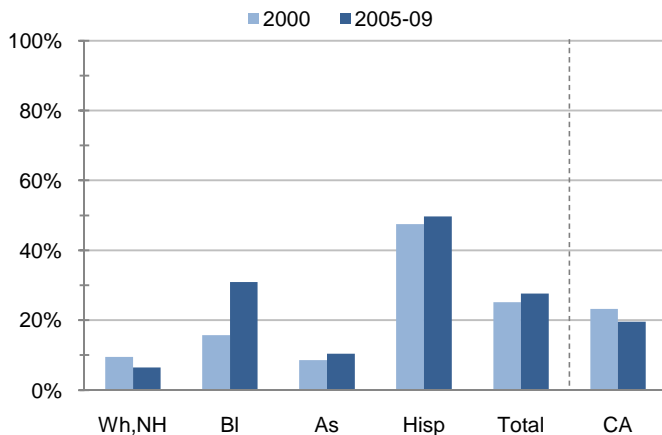
16. Living Arrangements Age 65+, 2005-09



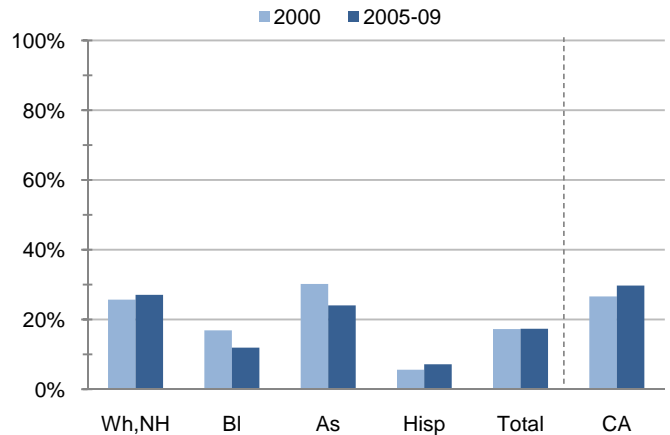
Source: ACS 2005-09

17. Educational Attainment for the Population Age 25 and Over by Race and Ethnicity\*

a) % of Adults Who Did Not Complete High School



b) % of Adults Who Attained a BA or Higher



Source: Census 2000, ACS 2005-09

\*Wh,NH=White,Non-Hispanic; BI=Black,Hispanic Inclusive; As=Asian,Hispanic Inclusive; Hisp=Hispanic(Includes all races); CA=California Total

Note: In the American Community Survey and for Census variables other than population, Hispanic origin is not broken out for all races.

	White, Non- Hispanic	Black, Non- Hispanic	Asian, Non- Hispanic	Other, Non- Hispanic	Detail for Other, Non-Hispanic				Hispanic or Latino	Total Population
					American Indian & Alaska Native	Native Hawaiian & Pacific Islander	Some Other Race	Two or More Races		
<b>A. Total Population</b>										
<b>2000 Total</b>	23,820	455	1,137	1,490	267	64	52	1,107	24,783	51,685
<b>2000 % of Total</b>	46.1%	0.9%	2.2%	2.9%	0.5%	0.1%	0.1%	2.1%	48.0%	100.0%
<b>2010 Total</b>	20,337	344	1,252	1,195	202	63	64	866	30,279	53,407
<b>2010 % of Total</b>	38.1%	0.6%	2.3%	2.2%	0.4%	0.1%	0.1%	1.6%	56.7%	100.0%
<b>B. Population in Major Age Groups by Race and Ethnicity</b>										
<b>2000</b>										
0-19	6,887	151	308	617	67	21	20	509	10,211	18,174
20-64	14,193	287	726	771	174	40	31	526	13,388	29,365
65+	2,740	17	103	102	26	3	1	72	1,184	4,146
85+	345	2	10	10	1	0	0	9	84	451
<b>2010</b>										
0-19	4,509	100	296	505	69	13	26	397	11,766	17,176
20-64	12,724	218	800	626	118	47	36	425	16,724	31,092
65+	3,104	26	156	64	15	3	2	44	1,789	5,139
85+	462	1	14	4	1	0	1	2	195	676
<b>C. Age Mix for Each Racial and Ethnic Group</b>										
<b>2000</b>										
0-19	28.9%	33.2%	27.1%	41.4%	25.1%	32.8%	38.5%	46.0%	41.2%	35.2%
20-64	59.6%	63.1%	63.9%	51.7%	65.2%	62.5%	59.6%	47.5%	54.0%	56.8%
65+	11.5%	3.7%	9.1%	6.8%	9.7%	4.7%	1.9%	6.5%	4.8%	8.0%
85+	1.4%	0.4%	0.9%	0.7%	0.4%	0.0%	0.0%	0.8%	0.3%	0.9%
<b>2010</b>										
0-19	22.2%	29.1%	23.6%	42.3%	34.2%	20.6%	40.6%	45.8%	38.9%	32.2%
20-64	62.6%	63.4%	63.9%	52.4%	58.4%	74.6%	56.3%	49.1%	55.2%	58.2%
65+	15.3%	7.6%	12.5%	5.4%	7.4%	4.8%	3.1%	5.1%	5.9%	9.6%
85+	2.3%	0.3%	1.1%	0.3%	0.5%	0.0%	1.6%	0.2%	0.6%	1.3%
<b>D. Racial and Ethnic Mix for Each Age Group</b>										
<b>2000</b>										
0-19	37.9%	0.8%	1.7%	3.4%	0.4%	0.1%	0.1%	2.8%	56.2%	100.0%
20-64	48.3%	1.0%	2.5%	2.6%	0.6%	0.1%	0.1%	1.8%	45.6%	100.0%
65+	66.1%	0.4%	2.5%	2.5%	0.6%	0.1%	0.0%	1.7%	28.6%	100.0%
85+	76.5%	0.4%	2.2%	2.2%	0.2%	0.0%	0.0%	2.0%	18.6%	100.0%
<b>2010</b>										
0-19	26.3%	0.6%	1.7%	2.9%	0.4%	0.1%	0.2%	2.3%	68.5%	100.0%
20-64	40.9%	0.7%	2.6%	2.0%	0.4%	0.2%	0.1%	1.4%	53.8%	100.0%
65+	60.4%	0.5%	3.0%	1.2%	0.3%	0.1%	0.0%	0.9%	34.8%	100.0%
85+	68.3%	0.1%	2.1%	0.6%	0.1%	0.0%	0.1%	0.3%	28.8%	100.0%
<b>E. Population Growth</b>										
<b>2000-10, Change</b>										
0-19	-2,378	-51	-12	-112	2	-8	6	-112	1,555	-998
20-64	-1,469	-69	74	-145	-56	7	5	-101	3,336	1,727
65+	364	9	53	-38	-11	0	1	-28	605	993
85+	117	-1	4	-6	0	0	1	-7	111	225
<b>Total</b>	<b>-3,483</b>	<b>-111</b>	<b>115</b>	<b>-295</b>	<b>-65</b>	<b>-1</b>	<b>12</b>	<b>-241</b>	<b>5,496</b>	<b>1,722</b>
<b>2000-10, % Change</b>										
0-19	-34.5%	-33.8%	-3.9%	-18.2%	3.0%	-38.1%	30.0%	-22.0%	15.2%	-5.5%
20-64	-10.4%	-24.0%	10.2%	-18.8%	-32.2%	17.5%	16.1%	-19.2%	24.9%	5.9%
65+	13.3%	52.9%	51.5%	-37.3%	-42.3%	0.0%	100.0%	-38.9%	51.1%	24.0%
85+	33.9%	-50.0%	40.0%	-60.0%	0.0%	N/A	N/A	-77.8%	132.1%	49.9%
<b>Total</b>	<b>-14.6%</b>	<b>-24.4%</b>	<b>10.1%</b>	<b>-19.8%</b>	<b>-24.3%</b>	<b>-1.6%</b>	<b>23.1%</b>	<b>-21.8%</b>	<b>22.2%</b>	<b>3.3%</b>

Source: US Census 2010, 2000

	White, Non- Hispanic	Black, Non- Hispanic	Asian, Non- Hispanic	Other, Non- Hispanic	Detail for Other, Non-Hispanic				Hispanic or Latino	Total Population 2010
					American Indian & Alaska Native	Native Hawaiian & Pacific Islander	Some Other Race	Two or More Races		
<b>F. Population by Library-Defined Age Groups, 2010</b>										
0-5	1,041	19	61	109	16	0	7	86	3,555	4,785
6-10	1,083	32	79	147	27	2	6	112	2,943	4,284
11-13	770	16	53	98	8	3	7	80	1,807	2,744
14-18	1,415	31	96	126	15	6	5	100	2,979	4,647
19-32	2,630	45	150	193	31	14	10	138	6,433	9,451
33-45	3,506	57	285	185	29	18	7	131	5,570	9,603
46-64	6,788	118	372	273	61	17	20	175	5,203	12,754
65-84	2,642	25	142	60	14	3	1	42	1,594	4,463
85+	462	1	14	4	1	0	1	2	195	676
Total	20,337	344	1,252	1,195	202	63	64	866	30,279	53,407
<b>G. Population by 5-Year Age Brackets, 2010</b>										
0-4	858	16	48	89	15	0	7	67	2,957	3,968
5-9	1,030	26	76	141	22	2	4	113	2,919	4,192
10-14	1,304	32	90	152	18	3	9	122	3,029	4,607
15-19	1,317	26	82	123	14	8	6	95	2,861	4,409
20-24	928	17	45	67	15	6	3	43	2,326	3,383
25-29	909	20	58	59	9	2	4	44	2,248	3,294
30-34	974	17	77	63	5	6	4	48	2,261	3,392
35-39	1,116	12	110	73	10	5	3	55	2,164	3,475
40-44	1,597	25	115	67	13	8	2	44	2,111	3,915
45-49	2,036	39	141	81	20	8	1	52	1,857	4,154
50-54	1,980	36	105	85	19	6	4	56	1,597	3,803
55-59	1,721	34	85	78	11	4	10	53	1,283	3,201
60-64	1,463	18	64	53	16	2	5	30	877	2,475
65-69	1,050	14	49	30	5	3	0	22	595	1,738
70-74	624	8	49	14	4	0	1	9	414	1,109
75-79	540	2	25	10	3	0	0	7	323	900
80-84	428	1	19	6	2	0	0	4	262	716
85-89	299	0	7	3	0	0	1	2	133	442
90-94	121	1	5	1	1	0	0	0	53	181
95-99	36	0	2	0	0	0	0	0	7	45
100+	6	0	0	0	0	0	0	0	2	8
Total	20,337	344	1,252	1,195	202	63	64	866	30,279	53,407
<b>H. Median Age, 2000-10</b>										
	White, Non- Hispanic	Black, Hispanic Inclusive	Asian, Hispanic Inclusive		American Indian & Alaska Native, Hispanic Inclusive	Native Hawaiian & Pacific Islander, Hispanic Inclusive	Some Other Race, Hispanic Inclusive	Two or More Races, Hispanic Inclusive	Hispanic or Latino	Total Population
2000	#N/A	#N/A	#N/A		#N/A	#N/A	#N/A	#N/A	#N/A	#N/A
2010	#N/A	#N/A	#N/A		#N/A	#N/A	#N/A	#N/A	#N/A	#N/A

Source: US Census 2010, 2000

Note: In the American Community Survey and for Census variables other than population, Hispanic origin is not broken out for all races.

I. Income Distribution, 2005-09			J. Median Household Income by Race and Ethnicity, 2005-09 (\$2009)						
Range (ths)	Households	% of Total	White, NH	Black	Asian	Hispanic	Total	% of CA	California
<\$10	783	4.9%	#N/A	#N/A	#N/A	#N/A	#N/A	#N/A	\$60,392
\$10 to <\$25	1,844	11.5%							
\$25 to <\$50	3,125	19.4%							
\$50 to <\$75	2,958	18.4%							
\$75 to <\$100	2,430	15.1%							
\$100 to <\$150	3,064	19.0%							
\$150+	1,886	11.7%							
K. Household Type, 2000-10			2000	2000,%	2010	2010,%			
<b>Total households</b>			15,394	100.0%	16,124	100.0%			
Family Households			12,663	82.3%	12,957	80.4%			
Husband-wife w/children			5,912	38.4%	4,911	30.5%			
Female head, no husband, w/children			1,011	6.6%	1,161	7.2%			
Male head, no wife, w/children			570	3.7%	540	3.3%			
Without children			5,170	33.6%	6,345	39.4%			
Nonfamily households			2,731	17.7%	3,167	19.6%			
Living alone			2,119	13.8%	2,432	15.1%			
Other nonfamily			612	4.0%	735	4.6%	Source: US Census 2010, 2000		
L. Household Type by Race and Ethnicity, 2010			White, NH	Black	Asian	Hispanic	Total		
<b>Total households</b>			8,170	156	386	7,143	16,124		
Husband-wife family			60.2%	61.5%	66.6%	62.1%	61.2%		
Family with male head, no wife			4.6%	4.5%	6.2%	9.1%	6.6%		
Family with female head, no husband			9.1%	12.8%	9.1%	16.7%	12.6%		
Living alone			20.6%	14.1%	14.0%	8.7%	15.1%	Source: US	
Other nonfamily			5.4%	7.1%	4.1%	3.5%	4.6%	Census 2010	
M. Poverty, 2005-09							California		
<i>Percentage of families and people whose income in the past 12 months is below the poverty level</i>									
All families							8.4%	9.8%	
Families w/ related children under 18 years							12.3%	14.5%	
Families w/ female householder, no husband present							28.2%	24.2%	
Families w/ female householder, no husband present w/ related children under 18 years							38.6%	32.2%	
All people							11.1%	13.2%	
Under 18 years							12.7%	18.3%	
18 to 64 years							11.0%	11.9%	
65 years and over							6.6%	8.4%	
N. Educational Attainment, 2005-09			% at each level of educational attainment						
			White, NH	Black	Asian	Hispanic	Total		
<b>Population 25 years and over</b>			15,067	437	944	15,294	32,559		
Less than high school			6.5%	30.9%	10.4%	49.7%	27.6%		
High school graduate (includes equivalency)			25.8%	46.0%	17.7%	21.5%	23.7%		
Some college or associate's degree			40.7%	11.2%	47.9%	21.7%	31.3%		
Bachelor's degree or higher			27.1%	11.9%	24.0%	7.2%	17.4%		
O. Employment Status, 2010-11			2010	June 2011					
In civilian labor force			#N/A	#N/A					
Employed			#N/A	#N/A					
Unemployed, % of labor force			#N/A	#N/A	Source: CA Employment Development Department				
P. Occupation, 2005-09			Estimate		Percent				
<b>Civilian employed population, 16 yrs &amp; over</b>			24,885		100.0%				
Management, professional, and related occupations			6,586		26.5%				
Service occupations			3,676		14.8%				
Sales and office occupations			5,865		23.6%				
Farming, fishing, and forestry occupations			2,688		10.8%				
Construction, extraction, maintenance, and repair occupations			2,513		10.1%				
Production, transportation, and material moving occupations			3,557		14.3%				
Q. Class of Worker, 2005-09			Estimate		Percent				
<b>Civilian employed population, 16 yrs &amp; over</b>			24,885		100.0%				
Private, for profit, wage and salary employee			17,678		71.0%				
Private, not for profit, wage and salary employee			832		3.3%				
Private, for profit, wage and salary self-employed in own business			969		3.9%				
Government workers			3,521		14.1%				
Self-employed in own not incorporated business			1,717		6.9%				
Unpaid family workers in family business			168		0.7%				

Source: American Community Survey 2005-09, unless otherwise stated

ProfileTemplate 9-8-11.xlsr 9/9/2011 16:57

Note: In the American Community Survey and for US Census variables other than population, Hispanic origin is not broken out for all races. White, NH represents White, Non-Hispanic. Black and Asian are Hispanic inclusive.