

Highlights



**Population Growth:** The population of Santa Fe Springs declined by 7% over the past ten years to 16,000, in contrast with statewide growth of 10%. The steepest declines occurred among young people (-12%), and white, non-Hispanics (-43%), while the Hispanic population experienced modest growth of 6%.

**Diversity:** Hispanics are the largest racial and ethnic group in Santa Fe Springs, at 81% of the total population. White, non-Hispanics now account for 12% of total, down from 19% in 2000.

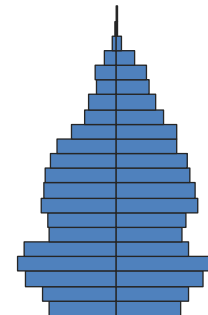
**Age Structure:** The age structure shifted upward slightly over the last decade, with median age increasing from 33 to 35, mirroring the statewide pattern. The share of population age 65+ remained stable at 13%, though this is higher than the 11% share statewide.

**Households:** The share of traditional families—married couples with children—decreased significantly, from 31% of households in 2000 to 23% in 2010, the same as the statewide share. Families without children now make up 43% of all households, compared with 36% in California overall.

**Education:** Educational attainment has improved slightly over the past ten years, but remains behind California as a whole. The share of adults who have less than a high school education is 26%, compared with 20% statewide. Only 10% have a Bachelor’s degree or higher, compared with 30% of adults in California.

**Income:** Median household income is \$55,000, 91% of the state median income of \$60,000.

**Foreign Born:** Foreign-born individuals account for 21% of the population, compared with 27% statewide. The share of immigrants from Latin America is particularly high, at 91%, compared with 55% statewide.



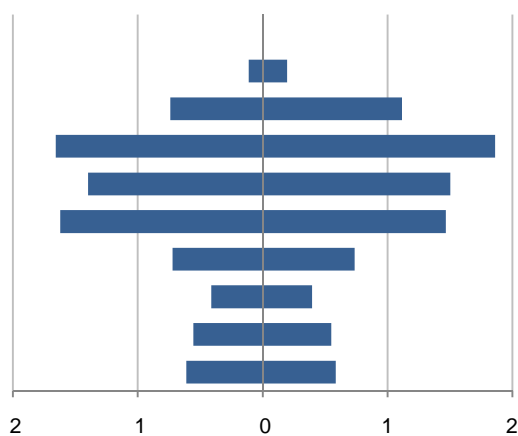
Population by Age

*This demographic profile is part of a series of library jurisdiction profiles prepared for the California State Library by the Stanford Center on Longevity. The project, "Understanding California's Shifting Demographics," was supported in whole by the U.S. Institute of Museum and Library Services under the provisions of the Library Services and Technology Act, administered in California by the State Librarian. The opinions expressed herein do not necessarily reflect the position or policy of the U.S. Institute of Museum and Library Services or the California State Library, and no official endorsement by the U.S. Institute of Museum and Library Services or the California State Library should be inferred.*

Key Indicators			
		2000	2010
<b>Population Growth</b>			
	Total population	17,438	16,223
	10-year growth	12.4%	-7.0%
<b>Diversity</b>			
	% Hispanic	71.4%	81.0%
	% Asian, non-Hispanic	3.7%	3.8%
	% White, non-Hispanic	19.2%	11.9%
	% Black, non-Hispanic	3.7%	1.9%
<b>Aging</b>			
	% 65+	12.8%	13.3%
	Median age	33.1	35.3
<b>Households</b>			
	% Married couple with children	31.3%	23.1%
	% Living alone	18.2%	18.8%

1. Population by Library-Defined Age Group, 2010

In thousands; males on left, females on right

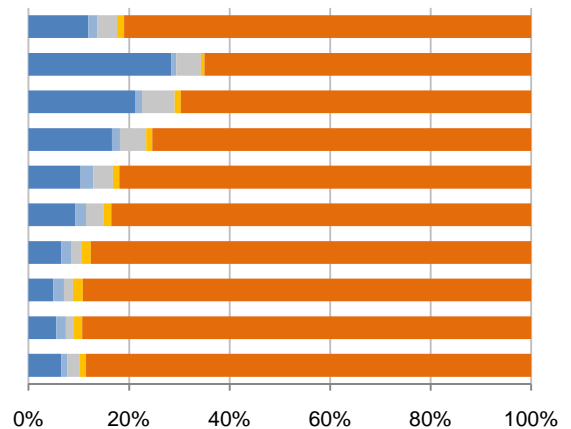


2. Race and Ethnicity by Library-Defined Age Group, 2010

White,NH Black,NH Asian,NH Other,NH Hispanic

Age group

- Total
- 85+, Oldest
- 65 to 84, Older adults
- 46 to 64, Midlife
- 33 to 45, Adult
- 19 to 32, Young
- 14 to 18, Teens
- 11 to 13, Tweens
- 6 to 10, School age
- 0 to 5, Infants/toddlers

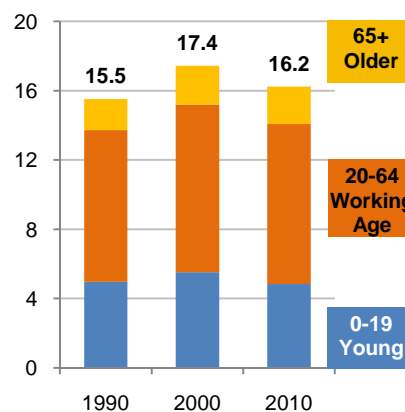


3. Population Growth by Library-Defined Age Group, 2000-10

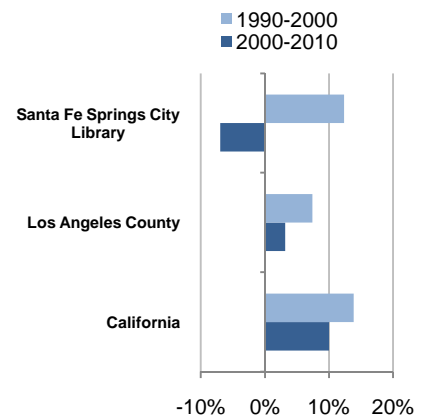
	2010	Change	% Change
<b>Total</b>	16,223	-1,215	-7.0%
<b>85+</b>	306	180	142.9%
<b>65 to 84</b>	1,854	-254	-12.0%
<b>46 to 64</b>	3,517	413	13.3%
<b>33 to 45</b>	2,899	-514	-15.1%
<b>19 to 32</b>	3,085	-295	-8.7%
<b>14 to 18</b>	1,456	83	6.0%
<b>11 to 13</b>	806	-107	-11.7%
<b>6 to 10</b>	1,104	-369	-25.1%
<b>0 to 5</b>	1,196	-352	-22.7%

4. Population Total, 1990-2010

In thousands



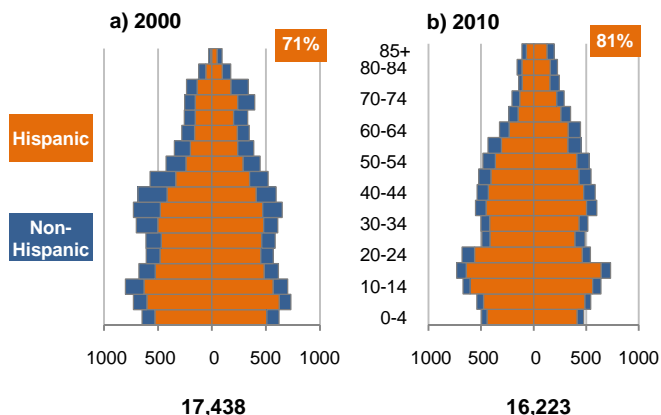
5. 10-Year Population Change



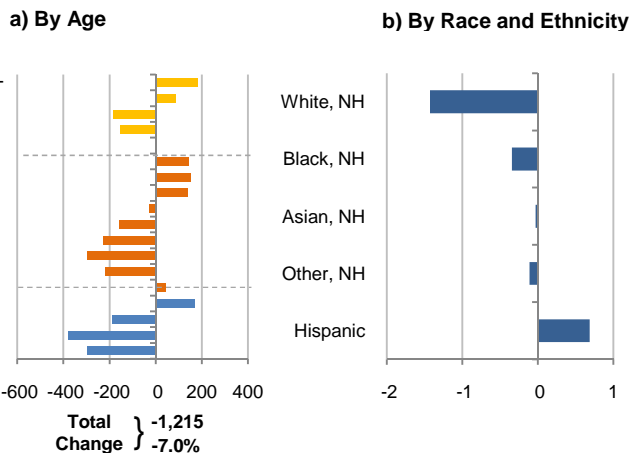
Source: US Census 2010, 2000, or 1990

6. Population by 5-Year Age Brackets

Males on left, females on right

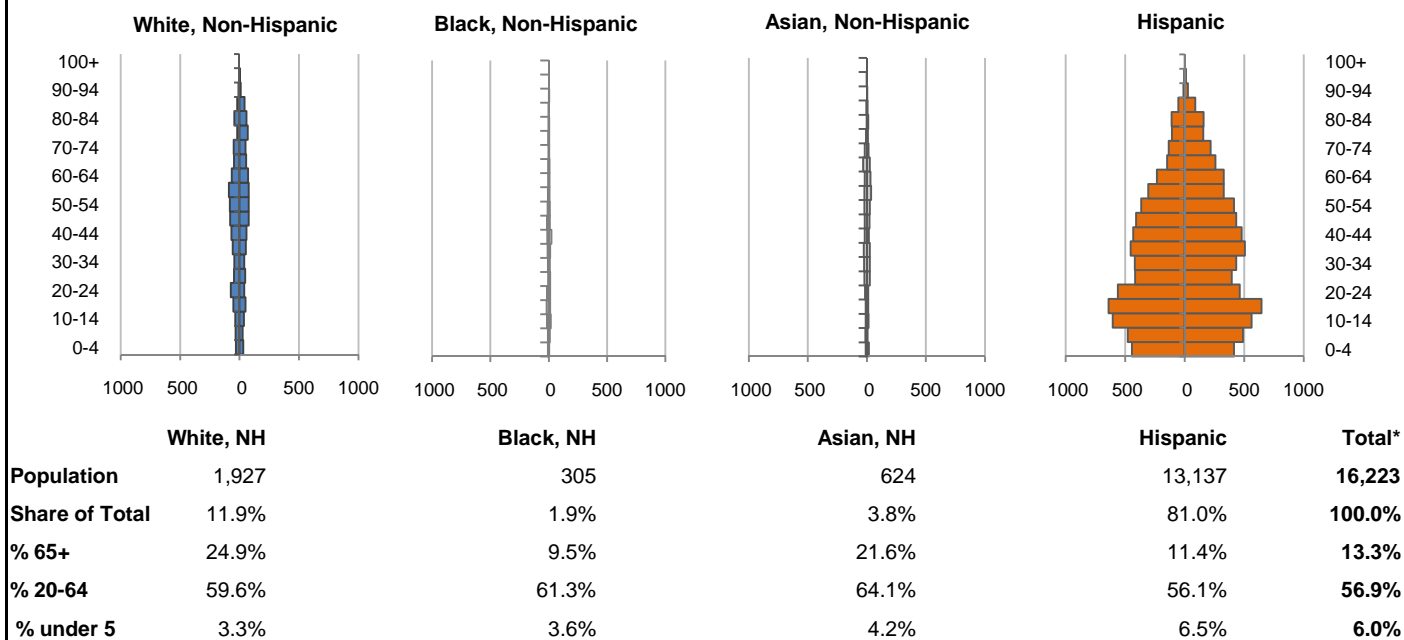


7. 10-Year Change in Population, 2000-10

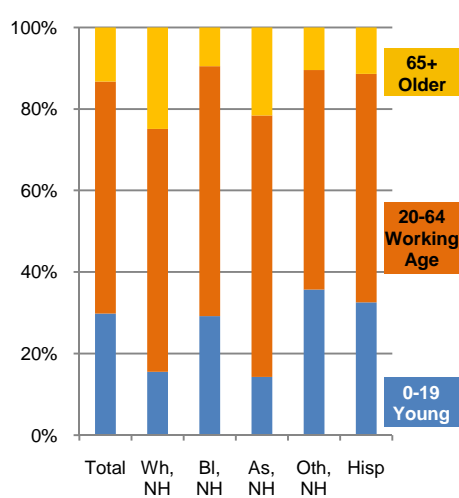


8. Population by Age, Race, and Ethnicity, 2010

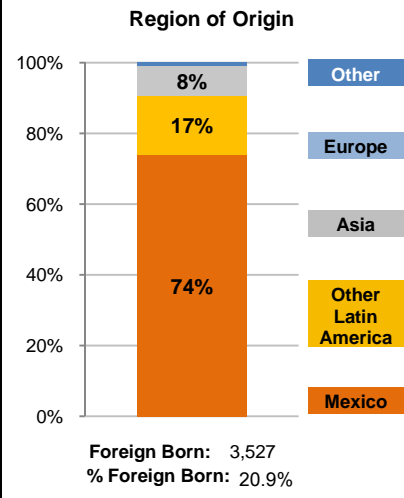
Males on left, females on right



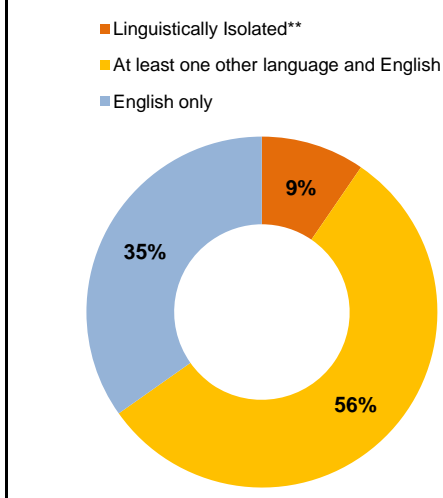
9. Age Mix by Race and Ethnicity, 2010



10. Foreign Born, 2005-09



11. Household Language, 2005-09

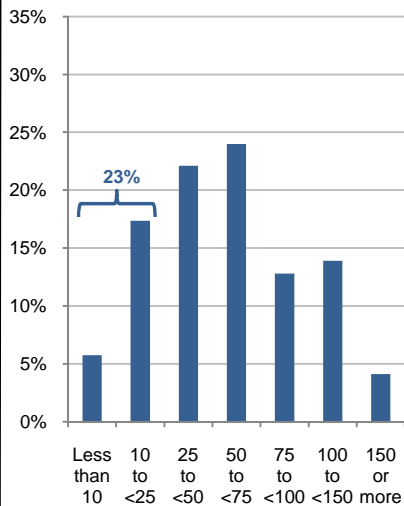


Wh=White; Bl=Black; As=Asian; Oth=Other Race or Two or More Races; Hisp=Hispanic; NH=Non-Hispanic; ACS=American Community Survey 2005-09  
\*See pages 5-6 for detail on Other, Non-Hispanic  
\*\*Linguistically Isolated = No one in the household age 14 and over speaks English at least "very well"

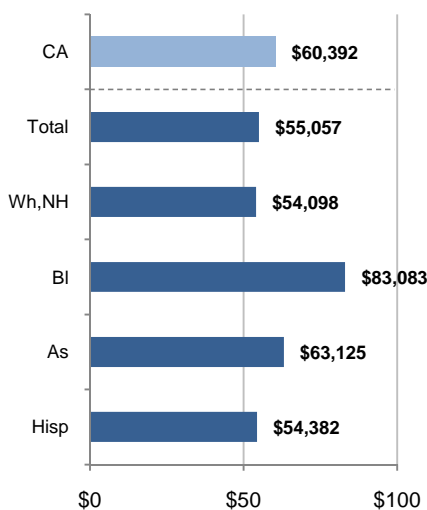
12. Household Income, 2005-09

In thousands of \$ (2009)

a) Income Distribution



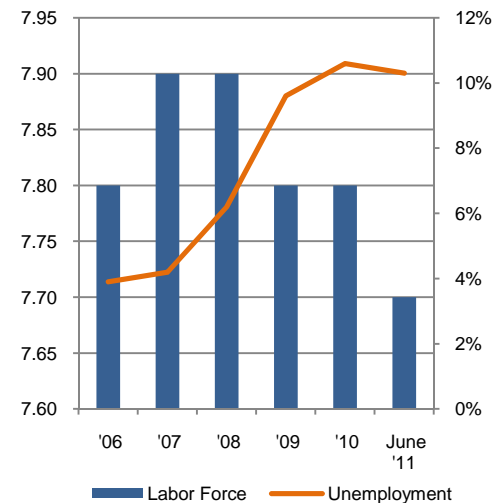
b) Median Household Income by Race and Ethnicity\*



13. Labor Force and Unemployment, 2006-11

Labor Force In thousands

Unemployment Rate

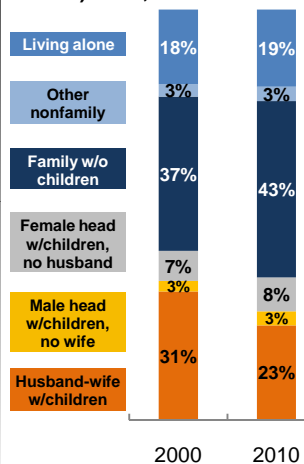


Source: CA Employment Development Department

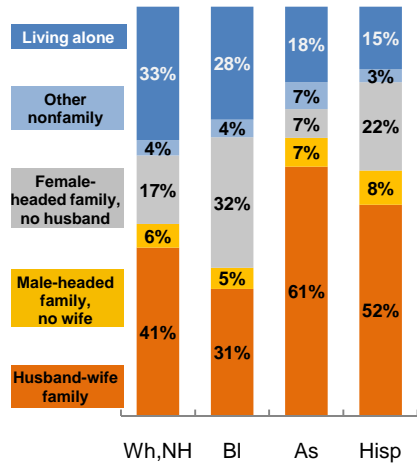
14. Household Type, 2010

% of all households

a) Total, 2000-10

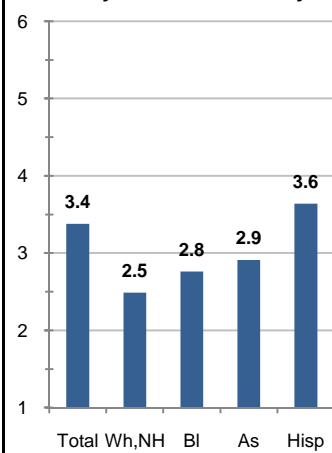


b) By Race and Ethnicity,\* 2010

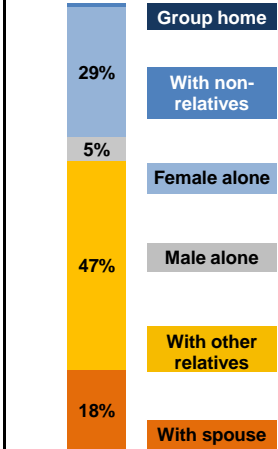


15. Average Household Size, 2010

By Race and Ethnicity\*



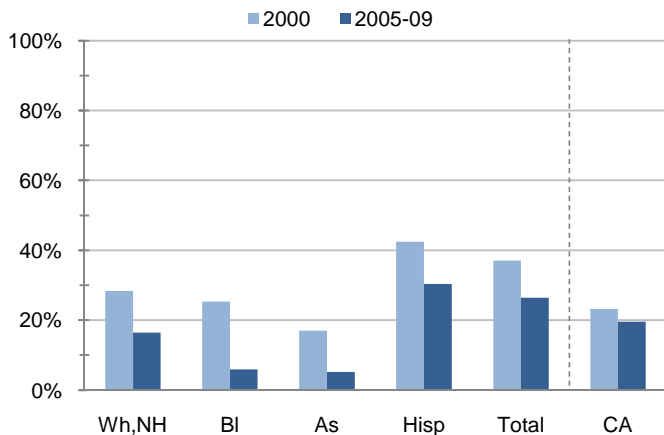
16. Living Arrangements Age 65+, 2005-09



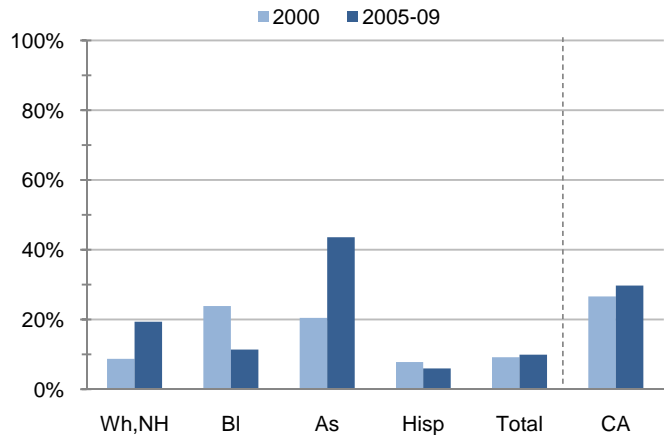
Source: ACS 2005-09

17. Educational Attainment for the Population Age 25 and Over by Race and Ethnicity\*

a) % of Adults Who Did Not Complete High School



b) % of Adults Who Attained a BA or Higher



Source: Census 2000, ACS 2005-09

\*Wh,NH=White,Non-Hispanic; BI=Black,Hispanic Inclusive; As=Asian,Hispanic Inclusive; Hisp=Hispanic(Includes all races); CA=California Total

Note: In the American Community Survey and for Census variables other than population, Hispanic origin is not broken out for all races.

	White, Non- Hispanic	Black, Non- Hispanic	Asian, Non- Hispanic	Other, Non- Hispanic	Detail for Other, Non-Hispanic				Hispanic or Latino	Total Population
					American Indian & Alaska Native	Native Hawaiian & Pacific Islander	Some Other Race	Two or More Races		
<b>A. Total Population</b>										
<b>2000 Total</b>	3,354	645	652	340	79	29	15	217	12,447	17,438
<b>2000 % of Total</b>	19.2%	3.7%	3.7%	1.9%	0.5%	0.2%	0.1%	1.2%	71.4%	100.0%
<b>2010 Total</b>	1,927	305	624	230	65	20	26	119	13,137	16,223
<b>2010 % of Total</b>	11.9%	1.9%	3.8%	1.4%	0.4%	0.1%	0.2%	0.7%	81.0%	100.0%
<b>B. Population in Major Age Groups by Race and Ethnicity</b>										
<b>2000</b>										
0-19	600	182	140	124	24	10	2	88	4,479	5,525
20-64	1,951	424	440	180	45	17	12	106	6,684	9,679
65+	803	39	72	36	10	2	1	23	1,284	2,234
85+	55	2	3	3	1	0	0	2	63	126
<b>2010</b>										
0-19	299	89	89	82	17	3	14	48	4,276	4,835
20-64	1,148	187	400	124	36	14	11	63	7,369	9,228
65+	480	29	135	24	12	3	1	8	1,492	2,160
85+	87	3	15	2	1	0	0	1	199	306
<b>C. Age Mix for Each Racial and Ethnic Group</b>										
<b>2000</b>										
0-19	17.9%	28.2%	21.5%	36.5%	30.4%	34.5%	13.3%	40.6%	36.0%	31.7%
20-64	58.2%	65.7%	67.5%	52.9%	57.0%	58.6%	80.0%	48.8%	53.7%	55.5%
65+	23.9%	6.0%	11.0%	10.6%	12.7%	6.9%	6.7%	10.6%	10.3%	12.8%
85+	1.6%	0.3%	0.5%	0.9%	1.3%	0.0%	0.0%	0.9%	0.5%	0.7%
<b>2010</b>										
0-19	15.5%	29.2%	14.3%	35.7%	26.2%	15.0%	53.8%	40.3%	32.5%	29.8%
20-64	59.6%	61.3%	64.1%	53.9%	55.4%	70.0%	42.3%	52.9%	56.1%	56.9%
65+	24.9%	9.5%	21.6%	10.4%	18.5%	15.0%	3.8%	6.7%	11.4%	13.3%
85+	4.5%	1.0%	2.4%	0.9%	1.5%	0.0%	0.0%	0.8%	1.5%	1.9%
<b>D. Racial and Ethnic Mix for Each Age Group</b>										
<b>2000</b>										
0-19	10.9%	3.3%	2.5%	2.2%	0.4%	0.2%	0.0%	1.6%	81.1%	100.0%
20-64	20.2%	4.4%	4.5%	1.9%	0.5%	0.2%	0.1%	1.1%	69.1%	100.0%
65+	35.9%	1.7%	3.2%	1.6%	0.4%	0.1%	0.0%	1.0%	57.5%	100.0%
85+	43.7%	1.6%	2.4%	2.4%	0.8%	0.0%	0.0%	1.6%	50.0%	100.0%
<b>2010</b>										
0-19	6.2%	1.8%	1.8%	1.7%	0.4%	0.1%	0.3%	1.0%	88.4%	100.0%
20-64	12.4%	2.0%	4.3%	1.3%	0.4%	0.2%	0.1%	0.7%	79.9%	100.0%
65+	22.2%	1.3%	6.3%	1.1%	0.6%	0.1%	0.0%	0.4%	69.1%	100.0%
85+	28.4%	1.0%	4.9%	0.7%	0.3%	0.0%	0.0%	0.3%	65.0%	100.0%
<b>E. Population Growth</b>										
<b>2000-10, Change</b>										
0-19	-301	-93	-51	-42	-7	-7	12	-40	-203	-690
20-64	-803	-237	-40	-56	-9	-3	-1	-43	685	-451
65+	-323	-10	63	-12	2	1	0	-15	208	-74
85+	32	1	12	-1	0	0	0	-1	136	180
<b>Total</b>	<b>-1,427</b>	<b>-340</b>	<b>-28</b>	<b>-110</b>	<b>-14</b>	<b>-9</b>	<b>11</b>	<b>-98</b>	<b>690</b>	<b>-1,215</b>
<b>2000-10, % Change</b>										
0-19	-50.2%	-51.1%	-36.4%	-33.9%	-29.2%	-70.0%	600.0%	-45.5%	-4.5%	-12.5%
20-64	-41.2%	-55.9%	-9.1%	-31.1%	-20.0%	-17.6%	-8.3%	-40.6%	10.2%	-4.7%
65+	-40.2%	-25.6%	87.5%	-33.3%	20.0%	50.0%	0.0%	-65.2%	16.2%	-3.3%
85+	58.2%	50.0%	400.0%	-33.3%	0.0%	N/A	N/A	-50.0%	215.9%	142.9%
<b>Total</b>	<b>-42.5%</b>	<b>-52.7%</b>	<b>-4.3%</b>	<b>-32.4%</b>	<b>-17.7%</b>	<b>-31.0%</b>	<b>73.3%</b>	<b>-45.2%</b>	<b>5.5%</b>	<b>-7.0%</b>

Source: US Census 2010, 2000

	White, Non- Hispanic	Black, Non- Hispanic	Asian, Non- Hispanic	Other, Non- Hispanic	Detail for Other, Non-Hispanic				Hispanic or Latino	Total Population 2010
					American Indian & Alaska Native	Native Hawaiian & Pacific Islander	Some Other Race	Two or More Races		
<b>F. Population by Library-Defined Age Groups, 2010</b>										
0-5	78	14	29	16	2	0	3	11	1,059	1,196
6-10	61	21	16	20	2	0	4	14	986	1,104
11-13	40	17	14	16	3	1	3	9	719	806
14-18	95	30	28	27	8	2	4	13	1,276	1,456
19-32	289	64	106	48	8	8	3	29	2,578	3,085
33-45	300	74	112	37	15	2	4	16	2,376	2,899
46-64	584	56	184	42	15	4	4	19	2,651	3,517
65-84	393	26	120	22	11	3	1	7	1,293	1,854
85+	87	3	15	2	1	0	0	1	199	306
Total	1,927	305	624	230	65	20	26	119	13,137	16,223
<b>G. Population by 5-Year Age Brackets, 2010</b>										
0-4	63	11	26	14	1	0	2	11	859	973
5-9	61	17	17	21	3	0	4	14	967	1,083
10-14	73	31	23	22	5	1	4	12	1,166	1,315
15-19	102	30	23	25	8	2	4	11	1,284	1,464
20-24	113	29	28	27	2	5	2	18	1,024	1,221
25-29	96	17	45	11	4	2	0	5	811	980
30-34	84	16	49	13	2	2	1	8	853	1,015
35-39	109	24	50	12	5	1	2	4	958	1,153
40-44	126	37	34	18	8	0	2	8	909	1,124
45-49	155	24	40	8	2	1	2	3	841	1,068
50-54	158	18	48	10	5	1	1	3	777	1,011
55-59	168	13	57	14	3	2	1	8	634	886
60-64	139	9	49	11	5	0	0	6	562	770
65-69	102	11	56	9	6	0	0	3	407	585
70-74	101	5	33	4	1	1	1	1	353	496
75-79	90	8	18	7	3	2	0	2	264	387
80-84	100	2	13	2	1	0	0	1	269	386
85-89	63	2	12	1	1	0	0	0	144	222
90-94	21	1	2	1	0	0	0	1	40	65
95-99	3	0	1	0	0	0	0	0	13	17
100+	0	0	0	0	0	0	0	0	2	2
Total	1,927	305	624	230	65	20	26	119	13,137	16,223
<b>H. Median Age, 2000-10</b>										
	White, Non- Hispanic	Black, Hispanic Inclusive	Asian, Hispanic Inclusive		American Indian & Alaska Native, Hispanic Inclusive	Native Hawaiian & Pacific Islander, Hispanic Inclusive	Some Other Race, Hispanic Inclusive	Two or More Races, Hispanic Inclusive	Hispanic or Latino	Total Population
2000	45.2	36.7	36.8		30.0	28.5	27.2	25.8	29.4	33.1
2010	49.3	32.6	45.8		38.4	28.5	30.1	26.5	32.7	35.3

Source: US Census 2010, 2000

Note: In the American Community Survey and for Census variables other than population, Hispanic origin is not broken out for all races.

I. Income Distribution, 2005-09			J. Median Household Income by Race and Ethnicity, 2005-09 (\$2009)						
Range (ths)	Households	% of Total	White, NH	Black	Asian	Hispanic	Total	% of CA	California
<\$10	285	5.7%	\$54,098	\$83,083	\$63,125	\$54,382	\$55,057	91.2%	\$60,392
\$10 to <\$25	862	17.3%							
\$25 to <\$50	1,099	22.1%							
\$50 to <\$75	1,192	24.0%							
\$75 to <\$100	636	12.8%							
\$100 to <\$150	690	13.9%							
\$150+	205	4.1%							
K. Household Type, 2000-10			2000	2000,%	2010	2010,%			
<b>Total households</b>			4,857	100.0%	4,747	100.0%			
Family Households			3,824	78.7%	3,687	77.7%			
Husband-wife w/children			1,520	31.3%	1,096	23.1%			
Female head, no husband, w/children			357	7.4%	392	8.3%			
Male head, no wife, w/children			126	2.6%	162	3.4%			
Without children			1,821	37.5%	2,037	42.9%			
Nonfamily households			1,033	21.3%	1,060	22.3%			
Living alone			883	18.2%	894	18.8%			
Other nonfamily			150	3.1%	166	3.5%	Source: US Census 2010, 2000		
L. Household Type by Race and Ethnicity, 2010			White, NH	Black	Asian	Hispanic	Total		
<b>Total households</b>			829	116	228	3,537	4,747		
Husband-wife family			41.1%	31.0%	61.0%	51.6%	49.6%		
Family with male head, no wife			5.8%	5.2%	7.0%	8.3%	7.8%		
Family with female head, no husband			16.8%	31.9%	7.0%	21.6%	20.3%		
Living alone			32.6%	27.6%	18.4%	15.2%	18.8%	Source: US	
Other nonfamily			3.7%	4.3%	6.6%	3.3%	3.5%	Census 2010	
M. Poverty, 2005-09							California		
<i>Percentage of families and people whose income in the past 12 months is below the poverty level</i>									
All families							6.1%	9.8%	
Families w/ related children under 18 years							8.9%	14.5%	
Families w/ female householder, no husband present							15.9%	24.2%	
Families w/ female householder, no husband present w/ related children under 18 years							20.7%	32.2%	
All people							9.3%	13.2%	
Under 18 years							13.2%	18.3%	
18 to 64 years							7.2%	11.9%	
65 years and over							10.4%	8.4%	
N. Educational Attainment, 2005-09			% at each level of educational attainment						
			White, NH	Black	Asian	Hispanic	Total		
<b>Population 25 years and over</b>			1,477	237	424	7,910	10,234		
Less than high school			16.5%	5.9%	5.2%	30.3%	26.4%		
High school graduate (includes equivalency)			38.9%	34.6%	34.0%	35.3%	35.5%		
Some college or associate's degree			25.3%	48.1%	17.2%	28.4%	28.2%		
Bachelor's degree or higher			19.4%	11.4%	43.6%	6.0%	9.9%		
O. Employment Status, 2010-11			2010	June 2011					
In civilian labor force			7,800	7,700					
Employed			6,900	6,900					
Unemployed, % of labor force			10.6%	10.3%	Source: CA Employment Development Department				
P. Occupation, 2005-09			Estimate		Percent				
<b>Civilian employed population, 16 yrs &amp; over</b>			7,019		100.0%				
Management, professional, and related occupations			1,821		25.9%				
Service occupations			1,204		17.2%				
Sales and office occupations			2,051		29.2%				
Farming, fishing, and forestry occupations			0		0.0%				
Construction, extraction, maintenance, and repair occupations			431		6.1%				
Production, transportation, and material moving occupations			1,512		21.5%				
Q. Class of Worker, 2005-09			Estimate		Percent				
<b>Civilian employed population, 16 yrs &amp; over</b>			7,019		100.0%				
Private, for profit, wage and salary employee			4,863		69.3%				
Private, not for profit, wage and salary employee			410		5.8%				
Private, for profit, wage and salary self-employed in own business			48		0.7%				
Government workers			1,315		18.7%				
Self-employed in own not incorporated business			368		5.2%				
Unpaid family workers in family business			15		0.2%				

Source: American Community Survey 2005-09, unless otherwise stated

ProfileTemplate 9-8-11.xlsr 9/12/2011 11:50

Note: In the American Community Survey and for US Census variables other than population, Hispanic origin is not broken out for all races. White, NH represents White, Non-Hispanic. Black and Asian are Hispanic inclusive.