

Highlights



Population Growth: Population in Sausalito declined by 4% over the past ten years to 7,000, in contrast to the statewide growth rate of 10%. The largest decline was in the working-age white, non-Hispanic population (-1,000).

Diversity: The racial and ethnic composition stayed largely the same over the past decade, remaining predominantly white, non-Hispanic at 87% of the total population. The small Hispanic and Asian population shares increased slightly.

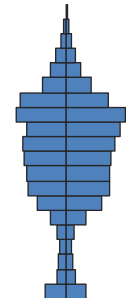
Age Structure: Sausalito is much older than the state overall with a median age of 51, compared with the California median age of 35. The share of the population age 65+ is 21% of total, nearly double the 11% share statewide.

Households: Single-person households are especially common here, making up 47% of all households compared with 23% statewide. Only 8% of households are consist of married couples with children, compared with 23% in California. Among individuals 65+, 41% live alone, compared with 25% for the state.

Education: The population is highly educated, with 72% of adults having attained a Bachelor’s degree or higher, compared with 30% of adults in the state overall. Only 1% of the population has less than a high school degree, compared with 20% statewide.

Income: Median household income is \$107,000, 78% higher than California as a whole. Only 11% of households reported income of less than \$25,000, lower than the 20% of households statewide.

Foreign Born: The foreign-born population accounts for only 15% of the total, compared with 27% statewide. Most of the immigrants, 62%, are from Europe.



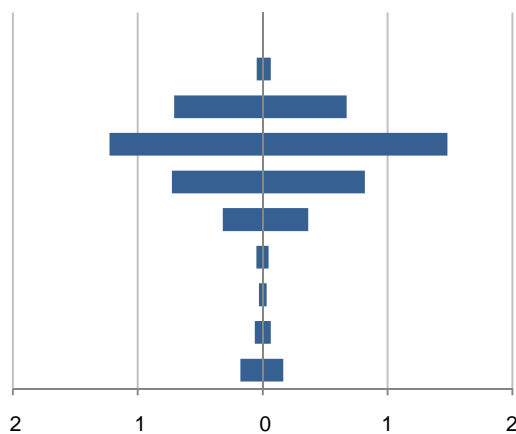
Population by Age

This demographic profile is part of a series of library jurisdiction profiles prepared for the California State Library by the Stanford Center on Longevity. The project, "Understanding California's Shifting Demographics," was supported in whole by the U.S. Institute of Museum and Library Services under the provisions of the Library Services and Technology Act, administered in California by the State Librarian. The opinions expressed herein do not necessarily reflect the position or policy of the U.S. Institute of Museum and Library Services or the California State Library, and no official endorsement by the U.S. Institute of Museum and Library Services or the California State Library should be inferred.

Key Indicators			
		2000	2010
Population Growth			
	Total population	7,330	7,061
	10-year growth	2.5%	-3.7%
Diversity			
	% Hispanic	3.3%	4.1%
	% Asian, non-Hispanic	4.1%	4.8%
	% White, non-Hispanic	89.4%	87.4%
	% Black, non-Hispanic	0.6%	0.9%
Aging			
	% 65+	12.3%	21.2%
	Median age	45.4	51.1
Households			
	% Married couple with children	7.8%	7.7%
	% Living alone	47.0%	46.9%

1. Population by Library-Defined Age Group, 2010

In thousands; males on left, females on right

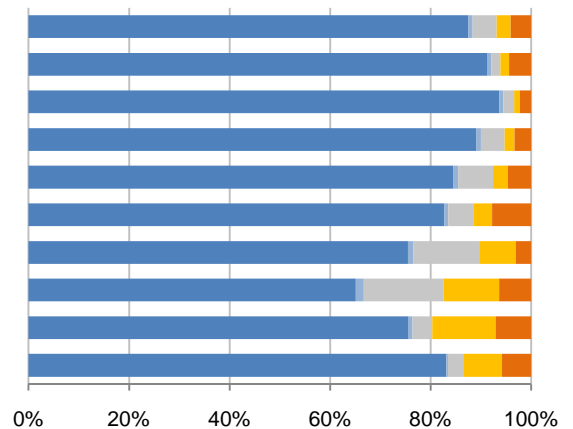


2. Race and Ethnicity by Library-Defined Age Group, 2010

Legend: White,NH (dark blue), Black,NH (medium blue), Asian,NH (grey), Other,NH (yellow), Hispanic (orange)

Age group

- Total
- 85+, Oldest
- 65 to 84, Older adults
- 46 to 64, Midlife
- 33 to 45, Adult
- 19 to 32, Young
- 14 to 18, Teens
- 11 to 13, Tweens
- 6 to 10, School age
- 0 to 5, Infants/toddlers

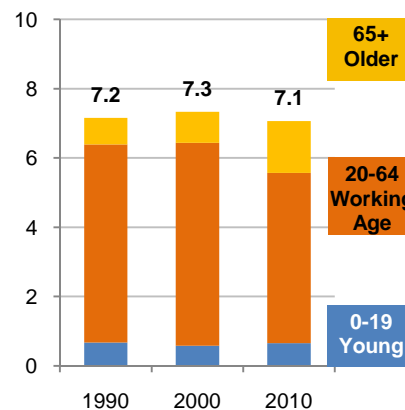


3. Population Growth by Library-Defined Age Group, 2000-10

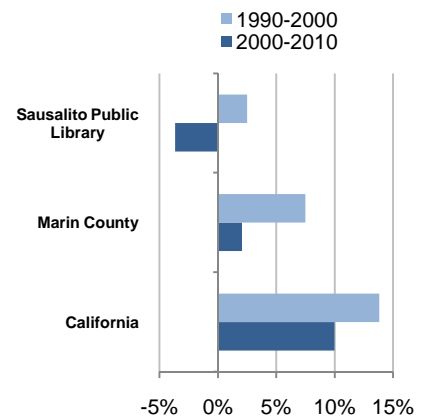
	2010	Change	% Change
Total	7,061	-269	-3.7%
85+	114	38	50.0%
65 to 84	1,381	559	68.0%
46 to 64	2,705	28	1.0%
33 to 45	1,545	-457	-22.8%
19 to 32	684	-501	-42.3%
14 to 18	98	-53	-35.1%
11 to 13	63	-12	-16.0%
6 to 10	127	25	24.5%
0 to 5	344	104	43.3%

4. Population Total, 1990-2010

In thousands



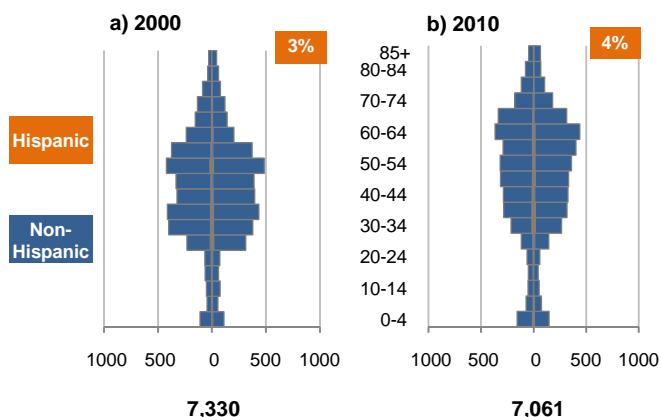
5. 10-Year Population Change



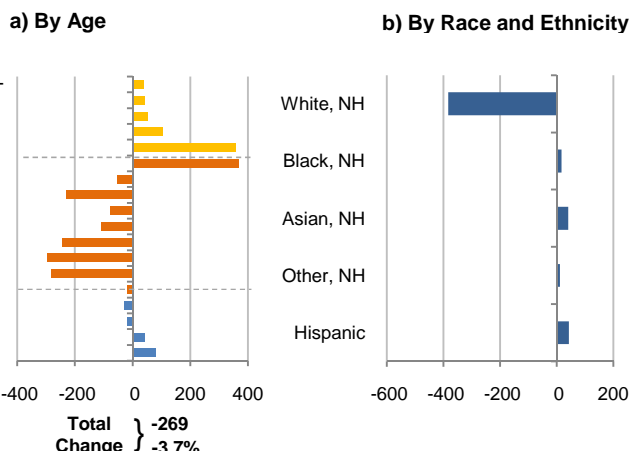
Source: US Census 2010, 2000, or 1990

6. Population by 5-Year Age Brackets

Males on left, females on right

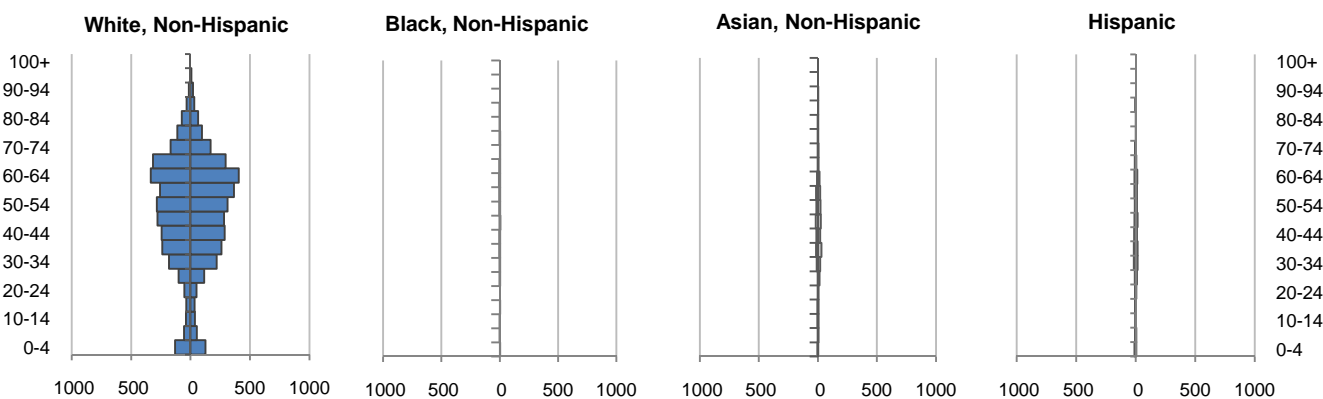


7. 10-Year Change in Population, 2000-10



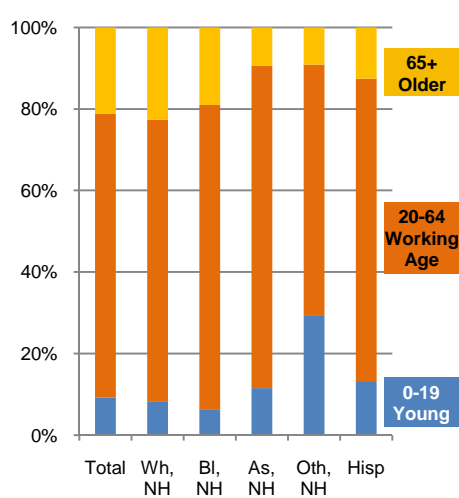
8. Population by Age, Race, and Ethnicity, 2010

Males on left, females on right

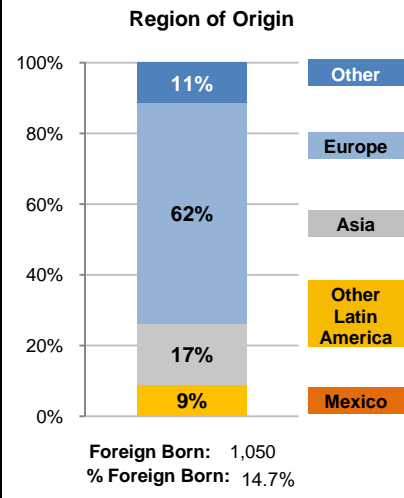


	White, NH	Black, NH	Asian, NH	Hispanic	Total*
Population	6,174	63	340	287	7,061
Share of Total	87.4%	0.9%	4.8%	4.1%	100.0%
% 65+	22.6%	19.0%	9.4%	12.5%	21.2%
% 20-64	69.1%	74.6%	79.1%	74.2%	69.6%
% under 5	4.1%	1.6%	2.4%	5.6%	4.3%

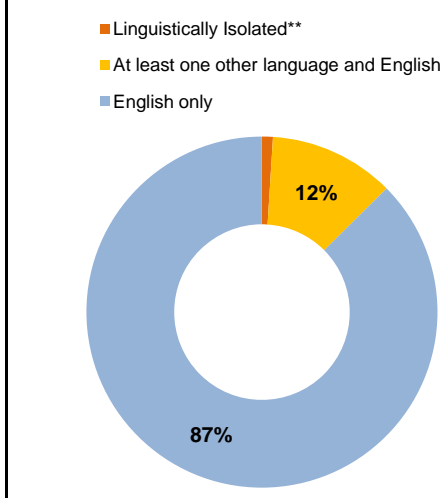
9. Age Mix by Race and Ethnicity, 2010



10. Foreign Born, 2005-09



11. Household Language, 2005-09

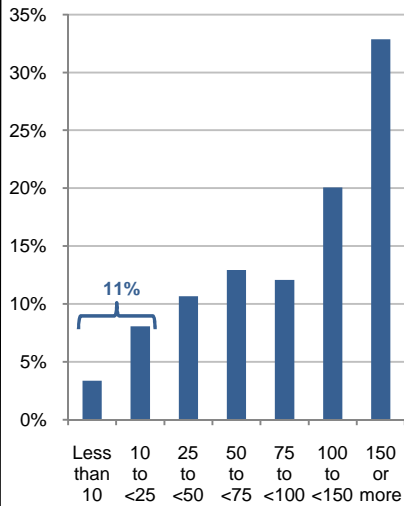


Wh=White; Bl=Black; As=Asian; Oth=Other Race or Two or More Races; Hisp=Hispanic; NH=Non-Hispanic; ACS=American Community Survey 2005-09
 *See pages 5-6 for detail on Other, Non-Hispanic
 **Linguistically Isolated = No one in the household age 14 and over speaks English at least "very well"

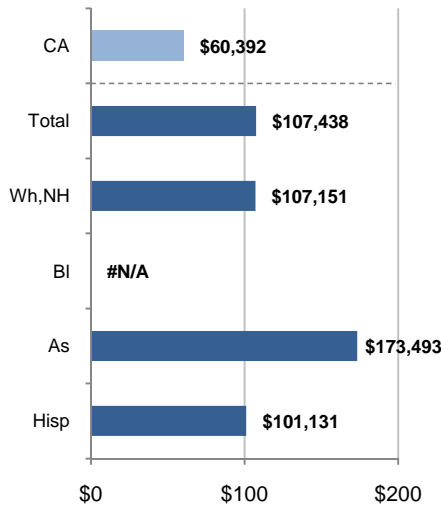
12. Household Income, 2005-09

In thousands of \$ (2009)

a) Income Distribution

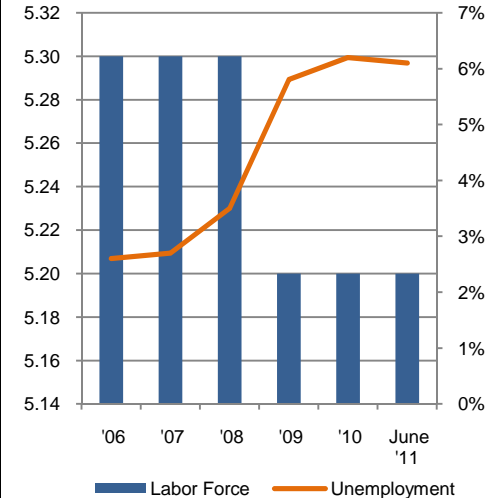


b) Median Household Income by Race and Ethnicity*



13. Labor Force and Unemployment, 2006-11

Labor Force In thousands Unemployment Rate

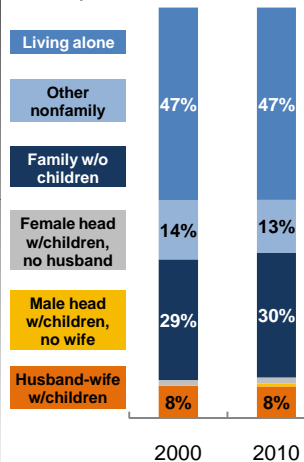


Source: CA Employment Development Department

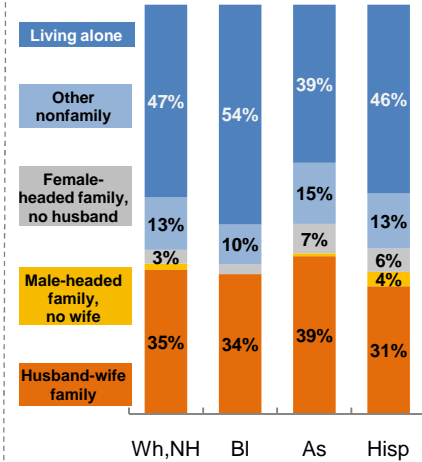
14. Household Type, 2010

% of all households

a) Total, 2000-10

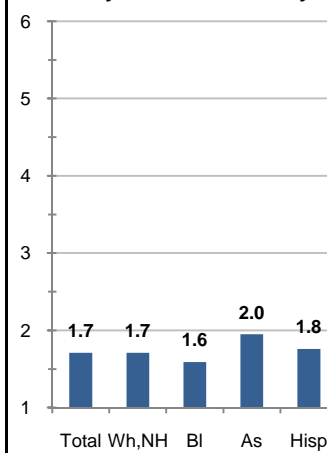


b) By Race and Ethnicity,* 2010

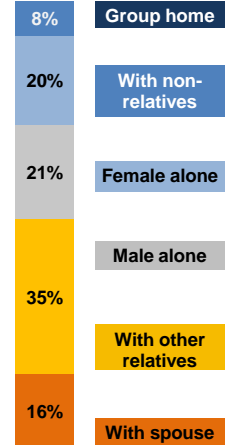


15. Average Household Size, 2010

By Race and Ethnicity*



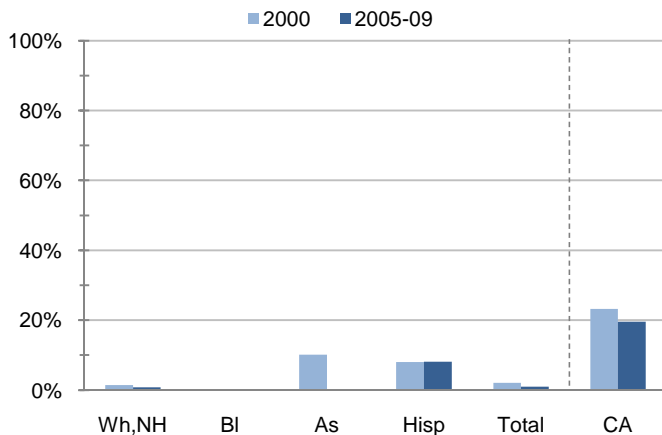
16. Living Arrangements Age 65+, 2005-09



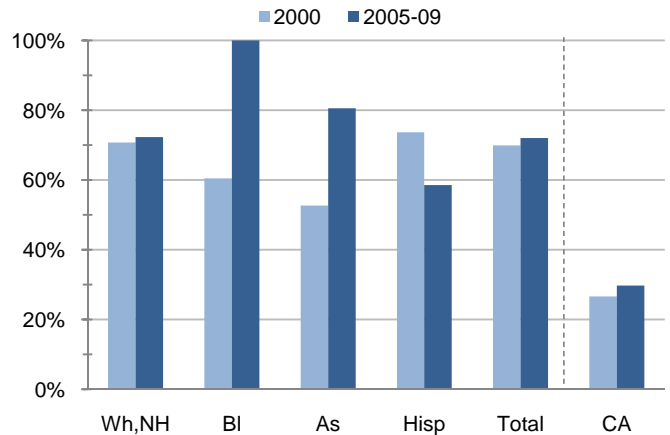
Source: ACS 2005-09

17. Educational Attainment for the Population Age 25 and Over by Race and Ethnicity*

a) % of Adults Who Did Not Complete High School



b) % of Adults Who Attained a BA or Higher



Source: Census 2000, ACS 2005-09

*Wh,NH=White,Non-Hispanic; Bl=Black,Hispanic Inclusive; As=Asian,Hispanic Inclusive; Hisp=Hispanic(Includes all races); CA=California Total

Note: In the American Community Survey and for Census variables other than population, Hispanic origin is not broken out for all races.

	White, Non- Hispanic	Black, Non- Hispanic	Asian, Non- Hispanic	Other, Non- Hispanic	Detail for Other, Non-Hispanic				Hispanic or Latino	Total Population
					American Indian & Alaska Native	Native Hawaiian & Pacific Islander	Some Other Race	Two or More Races		
A. Total Population										
2000 Total	6,556	46	299	185	20	16	10	139	244	7,330
2000 % of Total	89.4%	0.6%	4.1%	2.5%	0.3%	0.2%	0.1%	1.9%	3.3%	100.0%
2010 Total	6,174	63	340	197	13	8	20	156	287	7,061
2010 % of Total	87.4%	0.9%	4.8%	2.8%	0.2%	0.1%	0.3%	2.2%	4.1%	100.0%
B. Population in Major Age Groups by Race and Ethnicity										
2000										
0-19	461	3	31	56	0	0	2	54	25	576
20-64	5,248	40	247	122	18	16	8	80	199	5,856
65+	847	3	21	7	2	0	0	5	20	898
85+	75	0	0	0	0	0	0	0	1	76
2010										
0-19	511	4	39	58	1	0	7	50	38	650
20-64	4,266	47	269	121	12	6	13	90	213	4,916
65+	1,397	12	32	18	0	2	0	16	36	1,495
85+	104	1	2	2	0	0	0	2	5	114
C. Age Mix for Each Racial and Ethnic Group										
2000										
0-19	7.0%	6.5%	10.4%	30.3%	0.0%	0.0%	20.0%	38.8%	10.2%	7.9%
20-64	80.0%	87.0%	82.6%	65.9%	90.0%	100.0%	80.0%	57.6%	81.6%	79.9%
65+	12.9%	6.5%	7.0%	3.8%	10.0%	0.0%	0.0%	3.6%	8.2%	12.3%
85+	1.1%	0.0%	0.0%	0.0%	0.0%	0.0%	0.0%	0.0%	0.4%	1.0%
2010										
0-19	8.3%	6.3%	11.5%	29.4%	7.7%	0.0%	35.0%	32.1%	13.2%	9.2%
20-64	69.1%	74.6%	79.1%	61.4%	92.3%	75.0%	65.0%	57.7%	74.2%	69.6%
65+	22.6%	19.0%	9.4%	9.1%	0.0%	25.0%	0.0%	10.3%	12.5%	21.2%
85+	1.7%	1.6%	0.6%	1.0%	0.0%	0.0%	0.0%	1.3%	1.7%	1.6%
D. Racial and Ethnic Mix for Each Age Group										
2000										
0-19	80.0%	0.5%	5.4%	9.7%	0.0%	0.0%	0.3%	9.4%	4.3%	100.0%
20-64	89.6%	0.7%	4.2%	2.1%	0.3%	0.3%	0.1%	1.4%	3.4%	100.0%
65+	94.3%	0.3%	2.3%	0.8%	0.2%	0.0%	0.0%	0.6%	2.2%	100.0%
85+	98.7%	0.0%	0.0%	0.0%	0.0%	0.0%	0.0%	0.0%	1.3%	100.0%
2010										
0-19	78.6%	0.6%	6.0%	8.9%	0.2%	0.0%	1.1%	7.7%	5.8%	100.0%
20-64	86.8%	1.0%	5.5%	2.5%	0.2%	0.1%	0.3%	1.8%	4.3%	100.0%
65+	93.4%	0.8%	2.1%	1.2%	0.0%	0.1%	0.0%	1.1%	2.4%	100.0%
85+	91.2%	0.9%	1.8%	1.8%	0.0%	0.0%	0.0%	1.8%	4.4%	100.0%
E. Population Growth										
2000-10, Change										
0-19	50	1	8	2	1	0	5	-4	13	74
20-64	-982	7	22	-1	-6	-10	5	10	14	-940
65+	550	9	11	11	-2	2	0	11	16	597
85+	29	1	2	2	0	0	0	2	4	38
Total	-382	17	41	12	-7	-8	10	17	43	-269
2000-10, % Change										
0-19	10.8%	33.3%	25.8%	3.6%	N/A	N/A	250.0%	-7.4%	52.0%	12.8%
20-64	-18.7%	17.5%	8.9%	-0.8%	-33.3%	-62.5%	62.5%	12.5%	7.0%	-16.1%
65+	64.9%	300.0%	52.4%	157.1%	-100.0%	N/A	N/A	220.0%	80.0%	66.5%
85+	38.7%	N/A	N/A	N/A	N/A	N/A	N/A	N/A	400.0%	50.0%
Total	-5.8%	37.0%	13.7%	6.5%	-35.0%	-50.0%	100.0%	12.2%	17.6%	-3.7%

Source: US Census 2010, 2000

	White, Non- Hispanic	Black, Non- Hispanic	Asian, Non- Hispanic	Other, Non- Hispanic	Detail for Other, Non-Hispanic				Hispanic or Latino	Total Population 2010
					American Indian & Alaska Native	Native Hawaiian & Pacific Islander	Some Other Race	Two or More Races		
F. Population by Library-Defined Age Groups, 2010										
0-5	286	1	11	26	0	0	4	22	20	344
6-10	96	1	5	16	1	0	2	13	9	127
11-13	41	1	10	7	0	0	1	6	4	63
14-18	74	1	13	7	0	0	0	7	3	98
19-32	566	5	35	25	0	2	2	21	53	684
33-45	1,305	16	107	45	3	1	6	35	72	1,545
46-64	2,409	26	127	53	9	3	5	36	90	2,705
65-84	1,293	11	30	16	0	2	0	14	31	1,381
85+	104	1	2	2	0	0	0	2	5	114
Total	6,174	63	340	197	13	8	20	156	287	7,061
G. Population by 5-Year Age Brackets, 2010										
0-4	256	1	8	22	0	0	2	20	16	303
5-9	108	1	8	15	1	0	3	11	12	144
10-14	77	1	13	13	0	0	2	11	5	109
15-19	70	1	10	8	0	0	0	8	5	94
20-24	102	0	7	5	0	1	0	4	10	124
25-29	218	3	16	8	0	0	1	7	18	263
30-34	401	3	30	15	1	1	1	12	33	482
35-39	497	6	47	19	1	1	2	15	34	603
40-44	530	6	34	20	1	0	4	15	24	614
45-49	559	8	44	11	0	1	2	8	26	648
50-54	596	6	35	23	3	2	3	15	20	680
55-59	622	6	34	10	2	0	0	8	23	695
60-64	741	9	22	10	4	0	0	6	25	807
65-69	610	7	10	12	0	1	0	11	14	653
70-74	339	1	7	2	0	0	0	2	10	359
75-79	208	2	7	1	0	1	0	0	4	222
80-84	136	1	6	1	0	0	0	1	3	147
85-89	62	1	1	1	0	0	0	1	5	70
90-94	35	0	1	1	0	0	0	1	0	37
95-99	7	0	0	0	0	0	0	0	0	7
100+	0	0	0	0	0	0	0	0	0	0
Total	6,174	63	340	197	13	8	20	156	287	7,061
H. Median Age, 2000-10										
	White, Non- Hispanic	Black, Hispanic Inclusive	Asian, Hispanic Inclusive		American Indian & Alaska Native, Hispanic Inclusive	Native Hawaiian & Pacific Islander, Hispanic Inclusive	Some Other Race, Hispanic Inclusive	Two or More Races, Hispanic Inclusive	Hispanic or Latino	Total Population
2000	46.2	50.3	40.9		41.5	38.5	34.5	31.3	38.8	45.4
2010	52.3	50.8	44.8		52.0	44.5	35.8	36.8	42.2	51.1

Source: US Census 2010, 2000

Note: In the American Community Survey and for Census variables other than population, Hispanic origin is not broken out for all races.

I. Income Distribution, 2005-09			J. Median Household Income by Race and Ethnicity, 2005-09 (\$2009)						
Range (ths)	Households	% of Total	White, NH	Black	Asian	Hispanic	Total	% of CA	California
<\$10	145	3.4%	\$107,151	#N/A	\$173,493	\$101,131	\$107,438	177.9%	\$60,392
\$10 to <\$25	348	8.1%							
\$25 to <\$50	461	10.7%							
\$50 to <\$75	559	12.9%							
\$75 to <\$100	522	12.1%							
\$100 to <\$150	867	20.1%							
\$150+	1,420	32.9%							
K. Household Type, 2000-10			2000	2000,%	2010	2010,%			
Total households			4,275	100.0%	4,112	100.0%			
Family Households			1,651	38.6%	1,653	40.2%			
Husband-wife w/children			335	7.8%	317	7.7%			
Female head, no husband, w/children			52	1.2%	58	1.4%			
Male head, no wife, w/children			8	0.2%	30	0.7%			
Without children			1,256	29.4%	1,248	30.4%			
Nonfamily households			2,624	61.4%	2,459	59.8%			
Living alone			2,008	47.0%	1,927	46.9%			
Other nonfamily			616	14.4%	532	12.9%	Source: US Census 2010, 2000		
L. Household Type by Race and Ethnicity, 2010			White, NH	Black	Asian	Hispanic	Total		
Total households			3,719	41	140	141	4,112		
Husband-wife family			35.2%	34.1%	38.6%	31.2%	35.1%		
Family with male head, no wife			1.5%	0.0%	0.7%	3.5%	1.6%		
Family with female head, no husband			3.3%	2.4%	7.1%	5.7%	3.6%		
Living alone			47.1%	53.7%	38.6%	46.1%	46.9%	Source: US	
Other nonfamily			12.9%	9.8%	15.0%	13.5%	12.9%	Census 2010	
M. Poverty, 2005-09									
Percentage of families and people whose income in the past 12 months is below the poverty level								California	
All families						0.0%	9.8%		
Families w/ related children under 18 years						0.0%	14.5%		
Families w/ female householder, no husband present						0.0%	24.2%		
Families w/ female householder, no husband present w/ related children under 18 years						0.0%	32.2%		
All people						5.0%	13.2%		
Under 18 years						0.0%	18.3%		
18 to 64 years						6.0%	11.9%		
65 years and over						3.1%	8.4%		
N. Educational Attainment, 2005-09									
			% at each level of educational attainment						
			White, NH	Black	Asian	Hispanic	Total		
Population 25 years and over			5,737	15	257	198	6,465		
Less than high school			0.8%	0.0%	0.0%	8.1%	1.0%		
High school graduate (includes equivalency)			5.4%	0.0%	19.5%	0.0%	6.9%		
Some college or associate's degree			21.5%	0.0%	0.0%	33.3%	20.1%		
Bachelor's degree or higher			72.3%	100.0%	80.5%	58.6%	72.0%		
O. Employment Status, 2010-11									
			2010	June 2011					
In civilian labor force			5,200	5,200					
Employed			4,900	4,900					
Unemployed, % of labor force			6.2%	6.1%	Source: CA Employment Development Department				
P. Occupation, 2005-09									
					Estimate	Percent			
Civilian employed population, 16 yrs & over					4,899	100.0%			
Management, professional, and related occupations					3,192	65.2%			
Service occupations					225	4.6%			
Sales and office occupations					1,265	25.8%			
Farming, fishing, and forestry occupations					0	0.0%			
Construction, extraction, maintenance, and repair occupations					92	1.9%			
Production, transportation, and material moving occupations					125	2.6%			
Q. Class of Worker, 2005-09									
					Estimate	Percent			
Civilian employed population, 16 yrs & over					4,899	100.0%			
Private, for profit, wage and salary employee					2,518	51.4%			
Private, not for profit, wage and salary employee					439	9.0%			
Private, for profit, wage and salary self-employed in own business					615	12.6%			
Government workers					355	7.2%			
Self-employed in own not incorporated business					972	19.8%			
Unpaid family workers in family business					0	0.0%			

Source: American Community Survey 2005-09, unless otherwise stated

ProfileTemplate 9-8-11.xlsr 9/12/2011 13:57

Note: In the American Community Survey and for US Census variables other than population, Hispanic origin is not broken out for all races. White, NH represents White, Non-Hispanic. Black and Asian are Hispanic inclusive.