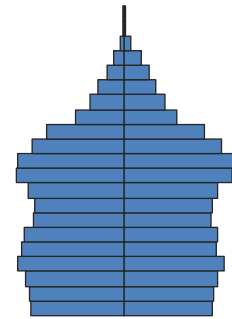


This full county profile is provided for reference. The Solano County jurisdiction includes only a part of the county and is covered in a separate profile.



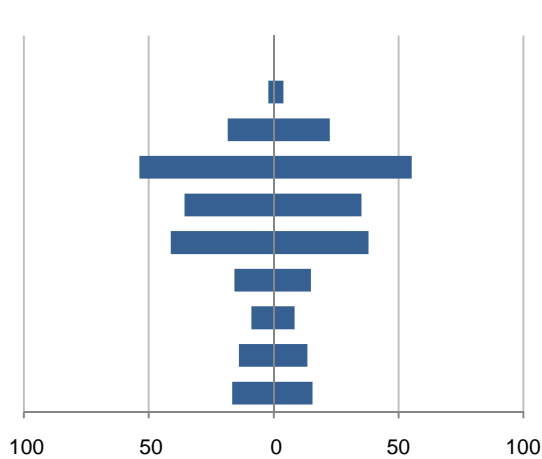
Population by Age

This demographic profile is part of a series of library jurisdiction profiles prepared for the California State Library by the Stanford Center on Longevity. The project, "Understanding California's Shifting Demographics," was supported in whole by the U.S. Institute of Museum and Library Services under the provisions of the Library Services and Technology Act, administered in California by the State Librarian. The opinions expressed herein do not necessarily reflect the position or policy of the U.S. Institute of Museum and Library Services or the California State Library, and no official endorsement by the U.S. Institute of Museum and Library Services or the California State Library should be inferred.

Key Indicators			
		2000	2010
Population Growth			
	Total population	394,542	413,344
	10-year growth	15.9%	4.8%
Diversity			
	% Hispanic	17.6%	24.0%
	% Asian, non-Hispanic	12.5%	14.3%
	% White, non-Hispanic	49.2%	40.8%
	% Black, non-Hispanic	14.6%	14.2%
Aging			
	% 65+	9.5%	11.3%
	Median age	33.9	36.9
Households			
	% Married couple with children	29.7%	22.5%
	% Living alone	19.5%	21.9%

1. Population by Library-Defined Age Group, 2010

In thousands; males on left, females on right

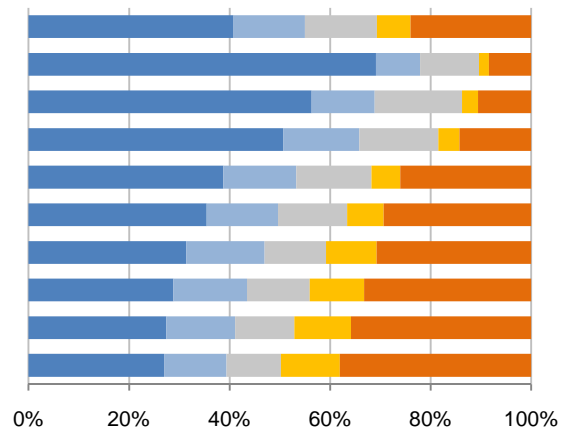


2. Race and Ethnicity by Library-Defined Age Group, 2010

White,NH Black,NH Asian,NH Other,NH Hispanic

Age group

Total
85+, Oldest
65 to 84, Older adults
46 to 64, Midlife
33 to 45, Adult
19 to 32, Young
14 to 18, Teens
11 to 13, Tweens
6 to 10, School age
0 to 5, Infants/toddlers

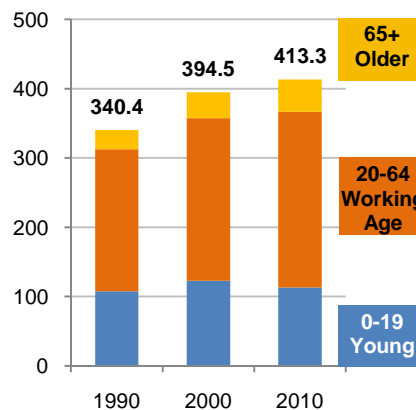


3. Population Growth by Library-Defined Age Group, 2000-10

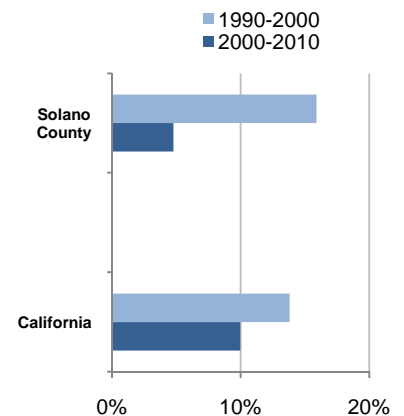
	2010	Change	% Change
Total	413,344	18,802	4.8%
85+	6,012	2,097	53.6%
65 to 84	40,835	7,324	21.9%
46 to 64	109,010	30,202	38.3%
33 to 45	70,853	-16,154	-18.6%
19 to 32	79,111	5,139	6.9%
14 to 18	30,585	323	1.1%
11 to 13	17,300	-1,953	-10.1%
6 to 10	27,402	-5,448	-16.6%
0 to 5	32,236	-2,728	-7.8%

4. Population Total, 1990-2010

In thousands



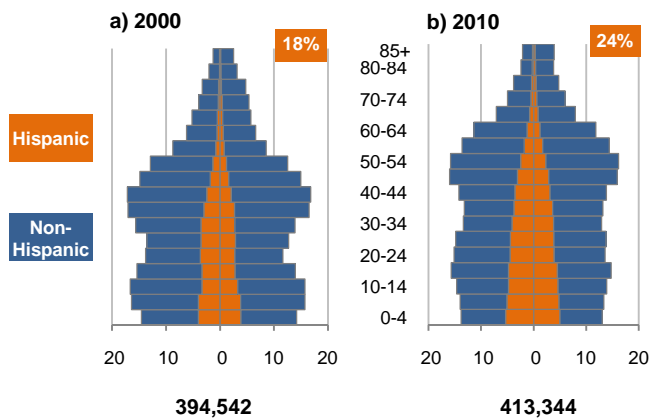
5. 10-Year Population Change



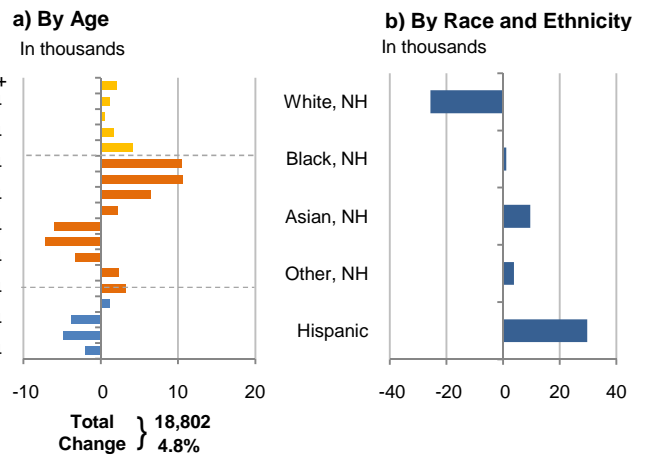
Source: US Census 2010, 2000, or 1990

6. Population by 5-Year Age Brackets

In thousands; males on left, females on right

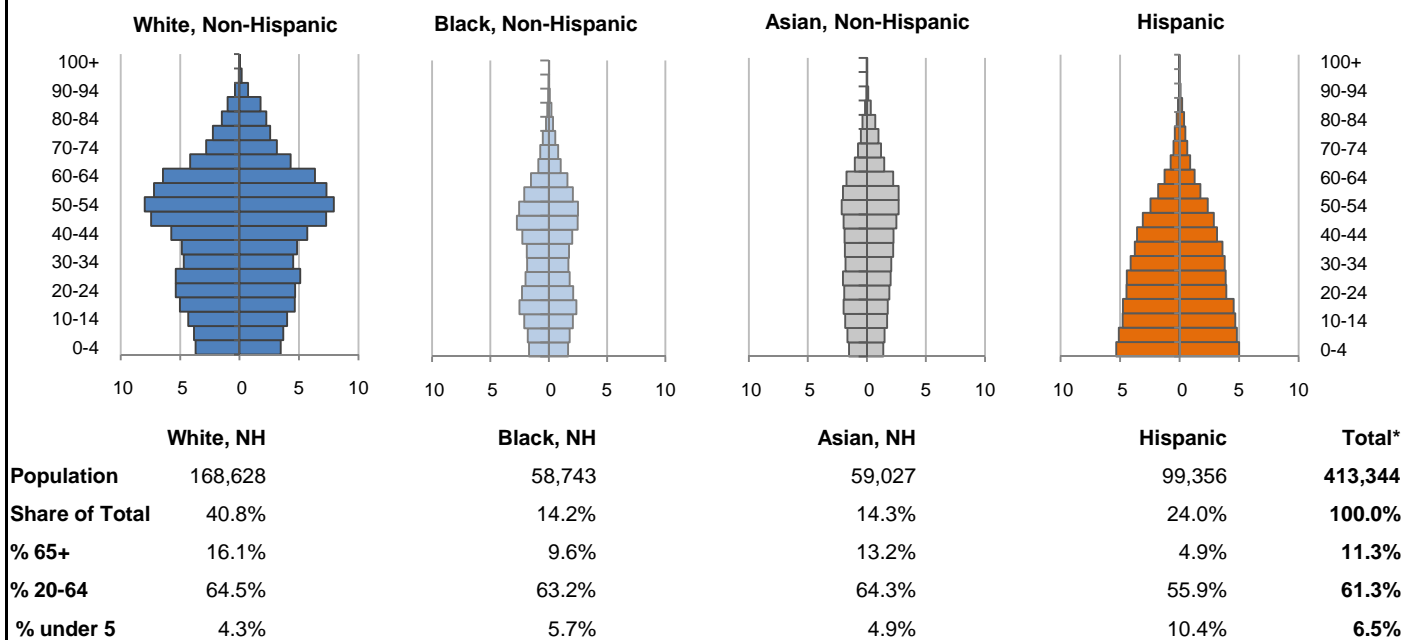


7. 10-Year Change in Population, 2000-10

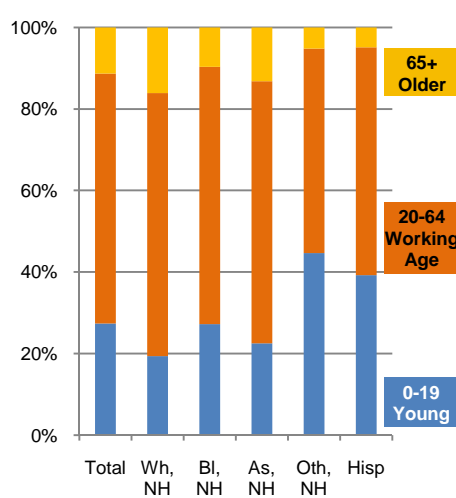


8. Population by Age, Race, and Ethnicity, 2010

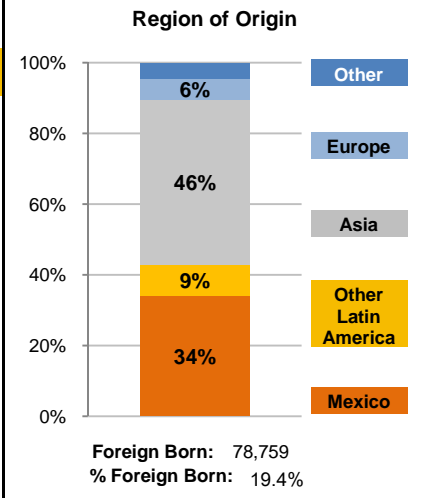
In thousands; males on left, females on right



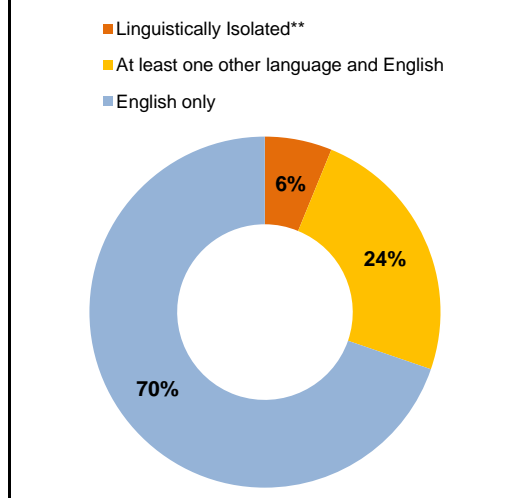
9. Age Mix by Race and Ethnicity, 2010



10. Foreign Born, 2005-09



11. Household Language, 2005-09



Wh=White; Bl=Black; As=Asian; Oth=Other Race or Two or More Races; Hisp=Hispanic; NH=Non-Hispanic; ACS=American Community Survey 2005-09

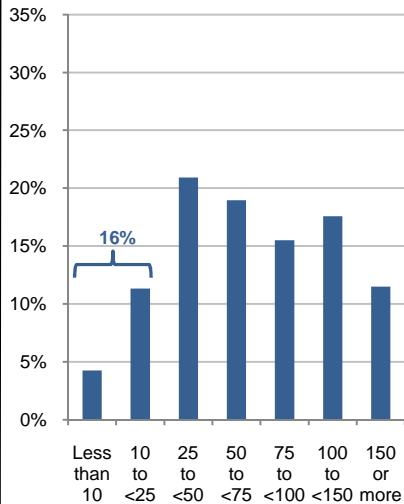
*See pages 5-6 for detail on Other, Non-Hispanic

**Linguistically Isolated = No one in the household age 14 and over speaks English at least "very well"

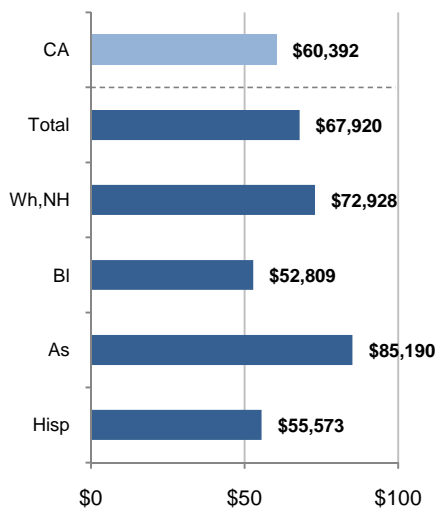
12. Household Income, 2005-09

In thousands of \$ (2009)

a) Income Distribution



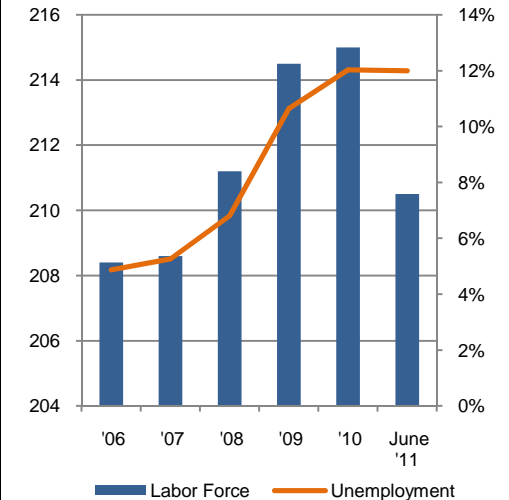
b) Median Household Income by Race and Ethnicity*



13. Labor Force and Unemployment, 2006-11

Labor Force
In thousands

Unemployment Rate

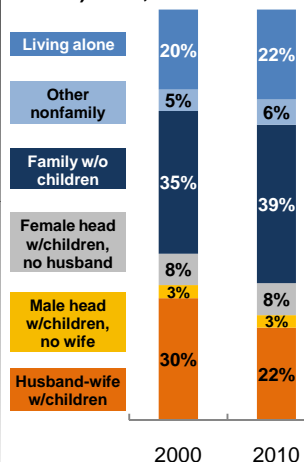


Source: CA Employment Development Department

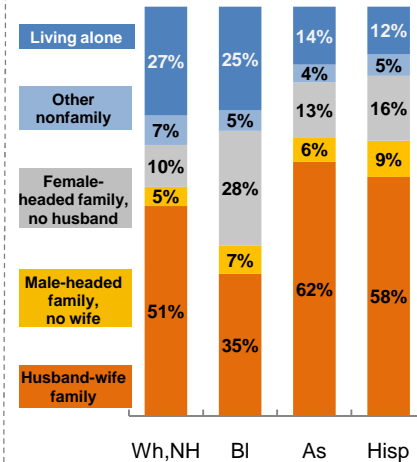
14. Household Type, 2010

% of all households

a) Total, 2000-10

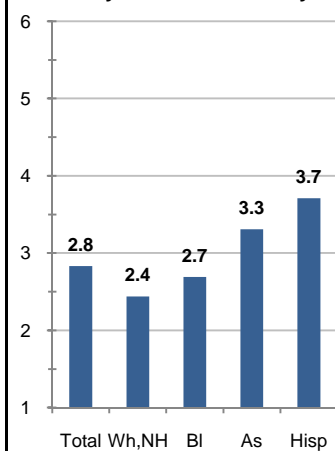


b) By Race and Ethnicity,* 2010

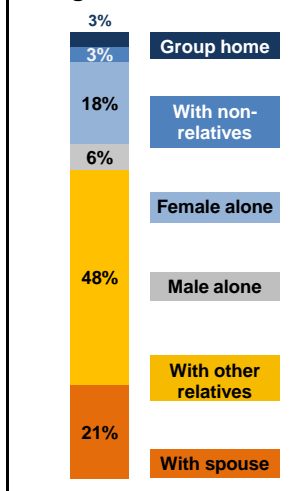


15. Average Household Size, 2010

By Race and Ethnicity*



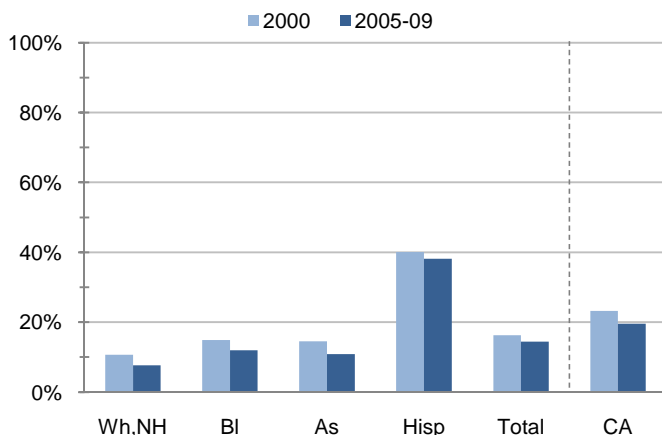
16. Living Arrangements Age 65+, 2005-09



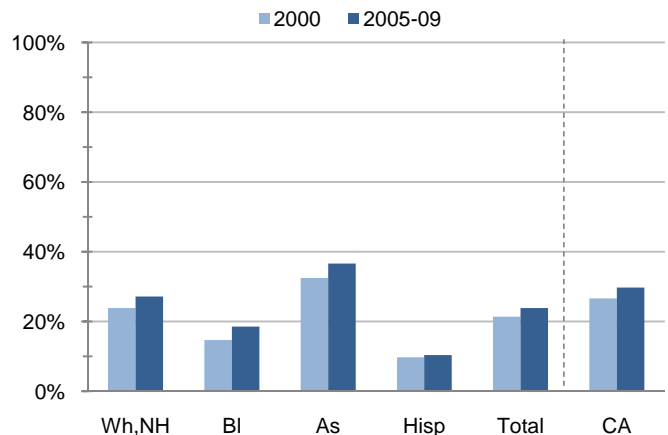
Source: ACS 2005-09

17. Educational Attainment for the Population Age 25 and Over by Race and Ethnicity*

a) % of Adults Who Did Not Complete High School



b) % of Adults Who Attained a BA or Higher



Source: Census 2000, ACS 2005-09

*Wh,NH=White,Non-Hispanic; BI=Black,Hispanic Inclusive; As=Asian,Hispanic Inclusive; Hisp=Hispanic(Includes all races); CA=California Total

Note: In the American Community Survey and for Census variables other than population, Hispanic origin is not broken out for all races.

	White, Non- Hispanic	Black, Non- Hispanic	Asian, Non- Hispanic	Other, Non- Hispanic	Detail for Other, Non-Hispanic				Hispanic or Latino	Total Population
					American Indian & Alaska Native	Native Hawaiian & Pacific Islander	Some Other Race	Two or More Races		
A. Total Population										
2000 Total	194,282	57,597	49,399	23,666	2,194	2,859	955	17,658	69,598	394,542
2000 % of Total	49.2%	14.6%	12.5%	6.0%	0.6%	0.7%	0.2%	4.5%	17.6%	100.0%
2010 Total	168,628	58,743	59,027	27,590	1,864	3,243	1,463	21,020	99,356	413,344
2010 % of Total	40.8%	14.2%	14.3%	6.7%	0.5%	0.8%	0.4%	5.1%	24.0%	100.0%
B. Population in Major Age Groups by Race and Ethnicity										
2000										
0-19	49,514	19,511	13,956	11,055	571	874	441	9,169	28,627	122,663
20-64	120,011	34,360	30,413	11,558	1,476	1,811	480	7,791	38,111	234,453
65+	24,757	3,726	5,030	1,053	147	174	34	698	2,860	37,426
85+	2,965	303	354	79	9	4	2	64	214	3,915
2010										
0-19	32,643	15,977	13,299	12,308	415	773	304	10,816	38,995	113,222
20-64	108,834	37,103	37,947	13,853	1,246	2,170	1,063	9,374	55,538	253,275
65+	27,151	5,663	7,781	1,429	203	300	96	830	4,823	46,847
85+	4,157	527	705	117	12	17	4	84	506	6,012
C. Age Mix for Each Racial and Ethnic Group										
2000										
0-19	25.5%	33.9%	28.3%	46.7%	26.0%	30.6%	46.2%	51.9%	41.1%	31.1%
20-64	61.8%	59.7%	61.6%	48.8%	67.3%	63.3%	50.3%	44.1%	54.8%	59.4%
65+	12.7%	6.5%	10.2%	4.4%	6.7%	6.1%	3.6%	4.0%	4.1%	9.5%
85+	1.5%	0.5%	0.7%	0.3%	0.4%	0.1%	0.2%	0.4%	0.3%	1.0%
2010										
0-19	19.4%	27.2%	22.5%	44.6%	22.3%	23.8%	20.8%	51.5%	39.2%	27.4%
20-64	64.5%	63.2%	64.3%	50.2%	66.8%	66.9%	72.7%	44.6%	55.9%	61.3%
65+	16.1%	9.6%	13.2%	5.2%	10.9%	9.3%	6.6%	3.9%	4.9%	11.3%
85+	2.5%	0.9%	1.2%	0.4%	0.6%	0.5%	0.3%	0.4%	0.5%	1.5%
D. Racial and Ethnic Mix for Each Age Group										
2000										
0-19	40.4%	15.9%	11.4%	9.0%	0.5%	0.7%	0.4%	7.5%	23.3%	100.0%
20-64	51.2%	14.7%	13.0%	4.9%	0.6%	0.8%	0.2%	3.3%	16.3%	100.0%
65+	66.1%	10.0%	13.4%	2.8%	0.4%	0.5%	0.1%	1.9%	7.6%	100.0%
85+	75.7%	7.7%	9.0%	2.0%	0.2%	0.1%	0.1%	1.6%	5.5%	100.0%
2010										
0-19	28.8%	14.1%	11.7%	10.9%	0.4%	0.7%	0.3%	9.6%	34.4%	100.0%
20-64	43.0%	14.6%	15.0%	5.5%	0.5%	0.9%	0.4%	3.7%	21.9%	100.0%
65+	58.0%	12.1%	16.6%	3.1%	0.4%	0.6%	0.2%	1.8%	10.3%	100.0%
85+	69.1%	8.8%	11.7%	1.9%	0.2%	0.3%	0.1%	1.4%	8.4%	100.0%
E. Population Growth										
2000-10, Change										
0-19	-16,871	-3,534	-657	1,253	-156	-101	-137	1,647	10,368	-9,441
20-64	-11,177	2,743	7,534	2,295	-230	359	583	1,583	17,427	18,822
65+	2,394	1,937	2,751	376	56	126	62	132	1,963	9,421
85+	1,192	224	351	38	3	13	2	20	292	2,097
Total	-25,654	1,146	9,628	3,924	-330	384	508	3,362	29,758	18,802
2000-10, % Change										
0-19	-34.1%	-18.1%	-4.7%	11.3%	-27.3%	-11.6%	-31.1%	18.0%	36.2%	-7.7%
20-64	-9.3%	8.0%	24.8%	19.9%	-15.6%	19.8%	121.5%	20.3%	45.7%	8.0%
65+	9.7%	52.0%	54.7%	35.7%	38.1%	72.4%	182.4%	18.9%	68.6%	25.2%
85+	40.2%	73.9%	99.2%	48.1%	33.3%	325.0%	100.0%	31.3%	136.4%	53.6%
Total	-13.2%	2.0%	19.5%	16.6%	-15.0%	13.4%	53.2%	19.0%	42.8%	4.8%

Source: US Census 2010, 2000

	White, Non- Hispanic	Black, Non- Hispanic	Asian, Non- Hispanic	Other, Non- Hispanic	Detail for Other, Non-Hispanic				Hispanic or Latino	Total Population 2010
					American Indian & Alaska Native	Native Hawaiian & Pacific Islander	Some Other Race	Two or More Races		
F. Population by Library-Defined Age Groups, 2010										
0-5	8,685	4,012	3,483	3,776	99	170	85	3,422	12,280	32,236
6-10	7,514	3,746	3,234	3,086	95	192	61	2,738	9,822	27,402
11-13	4,986	2,535	2,153	1,879	55	139	54	1,631	5,747	17,300
14-18	9,597	4,759	3,740	3,078	130	235	84	2,629	9,411	30,585
19-32	28,042	11,235	10,871	5,740	346	720	368	4,306	23,223	79,111
33-45	27,462	10,273	10,620	4,029	331	688	364	2,646	18,469	70,853
46-64	55,191	16,520	17,145	4,573	605	799	351	2,818	15,581	109,010
65-84	22,994	5,136	7,076	1,312	191	283	92	746	4,317	40,835
85+	4,157	527	705	117	12	17	4	84	506	6,012
Total	168,628	58,743	59,027	27,590	1,864	3,243	1,463	21,020	99,356	413,344
G. Population by 5-Year Age Brackets, 2010										
0-4	7,169	3,340	2,881	3,142	80	141	74	2,847	10,320	26,852
5-9	7,510	3,599	3,147	3,128	108	175	60	2,785	9,927	27,311
10-14	8,314	4,178	3,547	3,091	79	230	79	2,703	9,445	28,575
15-19	9,650	4,860	3,724	2,947	148	227	91	2,481	9,303	30,484
20-24	10,041	4,373	3,826	2,144	118	236	110	1,680	8,377	28,761
25-29	10,469	3,770	4,031	2,020	122	277	145	1,476	8,306	28,596
30-34	9,233	3,526	3,874	1,776	115	271	159	1,231	7,909	26,318
35-39	9,681	3,627	4,089	1,577	139	277	140	1,021	7,381	26,355
40-44	11,450	4,285	4,147	1,476	122	260	135	959	6,710	28,068
45-49	14,744	5,214	4,451	1,562	177	253	115	1,017	5,975	31,946
50-54	15,911	5,032	4,827	1,439	194	221	120	904	4,795	32,004
55-59	14,501	4,150	4,735	1,075	150	201	95	629	3,548	28,009
60-64	12,804	3,126	3,967	784	109	174	44	457	2,537	23,218
65-69	8,465	1,910	2,513	509	89	91	48	281	1,634	15,031
70-74	5,932	1,543	1,965	369	53	95	20	201	1,157	10,966
75-79	4,839	1,080	1,511	263	28	61	17	157	891	8,584
80-84	3,758	603	1,087	171	21	36	7	107	635	6,254
85-89	2,788	350	498	92	8	12	4	68	362	4,090
90-94	1,104	128	165	22	4	4	0	14	112	1,531
95-99	237	45	34	3	0	1	0	2	31	350
100+	28	4	8	0	0	0	0	0	1	41
Total	168,628	58,743	59,027	27,590	1,864	3,243	1,463	21,020	99,356	413,344
H. Median Age, 2000-10										
	White, Non- Hispanic	Black, Hispanic Inclusive	Asian, Hispanic Inclusive		American Indian & Alaska Native, Hispanic Inclusive	Native Hawaiian & Pacific Islander, Hispanic Inclusive	Some Other Race, Hispanic Inclusive	Two or More Races, Hispanic Inclusive	Hispanic or Latino	Total Population
2000	38.6	31.7	36.0		33.1	30.4	25.4	18.1	24.8	33.9
2010	45.3	36.8	40.2		36.3	34.8	27.4	18.1	26.4	36.9

Source: US Census 2010, 2000

Note: In the American Community Survey and for Census variables other than population, Hispanic origin is not broken out for all races.

I. Income Distribution, 2005-09			J. Median Household Income by Race and Ethnicity, 2005-09 (\$2009)						
Range (ths)	Households	% of Total	White, NH	Black	Asian	Hispanic	Total	% of CA	California
<\$10	5,817	4.2%	\$72,928	\$52,809	\$85,190	\$55,573	\$67,920	112.5%	\$60,392
\$10 to <\$25	15,490	11.3%							
\$25 to <\$50	28,629	20.9%							
\$50 to <\$75	25,936	18.9%							
\$75 to <\$100	21,231	15.5%							
\$100 to <\$150	24,072	17.6%							
\$150+	15,731	11.5%							
K. Household Type, 2000-10			2000	2000,%	2010	2010,%			
Total households			130,440	100.0%	141,758	100.0%			
Family Households			98,163	75.3%	101,989	71.9%			
Husband-wife w/children			38,734	29.7%	31,866	22.5%			
Female head, no husband, w/children			9,986	7.7%	11,070	7.8%			
Male head, no wife, w/children			4,115	3.2%	4,333	3.1%			
Without children			45,328	34.8%	54,720	38.6%			
Nonfamily households			32,277	24.7%	39,769	28.1%			
Living alone			25,458	19.5%	31,073	21.9%			
Other nonfamily			6,819	5.2%	8,696	6.1%	Source: US Census 2010, 2000		
L. Household Type by Race and Ethnicity, 2010			White, NH	Black	Asian	Hispanic	Total		
Total households			72,019	21,631	17,991	24,357	141,758		
Husband-wife family			51.3%	34.7%	62.1%	58.4%	51.2%		
Family with male head, no wife			4.7%	7.0%	6.0%	8.8%	6.0%		
Family with female head, no husband			10.3%	28.0%	13.5%	15.9%	14.7%		
Living alone			26.6%	25.3%	14.1%	11.6%	21.9%	Source: US	
Other nonfamily			7.2%	5.0%	4.3%	5.2%	6.1%	Census 2010	
M. Poverty, 2005-09							California		
<i>Percentage of families and people whose income in the past 12 months is below the poverty level</i>									
All families							7.6%	9.8%	
Families w/ related children under 18 years							10.9%	14.5%	
Families w/ female householder, no husband present							20.0%	24.2%	
Families w/ female householder, no husband present w/ related children under 18 years							24.4%	32.2%	
All people							9.9%	13.2%	
Under 18 years							13.0%	18.3%	
18 to 64 years							9.1%	11.9%	
65 years and over							7.1%	8.4%	
N. Educational Attainment, 2005-09			% at each level of educational attainment						
			White, NH	Black	Asian	Hispanic	Total		
Population 25 years and over			127,639	36,769	39,226	46,397	260,858		
Less than high school			7.6%	11.9%	10.8%	38.1%	14.5%		
High school graduate (includes equivalency)			24.9%	26.4%	19.1%	25.0%	24.5%		
Some college or associate's degree			40.3%	43.1%	33.4%	26.5%	37.2%		
Bachelor's degree or higher			27.2%	18.6%	36.6%	10.4%	23.9%		
O. Employment Status, 2010-11			2010	June 2011					
In civilian labor force			215,000	210,500					
Employed			189,100	185,200					
Unemployed, % of labor force			12.0%	12.0%	Source: CA Employment Development Department				
P. Occupation, 2005-09			Estimate		Percent				
Civilian employed population, 16 yrs & over			182,675		100.0%				
Management, professional, and related occupations			59,377		32.5%				
Service occupations			32,880		18.0%				
Sales and office occupations			49,274		27.0%				
Farming, fishing, and forestry occupations			1,207		0.7%				
Construction, extraction, maintenance, and repair occupations			20,392		11.2%				
Production, transportation, and material moving occupations			19,545		10.7%				
Q. Class of Worker, 2005-09			Estimate		Percent				
Civilian employed population, 16 yrs & over			182,675		100.0%				
Private, for profit, wage and salary employee			116,848		64.0%				
Private, not for profit, wage and salary employee			13,859		7.6%				
Private, for profit, wage and salary self-employed in own business			3,533		1.9%				
Government workers			35,233		19.3%				
Self-employed in own not incorporated business			12,857		7.0%				
Unpaid family workers in family business			345		0.2%				

Source: American Community Survey 2005-09, unless otherwise stated

ProfileTemplate 9-8-11.xlsr 9/9/2011 14:21

Note: In the American Community Survey and for US Census variables other than population, Hispanic origin is not broken out for all races. White, NH represents White, Non-Hispanic. Black and Asian are Hispanic inclusive.