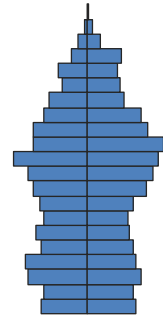


Solvang is part of the Santa Barbara Public Library jurisdiction. This individual city profile is provided for reference.



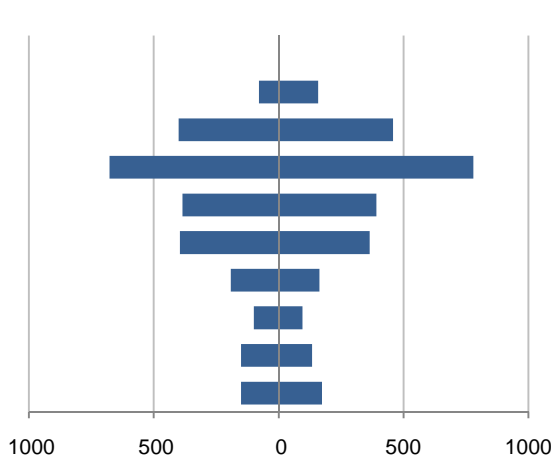
Population by Age

This demographic profile is part of a series of library jurisdiction profiles prepared for the California State Library by the Stanford Center on Longevity. The project, "Understanding California's Shifting Demographics," was supported in whole by the U.S. Institute of Museum and Library Services under the provisions of the Library Services and Technology Act, administered in California by the State Librarian. The opinions expressed herein do not necessarily reflect the position or policy of the U.S. Institute of Museum and Library Services or the California State Library, and no official endorsement by the U.S. Institute of Museum and Library Services or the California State Library should be inferred.

Key Indicators			
		2000	2010
Population Growth			
	Total population	5,332	5,245
	10-year growth	12.5%	-1.6%
Diversity			
	% Hispanic	19.9%	29.2%
	% Asian, non-Hispanic	1.0%	1.3%
	% White, non-Hispanic	76.7%	66.9%
	% Black, non-Hispanic	0.3%	0.6%
Aging			
	% 65+	22.9%	20.9%
	Median age	43.2	45.0
Households			
	% Married couple with children	24.0%	19.5%
	% Living alone	30.4%	29.3%

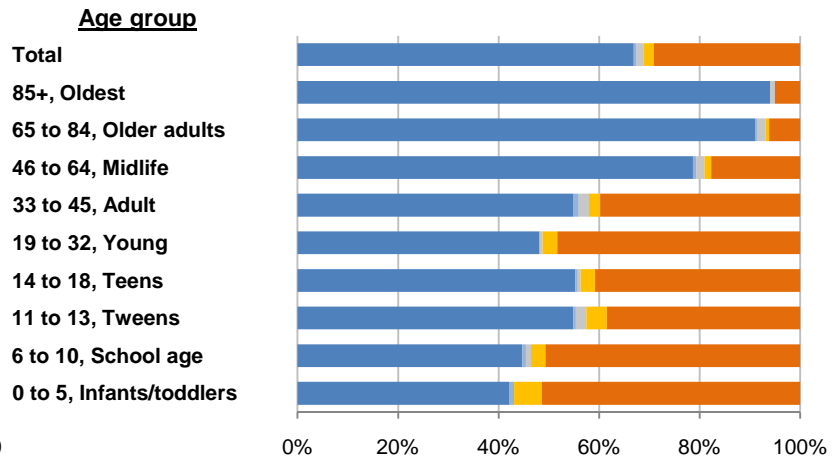
1. Population by Library-Defined Age Group, 2010

Males on left, females on right



2. Race and Ethnicity by Library-Defined Age Group, 2010

White, NH Black, NH Asian, NH Other, NH Hispanic

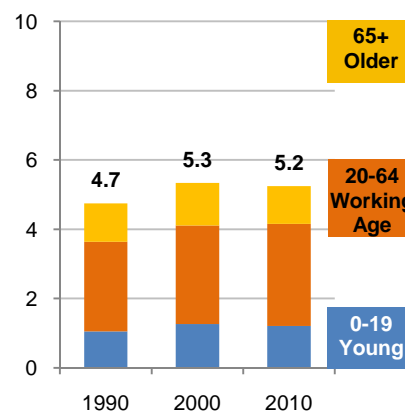


3. Population Growth by Library-Defined Age Group, 2000-10

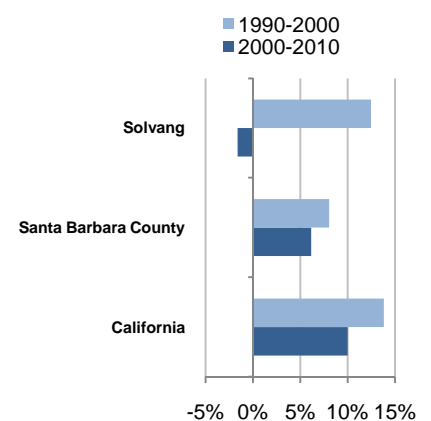
	2010	Change	% Change
Total	5,245	-87	-1.6%
85+	237	-20	-7.8%
65 to 84	858	-106	-11.0%
46 to 64	1,456	229	18.7%
33 to 45	776	-183	-19.1%
19 to 32	759	55	7.8%
14 to 18	355	35	10.9%
11 to 13	195	-34	-14.8%
6 to 10	284	-63	-18.2%
0 to 5	325	0	0.0%

4. Population Total, 1990-2010

In thousands



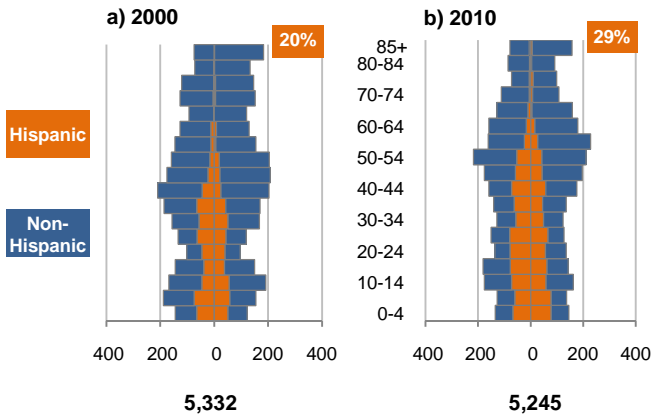
5. 10-Year Population Change



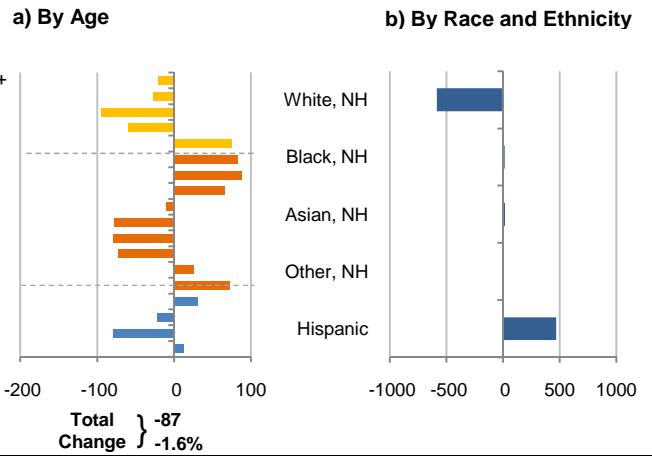
Source: US Census 2010, 2000, or 1990

6. Population by 5-Year Age Brackets

Males on left, females on right

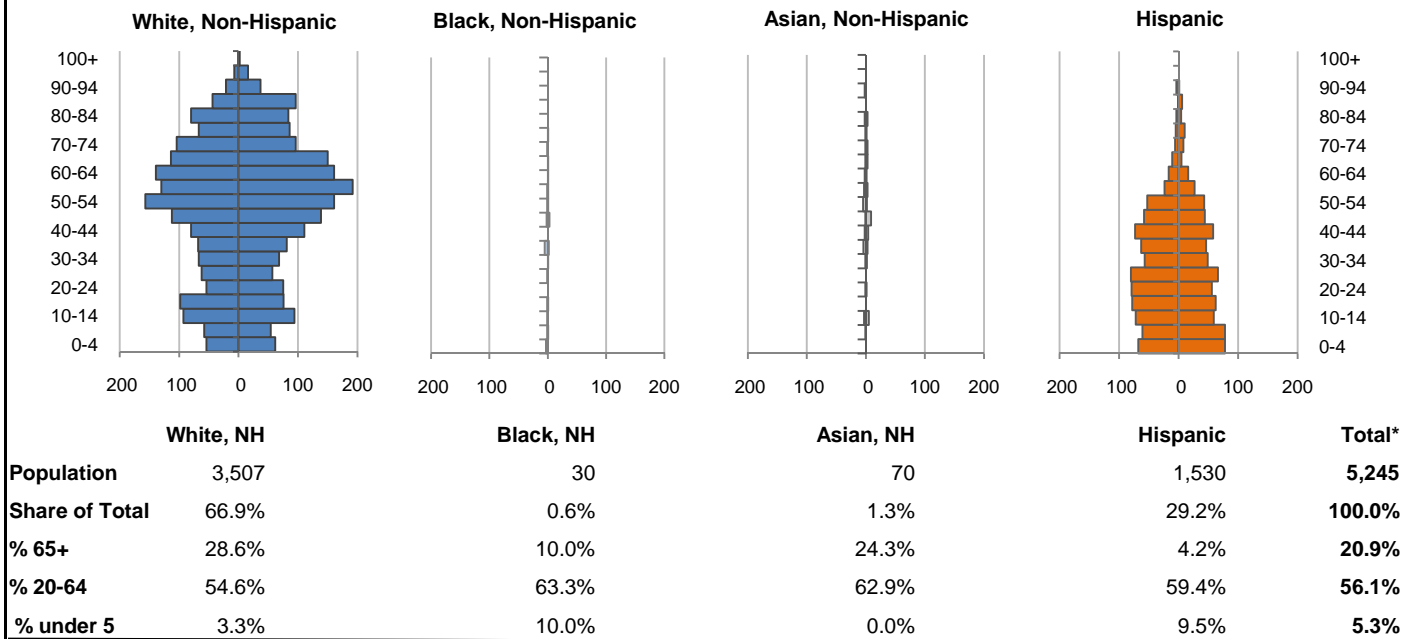


7. 10-Year Change in Population, 2000-10

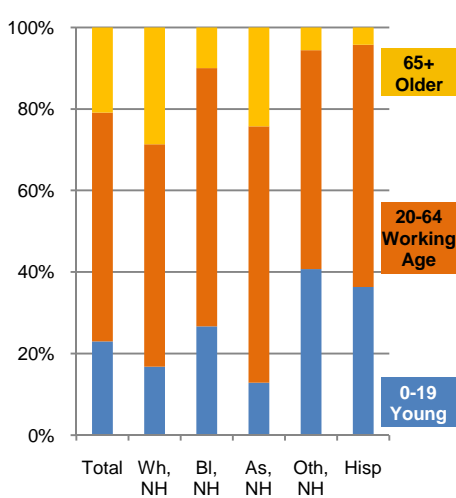


8. Population by Age, Race, and Ethnicity, 2010

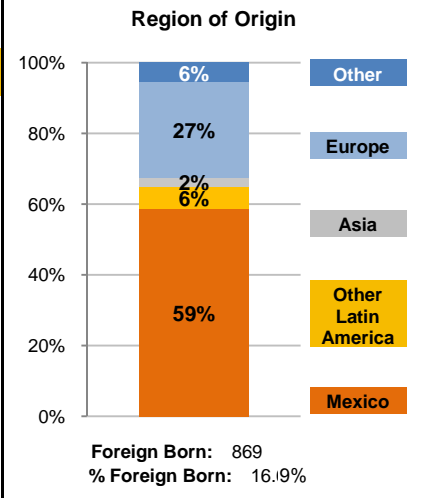
Males on left, females on right



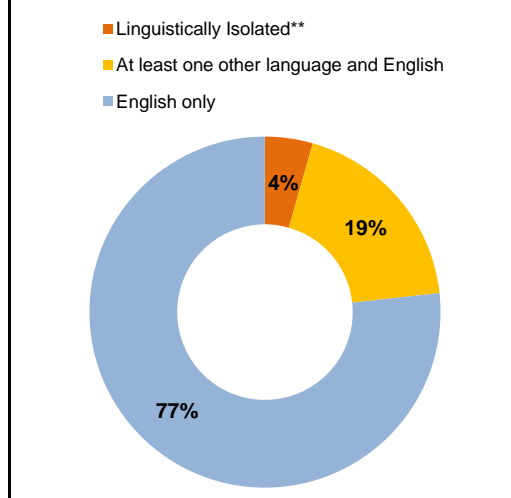
9. Age Mix by Race and Ethnicity, 2010



10. Foreign Born, 2005-09



11. Household Language, 2005-09



Wh=White; BI=Black; As=Asian; Oth=Other Race or Two or More Races; Hisp=Hispanic; NH=Non-Hispanic; ACS=American Community Survey 2005-09

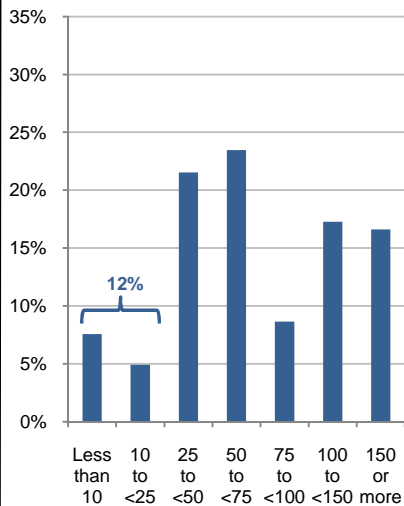
*See pages 5-6 for detail on Other, Non-Hispanic

**Linguistically Isolated = No one in the household age 14 and over speaks English at least "very well"

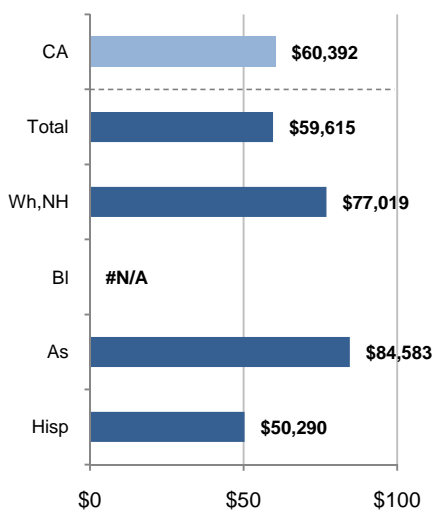
12. Household Income, 2005-09

In thousands of \$ (2009)

a) Income Distribution



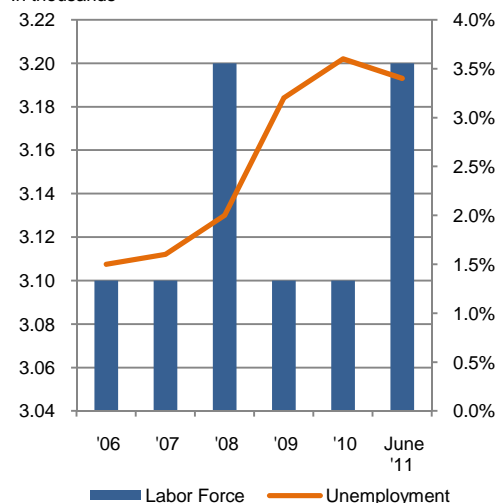
b) Median Household Income by Race and Ethnicity*



13. Labor Force and Unemployment, 2006-11

Labor Force In thousands

Unemployment Rate

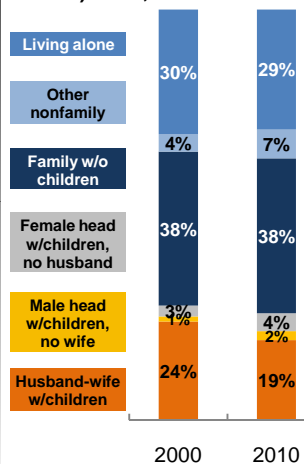


Source: CA Employment Development Department

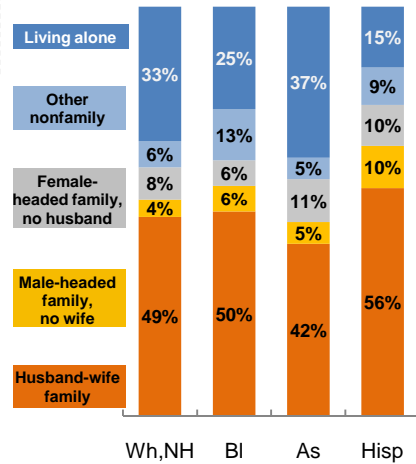
14. Household Type, 2010

% of all households

a) Total, 2000-10

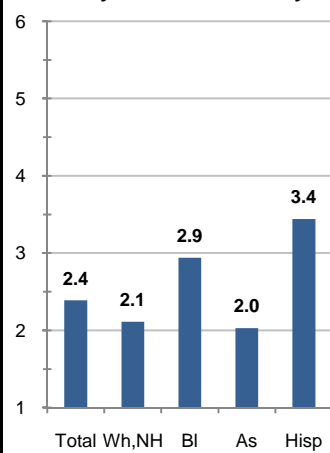


b) By Race and Ethnicity,* 2010

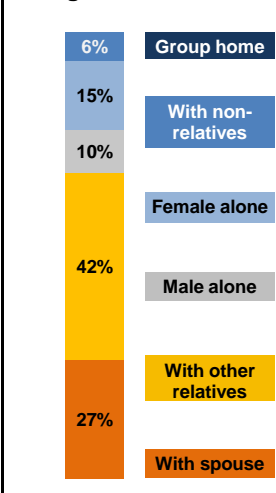


15. Average Household Size, 2010

By Race and Ethnicity*



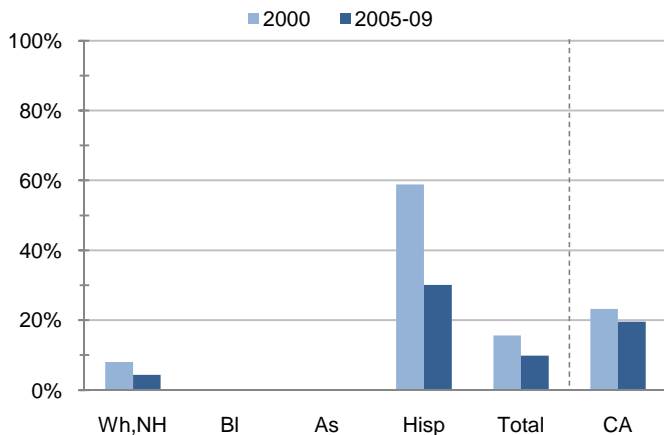
16. Living Arrangements Age 65+, 2005-09



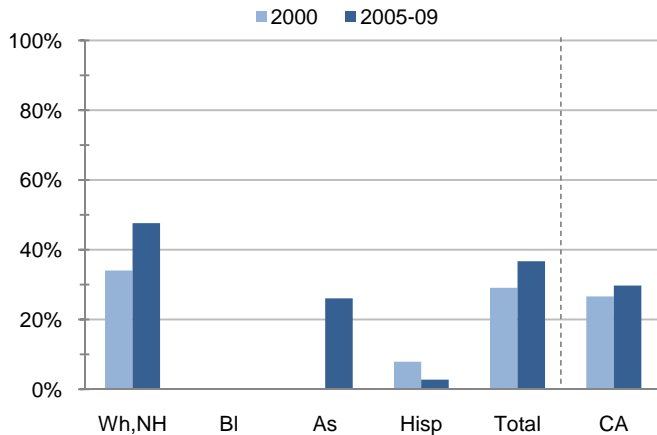
Source: ACS 2005-09

17. Educational Attainment for the Population Age 25 and Over by Race and Ethnicity*

a) % of Adults Who Did Not Complete High School



b) % of Adults Who Attained a BA or Higher



Source: Census 2000, ACS 2005-09

*Wh,NH=White,Non-Hispanic; BI=Black,Hispanic Inclusive; As=Asian,Hispanic Inclusive; Hisp=Hispanic(Includes all races); CA=California Total

Note: In the American Community Survey and for Census variables other than population, Hispanic origin is not broken out for all races.

	White, Non- Hispanic	Black, Non- Hispanic	Asian, Non- Hispanic	Other, Non- Hispanic	Detail for Other, Non-Hispanic				Hispanic or Latino	Total Population
					American Indian & Alaska Native	Native Hawaiian & Pacific Islander	Some Other Race	Two or More Races		
A. Total Population										
2000 Total	4,090	16	52	115	19	2	0	94	1,059	5,332
2000 % of Total	76.7%	0.3%	1.0%	2.2%	0.4%	0.0%	0.0%	1.8%	19.9%	100.0%
2010 Total	3,507	30	70	108	27	1	2	78	1,530	5,245
2010 % of Total	66.9%	0.6%	1.3%	2.1%	0.5%	0.0%	0.0%	1.5%	29.2%	100.0%
B. Population in Major Age Groups by Race and Ethnicity										
2000										
0-19	789	4	8	33	0	0	0	33	430	1,264
20-64	2,126	12	38	67	16	2	0	49	604	2,847
65+	1,175	0	6	15	3	0	0	12	25	1,221
85+	249	0	0	6	1	0	0	5	2	257
2010										
0-19	589	8	9	44	4	0	0	40	556	1,206
20-64	1,914	19	44	58	18	1	2	37	909	2,944
65+	1,004	3	17	6	5	0	0	1	65	1,095
85+	223	0	2	0	0	0	0	0	12	237
C. Age Mix for Each Racial and Ethnic Group										
2000										
0-19	19.3%	25.0%	15.4%	28.7%	0.0%	0.0%	N/A	35.1%	40.6%	23.7%
20-64	52.0%	75.0%	73.1%	58.3%	84.2%	100.0%	N/A	52.1%	57.0%	53.4%
65+	28.7%	0.0%	11.5%	13.0%	15.8%	0.0%	N/A	12.8%	2.4%	22.9%
85+	6.1%	0.0%	0.0%	5.2%	5.3%	0.0%	N/A	5.3%	0.2%	4.8%
2010										
0-19	16.8%	26.7%	12.9%	40.7%	14.8%	0.0%	0.0%	51.3%	36.3%	23.0%
20-64	54.6%	63.3%	62.9%	53.7%	66.7%	100.0%	100.0%	47.4%	59.4%	56.1%
65+	28.6%	10.0%	24.3%	5.6%	18.5%	0.0%	0.0%	1.3%	4.2%	20.9%
85+	6.4%	0.0%	2.9%	0.0%	0.0%	0.0%	0.0%	0.0%	0.8%	4.5%
D. Racial and Ethnic Mix for Each Age Group										
2000										
0-19	62.4%	0.3%	0.6%	2.6%	0.0%	0.0%	0.0%	2.6%	34.0%	100.0%
20-64	74.7%	0.4%	1.3%	2.4%	0.6%	0.1%	0.0%	1.7%	21.2%	100.0%
65+	96.2%	0.0%	0.5%	1.2%	0.2%	0.0%	0.0%	1.0%	2.0%	100.0%
85+	96.9%	0.0%	0.0%	2.3%	0.4%	0.0%	0.0%	1.9%	0.8%	100.0%
2010										
0-19	48.8%	0.7%	0.7%	3.6%	0.3%	0.0%	0.0%	3.3%	46.1%	100.0%
20-64	65.0%	0.6%	1.5%	2.0%	0.6%	0.0%	0.1%	1.3%	30.9%	100.0%
65+	91.7%	0.3%	1.6%	0.5%	0.5%	0.0%	0.0%	0.1%	5.9%	100.0%
85+	94.1%	0.0%	0.8%	0.0%	0.0%	0.0%	0.0%	0.0%	5.1%	100.0%
E. Population Growth										
2000-10, Change										
0-19	-200	4	1	11	4	0	0	7	126	-58
20-64	-212	7	6	-9	2	-1	2	-12	305	97
65+	-171	3	11	-9	2	0	0	-11	40	-126
85+	-26	0	2	-6	-1	0	0	-5	10	-20
Total	-583	14	18	-7	8	-1	2	-16	471	-87
2000-10, % Change										
0-19	-25.3%	100.0%	12.5%	33.3%	N/A	N/A	N/A	21.2%	29.3%	-4.6%
20-64	-10.0%	58.3%	15.8%	-13.4%	12.5%	-50.0%	N/A	-24.5%	50.5%	3.4%
65+	-14.6%	N/A	183.3%	-60.0%	66.7%	N/A	N/A	-91.7%	160.0%	-10.3%
85+	-10.4%	N/A	N/A	-100.0%	-100.0%	N/A	N/A	-100.0%	500.0%	-7.8%
Total	-14.3%	87.5%	34.6%	-6.1%	42.1%	-50.0%	N/A	-17.0%	44.5%	-1.6%

Source: US Census 2010, 2000

	White, Non- Hispanic	Black, Non- Hispanic	Asian, Non- Hispanic	Other, Non- Hispanic	Detail for Other, Non-Hispanic				Hispanic or Latino	Total Population 2010
					American Indian & Alaska Native	Native Hawaiian & Pacific Islander	Some Other Race	Two or More Races		
F. Population by Library-Defined Age Groups, 2010										
0-5	137	3	0	18	3	0	0	15	167	325
6-10	127	2	3	8	1	0	0	7	144	284
11-13	107	1	4	8	0	0	0	8	75	195
14-18	196	2	2	10	0	0	0	10	145	355
19-32	365	1	4	22	8	1	1	12	367	759
33-45	426	8	16	17	3	0	0	14	309	776
46-64	1,145	10	24	19	7	0	1	11	258	1,456
65-84	781	3	15	6	5	0	0	1	53	858
85+	223	0	2	0	0	0	0	0	12	237
Total	3,507	30	70	108	27	1	2	78	1,530	5,245
G. Population by 5-Year Age Brackets, 2010										
0-4	116	3	0	15	2	0	0	13	146	280
5-9	112	2	1	10	2	0	0	8	139	264
10-14	187	1	8	11	0	0	0	11	131	338
15-19	174	2	0	8	0	0	0	8	140	324
20-24	129	0	2	6	1	1	0	4	135	272
25-29	119	1	0	12	6	0	1	5	146	278
30-34	135	1	3	7	1	0	0	6	106	252
35-39	149	7	7	5	0	0	0	5	109	277
40-44	191	0	6	7	3	0	0	4	131	335
45-49	251	5	10	5	1	0	0	4	102	373
50-54	318	2	7	6	4	0	0	2	96	429
55-59	322	2	6	8	1	0	1	6	51	389
60-64	300	1	3	2	1	0	0	1	33	339
65-69	264	1	4	3	2	0	0	1	16	288
70-74	200	1	4	1	1	0	0	0	14	220
75-79	153	1	2	1	1	0	0	0	15	172
80-84	164	0	5	1	1	0	0	0	8	178
85-89	140	0	0	0	0	0	0	0	7	147
90-94	58	0	2	0	0	0	0	0	5	65
95-99	23	0	0	0	0	0	0	0	0	23
100+	2	0	0	0	0	0	0	0	0	2
Total	3,507	30	70	108	27	1	2	78	1,530	5,245
H. Median Age, 2000-10										
	White, Non- Hispanic	Black, Hispanic Inclusive	Asian, Hispanic Inclusive		American Indian & Alaska Native, Hispanic Inclusive	Native Hawaiian & Pacific Islander, Hispanic Inclusive	Some Other Race, Hispanic Inclusive	Two or More Races, Hispanic Inclusive	Hispanic or Latino	Total Population
2000	49.0	31.5	37.5		40.5	27.0	26.5	22.7	25.7	43.2
2010	52.9	38.3	49.6		38.5	24.5	28.0	24.0	28.0	45.0

Source: US Census 2010, 2000

Note: In the American Community Survey and for Census variables other than population, Hispanic origin is not broken out for all races.

I. Income Distribution, 2005-09			J. Median Household Income by Race and Ethnicity, 2005-09 (\$2009)						
Range (ths)	Households	% of Total	White, NH	Black	Asian	Hispanic	Total	% of CA	California
<\$10	160	7.6%	\$77,019	#N/A	\$84,583	\$50,290	\$59,615	98.7%	\$60,392
\$10 to <\$25	104	4.9%							
\$25 to <\$50	455	21.5%							
\$50 to <\$75	496	23.5%							
\$75 to <\$100	183	8.7%							
\$100 to <\$150	365	17.3%							
\$150+	351	16.6%							
K. Household Type, 2000-10			2000	2000,%	2010	2010,%			
Total households			2,205	100.0%	2,173	100.0%			
Family Households			1,441	65.4%	1,385	63.7%			
Husband-wife w/children			529	24.0%	423	19.5%			
Female head, no husband, w/children			58	2.6%	95	4.4%			
Male head, no wife, w/children			27	1.2%	47	2.2%			
Without children			827	37.5%	820	37.7%			
Nonfamily households			764	34.6%	788	36.3%			
Living alone			670	30.4%	636	29.3%			
Other nonfamily			94	4.3%	152	7.0%	Source: US Census 2010, 2000		
L. Household Type by Race and Ethnicity, 2010			White, NH	Black	Asian	Hispanic	Total		
Total households			1,648	16	38	438	2,173		
Husband-wife family			48.7%	50.0%	42.1%	55.7%	49.7%		
Family with male head, no wife			4.2%	6.3%	5.3%	10.3%	5.6%		
Family with female head, no husband			7.8%	6.3%	10.5%	10.0%	8.4%		
Living alone			32.8%	25.0%	36.8%	14.8%	29.3%	Source: US	
Other nonfamily			6.4%	12.5%	5.3%	9.1%	7.0%	Census 2010	
M. Poverty, 2005-09									
Percentage of families and people whose income in the past 12 months is below the poverty level								California	
All families						1.2%	9.8%		
Families w/ related children under 18 years						2.7%	14.5%		
Families w/ female householder, no husband present						0.0%	24.2%		
Families w/ female householder, no husband present w/ related children under 18 years						0.0%	32.2%		
All people						5.9%	13.2%		
Under 18 years						3.4%	18.3%		
18 to 64 years						7.3%	11.9%		
65 years and over						4.2%	8.4%		
N. Educational Attainment, 2005-09									
			% at each level of educational attainment						
			White, NH	Black	Asian	Hispanic	Total		
Population 25 years and over			2,708	0	46	678	3,686		
Less than high school			4.3%	N/A	0.0%	30.1%	9.8%		
High school graduate (includes equivalency)			15.3%	N/A	17.4%	38.1%	21.7%		
Some college or associate's degree			32.7%	N/A	56.5%	29.1%	31.8%		
Bachelor's degree or higher			47.6%	N/A	26.1%	2.8%	36.7%		
O. Employment Status, 2010-11									
			2010	June 2011					
In civilian labor force			3,100	3,200					
Employed			3,000	3,100					
Unemployed, % of labor force			3.6%	3.4%	Source: CA Employment Development Department				
P. Occupation, 2005-09									
			Estimate		Percent				
Civilian employed population, 16 yrs & over			2,456		100.0%				
Management, professional, and related occupations			1,045		42.5%				
Service occupations			744		30.3%				
Sales and office occupations			412		16.8%				
Farming, fishing, and forestry occupations			0		0.0%				
Construction, extraction, maintenance, and repair occupations			116		4.7%				
Production, transportation, and material moving occupations			139		5.7%				
Q. Class of Worker, 2005-09									
			Estimate		Percent				
Civilian employed population, 16 yrs & over			2,456		100.0%				
Private, for profit, wage and salary employee			1,643		66.9%				
Private, not for profit, wage and salary employee			185		7.5%				
Private, for profit, wage and salary self-employed in own business			69		2.8%				
Government workers			314		12.8%				
Self-employed in own not incorporated business			245		10.0%				
Unpaid family workers in family business			0		0.0%				

Source: American Community Survey 2005-09, unless otherwise stated

ProfileTemplate 9-8-11.xlsr 9/12/2011 11:36

Note: In the American Community Survey and for US Census variables other than population, Hispanic origin is not broken out for all races. White, NH represents White, Non-Hispanic. Black and Asian are Hispanic inclusive.