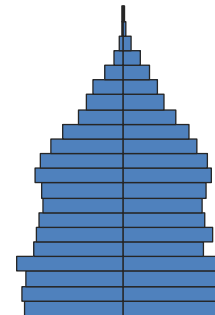


Highlights



Population Growth: The population of Sutter County increased by 20% over the past decade to 95,000; this is twice the statewide growth rate of 10%. The greatest increases occurred among the Hispanic and Asian populations, which grew by 10,000 (56%) and 5,000 (53%) respectively. The young population increased by 15%, while statewide growth for the same age group was only 2%.



Population by Age

Diversity: The population mix in Sutter County has shifted over the past decade, with the white, non-Hispanic share of population declining from 60% to 50%, and the Hispanic share increasing from 22% to 29%.

Age Structure: The median age of 35 is the same as that for California as a whole. Compared with California as a whole, Sutter County has a relatively small working-age population. Fifty-seven percent of the county’s population is working age, compared with 61% statewide. Conversely, 31% is under age 20, compared with 28% statewide.

Education: Educational attainment levels are somewhat lower in Sutter County than in California as a whole. Only 18% of adults have a Bachelor’s degree or higher, compared with 30% statewide. High school completion rates are the same as statewide levels.

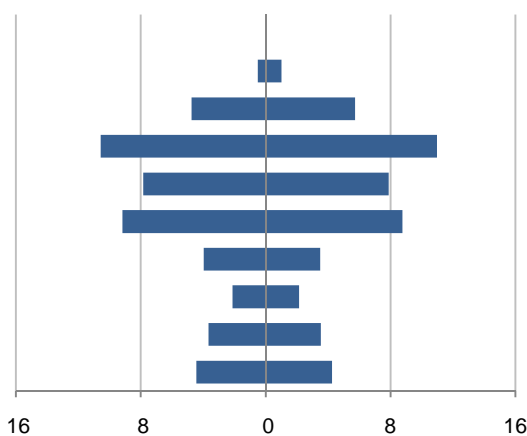
Income: Sutter County’s median household income is \$52,000—86% of the statewide median of \$60,000. Median household income for Asians is particularly low compared with Asians statewide: \$46,000 annually, compared with \$74,000 in California as whole.

This demographic profile is part of a series of library jurisdiction profiles prepared for the California State Library by the Stanford Center on Longevity. The project, "Understanding California's Shifting Demographics," was supported in whole by the U.S. Institute of Museum and Library Services under the provisions of the Library Services and Technology Act, administered in California by the State Librarian. The opinions expressed herein do not necessarily reflect the position or policy of the U.S. Institute of Museum and Library Services or the California State Library, and no official endorsement by the U.S. Institute of Museum and Library Services or the California State Library should be inferred.

Key Indicators			
		2000	2010
Population Growth			
	Total population	78,930	94,737
	10-year growth	22.5%	20.0%
Diversity			
	% Hispanic	22.2%	28.8%
	% Asian, non-Hispanic	11.1%	14.2%
	% White, non-Hispanic	60.2%	50.4%
	% Black, non-Hispanic	1.8%	1.8%
Aging			
	% 65+	12.4%	12.7%
	Median age	34.1	34.5
Households			
	% Married couple with children	29.3%	25.5%
	% Living alone	21.1%	21.0%

1. Population by Library-Defined Age Group, 2010

In thousands; males on left, females on right

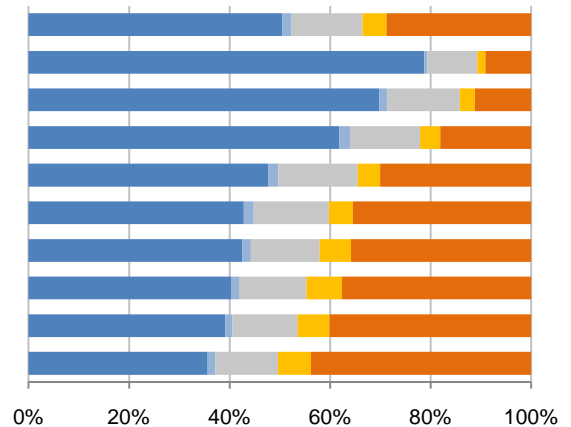


2. Race and Ethnicity by Library-Defined Age Group, 2010

White, NH Black, NH Asian, NH Other, NH Hispanic

Age group

- Total
- 85+, Oldest
- 65 to 84, Older adults
- 46 to 64, Midlife
- 33 to 45, Adult
- 19 to 32, Young
- 14 to 18, Teens
- 11 to 13, Tweens
- 6 to 10, School age
- 0 to 5, Infants/toddlers

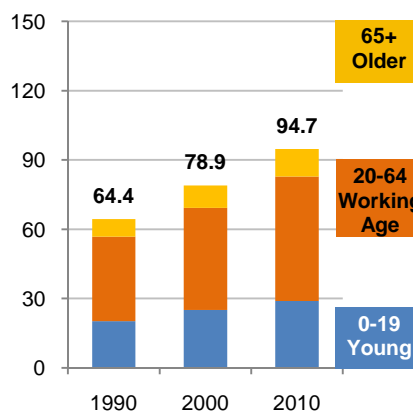


3. Population Growth by Library-Defined Age Group, 2000-10

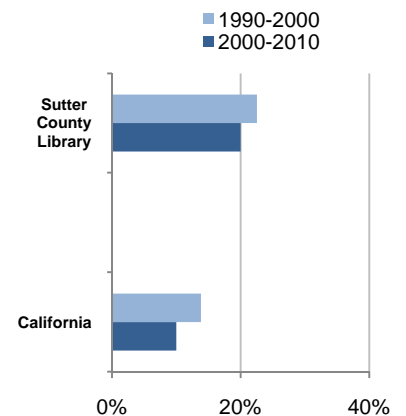
	2010	Change	% Change
Total	94,737	15,807	20.0%
85+	1,521	351	30.0%
65 to 84	10,469	1,884	21.9%
46 to 64	21,522	5,845	37.3%
33 to 45	15,720	527	3.5%
19 to 32	17,933	3,618	25.3%
14 to 18	7,449	1,125	17.8%
11 to 13	4,259	295	7.4%
6 to 10	7,193	460	6.8%
0 to 5	8,671	1,702	24.4%

4. Population Total, 1990-2010

In thousands



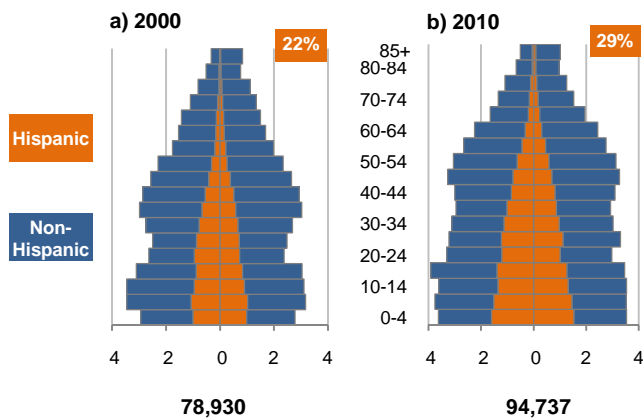
5. 10-Year Population Change



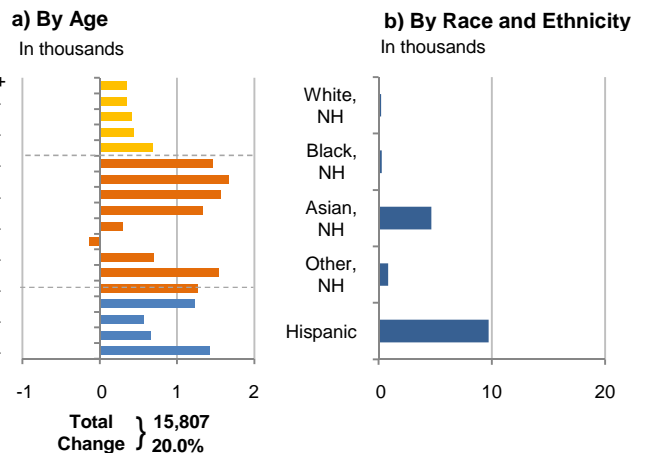
Source: US Census 2010, 2000, or 1990

6. Population by 5-Year Age Brackets

In thousands; males on left, females on right

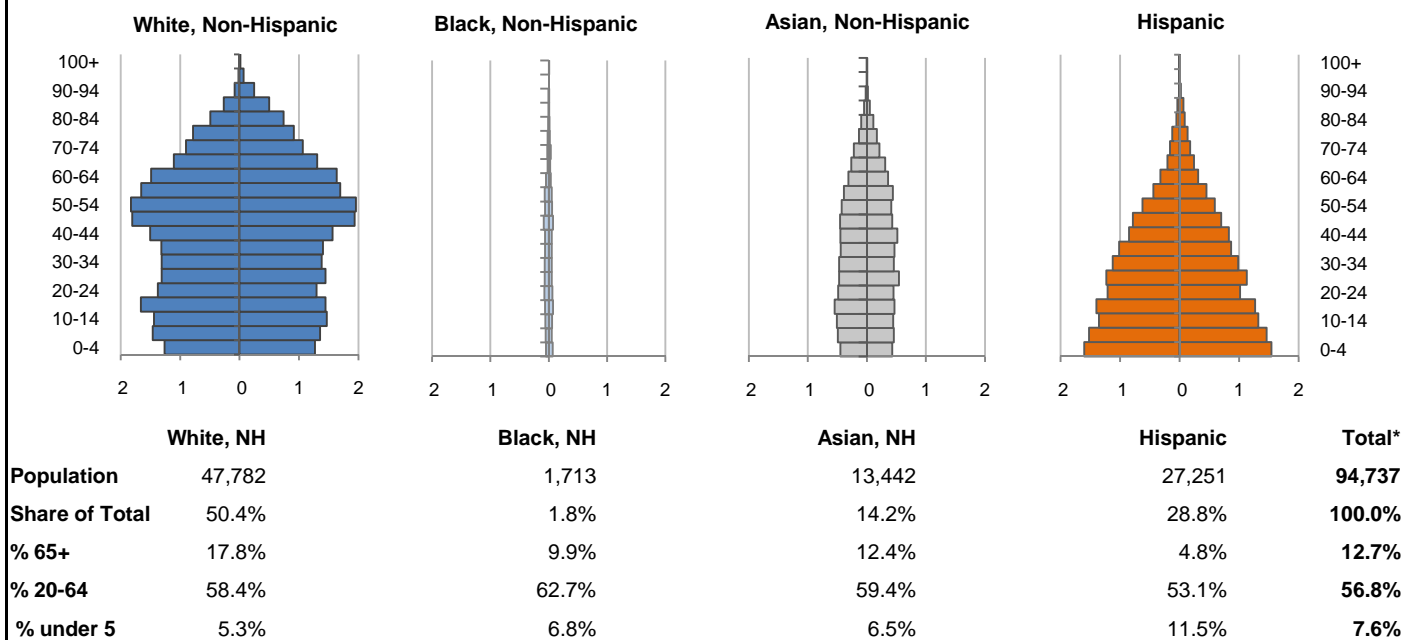


7. 10-Year Change in Population, 2000-10

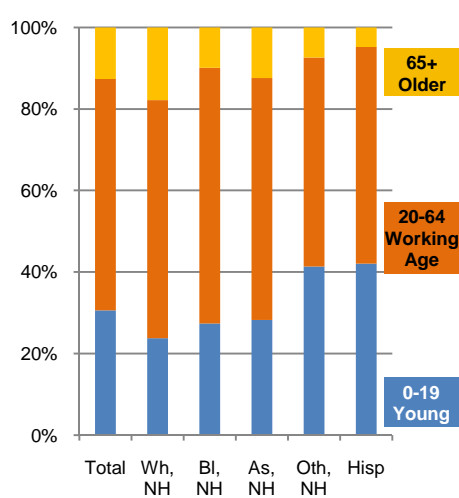


8. Population by Age, Race, and Ethnicity, 2010

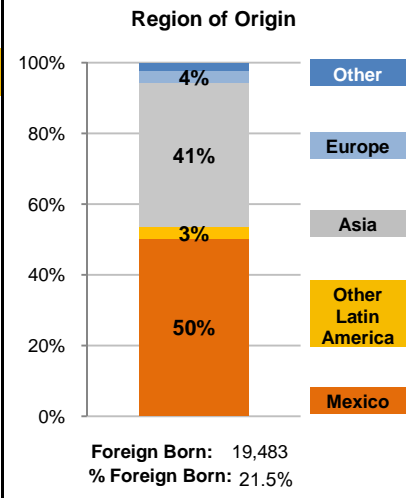
In thousands; males on left, females on right



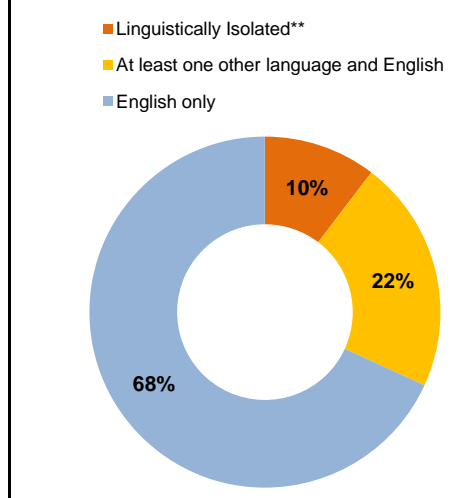
9. Age Mix by Race and Ethnicity, 2010



10. Foreign Born, 2005-09



11. Household Language, 2005-09

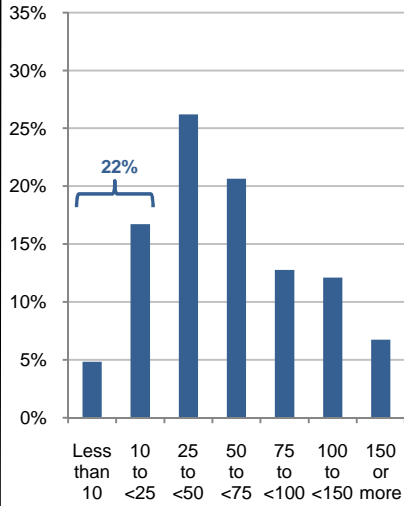


Wh=White; Bl=Black; As=Asian; Oth=Other Race or Two or More Races; Hisp=Hispanic; NH=Non-Hispanic; ACS=American Community Survey 2005-09
 *See pages 5-6 for detail on Other, Non-Hispanic
 **Linguistically Isolated = No one in the household age 14 and over speaks English at least "very well"

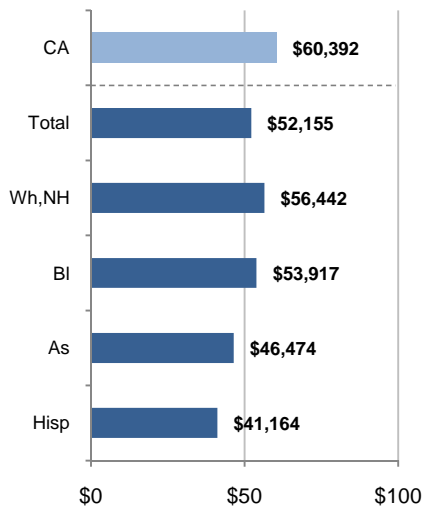
12. Household Income, 2005-09

In thousands of \$ (2009)

a) Income Distribution



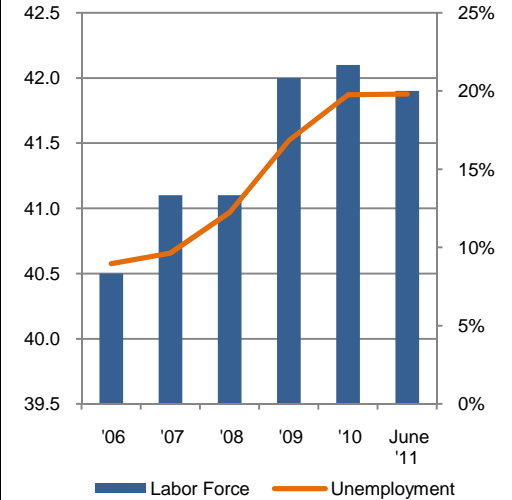
b) Median Household Income by Race and Ethnicity*



13. Labor Force and Unemployment, 2006-11

Labor Force
In thousands

Unemployment Rate

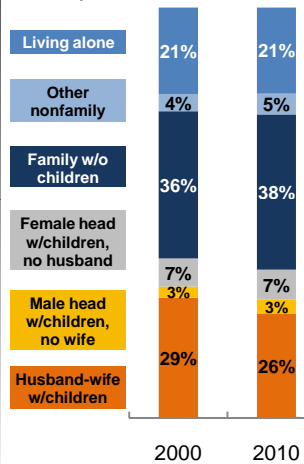


Source: CA Employment Development Department

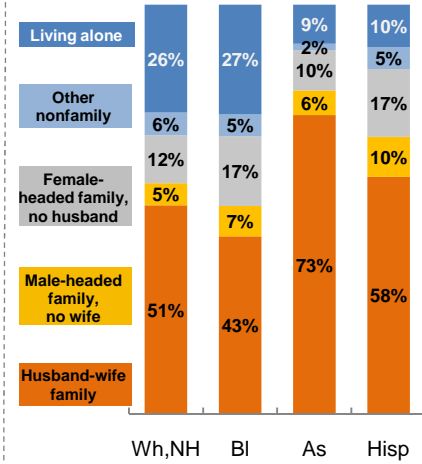
14. Household Type, 2010

% of all households

a) Total, 2000-10

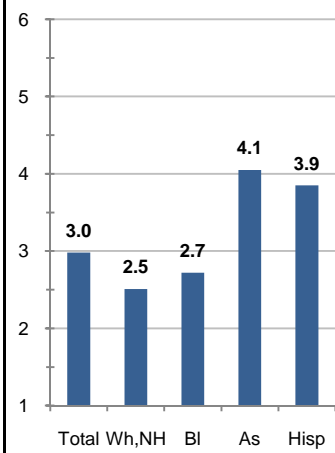


b) By Race and Ethnicity,* 2010

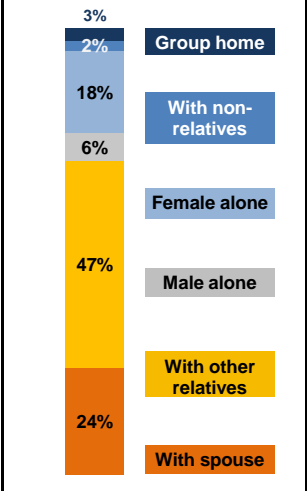


15. Average Household Size, 2010

By Race and Ethnicity*



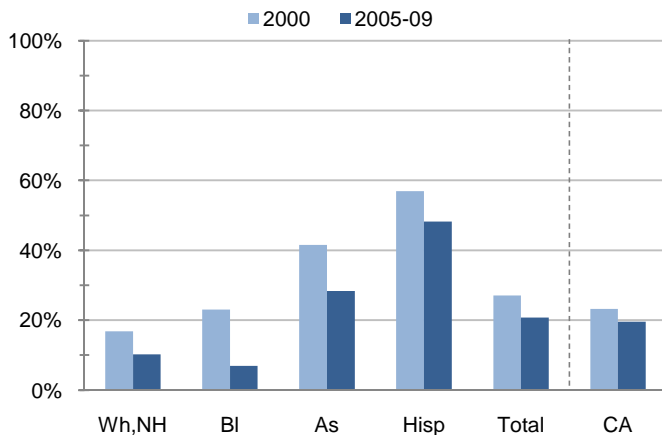
16. Living Arrangements Age 65+, 2005-09



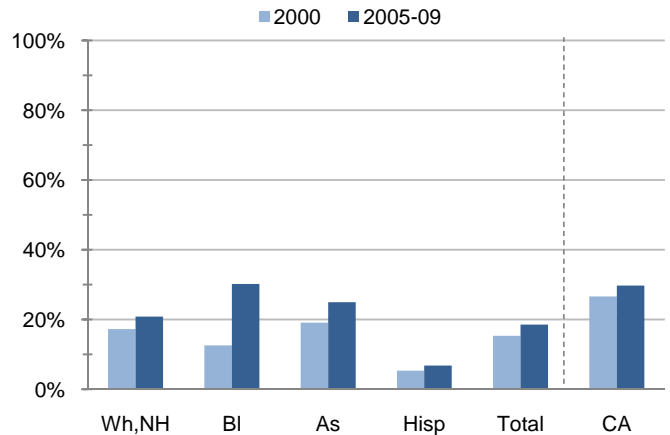
Source: ACS 2005-09

17. Educational Attainment for the Population Age 25 and Over by Race and Ethnicity*

a) % of Adults Who Did Not Complete High School



b) % of Adults Who Attained a BA or Higher



Source: Census 2000, ACS 2005-09

*Wh,NH=White, Non-Hispanic; Bl=Black, Hispanic Inclusive; As=Asian, Hispanic Inclusive; Hisp=Hispanic (Includes all races); CA=California Total

Note: In the American Community Survey and for Census variables other than population, Hispanic origin is not broken out for all races.

	White, Non- Hispanic	Black, Non- Hispanic	Asian, Non- Hispanic	Other, Non- Hispanic	Detail for Other, Non-Hispanic				Hispanic or Latino	Total Population
					American Indian & Alaska Native	Native Hawaiian & Pacific Islander	Some Other Race	Two or More Races		
A. Total Population										
2000 Total	47,532	1,418	8,771	3,680	940	142	190	2,408	17,529	78,930
2000 % of Total	60.2%	1.8%	11.1%	4.7%	1.2%	0.2%	0.2%	3.1%	22.2%	100.0%
2010 Total	47,782	1,713	13,442	4,549	925	256	190	3,178	27,251	94,737
2010 % of Total	50.4%	1.8%	14.2%	4.8%	1.0%	0.3%	0.2%	3.4%	28.8%	100.0%
B. Population in Major Age Groups by Race and Ethnicity										
2000										
0-19	12,687	435	2,806	1,492	320	49	72	1,051	7,664	25,084
20-64	26,968	887	5,118	1,955	559	84	112	1,200	9,163	44,091
65+	7,877	96	847	233	61	9	6	157	702	9,755
85+	1,029	10	56	28	9	1	2	16	47	1,170
2010										
0-19	11,363	469	3,793	1,880	283	65	52	1,480	11,463	28,968
20-64	27,914	1,074	7,984	2,332	562	172	118	1,480	14,475	53,779
65+	8,505	170	1,665	337	80	19	20	218	1,313	11,990
85+	1,197	9	152	24	6	3	3	12	139	1,521
C. Age Mix for Each Racial and Ethnic Group										
2000										
0-19	26.7%	30.7%	32.0%	40.5%	34.0%	34.5%	37.9%	43.6%	43.7%	31.8%
20-64	56.7%	62.6%	58.4%	53.1%	59.5%	59.2%	58.9%	49.8%	52.3%	55.9%
65+	16.6%	6.8%	9.7%	6.3%	6.5%	6.3%	3.2%	6.5%	4.0%	12.4%
85+	2.2%	0.7%	0.6%	0.8%	1.0%	0.7%	1.1%	0.7%	0.3%	1.5%
2010										
0-19	23.8%	27.4%	28.2%	41.3%	30.6%	25.4%	27.4%	46.6%	42.1%	30.6%
20-64	58.4%	62.7%	59.4%	51.3%	60.8%	67.2%	62.1%	46.6%	53.1%	56.8%
65+	17.8%	9.9%	12.4%	7.4%	8.6%	7.4%	10.5%	6.9%	4.8%	12.7%
85+	2.5%	0.5%	1.1%	0.5%	0.6%	1.2%	1.6%	0.4%	0.5%	1.6%
D. Racial and Ethnic Mix for Each Age Group										
2000										
0-19	50.6%	1.7%	11.2%	5.9%	1.3%	0.2%	0.3%	4.2%	30.6%	100.0%
20-64	61.2%	2.0%	11.6%	4.4%	1.3%	0.2%	0.3%	2.7%	20.8%	100.0%
65+	80.7%	1.0%	8.7%	2.4%	0.6%	0.1%	0.1%	1.6%	7.2%	100.0%
85+	87.9%	0.9%	4.8%	2.4%	0.8%	0.1%	0.2%	1.4%	4.0%	100.0%
2010										
0-19	39.2%	1.6%	13.1%	6.5%	1.0%	0.2%	0.2%	5.1%	39.6%	100.0%
20-64	51.9%	2.0%	14.8%	4.3%	1.0%	0.3%	0.2%	2.8%	26.9%	100.0%
65+	70.9%	1.4%	13.9%	2.8%	0.7%	0.2%	0.2%	1.8%	11.0%	100.0%
85+	78.7%	0.6%	10.0%	1.6%	0.4%	0.2%	0.2%	0.8%	9.1%	100.0%
E. Population Growth										
2000-10, Change										
0-19	-1,324	34	987	388	-37	16	-20	429	3,799	3,884
20-64	946	187	2,866	377	3	88	6	280	5,312	9,688
65+	628	74	818	104	19	10	14	61	611	2,235
85+	168	-1	96	-4	-3	2	1	-4	92	351
Total	250	295	4,671	869	-15	114	0	770	9,722	15,807
2000-10, % Change										
0-19	-10.4%	7.8%	35.2%	26.0%	-11.6%	32.7%	-27.8%	40.8%	49.6%	15.5%
20-64	3.5%	21.1%	56.0%	19.3%	0.5%	104.8%	5.4%	23.3%	58.0%	22.0%
65+	8.0%	77.1%	96.6%	44.6%	31.1%	111.1%	233.3%	38.9%	87.0%	22.9%
85+	16.3%	-10.0%	171.4%	-14.3%	-33.3%	200.0%	50.0%	-25.0%	195.7%	30.0%
Total	0.5%	20.8%	53.3%	23.6%	-1.6%	80.3%	0.0%	32.0%	55.5%	20.0%

Source: US Census 2010, 2000

	White, Non- Hispanic	Black, Non- Hispanic	Asian, Non- Hispanic	Other, Non- Hispanic	Detail for Other, Non-Hispanic				Hispanic or Latino	Total Population 2010
					American Indian & Alaska Native	Native Hawaiian & Pacific Islander	Some Other Race	Two or More Races		
F. Population by Library-Defined Age Groups, 2010										
0-5	3,089	135	1,078	569	68	12	18	471	3,800	8,671
6-10	2,814	101	933	458	76	14	12	356	2,887	7,193
11-13	1,714	68	572	302	38	14	9	241	1,603	4,259
14-18	3,164	132	1,017	466	86	18	11	351	2,670	7,449
19-32	7,674	354	2,691	849	159	53	40	597	6,365	17,933
33-45	7,504	309	2,481	704	187	52	25	440	4,722	15,720
46-64	13,318	444	3,005	864	231	74	55	504	3,891	21,522
65-84	7,308	161	1,513	313	74	16	17	206	1,174	10,469
85+	1,197	9	152	24	6	3	3	12	139	1,521
Total	47,782	1,713	13,442	4,549	925	256	190	3,178	27,251	94,737
G. Population by 5-Year Age Brackets, 2010										
0-4	2,533	116	876	489	57	9	17	406	3,139	7,153
5-9	2,814	106	951	438	72	13	9	344	2,983	7,292
10-14	2,909	111	952	497	72	20	17	388	2,677	7,146
15-19	3,107	136	1,014	456	82	23	9	342	2,664	7,377
20-24	2,672	136	940	311	49	23	13	226	2,227	6,286
25-29	2,755	122	1,018	276	54	20	17	185	2,357	6,528
30-34	2,692	116	927	294	67	11	14	202	2,109	6,138
35-39	2,720	113	910	258	66	17	12	163	1,878	5,879
40-44	3,073	115	967	271	86	18	7	160	1,675	6,101
45-49	3,743	154	885	281	69	27	9	176	1,485	6,548
50-54	3,786	122	839	229	65	10	20	134	1,218	6,194
55-59	3,350	116	830	222	56	31	16	119	894	5,412
60-64	3,123	80	668	190	50	15	10	115	632	4,693
65-69	2,413	46	570	137	34	10	4	89	446	3,612
70-74	1,967	60	433	84	19	3	6	56	334	2,878
75-79	1,696	37	303	56	12	1	6	37	254	2,346
80-84	1,232	18	207	36	9	2	1	24	140	1,633
85-89	766	5	98	15	3	3	0	9	98	982
90-94	332	3	39	8	2	0	3	3	33	415
95-99	84	0	13	1	1	0	0	0	6	104
100+	15	1	2	0	0	0	0	0	2	20
Total	47,782	1,713	13,442	4,549	925	256	190	3,178	27,251	94,737
H. Median Age, 2000-10										
	White, Non- Hispanic	Black, Hispanic Inclusive	Asian, Hispanic Inclusive		American Indian & Alaska Native, Hispanic Inclusive	Native Hawaiian & Pacific Islander, Hispanic Inclusive	Some Other Race, Hispanic Inclusive	Two or More Races, Hispanic Inclusive	Hispanic or Latino	Total Population
2000	39.6	31.3	32.1		31.6	30.6	23.6	21.7	23.3	34.1
2010	42.8	33.2	35.1		33.4	36.3	25.5	19.3	24.9	34.5

Source: US Census 2010, 2000

Note: In the American Community Survey and for Census variables other than population, Hispanic origin is not broken out for all races.

I. Income Distribution, 2005-09			J. Median Household Income by Race and Ethnicity, 2005-09 (\$2009)							
Range (ths)	Households	% of Total	White, NH	Black	Asian	Hispanic	Total	% of CA	California	
<\$10	1,483	4.8%	\$56,442	\$53,917	\$46,474	\$41,164	\$52,155	86.4%	\$60,392	
\$10 to <\$25	5,137	16.7%								
\$25 to <\$50	8,056	26.2%								
\$50 to <\$75	6,351	20.7%								
\$75 to <\$100	3,928	12.8%								
\$100 to <\$150	3,723	12.1%								
\$150+	2,069	6.7%								
K. Household Type, 2000-10			2000	2000,%	2010	2010,%				
Total households			27,098	100.0%	31,437	100.0%				
Family Households			20,251	74.7%	23,243	73.9%				
Husband-wife w/children			7,927	29.3%	8,017	25.5%				
Female head, no husband, w/children			1,860	6.9%	2,283	7.3%				
Male head, no wife, w/children			748	2.8%	1,052	3.3%				
Without children			9,716	35.9%	11,891	37.8%				
Nonfamily households			6,847	25.3%	8,194	26.1%				
Living alone			5,712	21.1%	6,602	21.0%				
Other nonfamily			1,135	4.2%	1,592	5.1%	Source: US Census 2010, 2000			
L. Household Type by Race and Ethnicity, 2010			White, NH	Black	Asian	Hispanic	Total			
Total households			19,534	710	3,336	6,674	31,437			
Husband-wife family			51.0%	43.4%	73.0%	57.9%	54.6%			
Family with male head, no wife			5.4%	7.5%	6.1%	9.8%	6.5%			
Family with female head, no husband			11.8%	17.0%	9.8%	16.5%	12.8%			
Living alone			26.3%	26.8%	9.5%	10.4%	21.0%	Source: US		
Other nonfamily			5.5%	5.4%	1.6%	5.3%	5.1%	Census 2010		
M. Poverty, 2005-09			Percentage of families and people whose income in the past 12 months is below the poverty level						California	
All families									9.4%	9.8%
Families w/ related children under 18 years									14.5%	14.5%
Families w/ female householder, no husband present									23.9%	24.2%
Families w/ female householder, no husband present w/ related children under 18 years									33.0%	32.2%
All people									12.8%	13.2%
Under 18 years									17.4%	18.3%
18 to 64 years									11.6%	11.9%
65 years and over									8.3%	8.4%
N. Educational Attainment, 2005-09			% at each level of educational attainment							
			White, NH	Black	Asian	Hispanic	Total			
Population 25 years and over			33,961	1,162	7,412	11,971	56,627			
Less than high school			10.2%	6.9%	28.3%	48.2%	20.8%			
High school graduate (includes equivalency)			26.0%	16.6%	25.1%	23.9%	25.3%			
Some college or associate's degree			42.9%	46.3%	21.7%	21.0%	35.4%			
Bachelor's degree or higher			20.8%	30.2%	24.9%	6.8%	18.5%			
O. Employment Status, 2010-11			2010	June 2011						
In civilian labor force			42,100	41,900						
Employed			33,800	33,600						
Unemployed, % of labor force			19.8%	19.8%	Source: CA Employment Development Department					
P. Occupation, 2005-09			Estimate		Percent					
Civilian employed population, 16 yrs & over			37,853		100.0%					
Management, professional, and related occupations			10,954		28.9%					
Service occupations			6,461		17.1%					
Sales and office occupations			9,312		24.6%					
Farming, fishing, and forestry occupations			1,728		4.6%					
Construction, extraction, maintenance, and repair occupations			4,437		11.7%					
Production, transportation, and material moving occupations			4,961		13.1%					
Q. Class of Worker, 2005-09			Estimate		Percent					
Civilian employed population, 16 yrs & over			37,853		100.0%					
Private, for profit, wage and salary employee			24,153		63.8%					
Private, not for profit, wage and salary employee			2,462		6.5%					
Private, for profit, wage and salary self-employed in own business			835		2.2%					
Government workers			6,758		17.9%					
Self-employed in own not incorporated business			3,363		8.9%					
Unpaid family workers in family business			282		0.7%					

Source: American Community Survey 2005-09, unless otherwise stated

ProfileTemplate 9-8-11.xlsr 9/9/2011 11:05

Note: In the American Community Survey and for US Census variables other than population, Hispanic origin is not broken out for all races. White, NH represents White, Non-Hispanic. Black and Asian are Hispanic inclusive.