

Highlights



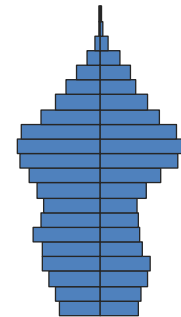
Population Growth: The population of Tuolumne County increased slightly, by 2%, between 2000 and 2010 and now stands at 55,000. This growth was significantly slower than the statewide pace (10%). The number of young people declined by 2,000 (-13%) over the past decade. Meanwhile, the working-age population increased by only 4%, compared with a 13% increase statewide.

Diversity: Tuolumne County remains predominantly white, non-Hispanic at 82% of total. However, the share of white, non-Hispanics has declined slightly from 85% in 2000. Conversely, the Hispanic share of the population increased in the past ten years, from 8% to 11% of the total.

Age Structure: The population of Tuolumne County is relatively old, with a median age of 47, compared with 35 for the state. Twenty percent of the county’s population is age 65+, almost double the 11% statewide share.

Households: The traditional family—a married couple with children—is less common in Tuolumne County than in California overall. Only 14% of households consist of traditional families compared with 23% statewide. Further, 28% of households countywide are single-person, compared with 23% in California as a whole.

Income: Household income in Tuolumne County is relatively low compared with income in California overall. Median household income in the county is \$48,000, compared with \$60,000 statewide.



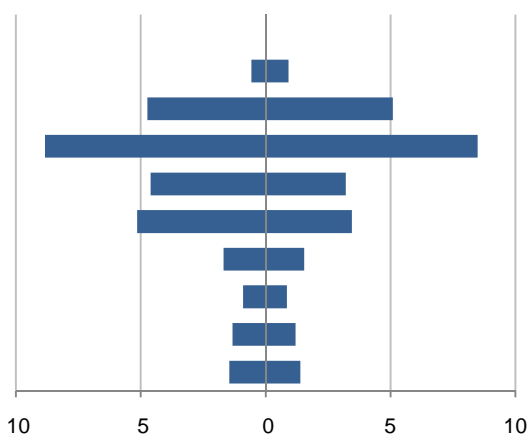
Population by Age

This demographic profile is part of a series of library jurisdiction profiles prepared for the California State Library by the Stanford Center on Longevity. The project, "Understanding California's Shifting Demographics," was supported in whole by the U.S. Institute of Museum and Library Services under the provisions of the Library Services and Technology Act, administered in California by the State Librarian. The opinions expressed herein do not necessarily reflect the position or policy of the U.S. Institute of Museum and Library Services or the California State Library, and no official endorsement by the U.S. Institute of Museum and Library Services or the California State Library should be inferred.

| Key Indicators | | | |
|--------------------------|--------------------------------|--------|--------|
| | | 2000 | 2010 |
| Population Growth | | | |
| | Total population | 54,501 | 55,365 |
| | 10-year growth | 12.5% | 1.6% |
| Diversity | | | |
| | % Hispanic | 8.2% | 10.7% |
| | % Asian, non-Hispanic | 0.7% | 1.0% |
| | % White, non-Hispanic | 85.1% | 81.9% |
| | % Black, non-Hispanic | 2.1% | 2.0% |
| Aging | | | |
| | % 65+ | 18.5% | 20.4% |
| | Median age | 42.9 | 47.3 |
| Households | | | |
| | % Married couple with children | 18.7% | 13.5% |
| | % Living alone | 26.0% | 28.3% |

1. Population by Library-Defined Age Group, 2010

In thousands; males on left, females on right

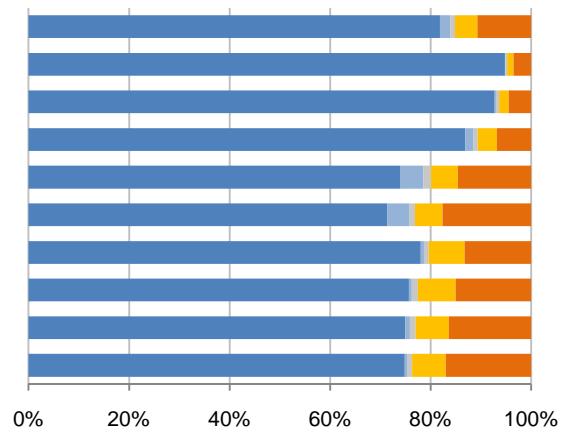


2. Race and Ethnicity by Library-Defined Age Group, 2010

White, NH Black, NH Asian, NH Other, NH Hispanic

Age group

- Total
- 85+, Oldest
- 65 to 84, Older adults
- 46 to 64, Midlife
- 33 to 45, Adult
- 19 to 32, Young
- 14 to 18, Teens
- 11 to 13, Tweens
- 6 to 10, School age
- 0 to 5, Infants/toddlers

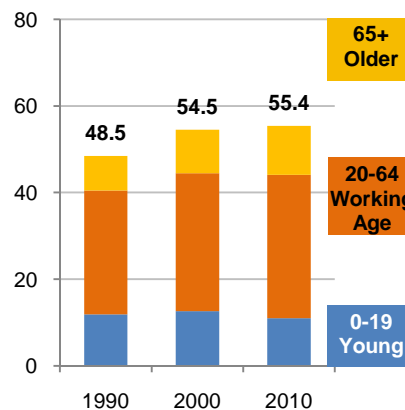


3. Population Growth by Library-Defined Age Group, 2000-10

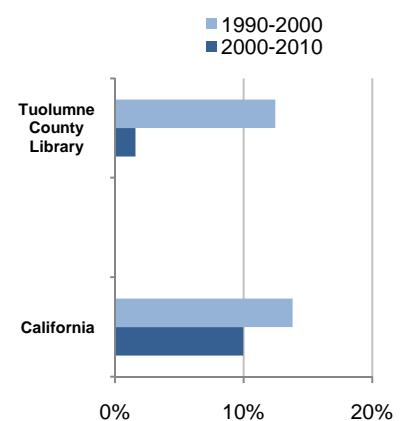
| Age Group | 2010 | Change | % Change |
|-----------|--------|--------|----------|
| Total | 55,365 | 864 | 1.6% |
| 85+ | 1,475 | 508 | 52.5% |
| 65 to 84 | 9,819 | 719 | 7.9% |
| 46 to 64 | 17,315 | 3,046 | 21.3% |
| 33 to 45 | 7,810 | -2,541 | -24.5% |
| 19 to 32 | 8,600 | 760 | 9.7% |
| 14 to 18 | 3,221 | -494 | -13.3% |
| 11 to 13 | 1,749 | -367 | -17.3% |
| 6 to 10 | 2,524 | -648 | -20.4% |
| 0 to 5 | 2,852 | -119 | -4.0% |

4. Population Total, 1990-2010

In thousands



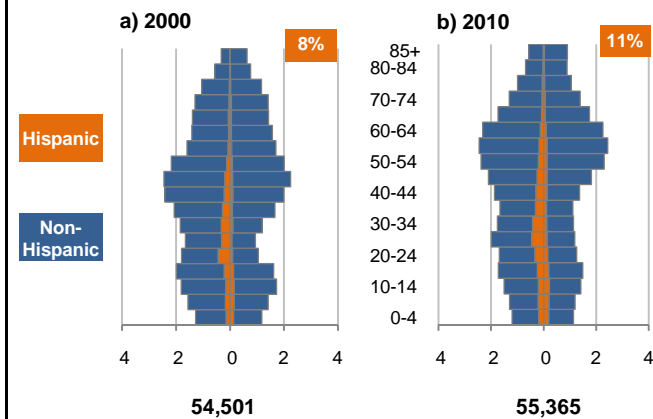
5. 10-Year Population Change



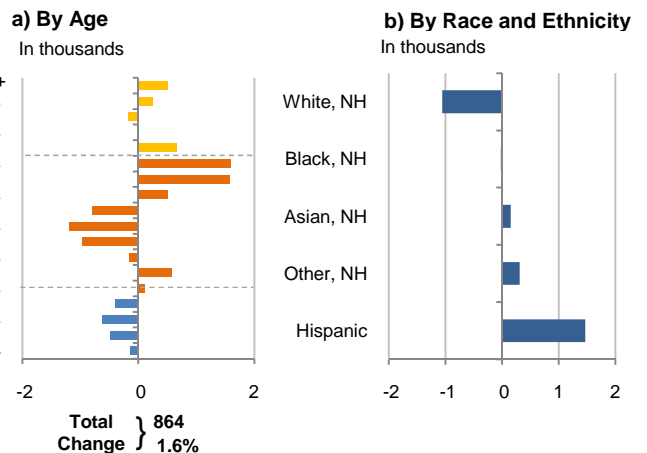
Source: US Census 2010, 2000, or 1990

6. Population by 5-Year Age Brackets

In thousands; males on left, females on right

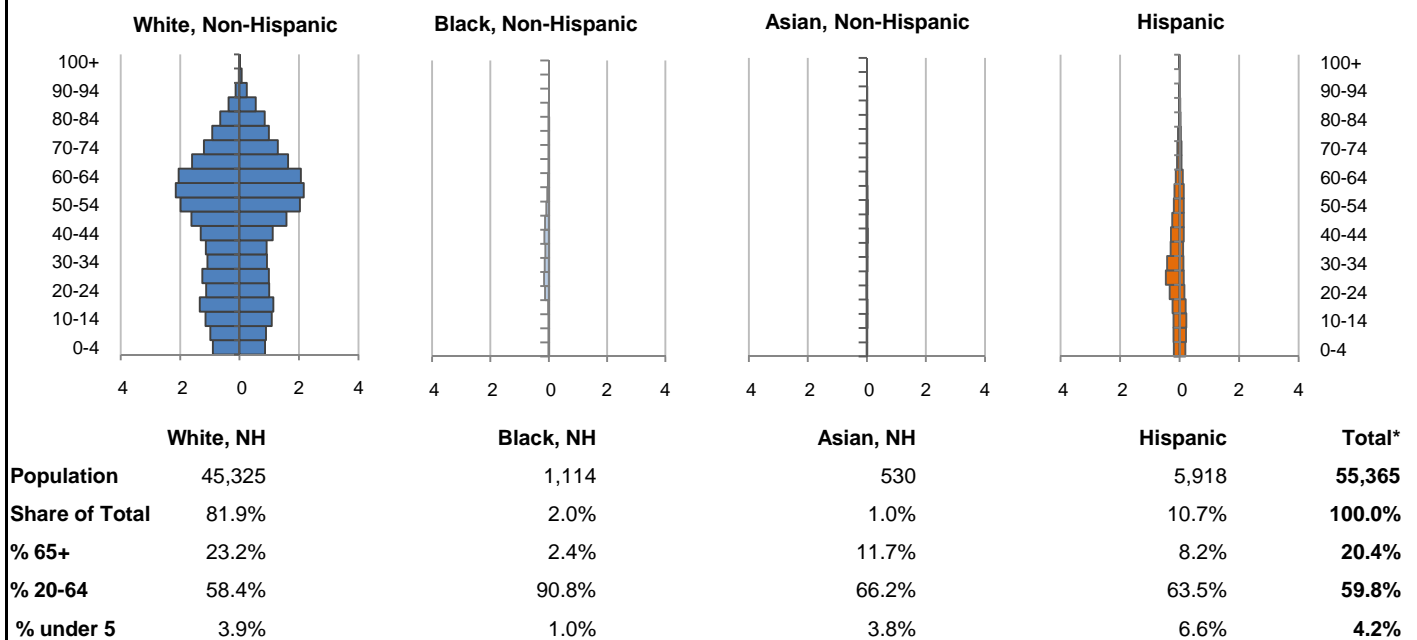


7. 10-Year Change in Population, 2000-10

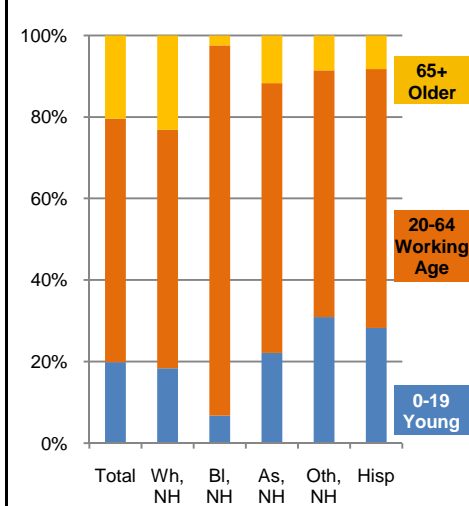


8. Population by Age, Race, and Ethnicity, 2010

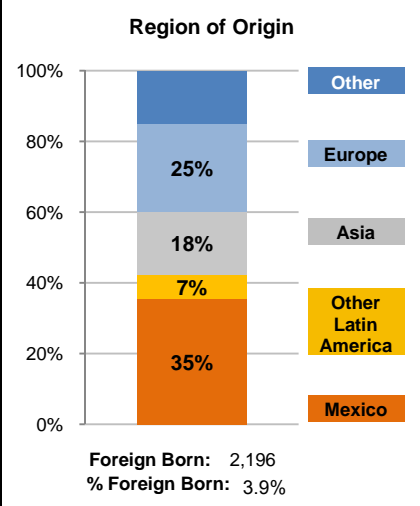
In thousands; males on left, females on right



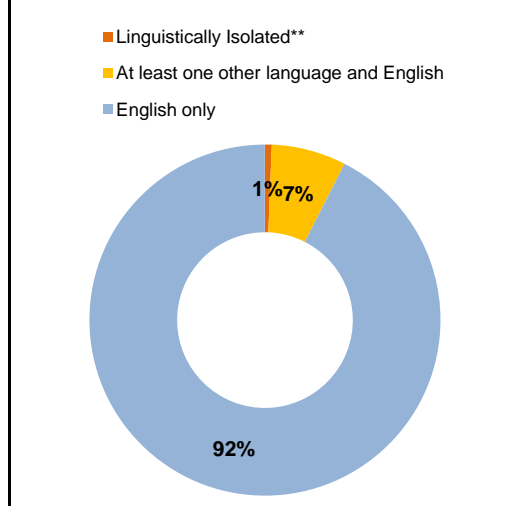
9. Age Mix by Race and Ethnicity, 2010



10. Foreign Born, 2005-09



11. Household Language, 2005-09



Wh=White; BI=Black; As=Asian; Oth=Other Race or Two or More Races; Hisp=Hispanic; NH=Non-Hispanic; ACS=American Community Survey 2005-09

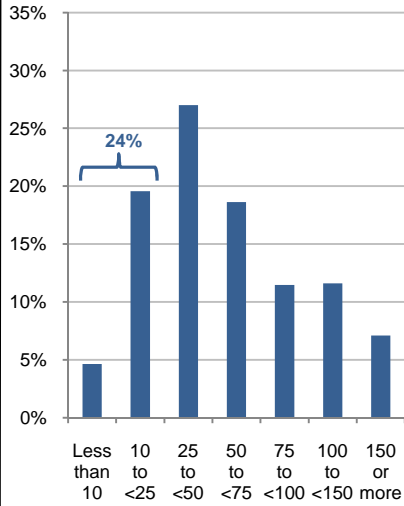
*See pages 5-6 for detail on Other, Non-Hispanic

**Linguistically Isolated = No one in the household age 14 and over speaks English at least "very well"

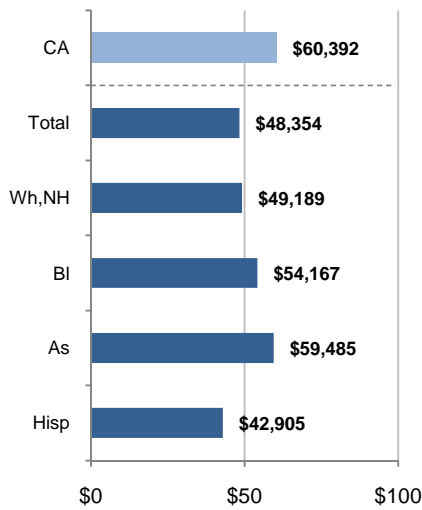
12. Household Income, 2005-09

In thousands of \$ (2009)

a) Income Distribution



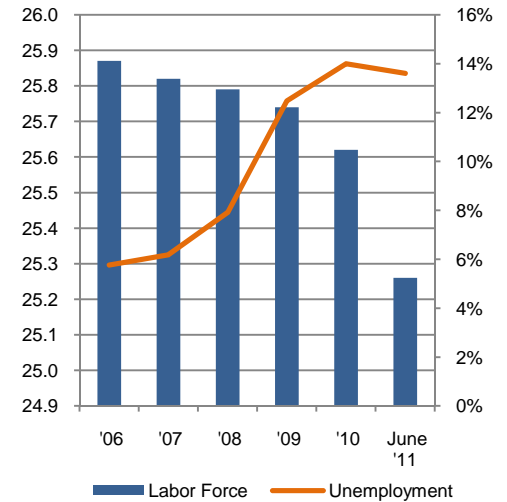
b) Median Household Income by Race and Ethnicity*



13. Labor Force and Unemployment, 2006-11

Labor Force
In thousands

Unemployment Rate

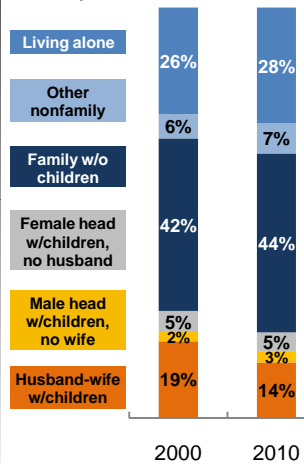


Source: CA Employment Development Department

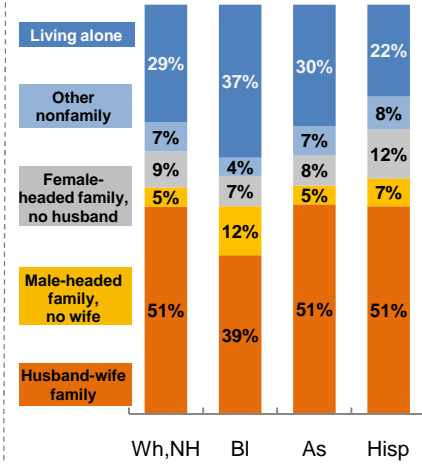
14. Household Type, 2010

% of all households

a) Total, 2000-10

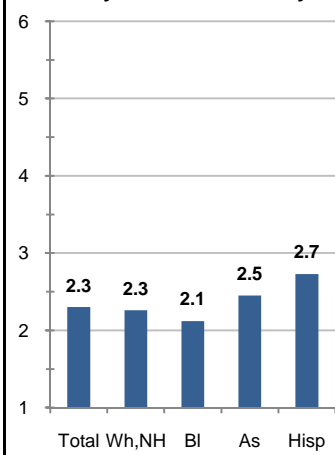


b) By Race and Ethnicity,* 2010

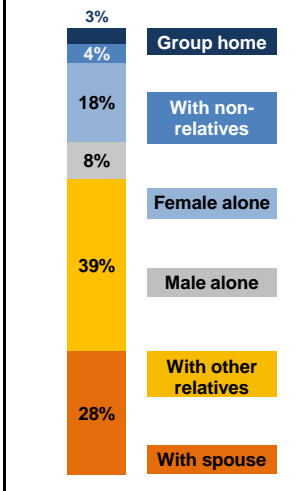


15. Average Household Size, 2010

By Race and Ethnicity*



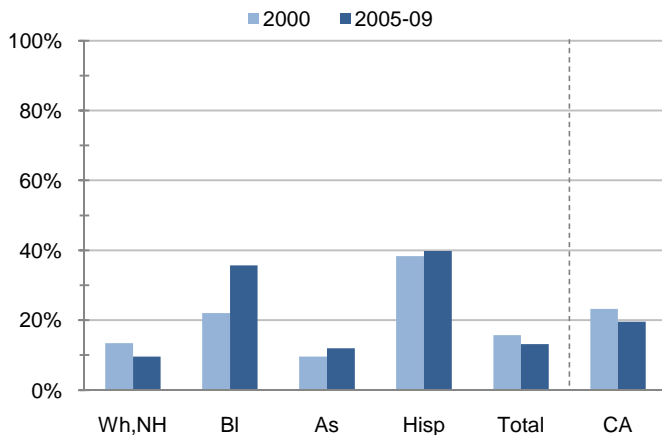
16. Living Arrangements Age 65+, 2005-09



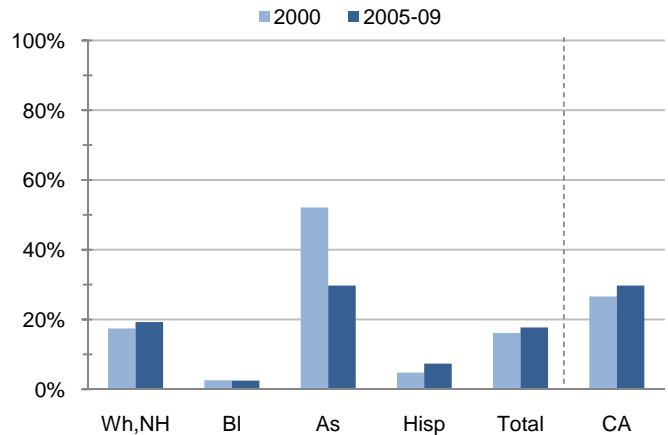
Source: ACS 2005-09

17. Educational Attainment for the Population Age 25 and Over by Race and Ethnicity*

a) % of Adults Who Did Not Complete High School



b) % of Adults Who Attained a BA or Higher



Source: Census 2000, ACS 2005-09

*Wh,NH=White,Non-Hispanic; BI=Black,Hispanic Inclusive; As=Asian,Hispanic Inclusive; Hisp=Hispanic(Includes all races); CA=California Total

Note: In the American Community Survey and for Census variables other than population, Hispanic origin is not broken out for all races.

| | White, Non- Hispanic | Black, Non- Hispanic | Asian, Non- Hispanic | Other, Non- Hispanic | Detail for Other, Non-Hispanic | | | | Hispanic or Latino | Total Population |
|--|----------------------------|----------------------------|----------------------------|----------------------------|--|---|-----------------------|----------------------|-----------------------|---------------------|
| | | | | | American Indian & Alaska Native | Native Hawaiian & Pacific Islander | Some Other Race | Two or More Races | | |
| A. Total Population | | | | | | | | | | |
| 2000 Total | 46,377 | 1,135 | 377 | 2,167 | 864 | 81 | 47 | 1,175 | 4,445 | 54,501 |
| 2000 % of Total | 85.1% | 2.1% | 0.7% | 4.0% | 1.6% | 0.1% | 0.1% | 2.2% | 8.2% | 100.0% |
| 2010 Total | 45,325 | 1,114 | 530 | 2,478 | 830 | 62 | 230 | 1,356 | 5,918 | 55,365 |
| 2010 % of Total | 81.9% | 2.0% | 1.0% | 4.5% | 1.5% | 0.1% | 0.4% | 2.4% | 10.7% | 100.0% |
| B. Population in Major Age Groups by Race and Ethnicity | | | | | | | | | | |
| 2000 | | | | | | | | | | |
| 0-19 | 10,391 | 100 | 76 | 745 | 264 | 19 | 16 | 446 | 1,284 | 12,596 |
| 20-64 | 26,447 | 1,018 | 258 | 1,260 | 546 | 61 | 27 | 626 | 2,855 | 31,838 |
| 65+ | 9,539 | 17 | 43 | 162 | 54 | 1 | 4 | 103 | 306 | 10,067 |
| 85+ | 941 | 1 | 0 | 6 | 2 | 0 | 1 | 3 | 19 | 967 |
| 2010 | | | | | | | | | | |
| 0-19 | 8,330 | 75 | 117 | 765 | 205 | 19 | 23 | 518 | 1,672 | 10,959 |
| 20-64 | 26,490 | 1,012 | 351 | 1,501 | 529 | 39 | 205 | 728 | 3,758 | 33,112 |
| 65+ | 10,505 | 27 | 62 | 212 | 96 | 4 | 2 | 110 | 488 | 11,294 |
| 85+ | 1,398 | 2 | 4 | 19 | 8 | 0 | 0 | 11 | 52 | 1,475 |
| C. Age Mix for Each Racial and Ethnic Group | | | | | | | | | | |
| 2000 | | | | | | | | | | |
| 0-19 | 22.4% | 8.8% | 20.2% | 34.4% | 30.6% | 23.5% | 34.0% | 38.0% | 28.9% | 23.1% |
| 20-64 | 57.0% | 89.7% | 68.4% | 58.1% | 63.2% | 75.3% | 57.4% | 53.3% | 64.2% | 58.4% |
| 65+ | 20.6% | 1.5% | 11.4% | 7.5% | 6.3% | 1.2% | 8.5% | 8.8% | 6.9% | 18.5% |
| 85+ | 2.0% | 0.1% | 0.0% | 0.3% | 0.2% | 0.0% | 2.1% | 0.3% | 0.4% | 1.8% |
| 2010 | | | | | | | | | | |
| 0-19 | 18.4% | 6.7% | 22.1% | 30.9% | 24.7% | 30.6% | 10.0% | 38.2% | 28.3% | 19.8% |
| 20-64 | 58.4% | 90.8% | 66.2% | 60.6% | 63.7% | 62.9% | 89.1% | 53.7% | 63.5% | 59.8% |
| 65+ | 23.2% | 2.4% | 11.7% | 8.6% | 11.6% | 6.5% | 0.9% | 8.1% | 8.2% | 20.4% |
| 85+ | 3.1% | 0.2% | 0.8% | 0.8% | 1.0% | 0.0% | 0.0% | 0.8% | 0.9% | 2.7% |
| D. Racial and Ethnic Mix for Each Age Group | | | | | | | | | | |
| 2000 | | | | | | | | | | |
| 0-19 | 82.5% | 0.8% | 0.6% | 5.9% | 2.1% | 0.2% | 0.1% | 3.5% | 10.2% | 100.0% |
| 20-64 | 83.1% | 3.2% | 0.8% | 4.0% | 1.7% | 0.2% | 0.1% | 2.0% | 9.0% | 100.0% |
| 65+ | 94.8% | 0.2% | 0.4% | 1.6% | 0.5% | 0.0% | 0.0% | 1.0% | 3.0% | 100.0% |
| 85+ | 97.3% | 0.1% | 0.0% | 0.6% | 0.2% | 0.0% | 0.1% | 0.3% | 2.0% | 100.0% |
| 2010 | | | | | | | | | | |
| 0-19 | 76.0% | 0.7% | 1.1% | 7.0% | 1.9% | 0.2% | 0.2% | 4.7% | 15.3% | 100.0% |
| 20-64 | 80.0% | 3.1% | 1.1% | 4.5% | 1.6% | 0.1% | 0.6% | 2.2% | 11.3% | 100.0% |
| 65+ | 93.0% | 0.2% | 0.5% | 1.9% | 0.9% | 0.0% | 0.0% | 1.0% | 4.3% | 100.0% |
| 85+ | 94.8% | 0.1% | 0.3% | 1.3% | 0.5% | 0.0% | 0.0% | 0.7% | 3.5% | 100.0% |
| E. Population Growth | | | | | | | | | | |
| 2000-10, Change | | | | | | | | | | |
| 0-19 | -2,061 | -25 | 41 | 20 | -59 | 0 | 7 | 72 | 388 | -1,637 |
| 20-64 | 43 | -6 | 93 | 241 | -17 | -22 | 178 | 102 | 903 | 1,274 |
| 65+ | 966 | 10 | 19 | 50 | 42 | 3 | -2 | 7 | 182 | 1,227 |
| 85+ | 457 | 1 | 4 | 13 | 6 | 0 | -1 | 8 | 33 | 508 |
| Total | -1,052 | -21 | 153 | 311 | -34 | -19 | 183 | 181 | 1,473 | 864 |
| 2000-10, % Change | | | | | | | | | | |
| 0-19 | -19.8% | -25.0% | 53.9% | 2.7% | -22.3% | 0.0% | 43.8% | 16.1% | 30.2% | -13.0% |
| 20-64 | 0.2% | -0.6% | 36.0% | 19.1% | -3.1% | -36.1% | 659.3% | 16.3% | 31.6% | 4.0% |
| 65+ | 10.1% | 58.8% | 44.2% | 30.9% | 77.8% | 300.0% | -50.0% | 6.8% | 59.5% | 12.2% |
| 85+ | 48.6% | 100.0% | N/A | 216.7% | 300.0% | N/A | -100.0% | 266.7% | 173.7% | 52.5% |
| Total | -2.3% | -1.9% | 40.6% | 14.4% | -3.9% | -23.5% | 389.4% | 15.4% | 33.1% | 1.6% |

Source: US Census 2010, 2000

| | White, Non- Hispanic | Black, Non- Hispanic | Asian, Non- Hispanic | Other, Non- Hispanic | Detail for Other, Non-Hispanic | | | | Hispanic or Latino | Total Population 2010 |
|--|----------------------------|---------------------------------|---------------------------------|----------------------------|--|---|--|--|-----------------------|-----------------------------|
| | | | | | American Indian & Alaska Native | Native Hawaiian & Pacific Islander | Some Other Race | Two or More Races | | |
| F. Population by Library-Defined Age Groups, 2010 | | | | | | | | | | |
| 0-5 | 2,134 | 14 | 28 | 191 | 51 | 5 | 1 | 134 | 485 | 2,852 |
| 6-10 | 1,893 | 21 | 30 | 167 | 43 | 4 | 1 | 119 | 413 | 2,524 |
| 11-13 | 1,323 | 10 | 22 | 131 | 33 | 4 | 10 | 84 | 263 | 1,749 |
| 14-18 | 2,513 | 21 | 30 | 231 | 67 | 5 | 10 | 149 | 426 | 3,221 |
| 19-32 | 6,134 | 386 | 92 | 469 | 128 | 12 | 92 | 237 | 1,519 | 8,600 |
| 33-45 | 5,779 | 354 | 120 | 418 | 148 | 10 | 68 | 192 | 1,139 | 7,810 |
| 46-64 | 15,044 | 281 | 146 | 659 | 264 | 18 | 46 | 331 | 1,185 | 17,315 |
| 65-84 | 9,107 | 25 | 58 | 193 | 88 | 4 | 2 | 99 | 436 | 9,819 |
| 85+ | 1,398 | 2 | 4 | 19 | 8 | 0 | 0 | 11 | 52 | 1,475 |
| Total | 45,325 | 1,114 | 530 | 2,478 | 830 | 62 | 230 | 1,356 | 5,918 | 55,365 |
| G. Population by 5-Year Age Brackets, 2010 | | | | | | | | | | |
| 0-4 | 1,748 | 11 | 20 | 159 | 43 | 5 | 1 | 110 | 390 | 2,328 |
| 5-9 | 1,873 | 18 | 31 | 162 | 38 | 4 | 1 | 119 | 417 | 2,501 |
| 10-14 | 2,229 | 17 | 36 | 211 | 59 | 6 | 11 | 135 | 427 | 2,920 |
| 15-19 | 2,480 | 29 | 30 | 233 | 65 | 4 | 10 | 154 | 438 | 3,210 |
| 20-24 | 2,124 | 135 | 30 | 164 | 59 | 4 | 27 | 74 | 498 | 2,951 |
| 25-29 | 2,247 | 157 | 32 | 154 | 32 | 3 | 45 | 74 | 595 | 3,185 |
| 30-34 | 2,003 | 136 | 35 | 169 | 43 | 9 | 29 | 88 | 549 | 2,892 |
| 35-39 | 2,052 | 119 | 45 | 147 | 52 | 2 | 22 | 71 | 417 | 2,780 |
| 40-44 | 2,424 | 159 | 47 | 175 | 63 | 3 | 31 | 78 | 433 | 3,238 |
| 45-49 | 3,200 | 133 | 43 | 156 | 64 | 2 | 19 | 71 | 380 | 3,912 |
| 50-54 | 4,018 | 90 | 46 | 189 | 76 | 6 | 16 | 91 | 342 | 4,685 |
| 55-59 | 4,308 | 53 | 41 | 177 | 70 | 5 | 12 | 90 | 308 | 4,887 |
| 60-64 | 4,114 | 30 | 32 | 170 | 70 | 5 | 4 | 91 | 236 | 4,582 |
| 65-69 | 3,226 | 9 | 19 | 87 | 40 | 3 | 1 | 43 | 146 | 3,487 |
| 70-74 | 2,483 | 8 | 14 | 59 | 30 | 1 | 0 | 28 | 136 | 2,700 |
| 75-79 | 1,905 | 6 | 15 | 30 | 15 | 0 | 0 | 15 | 99 | 2,055 |
| 80-84 | 1,493 | 2 | 10 | 17 | 3 | 0 | 1 | 13 | 55 | 1,577 |
| 85-89 | 918 | 2 | 3 | 15 | 5 | 0 | 0 | 10 | 39 | 977 |
| 90-94 | 370 | 0 | 1 | 4 | 3 | 0 | 0 | 1 | 9 | 384 |
| 95-99 | 97 | 0 | 0 | 0 | 0 | 0 | 0 | 0 | 3 | 100 |
| 100+ | 13 | 0 | 0 | 0 | 0 | 0 | 0 | 0 | 1 | 14 |
| Total | 45,325 | 1,114 | 530 | 2,478 | 830 | 62 | 230 | 1,356 | 5,918 | 55,365 |
| H. Median Age, 2000-10 | | | | | | | | | | |
| | White, Non- Hispanic | Black, Hispanic Inclusive | Asian, Hispanic Inclusive | | American Indian & Alaska Native, Hispanic Inclusive | Native Hawaiian & Pacific Islander, Hispanic Inclusive | Some Other Race, Hispanic Inclusive | Two or More Races, Hispanic Inclusive | Hispanic or Latino | Total Population |
| 2000 | 44.9 | 34.2 | 38.3 | | 35.0 | 34.8 | 29.7 | 27.1 | 30.1 | 42.9 |
| 2010 | 50.4 | 37.2 | 40.2 | | 40.5 | 34.0 | 34.2 | 26.8 | 31.7 | 47.3 |

Source: US Census 2010, 2000

Note: In the American Community Survey and for Census variables other than population, Hispanic origin is not broken out for all races.

| I. Income Distribution, 2005-09 | | | J. Median Household Income by Race and Ethnicity, 2005-09 (\$2009) | | | | | | | |
|---|------------|------------|---|-----------|--|----------|------------------------------|-------------|------------|-------|
| Range (ths) | Households | % of Total | White, NH | Black | Asian | Hispanic | Total | % of CA | California | |
| <\$10 | 1,028 | 4.6% | \$49,189 | \$54,167 | \$59,485 | \$42,905 | \$48,354 | 80.1% | \$60,392 | |
| \$10 to <\$25 | 4,329 | 19.6% | | | | | | | | |
| \$25 to <\$50 | 5,974 | 27.0% | | | | | | | | |
| \$50 to <\$75 | 4,120 | 18.6% | | | | | | | | |
| \$75 to <\$100 | 2,533 | 11.5% | | | | | | | | |
| \$100 to <\$150 | 2,566 | 11.6% | | | | | | | | |
| \$150+ | 1,567 | 7.1% | | | | | | | | |
| K. Household Type, 2000-10 | | | 2000 | 2000,% | 2010 | 2010,% | | | | |
| Total households | | | 20,989 | 100.0% | 22,156 | 100.0% | | | | |
| Family Households | | | 14,295 | 68.1% | 14,278 | 64.4% | | | | |
| Husband-wife w/children | | | 3,927 | 18.7% | 2,997 | 13.5% | | | | |
| Female head, no husband, w/children | | | 1,083 | 5.2% | 1,028 | 4.6% | | | | |
| Male head, no wife, w/children | | | 464 | 2.2% | 601 | 2.7% | | | | |
| Without children | | | 8,821 | 42.0% | 9,652 | 43.6% | | | | |
| Nonfamily households | | | 6,694 | 31.9% | 7,878 | 35.6% | | | | |
| Living alone | | | 5,453 | 26.0% | 6,263 | 28.3% | | | | |
| Other nonfamily | | | 1,241 | 5.9% | 1,615 | 7.3% | Source: US Census 2010, 2000 | | | |
| L. Household Type by Race and Ethnicity, 2010 | | | White, NH | Black | Asian | Hispanic | Total | | | |
| Total households | | | 19,757 | 67 | 199 | 1,374 | 22,156 | | | |
| Husband-wife family | | | 50.6% | 38.8% | 51.3% | 50.8% | 50.2% | | | |
| Family with male head, no wife | | | 4.8% | 11.9% | 4.5% | 6.8% | 5.0% | | | |
| Family with female head, no husband | | | 8.8% | 7.5% | 7.5% | 12.0% | 9.2% | | | |
| Living alone | | | 28.6% | 37.3% | 29.6% | 22.4% | 28.3% | Source: US | | |
| Other nonfamily | | | 7.1% | 4.5% | 7.0% | 8.0% | 7.3% | Census 2010 | | |
| M. Poverty, 2005-09 | | | Percentage of families and people whose income in the past 12 months is below the poverty level | | | | | | California | |
| All families | | | | | | | | | 7.2% | 9.8% |
| Families w/ related children under 18 years | | | | | | | | | 12.4% | 14.5% |
| Families w/ female householder, no husband present | | | | | | | | | 25.8% | 24.2% |
| Families w/ female householder, no husband present w/ related children under 18 years | | | | | | | | | 33.8% | 32.2% |
| All people | | | | | | | | | 10.4% | 13.2% |
| Under 18 years | | | | | | | | | 12.7% | 18.3% |
| 18 to 64 years | | | | | | | | | 11.3% | 11.9% |
| 65 years and over | | | | | | | | | 5.5% | 8.4% |
| N. Educational Attainment, 2005-09 | | | % at each level of educational attainment | | | | | | | |
| | | | White, NH | Black | Asian | Hispanic | Total | | | |
| Population 25 years and over | | | 34,808 | 1,056 | 410 | 3,493 | 41,153 | | | |
| Less than high school | | | 9.6% | 35.7% | 12.0% | 39.8% | 13.2% | | | |
| High school graduate (includes equivalency) | | | 29.4% | 29.7% | 19.8% | 30.5% | 29.4% | | | |
| Some college or associate's degree | | | 41.8% | 32.1% | 38.5% | 22.3% | 39.7% | | | |
| Bachelor's degree or higher | | | 19.3% | 2.5% | 29.8% | 7.4% | 17.7% | | | |
| O. Employment Status, 2010-11 | | | 2010 | June 2011 | | | | | | |
| In civilian labor force | | | 25,620 | 25,260 | | | | | | |
| Employed | | | 22,030 | 21,830 | | | | | | |
| Unemployed, % of labor force | | | 14.0% | 13.6% | Source: CA Employment Development Department | | | | | |
| P. Occupation, 2005-09 | | | Estimate | | Percent | | | | | |
| Civilian employed population, 16 yrs & over | | | 21,466 | | 100.0% | | | | | |
| Management, professional, and related occupations | | | 6,523 | | 30.4% | | | | | |
| Service occupations | | | 4,641 | | 21.6% | | | | | |
| Sales and office occupations | | | 5,573 | | 26.0% | | | | | |
| Farming, fishing, and forestry occupations | | | 166 | | 0.8% | | | | | |
| Construction, extraction, maintenance, and repair occupations | | | 2,472 | | 11.5% | | | | | |
| Production, transportation, and material moving occupations | | | 2,091 | | 9.7% | | | | | |
| Q. Class of Worker, 2005-09 | | | Estimate | | Percent | | | | | |
| Civilian employed population, 16 yrs & over | | | 21,466 | | 100.0% | | | | | |
| Private, for profit, wage and salary employee | | | 11,612 | | 54.1% | | | | | |
| Private, not for profit, wage and salary employee | | | 1,488 | | 6.9% | | | | | |
| Private, for profit, wage and salary self-employed in own business | | | 638 | | 3.0% | | | | | |
| Government workers | | | 4,581 | | 21.3% | | | | | |
| Self-employed in own not incorporated business | | | 3,061 | | 14.3% | | | | | |
| Unpaid family workers in family business | | | 86 | | 0.4% | | | | | |

Source: American Community Survey 2005-09, unless otherwise stated

ProfileTemplate 9-8-11.xlsr 9/9/2011 10:23

Note: In the American Community Survey and for US Census variables other than population, Hispanic origin is not broken out for all races. White, NH represents White, Non-Hispanic. Black and Asian are Hispanic inclusive.