

Highlights



Population Growth: The population of the Yolo County Library jurisdiction increased by 22% in the last decade and now stands at 145,000; this growth was more than twice the statewide rate of 10%. The greatest absolute increases occurred among the Hispanic and Asian populations, which grew by 10,000 and 8,000 people, respectively.

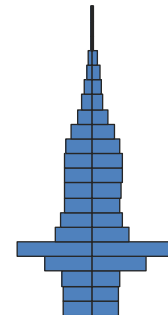
Diversity: The jurisdiction remains majority white, non-Hispanic, yet its racial and ethnic composition has changed since 2000. White, non-Hispanics now comprise 53% of the population, down from 60% in 2000; the Hispanic population increased from 21% to 24% of the total, and Asian population increased from 12% to 15% of the total.

Age Structure: The jurisdiction’s age structure closely resembles that of California as a whole, although the working-age population comprises a slightly larger percentage of the total: 63% of individuals are working age, compared with 61% statewide. The share of population age 65+ here is 9%, just below the 11% statewide share.

Education: Educational attainment in the Yolo County Library jurisdiction is significantly higher than in California as a whole. Forty-two percent of adults hold at least a Bachelor’s degree, compared with 30% statewide. Further, the share of adults without a high school diploma is 14%, compared to 20% across California.

Poverty: A higher share of individuals in the area has income below the federal poverty line here than statewide—20% compared with 13%. The share of working-age people living in poverty is particularly high, at 22%, and is nearly twice the rate for the same age group statewide.

Note: The Yolo County Library jurisdiction includes the county population that is not located within the city of Woodland.



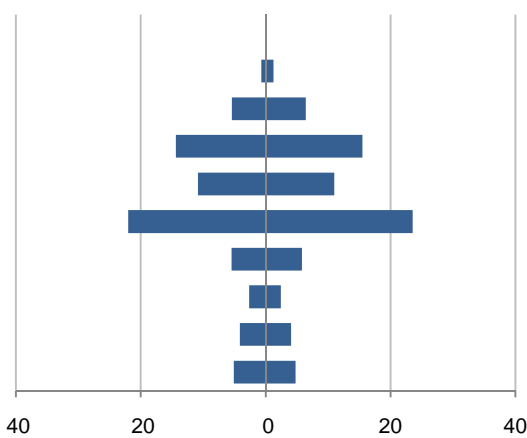
Population by Age

This demographic profile is part of a series of library jurisdiction profiles prepared for the California State Library by the Stanford Center on Longevity. The project, "Understanding California's Shifting Demographics," was supported in whole by the U.S. Institute of Museum and Library Services under the provisions of the Library Services and Technology Act, administered in California by the State Librarian. The opinions expressed herein do not necessarily reflect the position or policy of the U.S. Institute of Museum and Library Services or the California State Library, and no official endorsement by the U.S. Institute of Museum and Library Services or the California State Library should be inferred.

Key Indicators			
		2000	2010
Population Growth			
	Total population	119,509	145,381
	10-year growth	18.0%	21.6%
Diversity			
	% Hispanic	20.6%	23.8%
	% Asian, non-Hispanic	12.2%	15.3%
	% White, non-Hispanic	60.1%	52.9%
	% Black, non-Hispanic	2.2%	2.8%
Aging			
	% 65+	8.9%	9.5%
	Median age	#N/A	#N/A
Households			
	% Married couple with children	23.5%	21.0%
	% Living alone	24.1%	23.3%

1. Population by Library-Defined Age Group, 2010

In thousands; males on left, females on right

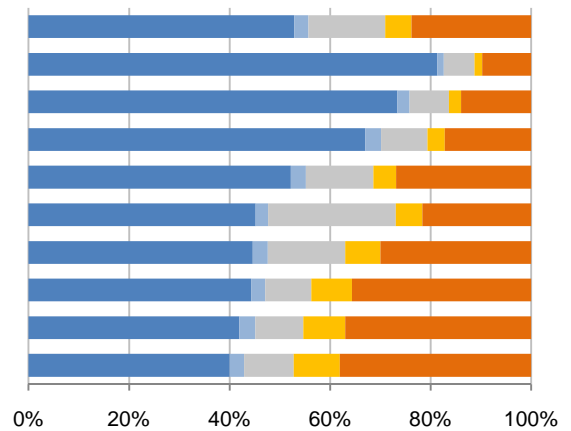


2. Race and Ethnicity by Library-Defined Age Group, 2010

White, NH Black, NH Asian, NH Other, NH Hispanic

Age group

Total
85+, Oldest
65 to 84, Older adults
46 to 64, Midlife
33 to 45, Adult
19 to 32, Young
14 to 18, Teens
11 to 13, Tweens
6 to 10, School age
0 to 5, Infants/toddlers

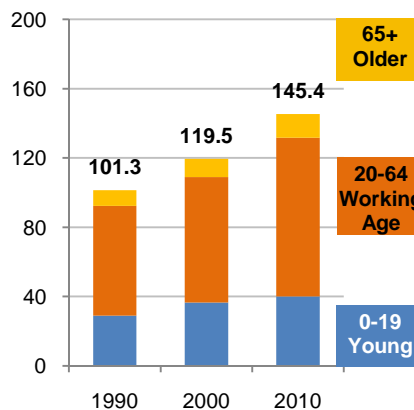


3. Population Growth by Library-Defined Age Group, 2000-10

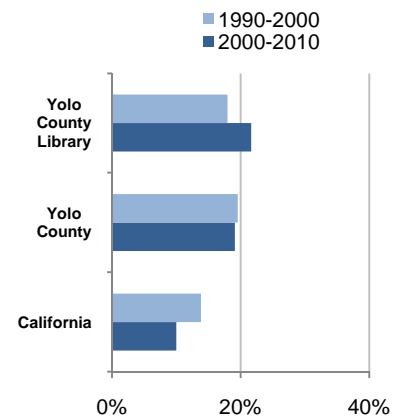
	2010	Change	% Change
Total	145,381	25,872	21.6%
85+	1,921	759	65.3%
65 to 84	11,826	2,372	25.1%
46 to 64	29,882	9,430	46.1%
33 to 45	21,806	903	4.3%
19 to 32	45,546	9,739	27.2%
14 to 18	11,267	1,193	11.8%
11 to 13	5,063	152	3.1%
6 to 10	8,200	17	0.2%
0 to 5	9,870	1,307	15.3%

4. Population Total, 1990-2010

In thousands



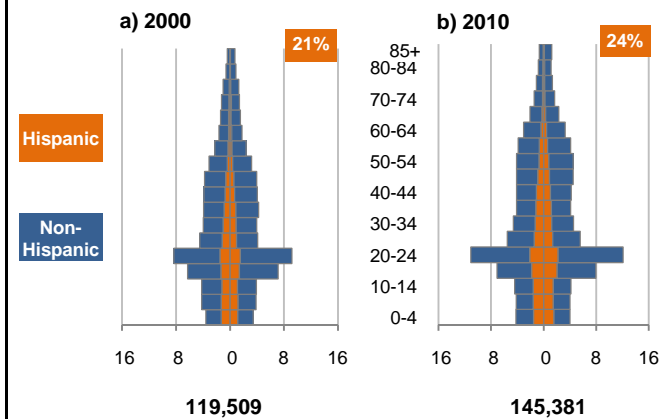
5. 10-Year Population Change



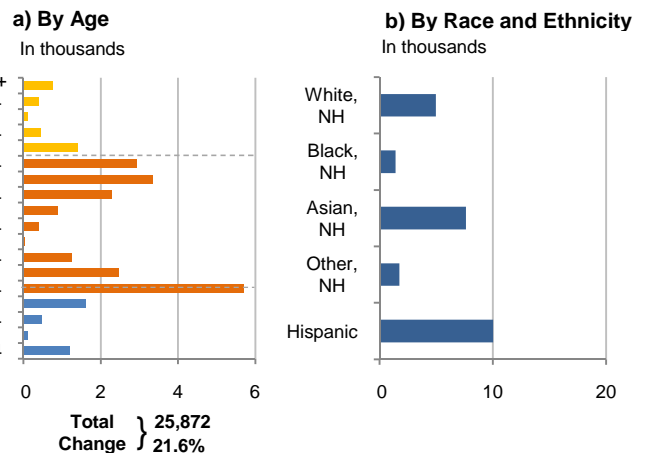
Source: US Census 2010, 2000, or 1990

6. Population by 5-Year Age Brackets

In thousands; males on left, females on right

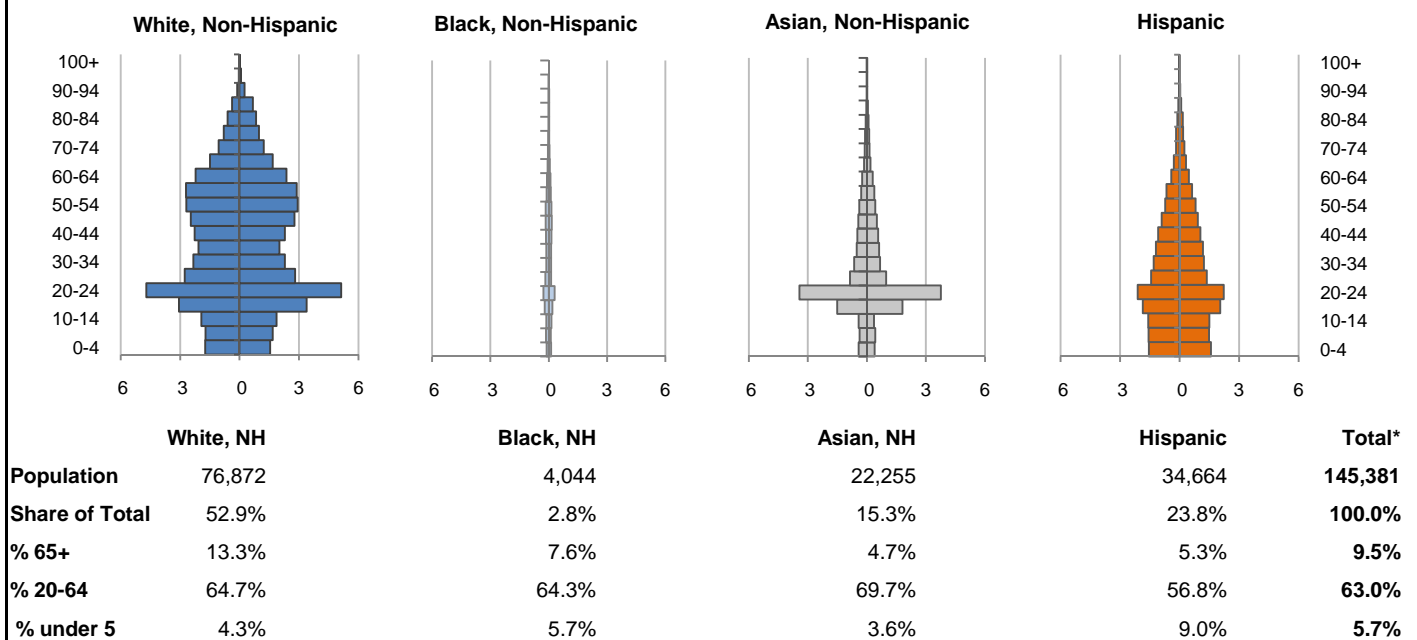


7. 10-Year Change in Population, 2000-10

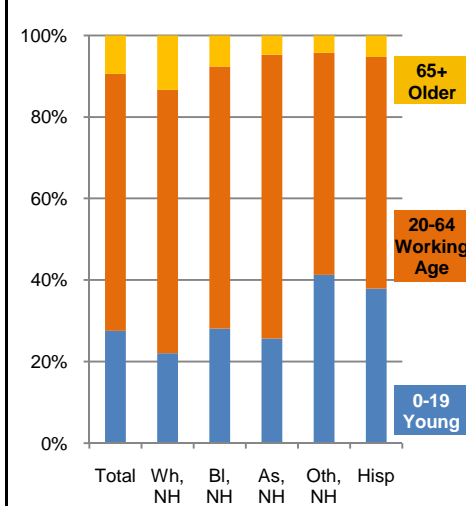


8. Population by Age, Race, and Ethnicity, 2010

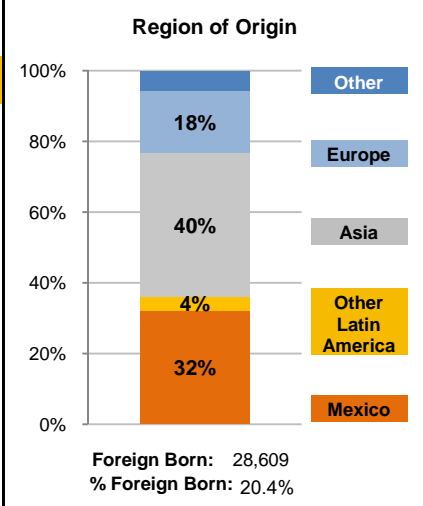
In thousands; males on left, females on right



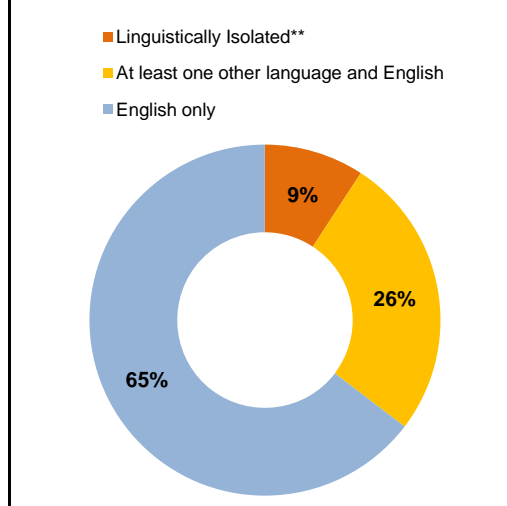
9. Age Mix by Race and Ethnicity, 2010



10. Foreign Born, 2005-09

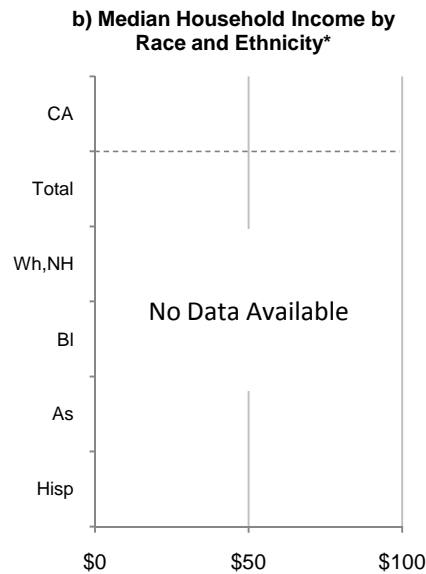
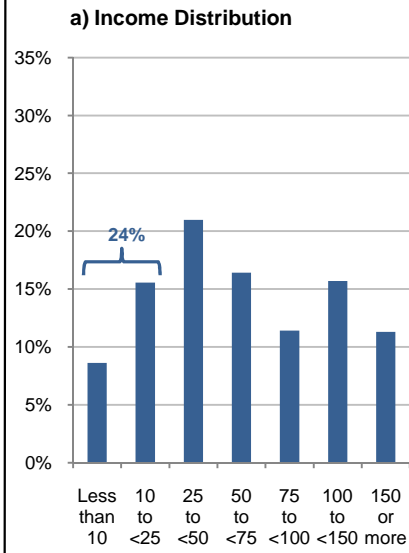


11. Household Language, 2005-09

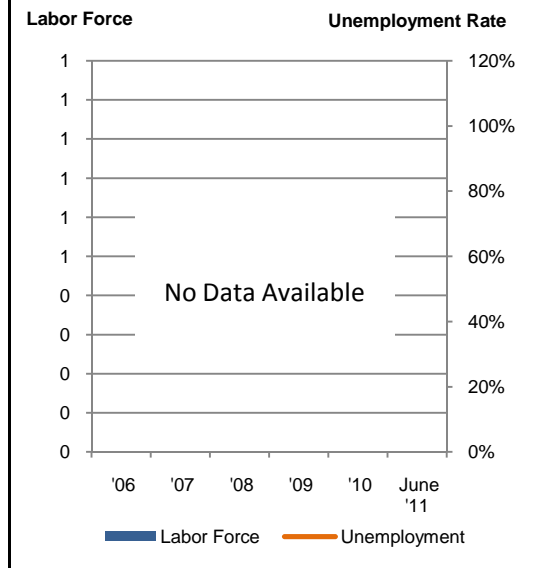


Wh=White; BI=Black; As=Asian; Oth=Other Race or Two or More Races; Hisp=Hispanic; NH=Non-Hispanic; ACS=American Community Survey 2005-09
*See pages 5-6 for detail on Other, Non-Hispanic
**Linguistically Isolated = No one in the household age 14 and over speaks English at least "very well"

12. Household Income, 2005-09
In thousands of \$ (2009)



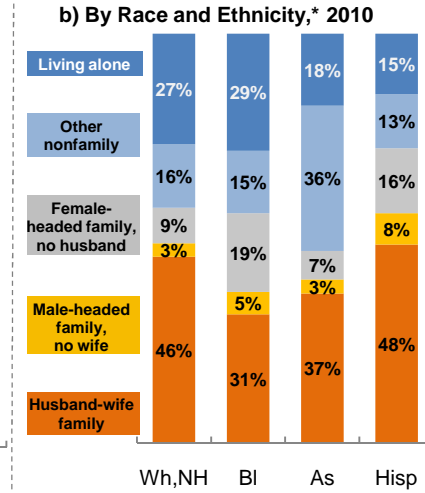
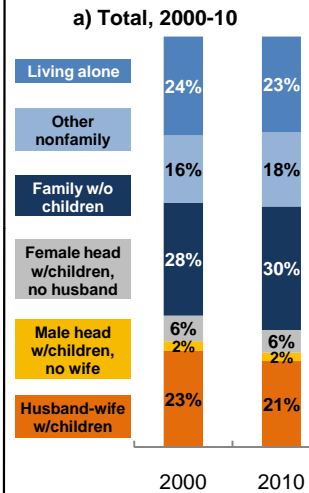
13. Labor Force and Unemployment, 2006-11



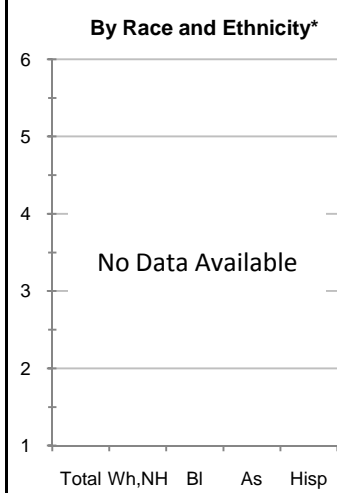
Source: ACS 2005-09

Source: CA Employment Development Department

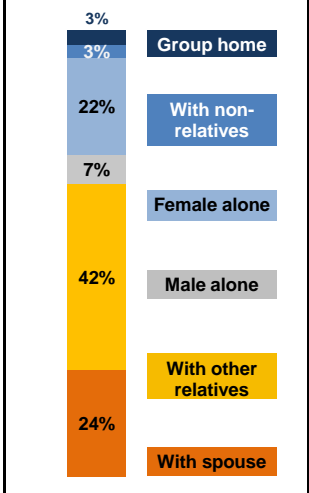
14. Household Type, 2010
% of all households



15. Average Household Size, 2010
By Race and Ethnicity*

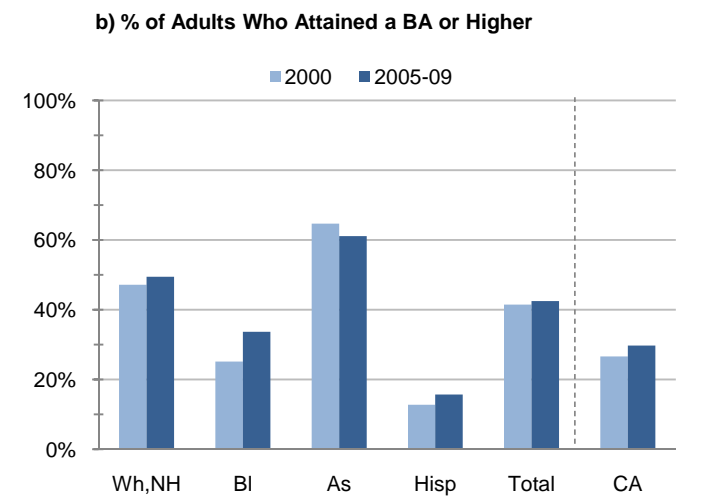
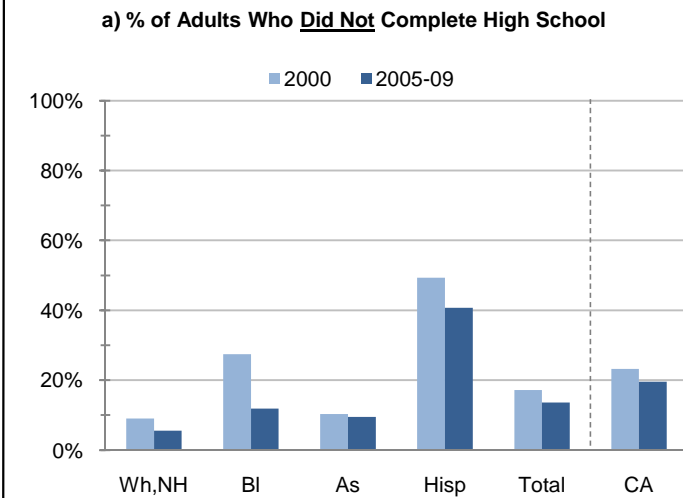


16. Living Arrangements Age 65+, 2005-09



Source: ACS 2005-09

17. Educational Attainment for the Population Age 25 and Over by Race and Ethnicity*



Source: Census 2000, ACS 2005-09

*Wh,NH=White,Non-Hispanic; BI=Black,Hispanic Inclusive; As=Asian,Hispanic Inclusive; Hisp=Hispanic(Includes all races); CA=California Total

Note: In the American Community Survey and for Census variables other than population, Hispanic origin is not broken out for all races.

	White, Non- Hispanic	Black, Non- Hispanic	Asian, Non- Hispanic	Other, Non- Hispanic	Detail for Other, Non-Hispanic				Hispanic or Latino	Total Population
					American Indian & Alaska Native	Native Hawaiian & Pacific Islander	Some Other Race	Two or More Races		
A. Total Population										
2000 Total	71,878	2,606	14,622	5,780	800	326	326	4,328	24,623	119,509
2000 % of Total	60.1%	2.2%	12.2%	4.8%	0.7%	0.3%	0.3%	3.6%	20.6%	100.0%
2010 Total	76,872	4,044	22,255	7,546	766	676	381	5,723	34,664	145,381
2010 % of Total	52.9%	2.8%	15.3%	5.2%	0.5%	0.5%	0.3%	3.9%	23.8%	100.0%
B. Population in Major Age Groups by Race and Ethnicity										
2000										
0-19	18,829	863	4,440	2,417	230	109	123	1,955	10,053	36,602
20-64	44,600	1,560	9,623	3,103	521	207	192	2,183	13,405	72,291
65+	8,449	183	559	260	49	10	11	190	1,165	10,616
85+	974	20	57	29	4	1	0	24	82	1,162
2010										
0-19	16,916	1,135	5,700	3,113	181	183	128	2,621	13,139	40,003
20-64	49,717	2,600	15,511	4,115	516	458	242	2,899	19,688	91,631
65+	10,239	309	1,044	318	69	35	11	203	1,837	13,747
85+	1,563	24	117	30	3	4	1	22	187	1,921
C. Age Mix for Each Racial and Ethnic Group										
2000										
0-19	26.2%	33.1%	30.4%	41.8%	28.8%	33.4%	37.7%	45.2%	40.8%	30.6%
20-64	62.0%	59.9%	65.8%	53.7%	65.1%	63.5%	58.9%	50.4%	54.4%	60.5%
65+	11.8%	7.0%	3.8%	4.5%	6.1%	3.1%	3.4%	4.4%	4.7%	8.9%
85+	1.4%	0.8%	0.4%	0.5%	0.5%	0.3%	0.0%	0.6%	0.3%	1.0%
2010										
0-19	22.0%	28.1%	25.6%	41.3%	23.6%	27.1%	33.6%	45.8%	37.9%	27.5%
20-64	64.7%	64.3%	69.7%	54.5%	67.4%	67.8%	63.5%	50.7%	56.8%	63.0%
65+	13.3%	7.6%	4.7%	4.2%	9.0%	5.2%	2.9%	3.5%	5.3%	9.5%
85+	2.0%	0.6%	0.5%	0.4%	0.4%	0.6%	0.3%	0.4%	0.5%	1.3%
D. Racial and Ethnic Mix for Each Age Group										
2000										
0-19	51.4%	2.4%	12.1%	6.6%	0.6%	0.3%	0.3%	5.3%	27.5%	100.0%
20-64	61.7%	2.2%	13.3%	4.3%	0.7%	0.3%	0.3%	3.0%	18.5%	100.0%
65+	79.6%	1.7%	5.3%	2.4%	0.5%	0.1%	0.1%	1.8%	11.0%	100.0%
85+	83.8%	1.7%	4.9%	2.5%	0.3%	0.1%	0.0%	2.1%	7.1%	100.0%
2010										
0-19	42.3%	2.8%	14.2%	7.8%	0.5%	0.5%	0.3%	6.6%	32.8%	100.0%
20-64	54.3%	2.8%	16.9%	4.5%	0.6%	0.5%	0.3%	3.2%	21.5%	100.0%
65+	74.5%	2.2%	7.6%	2.3%	0.5%	0.3%	0.1%	1.5%	13.4%	100.0%
85+	81.4%	1.2%	6.1%	1.6%	0.2%	0.2%	0.1%	1.1%	9.7%	100.0%
E. Population Growth										
2000-10, Change										
0-19	-1,913	272	1,260	696	-49	74	5	666	3,086	3,401
20-64	5,117	1,040	5,888	1,012	-5	251	50	716	6,283	19,340
65+	1,790	126	485	58	20	25	0	13	672	3,131
85+	589	4	60	1	-1	3	1	-2	105	759
Total	4,994	1,438	7,633	1,766	-34	350	55	1,395	10,041	25,872
2000-10, % Change										
0-19	-10.2%	31.5%	28.4%	28.8%	-21.3%	67.9%	4.1%	34.1%	30.7%	9.3%
20-64	11.5%	66.7%	61.2%	32.6%	-1.0%	121.3%	26.0%	32.8%	46.9%	26.8%
65+	21.2%	68.9%	86.8%	22.3%	40.8%	250.0%	0.0%	6.8%	57.7%	29.5%
85+	60.5%	20.0%	105.3%	3.4%	-25.0%	300.0%	N/A	-8.3%	128.0%	65.3%
Total	6.9%	55.2%	52.2%	30.6%	-4.3%	107.4%	16.9%	32.2%	40.8%	21.6%

Source: US Census 2010, 2000

	White, Non- Hispanic	Black, Non- Hispanic	Asian, Non- Hispanic	Other, Non- Hispanic	Detail for Other, Non-Hispanic				Hispanic or Latino	Total Population 2010
					American Indian & Alaska Native	Native Hawaiian & Pacific Islander	Some Other Race	Two or More Races		
F. Population by Library-Defined Age Groups, 2010										
0-5	3,947	283	979	903	46	57	41	759	3,758	9,870
6-10	3,440	258	785	685	43	42	35	565	3,032	8,200
11-13	2,241	142	466	409	29	13	20	347	1,805	5,063
14-18	5,024	339	1,733	789	48	49	21	671	3,382	11,267
19-32	20,568	1,132	11,563	2,431	182	210	135	1,904	9,852	45,546
33-45	11,382	650	2,933	977	127	121	52	677	5,864	21,806
46-64	20,031	931	2,752	1,034	222	149	66	597	5,134	29,882
65-84	8,676	285	927	288	66	31	10	181	1,650	11,826
85+	1,563	24	117	30	3	4	1	22	187	1,921
Total	76,872	4,044	22,255	7,546	766	676	381	5,723	34,664	145,381
G. Population by 5-Year Age Brackets, 2010										
0-4	3,283	231	808	768	43	47	34	644	3,127	8,217
5-9	3,389	250	796	692	42	47	35	568	3,041	8,168
10-14	3,784	262	774	680	42	27	32	579	3,073	8,573
15-19	6,460	392	3,322	973	54	62	27	830	3,898	15,045
20-24	9,834	577	7,199	1,245	70	93	63	1,019	4,343	23,198
25-29	5,580	284	1,838	584	64	60	40	420	2,800	11,086
30-34	4,617	244	1,309	447	51	51	34	311	2,535	9,152
35-39	4,086	238	1,154	392	51	51	18	272	2,363	8,233
40-44	4,557	269	1,050	353	51	45	15	242	2,127	8,356
45-49	5,248	305	937	342	55	59	21	207	1,825	8,657
50-54	5,628	309	823	321	67	48	25	181	1,533	8,614
55-59	5,589	198	669	242	62	29	12	139	1,281	7,979
60-64	4,578	176	532	189	45	22	14	108	881	6,356
65-69	3,181	119	336	120	29	14	5	72	614	4,370
70-74	2,276	86	248	87	17	7	3	60	420	3,117
75-79	1,779	46	200	52	14	7	2	29	353	2,430
80-84	1,440	34	143	29	6	3	0	20	263	1,909
85-89	1,059	16	79	19	2	3	1	13	143	1,316
90-94	382	7	29	7	0	0	0	7	35	460
95-99	112	1	7	3	0	1	0	2	8	131
100+	10	0	2	1	1	0	0	0	1	14
Total	76,872	4,044	22,255	7,546	766	676	381	5,723	34,664	145,381
H. Median Age, 2000-10										
	White, Non- Hispanic	Black, Hispanic Inclusive	Asian, Hispanic Inclusive		American Indian & Alaska Native, Hispanic Inclusive	Native Hawaiian & Pacific Islander, Hispanic Inclusive	Some Other Race, Hispanic Inclusive	Two or More Races, Hispanic Inclusive	Hispanic or Latino	Total Population
2000	#N/A	#N/A	#N/A		#N/A	#N/A	#N/A	#N/A	#N/A	#N/A
2010	#N/A	#N/A	#N/A		#N/A	#N/A	#N/A	#N/A	#N/A	#N/A

Source: US Census 2010, 2000

Note: In the American Community Survey and for Census variables other than population, Hispanic origin is not broken out for all races.

I. Income Distribution, 2005-09			J. Median Household Income by Race and Ethnicity, 2005-09 (\$2009)						
Range (ths)	Households	% of Total	White, NH	Black	Asian	Hispanic	Total	% of CA	California
<\$10	4,234	8.6%	#N/A	#N/A	#N/A	#N/A	#N/A	#N/A	\$60,392
\$10 to <\$25	7,636	15.6%							
\$25 to <\$50	10,291	21.0%							
\$50 to <\$75	8,050	16.4%							
\$75 to <\$100	5,604	11.4%							
\$100 to <\$150	7,697	15.7%							
\$150+	5,544	11.3%							
K. Household Type, 2000-10			2000	2000,%	2010	2010,%			
Total households			42,632	100.0%	52,151	100.0%			
Family Households			25,379	59.5%	30,553	58.6%			
Husband-wife w/children			10,017	23.5%	10,944	21.0%			
Female head, no husband, w/children			2,671	6.3%	2,897	5.6%			
Male head, no wife, w/children			963	2.3%	1,024	2.0%			
Without children			11,728	27.5%	15,688	30.1%			
Nonfamily households			17,253	40.5%	21,598	41.4%			
Living alone			10,280	24.1%	12,154	23.3%			
Other nonfamily			6,973	16.4%	9,444	18.1%	Source: US Census 2010, 2000		
L. Household Type by Race and Ethnicity, 2010			White, NH	Black	Asian	Hispanic	Total		
Total households			32,118	1,618	7,010	9,453	52,151		
Husband-wife family			45.5%	31.5%	36.5%	48.5%	44.1%		
Family with male head, no wife			3.3%	5.4%	3.4%	7.7%	4.2%		
Family with female head, no husband			8.7%	19.3%	7.0%	15.9%	10.2%		
Living alone			26.9%	28.6%	17.5%	14.7%	23.3%	Source: US	
Other nonfamily			15.6%	15.2%	35.5%	13.3%	18.1%	Census 2010	
M. Poverty, 2005-09									
Percentage of families and people whose income in the past 12 months is below the poverty level								California	
All families						9.1%	9.8%		
Families w/ related children under 18 years						12.9%	14.5%		
Families w/ female householder, no husband present						22.8%	24.2%		
Families w/ female householder, no husband present w/ related children under 18 years						28.4%	32.2%		
All people						19.8%	13.2%		
Under 18 years						17.3%	18.3%		
18 to 64 years						22.6%	11.9%		
65 years and over						5.2%	8.4%		
N. Educational Attainment, 2005-09									
			% at each level of educational attainment						
			White, NH	Black	Asian	Hispanic	Total		
Population 25 years and over			45,842	1,815	7,987	15,461	73,737		
Less than high school			5.5%	11.8%	9.5%	40.7%	13.6%		
High school graduate (includes equivalency)			18.4%	21.7%	10.9%	22.4%	19.0%		
Some college or associate's degree			26.6%	32.8%	18.4%	21.1%	24.9%		
Bachelor's degree or higher			49.5%	33.7%	61.1%	15.7%	42.5%		
O. Employment Status, 2010-11									
			2010	June 2011					
In civilian labor force			#N/A	#N/A					
Employed			#N/A	#N/A					
Unemployed, % of labor force			#N/A	#N/A	Source: CA Employment Development Department				
P. Occupation, 2005-09									
				Estimate	Percent				
Civilian employed population, 16 yrs & over				64,409	100.0%				
Management, professional, and related occupations				28,931	44.9%				
Service occupations				10,465	16.2%				
Sales and office occupations				14,237	22.1%				
Farming, fishing, and forestry occupations				1,205	1.9%				
Construction, extraction, maintenance, and repair occupations				4,223	6.6%				
Production, transportation, and material moving occupations				5,348	8.3%				
Q. Class of Worker, 2005-09									
				Estimate	Percent				
Civilian employed population, 16 yrs & over				64,409	100.0%				
Private, for profit, wage and salary employee				32,788	50.9%				
Private, not for profit, wage and salary employee				4,812	7.5%				
Private, for profit, wage and salary self-employed in own business				1,172	1.8%				
Government workers				20,623	32.0%				
Self-employed in own not incorporated business				4,935	7.7%				
Unpaid family workers in family business				79	0.1%				

Source: American Community Survey 2005-09, unless otherwise stated

ProfileTemplate 9-8-11.xlsr 9/11/2011 10:03

Note: In the American Community Survey and for US Census variables other than population, Hispanic origin is not broken out for all races. White, NH represents White, Non-Hispanic. Black and Asian are Hispanic inclusive.